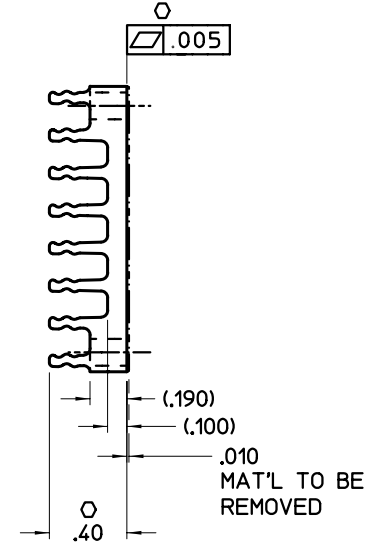
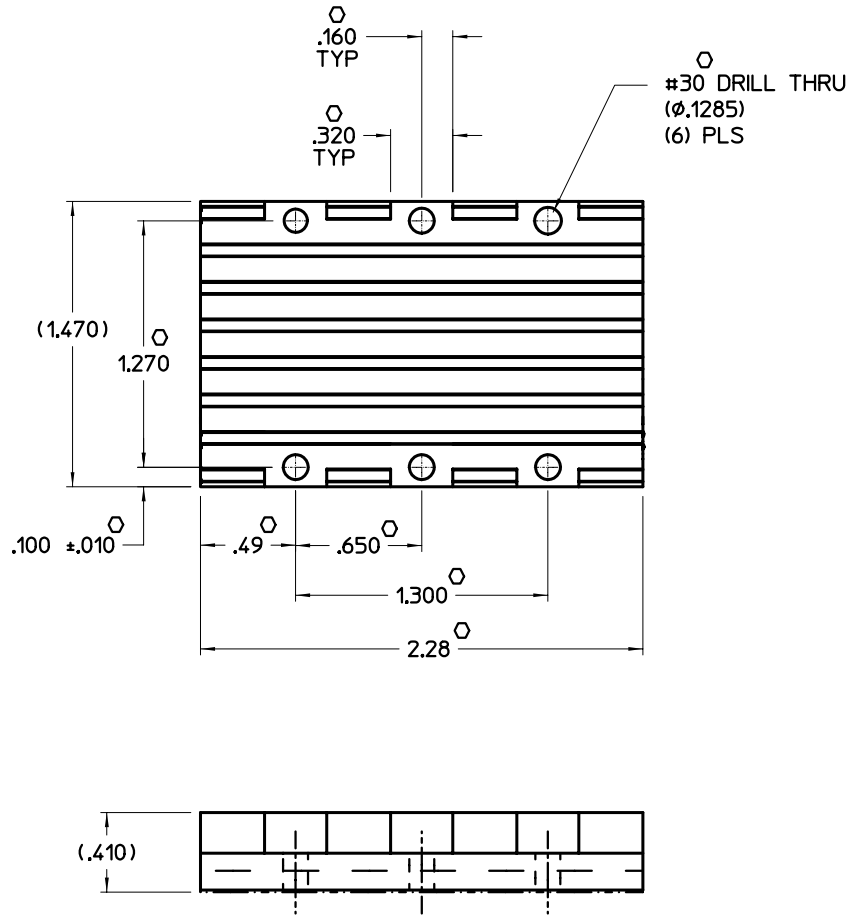


VICOR CONFIDENTIAL  
 THIS DOCUMENT AND THE DATA DISCLOSED  
 HEREIN OR HEREWITH IS NOT TO BE REPRODUCED,  
 USED, OR DISCLOSED IN WHOLE OR IN PART  
 TO ANYONE WITHOUT PERMISSION OF VICOR CORP.

| REV. | DESCRIPTION                        | DATE         | APPROVED |
|------|------------------------------------|--------------|----------|
| #1   | RELEASED FOR DEVELOPMENT           | DPK 11/17/97 | SWN      |
| #2   | ADDED +.010 TOL TO DIM             | DPK 12/8/97  | SWN      |
| #3   | .49 WAS .490: REMOVED P/N STAMPING | DPK 8/24/98  | SWN      |
| #4   | 2.28 WAS 2.280                     | DPK 9/2/98   | SWN      |
| #5   | ADDED .40 AND 'O' TO .100 & .190   | DPK 9/11/98  | SWN      |
| #6   | ADDED NOTE 4, CRITICAL CHA. 'O'    | AK 10/6/99   | SWN      |



- NOTES
1. MAKE FROM VICOR EXTRUSION 16287.
  2. REMOVE ALL BURRS AND SHARP EDGES.
  3. FINISH: CLEAR CHROMATE.
  4. 'O' DENOTES CRITICAL CHARACTERISTICS FOR LOT INSPECTION.

|                                                                                                                                                                                                                |                        |                                                              |                   |
|----------------------------------------------------------------------------------------------------------------------------------------------------------------------------------------------------------------|------------------------|--------------------------------------------------------------|-------------------|
| DRAWN BY<br><b>D.P. KELLY</b>                                                                                                                                                                                  | DATE<br><b>11/97</b>   |                                                              |                   |
| <small>UNLESS OTHERWISE SPECIFIED<br/>         DIMENSIONS ARE IN INCHES.<br/>         TOLERANCES ARE:<br/>         FRACTIONS DECIMALS ANGLES<br/>         1/64 .001 .01°<br/>         .0005 .0005 .01°</small> |                        | <b>HTSNK, "C" LONG. .4H<br/>         LOW FLOW, THRU HOLE</b> |                   |
| THIRD ANGLE PROJECTION<br>                                                                                                                                                                                     | SIZE<br><b>C 67131</b> | DWG NO<br><b>18030</b>                                       | REV<br><b># 6</b> |
| DO NOT SCALE DRAWING                                                                                                                                                                                           | SCALE<br><b>2-1</b>    | SHEET<br><b>1</b>                                            | OF<br><b>1</b>    |