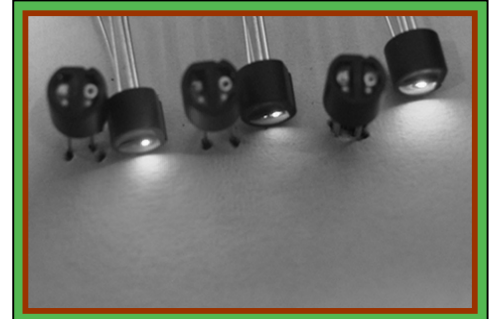


**Reflective Photo Interrupter Perception Color**  
(KIR-1001A, 1002A, 1003A)

**Description**

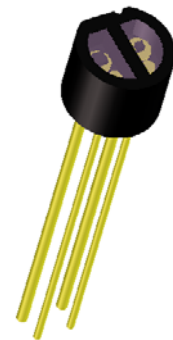
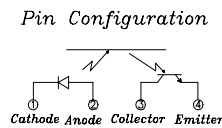
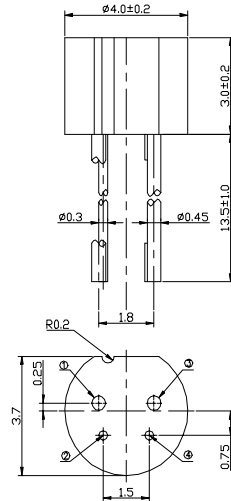
- It is applied mini opto sensor to Printers or Copiers.  
: Size :  $\Phi 4.0\text{mm} \times 3.0\text{mm}$
- It is high-performance standard type.  
: Combines a high-output Visible LED with a high sensitivity phototransistor.
- High reliability, Low power dissipation and Long life span.
- It is designed for use in general electric equipments such as OA, Household appliances, Industrial sensor, etc.



**Features**

- compact( $\Phi 4.0\text{mm}$ )
- Easy to mount on P.C.B.
- High performance
- High speed response
- Widely applicable

**Outline Dimensions**



**Application**

- Color Detector Sensor
- Printers
- Copiers

**Characteristics**

[Ta = 25 ]

Parameter	Symbol	1001A	1002A	1003A	Unit	Condition	
Input	Forward voltage	VF	2.0	2.1	3.7	V	IF = 20mA
	Reverse Current	IR	Max. 10	←	←	$\mu\text{A}$	VR = 5V
	Capacitance	CT	25	←	←	pF	f = 1kHz
	Peak wavelength	P	639	572	474	nm	-
Output	Collector Dark Current	ICEO	Max. 100	←	←	nA	VCE = 10V 0 Lux
Transmission	Leakage Current	ICEOD	Max. 10	←	←	$\mu\text{A}$	VCE = 5V, IF=20mA (Shading)
	Collector-Emitter Saturation Voltage	VCE(Sat)	Max. 0.4	←	←	V	IF=20mA, IC=0.1mA
Response Time	Rise Time	tr	50	←	←	$\mu\text{s}$	Vcc=5V, IC= 0.1 mA RL = 1k $\Omega$