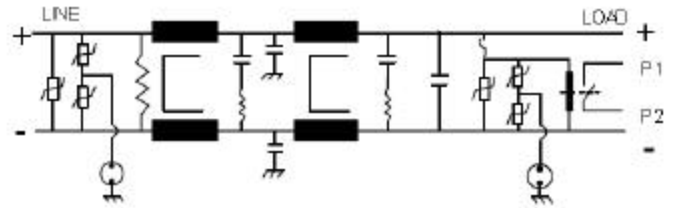




# KK-1222-25

This filter is intended to provide transient and surge suppression for DC power systems. In addition to transient and surge suppression the filter also provides very good common mode and differential mode insertion loss. If the transient suppression network is destroyed the filter has a switch which will provide a contact closure for alerting a surveillance system.



Operating voltage = 18 - 36 VDC  
 Operating current (max) = 25 amperes  
 Temperature range (storage) = -55 to 85 c  
 Temperature range (operating)  
 25 A = -40 to 55 c  
 23 A = " 60 c  
 21 A = " 64 c  
 19 A = " 68 c  
 17 A = " 73 c  
 Transient Clamping voltage = 42 - 52 V  
 Surge clamping voltage = 75 - 110 V  
 Discharge current (8/20 us) = 20,000 amp  
 Approvals: CSA class I, div 2 for hazardous  
 Locations (Pending)

