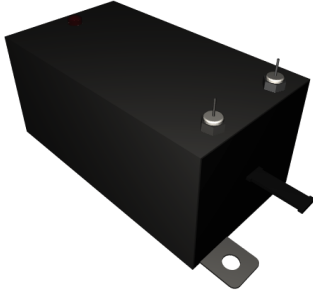


85W 100Amp Series



PRODUCT DESCRIPTIONS

The 85W Series attains high carry current of 100A (pulse) at single contact. This series controls stable operation under super high-load conditions to satisfy a broad range of industry requirements, such as IG-BT test, FET test and DC switching for solar system.

SPECIFICATIONS

| 85W 100Amp Series | | 85W-1A□0E0 | | High Power / Current |
|--------------------------------------|------------------------|------------------------------|------|--|
| Parameters | Units | 1 Form A | | Test Conditions |
| Coil Specifications | | | | |
| Nominal Coil Voltage | VDC | 12.0 | 24.0 | |
| Coil Resistance | Ω | 35 | 135 | ±10% @ 20°C |
| Operate Voltage | VDC Max | 10.2 | 20.4 | 15°C to 35°C |
| Release Voltage | VDC Min | 1.2 | 2.4 | 15°C to 35°C |
| Contact Ratings | | | | |
| Switching Voltage | Volts | 240 | | Max DC/Peak AC resistance |
| Switching Current | Amps | 50 | | Max DC/Peak AC resistance |
| Carry Current | Amps | 50 | | Max DC/Peak AC resistance |
| Carry Current (Pulse) | Amps | 100 | | Max DC/Peak AC resistance |
| Contact Rating | Watts | 3600 | | Max DC/Peak AC Resist |
| Life Expectancy | x10 ⁶ Cycle | 1000 | | @ 1V 10mh |
| Contact Resistance | mΩ | 20 | | Max initial @ operate voltage |
| Contact Resistance Stability | mΩ | 2.0 | | Max initial @ operate voltage |
| Relay Specifications | | | | |
| Insulation Resistance | Ω Min | 10 ¹⁰ | | Between all isolated pins @ 100V 20°C 40%RH |
| Dielectric Strength | VDC Min | 2500 | | Between contacts |
| | VDC Min | 2500 | | Contacts to coil |
| Operate Time (No Bounce) | msec Max | 80.0 | | @ nominal coil voltage |
| Release Time | msec Max | 80.0 | | 1Hz square wave Diode suppression |
| Environmental Ratings | | | | |
| Measurement Reference Conditions | | Storage temp: -20°C to +80°C | | |
| Temp: 15°C to 35°C | | Operate temp: -10°C to +60°C | | |
| Humidity: 25% to 75%RH | | Vibration: 20G's to 2000Hz | | |
| Atmospheric Pressure: 860 to 1060hpa | | Shock: 50G's | | |

Ordering Code:

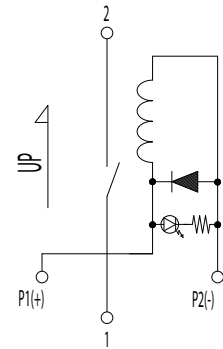
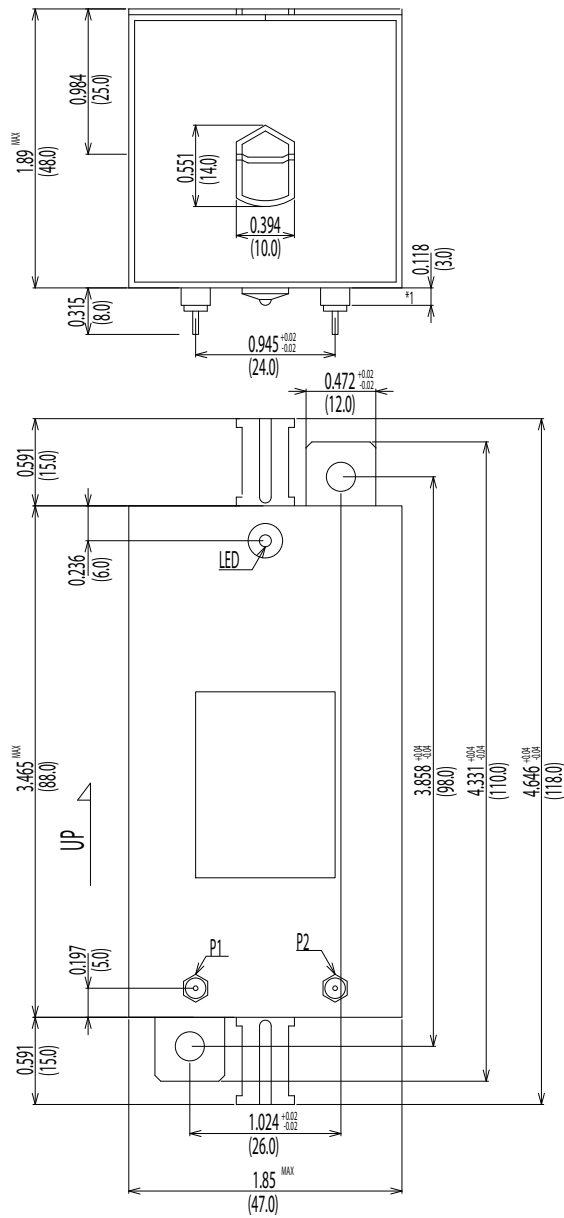
85W-1A□0E0

□=2 (12.0VDC), 3 (24.0VDC)

Dimensions All Dimensions are inches (mm)

Schematic <Top View>

85W-1A□0E0



Mercury Relay

Note: Hg wet contacts must be mounted within 30° of vertical plane.