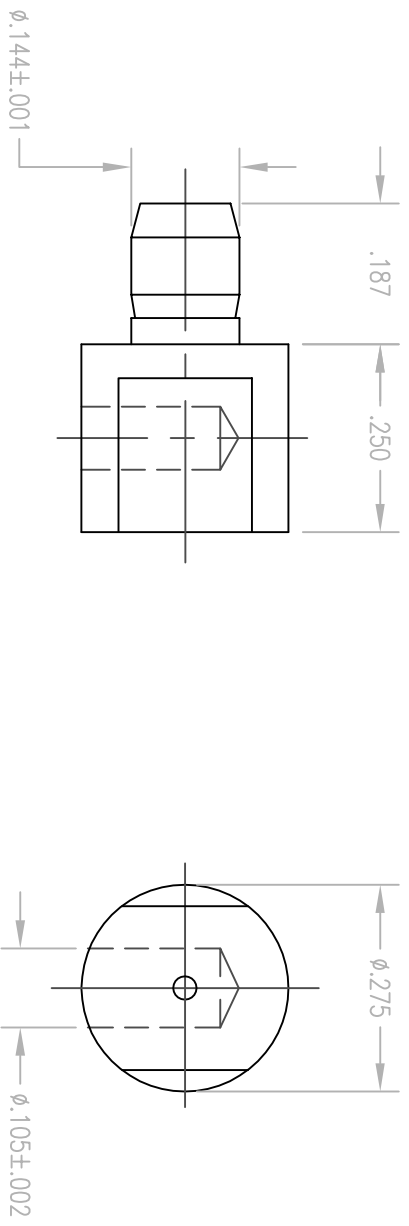


REV.	DESCRIPTION	DATE	BY	APPD.
1	NPR 2301	2/29/01	MJF	



- NOTES:
1. MATERIAL:
BODY: BRASS PER ASTM B16
 2. FINISH:
BODY: .000030 MIN GOLD PER MIL-G-45204 OVER
.000050 MIN NICKEL PER QQ-N-290
 3. FOR USE WITH 14 AWG WIRE.

PER ASME Y14.5M-1994 UNLESS OTHERWISE SPECIFIED: TOLERANCES ARE IN INCHES (MM)		PER ASME Y14.5M-1994 UNLESS OTHERWISE SPECIFIED: TOLERANCES ARE IN INCHES (MM)		PER ASME Y14.5M-1994 UNLESS OTHERWISE SPECIFIED: TOLERANCES ARE IN INCHES (MM)	
DIMENSIONS: .XX ± .01/0.254 .XXX ± .005/0.127 ANGLES: 3° Z'		DIMENSIONS: .XX ± .01/0.254 .XXX ± .005/0.127 ANGLES: 3° Z'		DIMENSIONS: .XX ± .01/0.254 .XXX ± .005/0.127 ANGLES: 3° Z'	
SCALE: 4:1		SCALE: 4:1		SCALE: 4:1	
CUSTOMER DRAWING		CUSTOMER DRAWING		CUSTOMER DRAWING	
DRAWN: MJF APPROVED:		CHECKED:		DATE:	
DATE: 2/29/01		DATE:		DATE:	
TITLE: TERMINATION 10/20 AMP		TITLE: TERMINATION 10/20 AMP		TITLE: TERMINATION 10/20 AMP	
A		A		A	
01312		01312		01312	
SHT. 1		OF 1		REV. 1	

Liton
 Winchester/Reticon
 400 Park Road
 Westford, Connecticut 06096