

PRODUCT NUMBER
5 5 1 0 2 - X X X - X X - X X X X

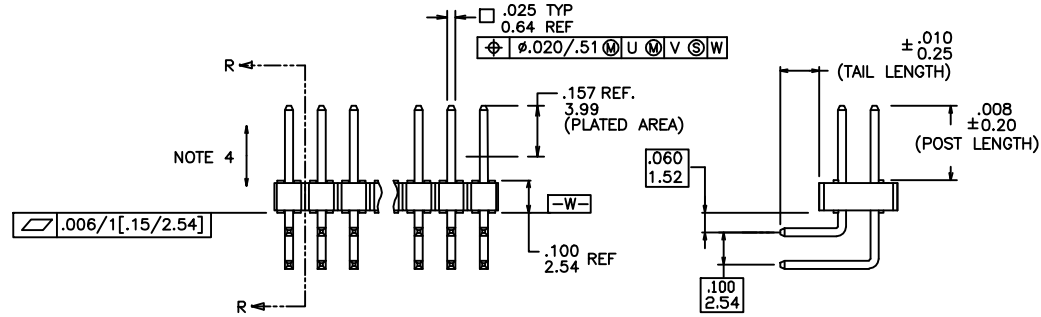
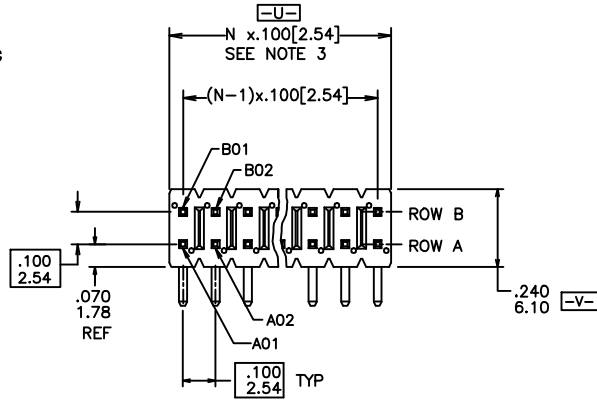
PLATING
S=15µm[0.38µm]GOLD ON CONTACT AREA
100µm[2.54µm]TIN ON TAIL (NOTE 14)
G=30µm[0.76µm]GOLD ON CONTACT AREA
100µm[2.54µm]TIN ON TAIL (NOTE 14)
T=100µm[2.54µm]TIN ON CONTACT AREA AND ON TAIL (SEE NOTE 9 & 13)
F=2µm[0.05µm]GOLD ON CONTACT AREA AND ON TAIL

PIN STYLE	POST	TAIL
11	0.230/5.84	0.090/2.29
17	0.230/5.84	0.120/3.05
12	0.230/5.84	0.190/4.83
34	0.318/8.08	0.100/2.54
35	0.318/8.08	0.120/3.05
36	0.318/8.08	0.200/5.08

POSITIONS PER ROW
01 TO 36

RETENTION
R= RETENTIVE LEG
NOTE 6

POLARIZATION
NOTE 7



LEAD FREE PRODUCT NUMBER
5 5 1 0 2 - X X X X X X X X X X LF

PLATING
S=15µm[0.38µm]GOLD ON CONTACT AREA
100µm[2.54µm]TIN ON TAIL (NOTE 14)
G=30µm[0.76µm]GOLD ON CONTACT AREA
100µm[2.54µm]TIN ON TAIL (NOTE 14)
T=100µm[2.54µm]TIN ON CONTACT AREA AND ON TAIL (NOTE 9 & 13)
F=2µm[0.05µm]GOLD ON CONTACT AREA AND ON TAIL

PIN STYLE	POST	TAIL
11	0.230/5.84	0.090/2.29
17	0.230/5.84	0.120/3.05
12	0.230/5.84	0.190/4.83
34	0.318/8.08	0.100/2.54
35	0.318/8.08	0.120/3.05
36	0.318/8.08	0.200/5.08

POSITIONS PER ROW
01 TO 36

LEAD FREE
NOTE 10 & 11
RETENTION
R= RETENTIVE LEG
NOTE 6

POLARIZATION
NOTE 7

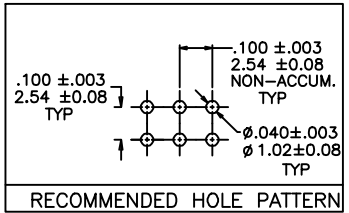
mat'l. code SEE NOTES 1 & 2	surface ISO 902	tolerance ISO 1101	projection ISO 1001	product family BERGSTIK
ltr D V21475 GIP 9/17/02	tolerances unless otherwise specified		INCH/MM	title .100 UNSHROUDED HDR. D/R R/A THRU HOLE
E V03-0731 HTB 7/10/03	angles linear	XXX±.01/XXX±.03 XXX±.06/XXX±.13	scale 1:1	dwg no 55102
F M05-0118 MHT 6/03/05 0'±2'	XXX±.0020/XXX±0.05		sheet 1 of 2 size A3	type Product Customer Drawing
G M06-0268 MHT 7/17/06 dr D.INGRAM 05/20/99	H M06-0435 MHT 10/31/06 eng H.SUNDY 07/21/99		FCJ	
J M08-0237 MHT 8/25/08 chr H.SUNDY 07/21/99	K M08-0279 MHT 9/30/08 appd H.SUNDY 07/21/99			
sheet index	revision sheet	K 1	K 2	



Copyright FCI



Copyright FCI



NOTES:

- ① HOUSING MAT'L: HIGH TEMPERATURE THERMOPLASTIC.
FLAME RETARDANT PER UL 94V-0
COLOR: BLACK
OR
MINERAL FILLED LCP
FLAME RETARDANT PER UL 94V-0
COLOR: BLACK
- ② PIN MATERIAL: PHOSPHOR-BRONZE
- ③ TO DETERMINE DIMENSIONS:
N = NUMBER OF POSITIONS PER ROW.
EXAMPLE: 10 POS., N x .100[2.54]=1.00[25.40].
- ④ 2LBS/0.9KG MIN. PIN RETENTION IN EITHER DIRECTION
- 5. PACKAGED IN POLY BAGS
- ⑥ RETENTIVE LEG APPLICABLE TO TAIL LENGTH .120/3.05 ONLY.
5LB/2.3KG MAX INSERTION FORCE AND .25LB./1KG MIN RETENTION FORCE
PER RETENTIVE PIN USING .062/1.57 THICK CIRCUIT BOARD AND RECOMMENDED
HOLE PATTERN. RETENTIVE LOCATION AT THE DISCRETION OF THE MANUFACTURER.
OMIT FROM PRODUCT NUMBER IF THIS FEATURE IS NOT APPLICABLE.
- ⑦ FOR POLARIZATION SPECIFY POSITION NUMBER(i.e.. A03=ROW A POS 3)
TO OMIT PIN.
OMIT FROM PRODUCT NUMBER IF THIS FEATURE IS NOT APPLICABLE.
- 8. UNDERPLATING: 50μ"/1.27μm Ni.
- 9. PIN TIPS ON Sn PLATED PRODUCT MAY HAVE BARE METAL ON
TWO SIDES, BOTH ENDS.
- ⑩ PART NUMBERS WITH "LF" SUFFIX AT THE END ARE LEAD FREE.
- ⑪ THIS PRODUCT MEETS EUROPEAN UNION DIRECTIVES AND OTHER
COUNTRY REGULATION AS DESCRIBED IN GS-22-008.
- 12. THE HOUSING WILL WITHSTAND EXPOSURE TO 260°C PEAK TEMPERATURE
FOR 20 SECONDS IN A CONVECTION, INFRA-RED OR VAPOR PHASE REFLOW
OVEN. SEE APPLICATION NOTES/PROCEDURES IF THEY ARE AVAILABLE OR
FOR 15 SECONDS IN A WAVE SOLDER APPLICATION WITH A 1.5mm
MINIMUM THICK CIRCUIT BOARD.
- ⑬ "THIS PRODUCT HAS 100% PURE TIN PLATING IN THE INTERFACE AND
HAS NOT BEEN TESTED FOR WHISKER GROWTH IN ALL INTERCONNECT
ENVIRONMENTS."
- ⑭ PLATING OPTIONS:
MAY BE EITHER GOLD OR GXT PLATED AT MANUFACTURER'S OPTION.

mat'l. code SEE NOTES 1 & 2		surface ISO 902	tolerance ISO 406 ISO 7001	projection 	product family BERGSTIK
ltr	ecn no	dr	date	tolerances unless otherwise specified	title .100 UNSHROUDED HDR. D/R R/A THRU HOLE
K				linear XXXL01/XXXL03 XXXL06/XXXL13 XXXL020/XXXL051	INCH/MM scale 1:1
				angles 0°±2'	dwg no 55102
				dr D.INGRAM 05/20/99	sheet 2 of 2 size A3
				engr H.SUNDY 07/21/99	type Product Customer Drawing
				chr H.SUNDY 07/21/99	
				appd H.SUNDY 07/21/99	
sheet	revision				
index	sheet				