

Han D 40 Pos. M Insert Term. Block Right

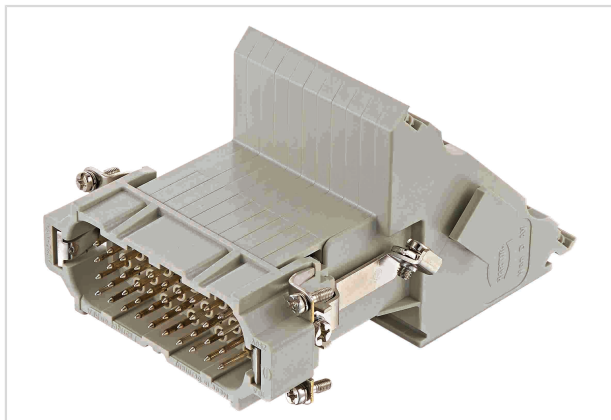


Image is for illustration purposes only. Please refer to product description.

Part number	09 21 040 4611
Specification	Han D 40 Pos. M Insert Term. Block Right
HARTING eCatalogue	https://b2b.harting.com/09210404611

Identification

Category	Inserts
Series	Han D [®] AV
Element	Terminal block connector
Specification	Right hand version Multi contour (MK)

Version

Termination method	Screw termination
Gender	Male
Size	16 B
Number of contacts	40
PE contact	Yes

Technical characteristics

Conductor cross-section	0.2 ... 2.5 mm ²
Rated current	10 A
Rated voltage	250 V
Rated impulse voltage	4 kV
Pollution degree	3
Rated voltage acc. to UL	600 V
Insulation resistance	>10 ¹⁰ Ω
Contact resistance	≤4 mΩ
Tightening torque	0.5 Nm



Pushing Performance

Technical characteristics

Limiting temperature	-40 ... +125 °C
Mating cycles	≥500

Material properties

Material (insert)	Polycarbonate (PC)
Colour (insert)	RAL 7032 (pebble grey)
Material (contacts)	Copper alloy
Surface (contacts)	Silver plated
Material flammability class acc. to UL 94	V-0
RoHS	compliant
ELV status	compliant with exemption
China RoHS	50
REACH Annex XVII substances	No
REACH ANNEX XIV substances	No
REACH SVHC substances	No
California Proposition 65 substances	Yes
California Proposition 65 substances	Lead

Specifications and approvals

Specifications	EN 60664-1 IEC 61984
Approvals	DNV GL
UL / CSA	UL 1977 ECBT2.E235076

Commercial data

Packaging size	1
Net weight	400 g
Country of origin	Germany
European customs tariff number	85366990
eCl@ss	27440205 Contact insert for industrial connectors