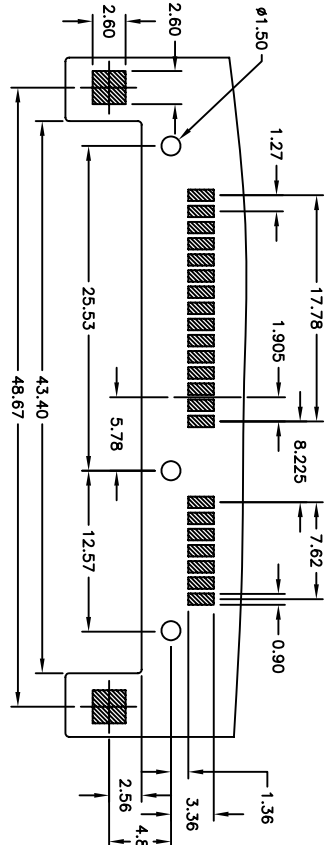
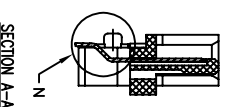
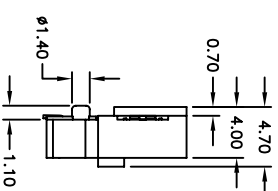
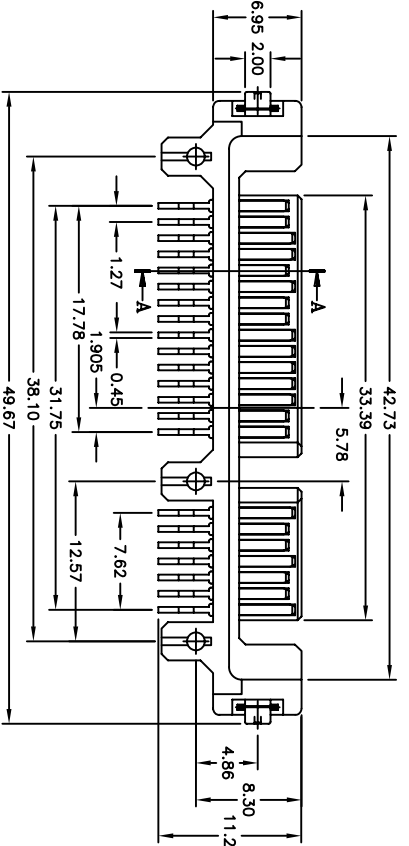
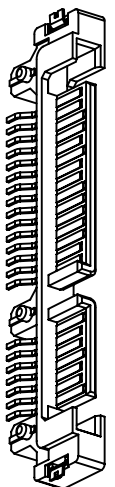
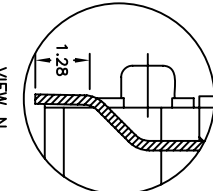
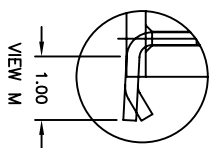
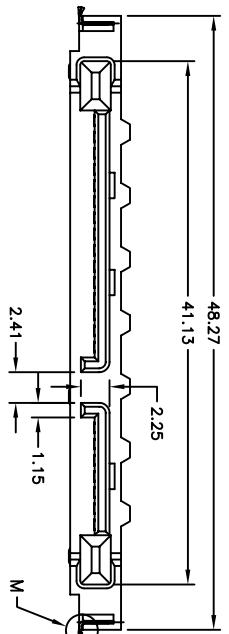


| | | | | |
|-----|-------|-------------|---------|------|
| Rev | AWO # | Description | Date | Appr |
| - | 8936 | RELEASED | 7/31/08 | |

APPROVED: _____
 DATE: _____ TITLE: _____



SPECIFICATIONS:

- Material:** Insulator: LCP, rated UL 94V-0
- Contacts color: Black
- Contacts: Brass
- Shell: Steel, Nickel plated
- Plating: Gold flash over Nickel underplate on mating area, Tin over Copper underplate on tails
- Electrical:** Operating voltage: 30 VAC max
- Current rating: 1.5 Amps max
- Contact resistance: 30 mohms max
- Insulation resistance: 1,000 Mohms min @ 500 VAC
- Dielectric withstanding voltage: 500 VAC for 1 minute
- Mechanical:** Insertion force: 45N max.
- Withdrawal force: 10N min.
- Durability: 500 cycles
- Temperature Rating: Operating temperature: -55°C to +125°C
- Environmental: Lead free, RoHS compliant
- Recommended soldering temp: 260°C for 5 seconds



UNLESS OTHERWISE SPECIFIED
 ALL DIMENSIONS ARE INCHES [MM]
 TOLERANCES: EXCEPT AS NOTED

| | |
|-------------|--------------|
| INCHES | HOLES |
| .X ± .10 | ØXX ± .10 |
| .XX ± .020 | ØXXX ± .015 |
| .XXX ± .015 | ØXXXX ± .010 |

ADAM TECH
 909 Railway Avenue, Union, NJ 07083
 Phone: 908-687-5000 Fax: 908-687-5710

| | | | |
|-----------------------|------------|---------------|------|
| TITLE | SIZE | PART NO. | REV. |
| SERIAL ATA CONNECTOR | X | SATA-S-PM-SMT | |
| TYPE S, SURFACE MOUNT | | | |
| DRAWN | SS | 7/31/08 | |
| CHECKED | | | |
| APPROVED | | | |
| REF: | SCALE: NTS | SHEET 1 OF 1 | |