

**PLEASE CHECK WWW.MOLEX.COM FOR LATEST PART INFORMATION**

**Part Number:** **0190010008**  
**Status:** **Active**  
**Description:** Avikrimp™ Quick Disconnect, Male, for 14-16 (2.00-1.30), Box, Tab 4.75mm (.187") x 0.51mm (.020")

**Documents:**

[Drawing \(PDF\)](#) [RoHS Certificate of Compliance \(PDF\)](#)

**Agency Certification**

|     |          |
|-----|----------|
| CSA | LR18689  |
| TUV | R9071070 |
| UL  | E79133   |

**General**

|                         |                   |
|-------------------------|-------------------|
| Product Family          | Quick Disconnects |
| Series                  | <u>19001</u>      |
| Crimp Quality Equipment | Yes               |
| Product Name            | Avikrimp™         |
| Type                    | Quick Disconnect  |

**Physical**

|                                |                     |
|--------------------------------|---------------------|
| Barrel Type                    | Closed              |
| Flammability                   | 94V-0               |
| Gender                         | Male                |
| Glow-Wire Compliant            | No                  |
| Insulation                     | Nylon (PA)          |
| Lock to Mating Part            | None                |
| Material - Metal               | Copper              |
| Material - Plating Mating      | Zinc Chromate       |
| Material - Plating Termination | Zinc Chromate       |
| Orientation                    | Straight            |
| Packaging Type                 | Bag                 |
| Plating min: Mating (µin)      | 200                 |
| Plating min: Mating (µm)       | 5                   |
| Plating min: Termination (µin) | 200                 |
| Plating min: Termination (µm)  | 5                   |
| Polarized to Mating Part       | No                  |
| Tab Thickness                  | 0.51mm (.020")      |
| Tab Width                      | 4.75mm (.187")      |
| Temperature Range - Operating  | -65°C to +105°C     |
| Wire Insulation Diameter       | 4.32mm (.170") max. |
| Wire Size AWG                  | 14, 16              |
| Wire Size mm²                  | 1.30 - 2.00         |

**Electrical**

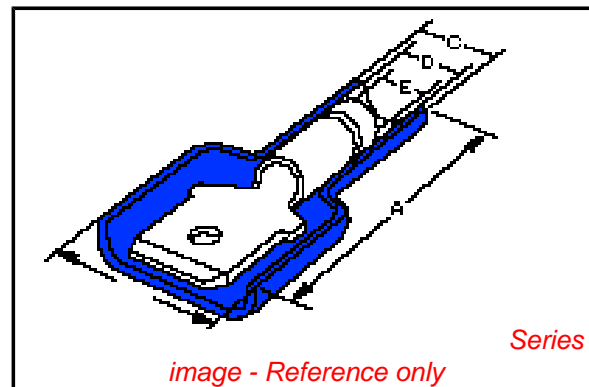
|                   |      |
|-------------------|------|
| Voltage - Maximum | 300V |
|-------------------|------|

**Material Info**

|                 |         |
|-----------------|---------|
| Old Part Number | BB-5268 |
|-----------------|---------|

**Reference - Drawing Numbers**

|               |              |
|---------------|--------------|
| Sales Drawing | SD-19001-003 |
|---------------|--------------|



**EU RoHS**

**ELV and RoHS Compliant**  
**REACH SVHC Contains SVHC: No**  
**Halogen-Free Status**  
**Not Reviewed**

**China RoHS**



**Need more information on product environmental compliance?**

Email [productcompliance@molex.com](mailto:productcompliance@molex.com)  
 For a multiple part number RoHS Certificate of Compliance, [click here](#)

Please visit the [Contact Us](#) section for any non-product compliance questions.

**Search Parts in this Series**

[19001Series](#)

**Use With**

[19002-0028](#) , [19002-0029](#) , [19002-0030](#)

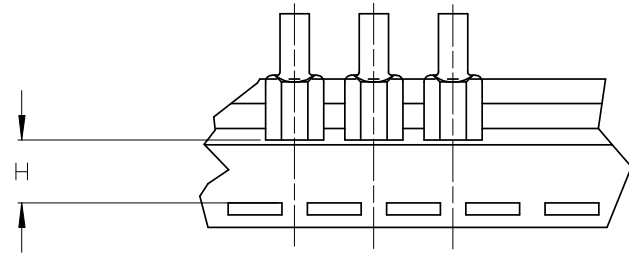
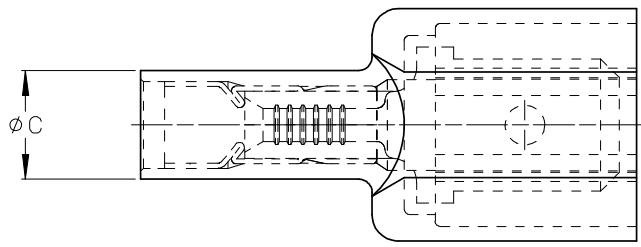
**Application Tooling | FAQ**

*Tooling specifications and manuals are found by selecting the products below. Crimp Height Specifications are then contained in the Application Tooling Specification document.*

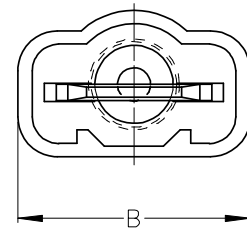
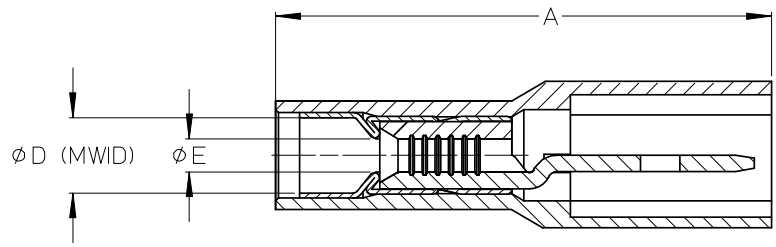
**Global**

| Description                                    | Product #                  |
|--|----------------------------|
| Hand Crimp Tool                                | <a href="#">0640012600</a> |
| Crimp Head for the AT-200™ Pneumatic Hand Tool | <a href="#">0640052600</a> |

| ASSEMBLY NUMBER |                    | TAPE NUMBER     |                  | ITEM DESCRIPTION |                                       |                           | DIMENSIONS |          |         |           |              |          |
|-----------------|--------------------|-----------------|------------------|------------------|---------------------------------------|---------------------------|------------|----------|---------|-----------|--------------|----------|
| MATERIAL NUMBER | ENGINEERING NUMBER | MATERIAL NUMBER | TAPE ENG. NUMBER | COLOR            | WIRE GAUGE                            | TAB SIZE                  | 'A' MAX    | 'B' MAX  | 'C' MAX | 'D' MIN   | 'E' MIN      | 'H' REF  |
| 190010001       | AA-5260            | 190010002       | AA-5260T         | RED              | 22-18AWG (0.38-0.96mm <sup>2</sup> )  | .250 x .032 (6.35 x 0.81) | .96/24.4   | .45/11.4 | .22/5.6 | .140/3.56 | (A).054/1.37 | .48/12.2 |
| 190010003       | AA-5266            | 190010005       | AA-5266T         | RED              | 22-18AWG (0.38-0.96mm <sup>2</sup> )  | .187 x .020 (4.75 x 0.51) | .90/22.9   | .38/9.7  | .22/5.6 | .170/4.32 | (A).054/1.37 | .52/13.3 |
| 190010006       | BB-5262            | 190010007       | BB-5262T         | BLUE             | 16-14 AWG (1.23-1.94mm <sup>2</sup> ) | .250 x .032 (6.35 x 0.81) | .96/24.4   | .45/11.4 | .25/6.4 | .140/3.56 | .084/2.13    | .48/12.2 |
| 190010008       | BB-5268            | 190010009       | BB-5268T         | BLUE             | 16-14 AWG (1.23-1.94mm <sup>2</sup> ) | .187 x .020 (4.75 x 0.51) | .90/22.9   | .38/9.7  | .25/6.4 | .170/4.32 | .084/2.13    | .52/13.3 |



TAPE MOUNTING DETAIL



- (A) NOTES:
1. TERMINAL MATERIAL: BRASS
  2. TERMINAL PLATING: ZINC CHROMATE
  3. HOUSING: 6/6 NYLON
  4. MWID: MAXIMUM WIRE INSULATION DIAMETER
  5. TAB DIMENSIONS CONFORM TO UL310 SPECIFICATIONS.
  6. ASSEMBLY IS ROHS COMPLIANT

| <b>REDRAW, MATERIALS</b><br>EEC NO: ETC2007-0081<br>DRWN:EHILE 2008/01/28<br>CHKD:MACNEIL 2008/01/28<br>APPR:MACNEIL 2008/02/13<br>REV DESCRIPTION<br>A | QUALITY SYMBOLS<br>▽=0<br>∇=0 | GENERAL TOLERANCES (UNLESS SPECIFIED)<br><table border="1"> <thead> <tr> <th></th> <th>mm</th> <th>INCH</th> </tr> </thead> <tbody> <tr> <td>4 PLACES</td> <td>±---</td> <td>±---</td> </tr> <tr> <td>3 PLACES</td> <td>±---</td> <td>±.005</td> </tr> <tr> <td>2 PLACES</td> <td>±0.13</td> <td>±.01</td> </tr> <tr> <td>1 PLACE</td> <td>±0.25</td> <td>±---</td> </tr> <tr> <td colspan="3">ANGULAR ±---°</td> </tr> </tbody> </table> |   | mm                 | INCH | 4 PLACES | ±--- | ±--- | 3 PLACES | ±--- | ±.005 | 2 PLACES | ±0.13 | ±.01 | 1 PLACE | ±0.25 | ±--- | ANGULAR ±---° |  |  | DIMENSION STYLE (A)<br>IN/MM | SCALE 4:1<br>DESIGN UNITS INCH<br>THIRD ANGLE PROJECTION | DRAWN BY RCM<br>DATE 1990/05/11<br>CHECKED BY RDEROSS<br>DATE 1990/05/11<br>APPROVED BY RDEROSS<br>DATE 1990/05/11 | TITLE<br>AVIKRIMP FULLY INSULATED MALE TAB |
|---|-------------------------------|---|---|--------------------|------|----------|------|------|----------|------|-------|----------|-------|------|---------|-------|------|---------------|--|--|------------------------------|--|--|--|
|   |                               | mm  | INCH  |                    |      |          |      |      |          |      |       |          |       |      |         |       |      |               |  |  |                              |  |  |  |
|   | 4 PLACES                      | ±---  | ±---  |                    |      |          |      |      |          |      |       |          |       |      |         |       |      |               |  |  |                              |  |  |  |
|   | 3 PLACES                      | ±---  | ±.005   |                    |      |          |      |      |          |      |       |          |       |      |         |       |      |               |  |  |                              |  |  |  |
| 2 PLACES  | ±0.13                         | ±.01  |   |                    |      |          |      |      |          |      |       |          |       |      |         |       |      |               |  |  |                              |  |  |  |
| 1 PLACE   | ±0.25                         | ±---  |   |                    |      |          |      |      |          |      |       |          |       |      |         |       |      |               |  |  |                              |  |  |  |
| ANGULAR ±---°   |                               |   |   |                    |      |          |      |      |          |      |       |          |       |      |         |       |      |               |  |  |                              |  |  |  |
| DRAFT WHERE APPLICABLE MUST REMAIN WITHIN DIMENSIONS  |                               | MATERIAL NO. SEE CHART<br>SIZE B  | DOCUMENT NO. SD-19001-003<br>SHEET NO. 1 OF 1 | MOLEX INCORPORATED |      |          |      |      |          |      |       |          |       |      |         |       |      |               |  |  |                              |  |  |  |
| THIS DRAWING CONTAINS INFORMATION THAT IS PROPRIETARY TO MOLEX INCORPORATED AND SHOULD NOT BE USED WITHOUT WRITTEN PERMISSION                           |                               |   |   |                    |      |          |      |      |          |      |       |          |       |      |         |       |      |               |  |  |                              |  |  |  |