

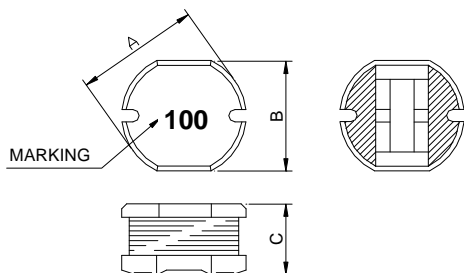
**SMD Type Power Inductor** **FPI0503BMV-Series**

**1. Features**

1. Excellent solderability and high heat resistance.
2. Excellent terminal strength construction.
3. Packed in embossed carrier tape and can be used by automatic mounting machine.
4. 100% Lead(Pb) & Halogen-Free and RoHS compliant.
5. High reliability -Reliability test meet AEC-Q200.
6. Operating temperature:-55~+125°C (Including self - temperature rise)



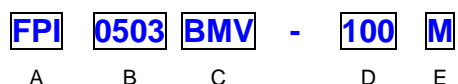
**2. Dimensions**



Size	A	B	C
FPI 0503	5.80±0.3	5.20±0.3	3.00±0.3

Units: mm

**3. Part Numbering**



- A: Series
- B: Dimension
- C: Lead free type                      Black marking V=Vehicle
- D: Inductance                            100=10uH
- E: Inductance Tolerance                M=±20%

## 4. Specification

TAI-TECH Part Number	Inductance ( $\mu$ H)	Tolerance (%)	Test Frequency (Hz)	DCR ( $m\Omega$ ) max.	Isat (A) max.	Irms (A) max.
FPI 0503BMV-1R5M	1.5	$\pm 20\%$	1V/100K	37	4.10	4.10
FPI 0503BMV-1R8M	1.8	$\pm 20\%$	1V/7.96M	50	4.00	2.80
FPI 0503BMV-4R7M	4.7	$\pm 20\%$	1V/7.96M	130	1.30	1.30
FPI 0503BMV-6R8M	6.8	$\pm 20\%$	1V/7.96M	71.2	1.87	1.87
FPI 0503BMV-8R2M	8.2	$\pm 20\%$	1V/7.96M	100	2.00	2.00
FPI 0503BMV-100M	10	$\pm 20\%$	1V/2.52M	200	1.90	1.90
FPI 0503BMV-330M	33	$\pm 20\%$	1V/2.52M	450	1.40	1.40

Note:

Based on inductance change ( $\Delta L/L0$  : 35%) @ ambient temp. 25°C

Based on temperature rise ( $\Delta T$  : 40°C typ. )