

REV	ECN NO.	APPD.
A	BC04716111	COREL
B	BC05738157	Hao Gu
C	BC-07-7065139	Hao Gu

SPECIFICATION:

- GENERAL CHARACTERISTICS :
 - 1-1 CURRENT RATING : 1A MAX.
 - 1-2 VOLTAGE RATING : 30V.
 - 1-3 OPERATING TEMPERATURE : -55°C TO +85°C.
- MECHANICAL CHARACTERISTICS:
 - 2-1 MATING FORCE : 45N(4.5Kgf) MAX.
 - 2-2 UNMATING FORCE : 9~27N(0.90~2.7Kgf).
 - 2-3 DURABILITY: 500 CYCLES.
- ELECTRICAL CHARACTERISTICS :
 - 3-1 CONTACT RESISTANCE : 30 MILLIOHMS MAX.
 - 3-2 INSULATION RESISTANCE : 1000 MEGAOHMS MIN.
 - 3-3 DIELECTRIC WITHSTANDING VOLTAGE : 750V RMS AC MIN. AT SEA LEVEL.
- RECOMMENDED THE THICKNESS OF P.C.B: 1.57±0.05[.062±.002].
- RECOMMENDED PROCESS: WAVE SOLDER
PEAK TEMPERATURE: 260°C . 3~5 SECONDS.
- RECOMMENDED PLUG SHOULD MEET 1076-4-105 OF IEC.
- ROHS COMPLIANT.

REMARKS:

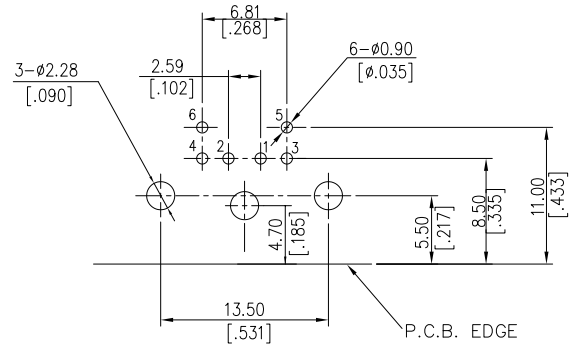
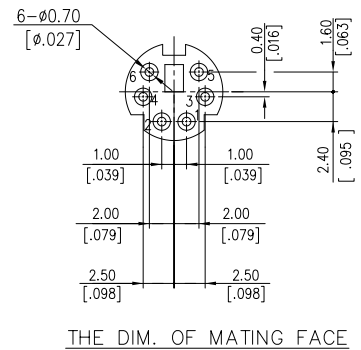
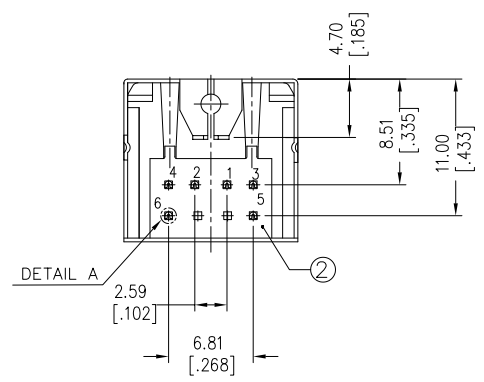
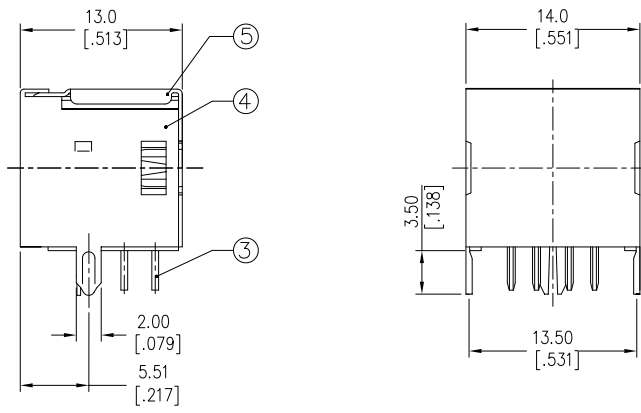
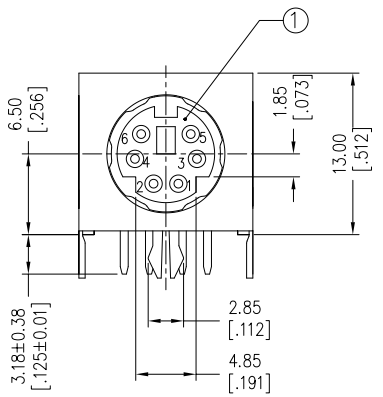
PROD.NO.: MH 1 1 06 * - P H * - 4 F

TERMINATION TYPE: _____ LEAD FREE CODE
 1=RIGHT ANGLE _____ PACKAGING CODE
 CONTACT DESIGN TYPE: _____ 4=TRAY
 1=FEMALE _____ EXTENSION CODE

NO. OF CONTACT: _____ CONTACT PLATING
 06=6 POS. 1=GOLD FLASH
 7=15u" GOLD PLATING
 3=30u" GOLD PLATING

5	REAR SHELL	1	COPPER ALLOY	LEAD FREE TIN ALLOY PLATED OVER NICKLE OVERALL	
4	FRONT SHELL	1	COPPER ALLOY	LEAD FREE TIN ALLOY PLATED OVER NICKLE OVERALL	
3	CONTACT	6	COPPER ALLOY	GOLD PLATING AT CONTACT AREA, LEAD FREE TIN ALLOY AT TAIL, OVER NICKLE OVERALL	
2	SPACER	1	LOW-TEMP. THERMOPLASTIC UL 94V-0	MOLDED	
1	HOUSING	1	LOW-TEMP. THERMOPLASTIC UL 94V-0	MOLDED	

ITEM	DESC.	Q'TY	MATERIAL	TREATMENT	REMARK
X.	X°	UNITS	mm [INCH]	NAME(INTENDED USE)	
.X± 0.38[.015]	.X°	MAT'L	N/A	CUSTOMER	
.XX± 0.25[.010]	.XX°			PART NO.(INTENDED USE)	
.XXX	.XXX°	FINISH	N/A	MH1106*-PH*-4F	
THESE DRAWINGS AND SPECIFICATIONS ARE THE PROPERTY OF HON HAI PRECISION IND. CO., LTD. AND SHALL NOT BE REPRODUCED, COPIED OR USED IN ANY MANNER WITHOUT THE PRIOR WRITTEN CONSENT OF HON HAI PRECISION IND. CO., LTD.				Q'TY	N/A
			CHKD: Z.Q Mou 10/10/07	DWG NO.: 313-0000-1033	
			DR: Y.H. LIU 10/10/07	SCALE: N/A	SHEET: 1/1
					REV: C



RECOMMENDED P.C.B LAYOUT
(COMPONENT SIDE VIEW)

DEFAULT TOLERANCE : .XX±0.05[.002]

MH1106*-PH2-4F	PURPLE
MH1106*-PH1-4F	GREEN
P/N	COLOR