

PLEASE CHECK WWW.MOLEX.COM FOR LATEST PART INFORMATION

Part Number: [0712433102](#)
Status: **Active**
Description: 1.27mm (.050") Pitch DDR DIMM Socket, Single Key, Vertical, Plastic Peg, 184 Circuits

Documents:

[3D Model](#) [Product Specification PS-71243-9999 \(PDF\)](#)
[Drawing \(PDF\)](#) [RoHS Certificate of Compliance \(PDF\)](#)

General

Product Family	Memory Module Sockets
Series	71243
Component Type	Memory Module
JEDEC Outline	N/A
Product Name	DIMM

Physical

Circuits (Loaded)	184
Circuits (maximum)	184
Color - Resin	Black, Natural
Durability (mating cycles max)	25
Entry Angle	Vertical (Top Entry)
Function Key	None
Keying to Mating Part	Yes
Material - Metal	Phosphor Bronze, Stainless Steel
Material - Plating Mating	Gold
Material - Plating Termination	Tin
Material - Resin	High Temperature Thermoplastic
PC Tail Length (in)	0.127 In
PC Tail Length (mm)	3.23 mm
PCB Locator	Yes
PCB Retention	Yes
PCB Thickness Recommended (in)	0.062 In
PCB Thickness Recommended (mm)	1.57 mm
Packaging Type	Tray
Pitch - Mating Interface (in)	0.050 In
Pitch - Mating Interface (mm)	1.27 mm
Pitch - Term. Interface (in)	0.050 In
Pitch - Term. Interface (mm)	1.27 mm
Plating min: Mating (µin)	2
Plating min: Mating (µm)	0.05
Plating min: Termination (µin)	150
Plating min: Termination (µm)	3.81
Temperature Range - Operating	-40°C to +85°C
Termination Interface: Style	Through Hole

Electrical

Current - Maximum per Contact	1A
Voltage - Maximum	100V AC (RMS)/DC
Voltage Key	Left

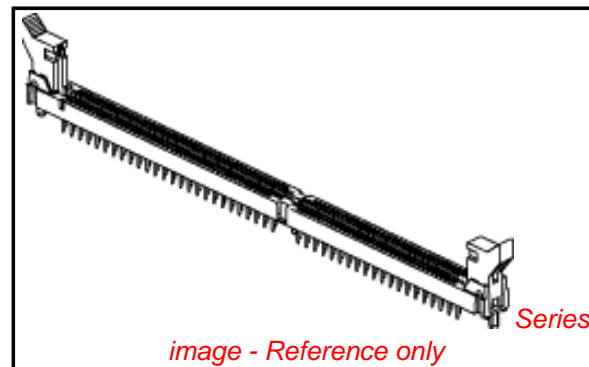
Solder Process Data

Lead-free Process Capability	Wave Capable (TH only)
------------------------------	------------------------

Material Info

Reference - Drawing Numbers

Product Specification	PS-71243-9999
-----------------------	---------------



EU RoHS

**ELV and RoHS
Compliant**
**REACH SVHC
Contains SVHC: No
Halogen-Free
Status**

China RoHS



**Need more information on product
environmental compliance?**

Email productcompliance@molex.com
For a multiple part number RoHS Certificate of
Compliance, [click here](#)

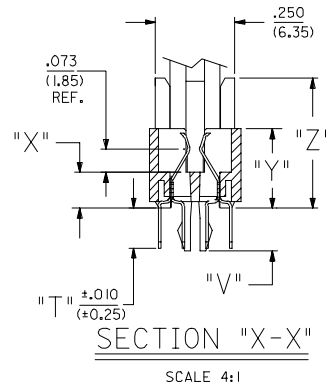
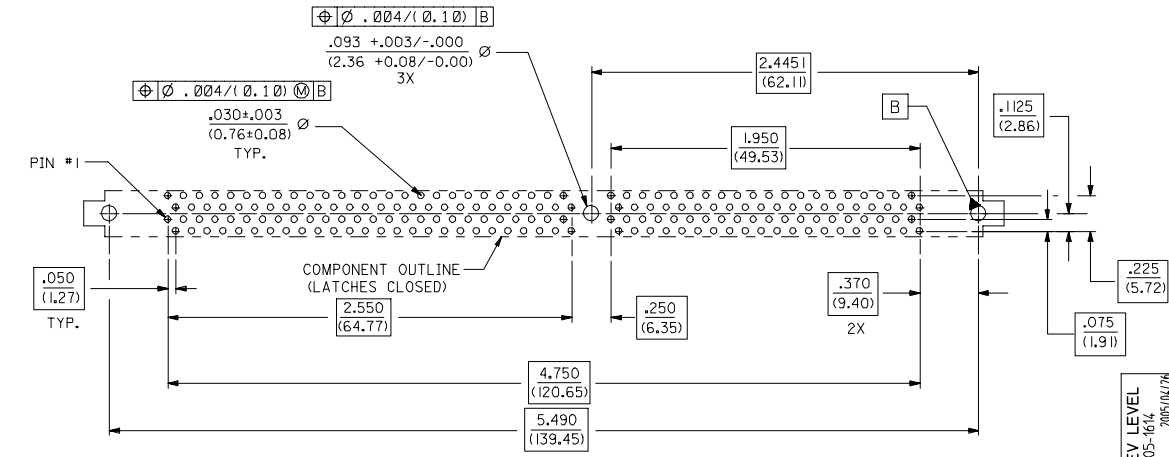
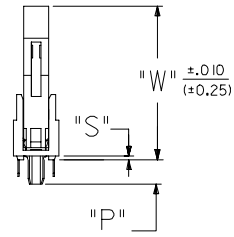
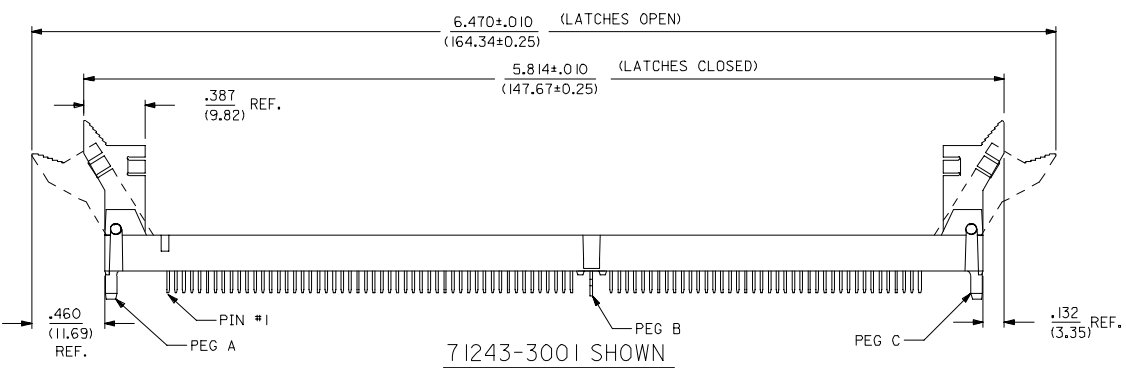
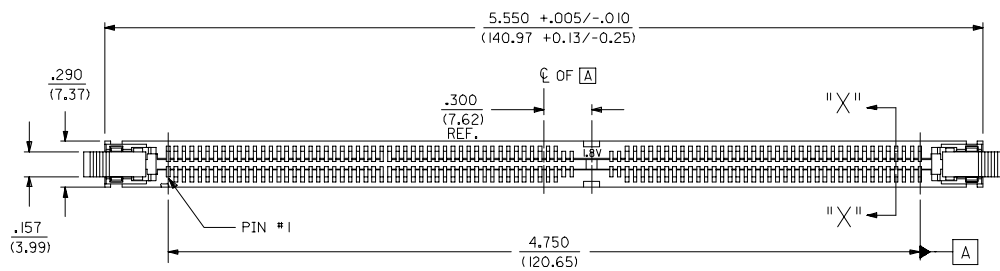
Please visit the [Contact Us](#) section for any
non-product compliance questions.

Search Parts in this Series

71243Series

This document was generated on 04/13/2010

PLEASE CHECK WWW.MOLEX.COM FOR LATEST PART INFORMATION



RECOMMENDED
P.C. BOARD HOLE PATTERN
(CONNECTOR SIDE)

NOTES:
1. CARD SLOT ACCEPTS .050 \pm .004 (1.27 \pm 0.10) MODULE THICKNESS. (MEASURED OVER P.C. PADS).
2. ALL PEGS ARE INTERFERENCE FITS TO PCB UNLESS NOTED .
3. REFER TO PRODUCT SPEC PS-71243-9999 FOR PERFORMANCE SPECIFICATIONS.
4. PRODUCT IS PACKAGED IN TRAYS PER PK-70873-0609.
5. RECOMMENDED MODULE LAYOUT SHALL BE PER SHEET 2.
6. RECOMMENDED PLATING ON MODULE PADS: 30 MICROINCH/(0.76 MICROMETER) MINIMUM HARD GOLD (Au) OVER 79 MICROINCH/(2.0 MICROMETER) MINIMUM NICKEL (Ni).
7. PRODUCT WILL HAVE DATE CODE STAMPED ON SIDE OF HOUSING.

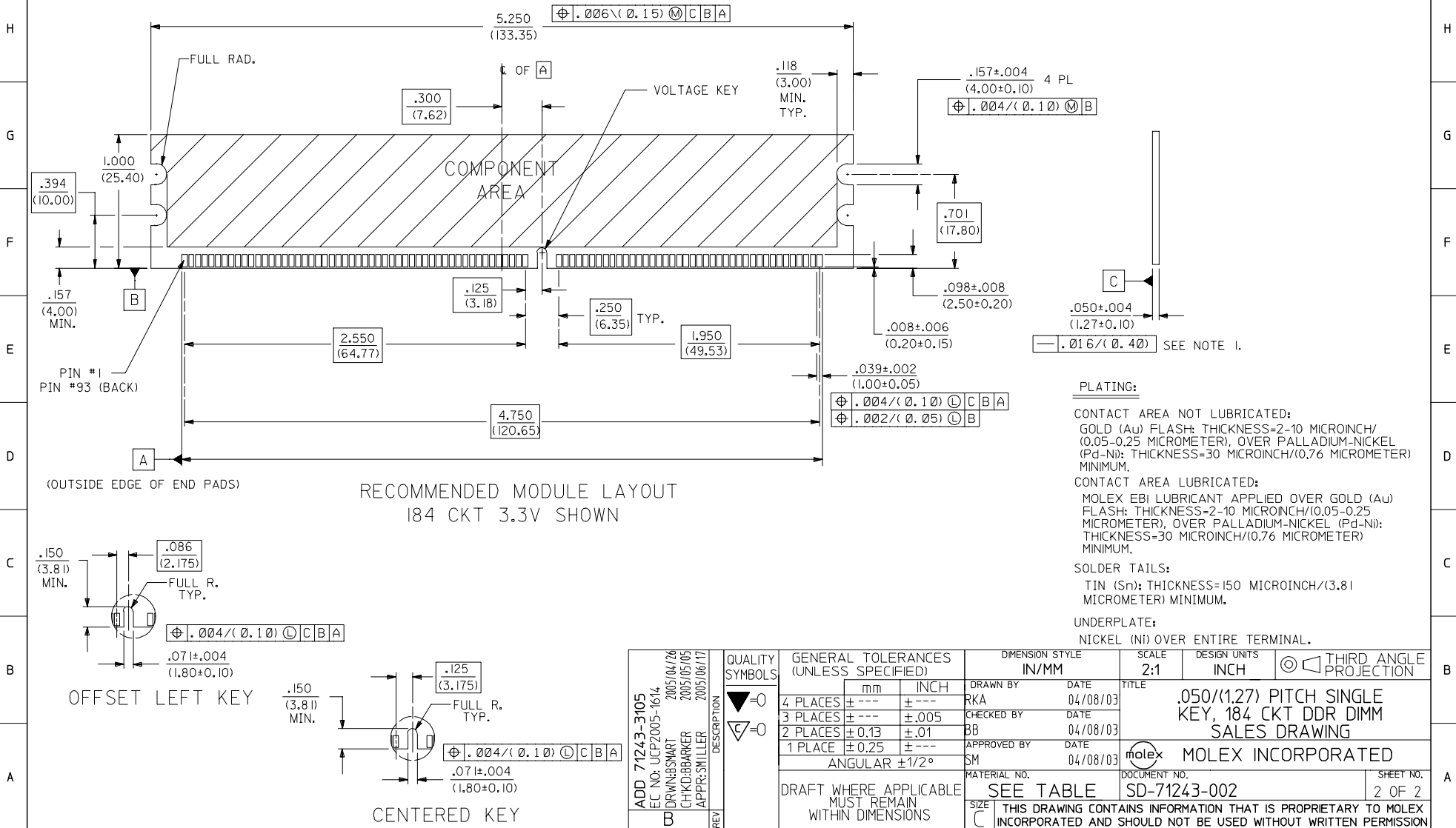
MATERIALS:
HOUSING - GLASS FILLED LIQUID CRYSTAL POLYMER (LCP), UL 94V-0, COLOR: BLACK.
TERMINAL- PHOSPHOR BRONZE
LATCHES - GLASS FILLED HIGH TEMPERATURE NYLON, UL 94V-0, COLOR: IVORY.

PLATING:
SEE SHEET 2.

2	B
1	B
SHT REV	

UPDATE REV LEVEL IEC NO. UCP2005-1674 DRAWN BY: DRWINHSMART CHECKED BY: CHICKBARKER APPR: SHILLER 2005/04/26 2005/05/05 2005/04/17	QUALITY SYMBOLS ▽=0 ▽=0	GENERAL TOLERANCES (UNLESS SPECIFIED) <table border="1"> <tr> <th></th> <th>mm</th> <th>INCH</th> </tr> <tr> <td>4 PLACES</td> <td>± .005</td> <td>± .001</td> </tr> <tr> <td>3 PLACES</td> <td>± .005</td> <td>± .001</td> </tr> <tr> <td>2 PLACES</td> <td>± 0.13</td> <td>± 0.01</td> </tr> <tr> <td>1 PLACE</td> <td>± 0.25</td> <td>± .005</td> </tr> </table> ANGULAR ±1/2°		mm	INCH	4 PLACES	± .005	± .001	3 PLACES	± .005	± .001	2 PLACES	± 0.13	± 0.01	1 PLACE	± 0.25	± .005	DIMENSION STYLE IN/MM	SCALE 2:1	DESIGN UNITS INCH	THIRD ANGLE PROJECTION
		mm	INCH																		
	4 PLACES	± .005	± .001																		
	3 PLACES	± .005	± .001																		
2 PLACES	± 0.13	± 0.01																			
1 PLACE	± 0.25	± .005																			
DRAFT WHERE APPLICABLE MUST REMAIN WITHIN DIMENSIONS	DRAWN BY: RKA CHECKED BY: BB APPROVED BY: SM DATE: 04/08/03 DATE: 04/08/03 DATE: 04/08/03	MATERIAL NO. SEE TABLE	DOCUMENT NO. SD-71243-002	TITLE .050/(1.27) PITCH SINGLE KEY, 184 CKT DDR DIMM SALES DRAWING	MOLEX INCORPORATED	SHEET NO. 1 OF 2															
THIS DRAWING CONTAINS INFORMATION THAT IS PROPRIETARY TO MOLEX INCORPORATED AND SHOULD NOT BE USED WITHOUT WRITTEN PERMISSION																					

PART NUMBER	DESCRIPTION	VOLTAGE KEY	PEG A	PEG B	PEG C	DIM. "P"	DIM. "S"	DIM. "T"	DIM. "V"	DIM. "W"	DIM. "X"	DIM. "Y"	DIM. "Z"	TERMINAL TYPE	NOTES:
71243-3102	1.8 VOLT VDDQ	CENTER	PLASTIC PEG	METAL FORKLOCK	PLASTIC PEG	.155 (3.94)	.020 (0.51)	.127 (3.23)	.135 (3.43)	.970 (24.64)	.113 (2.87)	.250 (6.35)	.410 (10.41)	NOT LUBRICATED	1. STRAIGHTNESS OF MODULE APPLIES TO THE AREA FROM THE BOTTOM OF THE CARD UP .157/(4.00). 2. IF TIE BARS ARE ATTACHED TO PADS, THE TIE BAR SHOULD BE ON AN INTERNAL LAYER, SO THAT THE REMNANT CANNOT CAUSE DAMAGE TO THE CONTACTS.
	2.5 VOLT VDDQ	OFFSET LEFT	PLASTIC PEG	METAL FORKLOCK	PLASTIC PEG	.155 (3.94)	.020 (0.51)	.127 (3.23)	.135 (3.43)	.970 (24.64)	.113 (2.87)	.250 (6.35)	.410 (10.41)	NOT LUBRICATED	
71243-3105	1.8 VOLT VDDQ	CENTER	PLASTIC PEG	METAL FORKLOCK	PLASTIC PEG	.155 (3.94)	.020 (0.51)	.127 (3.23)	.135 (3.43)	.970 (24.64)	.113 (2.87)	.250 (6.35)	.410 (10.41)	LUBRICATED	
	2.5 VOLT VDDQ	OFFSET LEFT	PLASTIC PEG	NONE	PLASTIC PEG	.155 (3.94)	.020 (0.51)	.127 (3.23)		.970 (24.64)	.113 (2.87)	.250 (6.35)	.410 (10.41)	NOT LUBRICATED	



RECOMMENDED MODULE LAYOUT
184 CKT 3.3V SHOWN

PLATING:

CONTACT AREA NOT LUBRICATED:
GOLD (Au) FLASH: THICKNESS=2-10 MICROINCH/
(0.05-0.25 MICROMETER), OVER PALLADIUM-NICKEL
(Pd-Ni): THICKNESS=30 MICROINCH/(0.76 MICROMETER)
MINIMUM.
CONTACT AREA LUBRICATED:
MOLEX EBI LUBRICANT APPLIED OVER GOLD (Au)
FLASH: THICKNESS=2-10 MICROINCH/0.05-0.25
MICROMETER, OVER PALLADIUM-NICKEL (Pd-Ni):
THICKNESS=30 MICROINCH/(0.76 MICROMETER)
MINIMUM.

SOLDER TAILS:

TIN (Sn): THICKNESS=150 MICROINCH/(3.81
MICROMETER) MINIMUM.

UNDERPLATE:

NICKEL (Ni) OVER ENTIRE TERMINAL.

ADD 71243-3105 EC NO: UCP2005-1614 2005/04/26 DRW:BSMART CHK:DBARKER 2005/05/05 APPR:SMILLER 2005/06/17	QUALITY SYMBOLS 	GENERAL TOLERANCES (UNLESS SPECIFIED)		DIMENSION STYLE		SCALE	DESIGN UNITS	THIRD ANGLE PROJECTION			
				IN/MM		2:1	INCH				
				mm	INCH	DRAWN BY	DATE	TITLE			
						RKA	04/08/03	.050/(1.27) PITCH SINGLE KEY, 184 CKT DDR DIMM SALES DRAWING			
				CHECKED BY		DATE		MATERIAL NO.			
				BB		04/08/03		DOCUMENT NO.			
				APPROVED BY		DATE		SHEET NO.			
				SM		04/08/03		2 OF 2			
				MATERIAL NO.		DOCUMENT NO.		THIS DRAWING CONTAINS INFORMATION THAT IS PROPRIETARY TO MOLEX INCORPORATED AND SHOULD NOT BE USED WITHOUT WRITTEN PERMISSION			
				SEE TABLE		SD-71243-002					