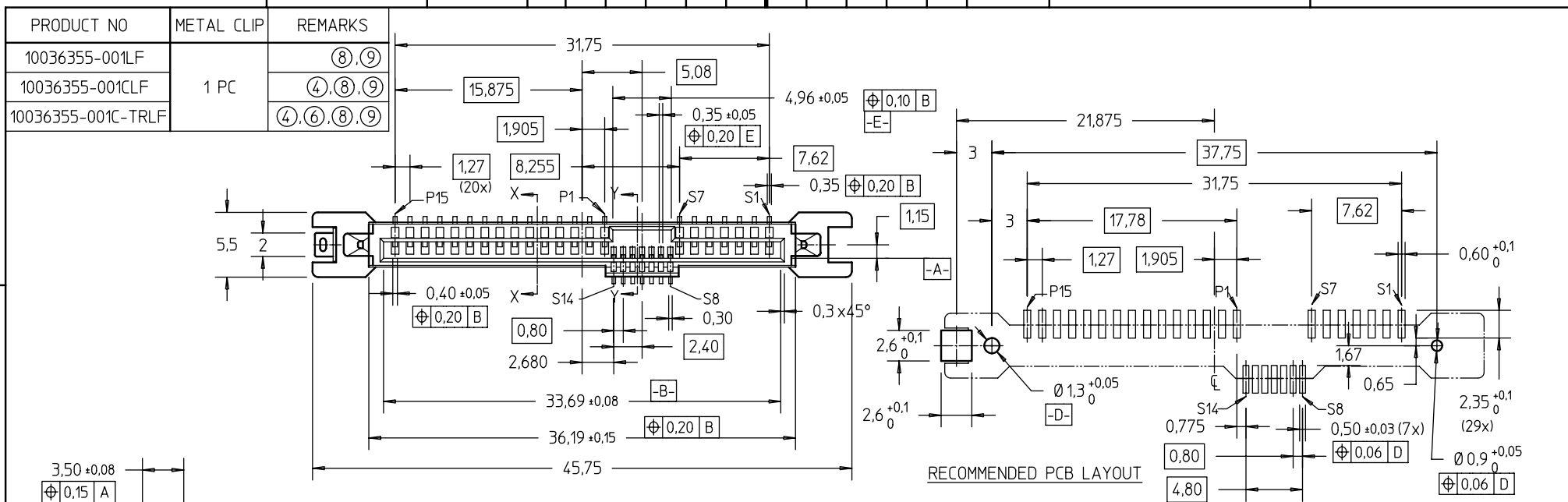


FCI CONFIDENTIAL



This document is the property of and embodies CONFIDENTIAL and PROPRIETARY information of FCI. No part of the information shown on this document may be used in any way or disclosed to others without the written consent of FCI. Copyright FCI.



RECOMMENDED PCB LAYOUT

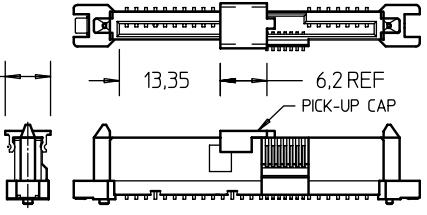
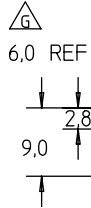
P4 & P12 GROUNDS ONLY

SECT X-X

SECT Y-Y

NOTES:

- MATERIAL:
  - HOUSING : HIGH TEMP TERMOPLASTIC, UL 94V-0, BLACK COLOR
  - TERMINAL : COPPER ALLOY
  - HOLD DOWN : COPPER ALLOY
- FINISH :
  - TERMINAL : 30u" Au PLATING (CONTACT POINT) OVER 50u" NICKEL
  - SOLDER TAIL : 100u" min Sn OVER 50u" NICKEL
  - HOLD DOWN : 100u" min Sn OVER 50u" NICKEL
- PER SFF REV 11
- PART WITH PICK-UP CAP, P/N XXXXXXXX-XXXX\_LF
- THE STD PACKAGING IS IN TRAY
- FOR TAPE & REEL PACKAGING, SUFFIX \*-TR\* ADDED, P/N XXXXXXXX-XXXX-TR\_LF



PART WITH PICK-UP CAP, SEE NOTE ④

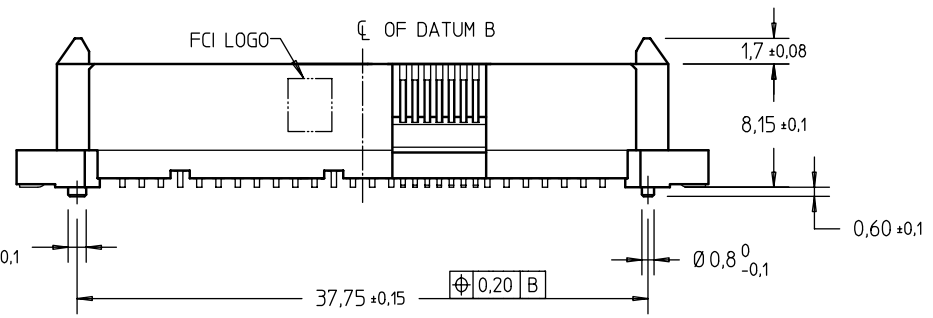
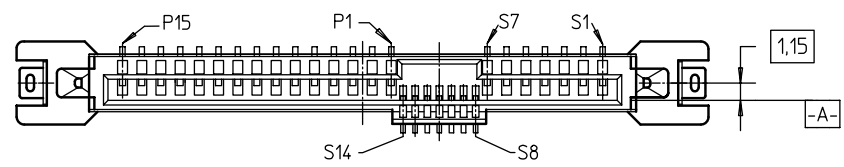
mat'l code		surface	tolerance	projection	product family
		ISO 1302	ISO 406 ISO 1101		SAS
tr		tolerances unless otherwise specified		mm	title
A	S04-0077	GLL	2004-04-20		SAS RECEPTACLE VERTICAL SMT TYPE ASSY
B	S04-0190	GLL	2004-09-09		
C	S04-0226	GLL	2004-10-26	angles	scale 2 : 1
D	S05-0026	GLL	2005-02-14	linear	
E	S05-0292	GLL	2005-10-12	± 2°	dwg no
F	S06-0281	GLL	2006-08-28	dr	10036355
G	S09-0261	GLL	2009-08-19	enr	sheet 1 of 2
				appd	size
				JOEY NG	A4
sheet	revision	G	G	type CUSTOMER Drawing	
index	sheet	1	2		

FCI CONFIDENTIAL



This document is the property of and embodies CONFIDENTIAL and PROPRIETARY information of FCI. No part of the information shown on this document may be used in any way or disclosed to others without the written consent of FCI. Copyright FCI.

PRODUCT NO	METAL CLIP	REMARKS
10036355-002LF	2 PCS	⑧,⑨
10036355-002CLF		④,⑧,⑨
10036355-002C-TRLF		④,⑥,⑧,⑨

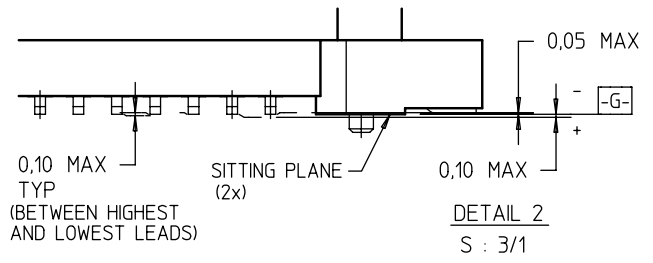
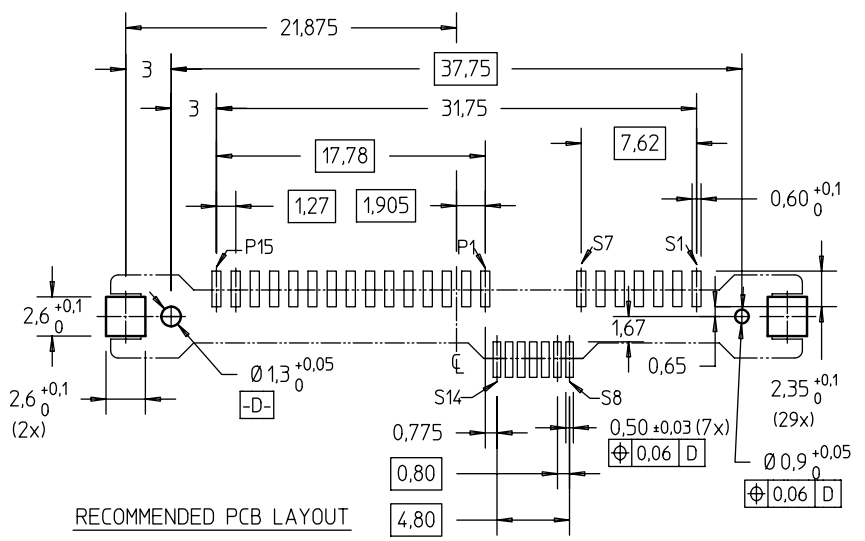
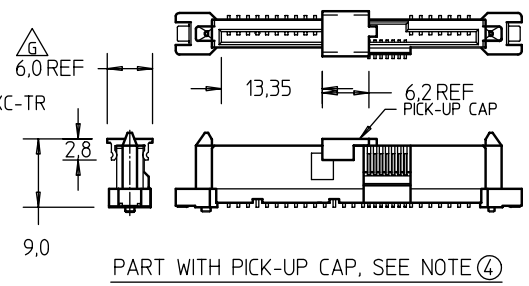


NOTES:  
ALL OTHER DIMENSIONS, REFER TO SHEET 1.

- NOTES: (cont'd)
- 7 THE HOUSING WILL WITHSTAND EXPOSURE TO 260°C PEAK TEMPERATURE FOR 10 SECONDS IN A CONVECTION, INFRA-RED OR VAPOR PHASE REFLOW OVEN.
  - ⑧ THIS PRODUCT MEETS EUROPEAN UNION DIRECTIVES AND OTHER COUNTRY REGULATIONS AS DESCRIBED IN GS-22-008.
  - ⑨ PART NUMBERS ENDING IN "LF" MEANS FOR NOTE 8 LEAD FREE IDENTIFICATION.

THE EQUIVALENT P/N FOR "LF" DESIGNATION:

- (i) XXXXXXXX-XXXLF IS SAME AS XXXXXXXX-XXX
- (ii) XXXXXXXX-XXXCLF IS SAME AS XXXXXXXX-XXXC
- (iii) XXXXXXXX-XXXC-TRLF IS SAME AS XXXXXXXX-XXXC-TR



mat'l code		surface	tolerance	projection	product family
ltr		ISO 1302	ISO 406 ISO 1101		SAS
ecn no		tolerances unless otherwise specified			title
dr		angles	linear	mm	SAS RECEPTACLE
g		± 2°	= ±0,20	scale 2:1	VERTICAL SMT TYPE ASSY
dr		GL L00	2004-04-20		dwg no
enr		GL L00	2004-04-20		sheet 2 of 2
chr		GL L00	2009-08-19		size
appd		JOEY NG	2009-08-19		A4
sheet index	revision sheet	type			CUSTOMER Drawing
1	1				