

NOTES: UNLESS OTHERWISE SPECIFIED

1. MATERIAL SPECIFICATION:

BODY: BRASS PER ASTM B16

RETAINING RING: BERYLLIUM COPPER PER ASTM B194

2. FINISH SPECIFICATION:

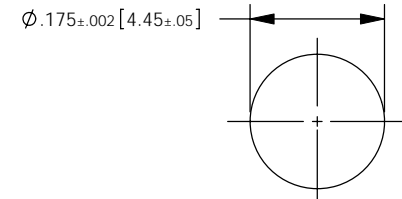
BODY: .000030 MIN. GOLD PER ASTM B488 OVER

.000050 MIN. NICKEL PER QQ-N-290

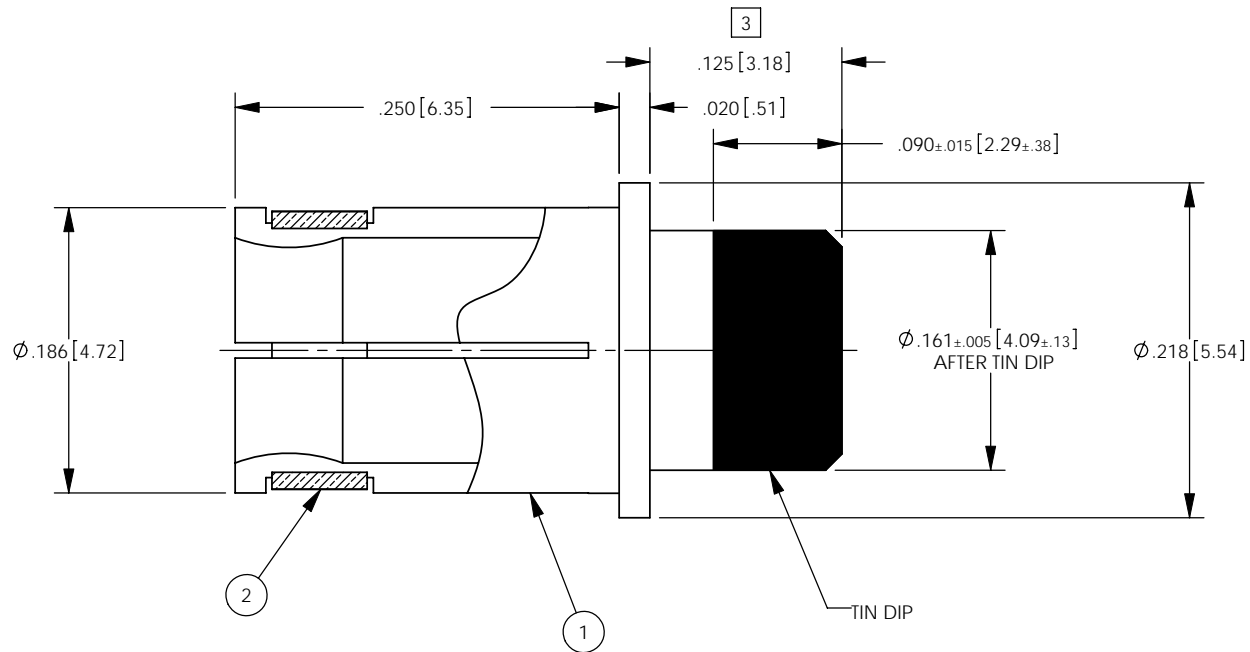
RETAINING RING: .000100 MIN. NICKEL PER QQ-N-290

3. THIS DIMENSION CAN BE .150" MAX AFTER TIN DIP.

REV	DESCRIPTION	BY DATE	APPD
E	REVISED PER ER7306	04/14/08 CMB	CMB



RECOMMENDED MOUNTING HOLE



PER ASME Y14.5M-1994
UNLESS OTHERWISE SPECIFIED:
DIMENSIONS ARE IN INCHES (MM)
TOLERANCES:
DECIMAL: XX [X.X] ± .01 [0.3]
 XXX [X.XX] ± .005 [0.13]
 XXXX [X.XXX] ± .XXXX
ANGLES: ± 2° SCALE: 8:1

Winchester Electronics
Winchester Electronics Corporation
62 Barnes Industrial Road North
Wallingford, Connecticut 06492

DRAWN		DATE		APPROVED		DATE	
JED	10/02/97	AT	10/02/97				
APPROVED		DATE		APPROVED		DATE	
JM	10/02/97	JM	10/02/97				

CUSTOMER DRAWING

POWER SNAP
PC BOARD THRU HOLE
40 AMP

A SD01206 SHT 1 OF 1 REV E