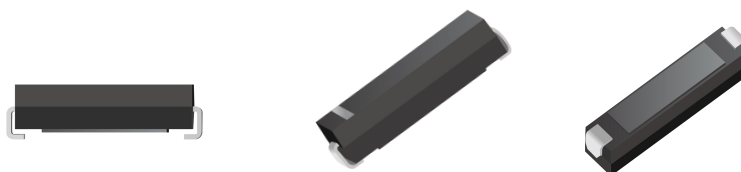




## FEATURES

- Fast reverse recovery time
- SMA Package
- Tj:-40°C~+120°C
- ROHS compliant



## Device Electrical Characteristics(Ta=25°C Unless otherwise noted)

Items	Symbol	Conditions	Value	Unit
Max. Repetitive Peak Reverse Voltage	$V_{RRM}$	$I_R=0.5\mu A$	15	KV
Average Forward Current max.	$I_{F(AV)}$	Ta=55°C	20	mA
Max. Forward Voltage Drop	$V_{FM}$	$I_F=I_{F(AV)}$	29	V
Max. Surge Current	$I_{FSM}$	10msec, half sine	2.0	A
Max. Reverse Current	$I_{RM1}$	$V_R=V_{RRM}$	0.5	$\mu A$
Max. High Temperature Reverse Current	$I_{RM2}$	Ta=100°C $V_R=V_{RRM}$	5	$\mu A$
Max. Reverse Recovery Time	trr	$I_F=20mA, I_R=40mA$ $I_{RR}=10mA$	80	nS
Max. Temperature Junction	$T_J$		120	°C
Storage Temperature Range	Tstg		-55to160	°C

## Mechanical Data

