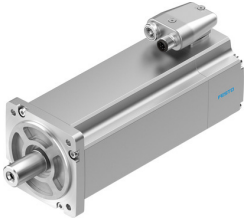


# Servo motor EMME-AS-80-S-LS-AMB

Part number: 2093107

FESTO



## Data sheet

Feature	Value
Number of pole pairs	3
Type code	EMME-AS
Rotor position sensor	Absolute encoder, multi-turn
Rotor position sensor interface	HIPERFACE®
Rotor position sensor measuring principle	Capacitive
Max. rotational speed	4690 1/min
Nominal rotary speed	3000 1/min
Brake DC operating voltage	24 V
Continuous stall current	3.1 A
Insulation protection class	F
Brake power consumption	12 W
Motor constants	0.923 Nm/A
Nominal operating voltage DC	360 V
Motor nominal power	750 W
DC nominal voltage	360 V
Motor nominal current	2.6 A
Typical rotor position sensor resolution	12 bit
Rotor position encoder, typical angular accuracy	20 arcmin
Rotor position encoder, sinusoidal/cosinusoidal periods per revolution	16
Phase-phase winding resistance	4.6 Ohm
Winding inductance phase-phase	9.46 mH
Type of winding switch	Star inside
Peak current	12.4 A
Voltage constant, phase-to-phase	54.3 mVmin
Rating class according to EN 60034-1	S1
CE marking (see declaration of conformity)	As per EU EMC directive As per EU low voltage directive
Corrosion resistance class (CRC)	0 - No corrosion stress
Storage temperature	-20 °C ... 70 °C
Relative air humidity	0 - 90 %
Degree of protection	IP21
Ambient temperature	-10 °C ... 40 °C
Certification	RCM compliance mark c UL us - Recognized (OL)
Total output inertia moment	1.68 kgcm <sup>2</sup>
Brake holding torque	4.5 Nm

Feature	Value
Brake mass moment of inertia	0.222 kgcm <sup>2</sup>
Nominal torque	2.4 Nm
Peak torque	11.2 Nm
Stall torque	2.8 Nm
Permissible axial shaft load	70 N
Permissible radial shaft load	350 N
MTTF, subcomponent	797 years, holding brake
MTTFd, subcomponent	271 years, rotor position sensor
Switching cycles, holding brake	5 million idle actuations (without friction work!)
Product weight	3700 g
Electrical connection technology	Plug
Note on materials	Contains paint-wetting impairment substances RoHS-compliant
Conforms to standard	IEC 60034