

2012 Size

1900/2100 MHz

Chip Multilayer Splitter/Combiner

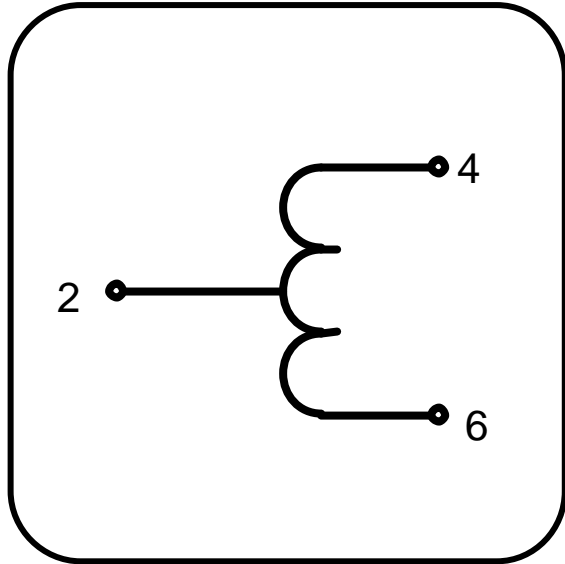
FSLH-S200C

All the technical data and information contained herein are subject to change without notice.

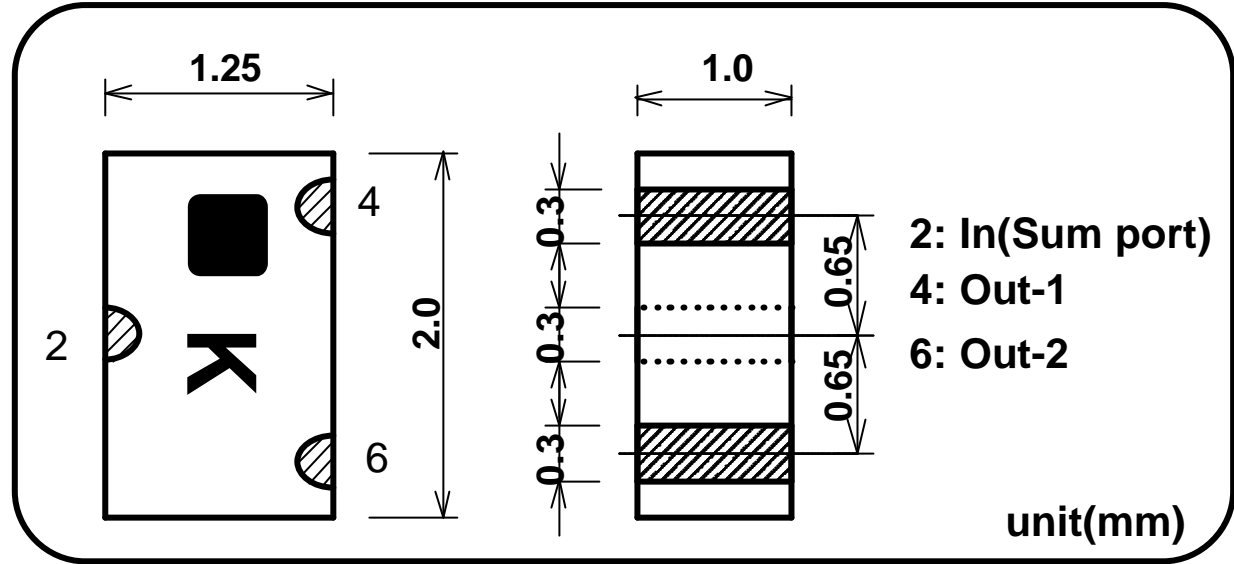


LH-FSLH-S200C-0406A

Equivalent Circuits



Shape & Size



Specifications

Part Name: FSLH-S200C

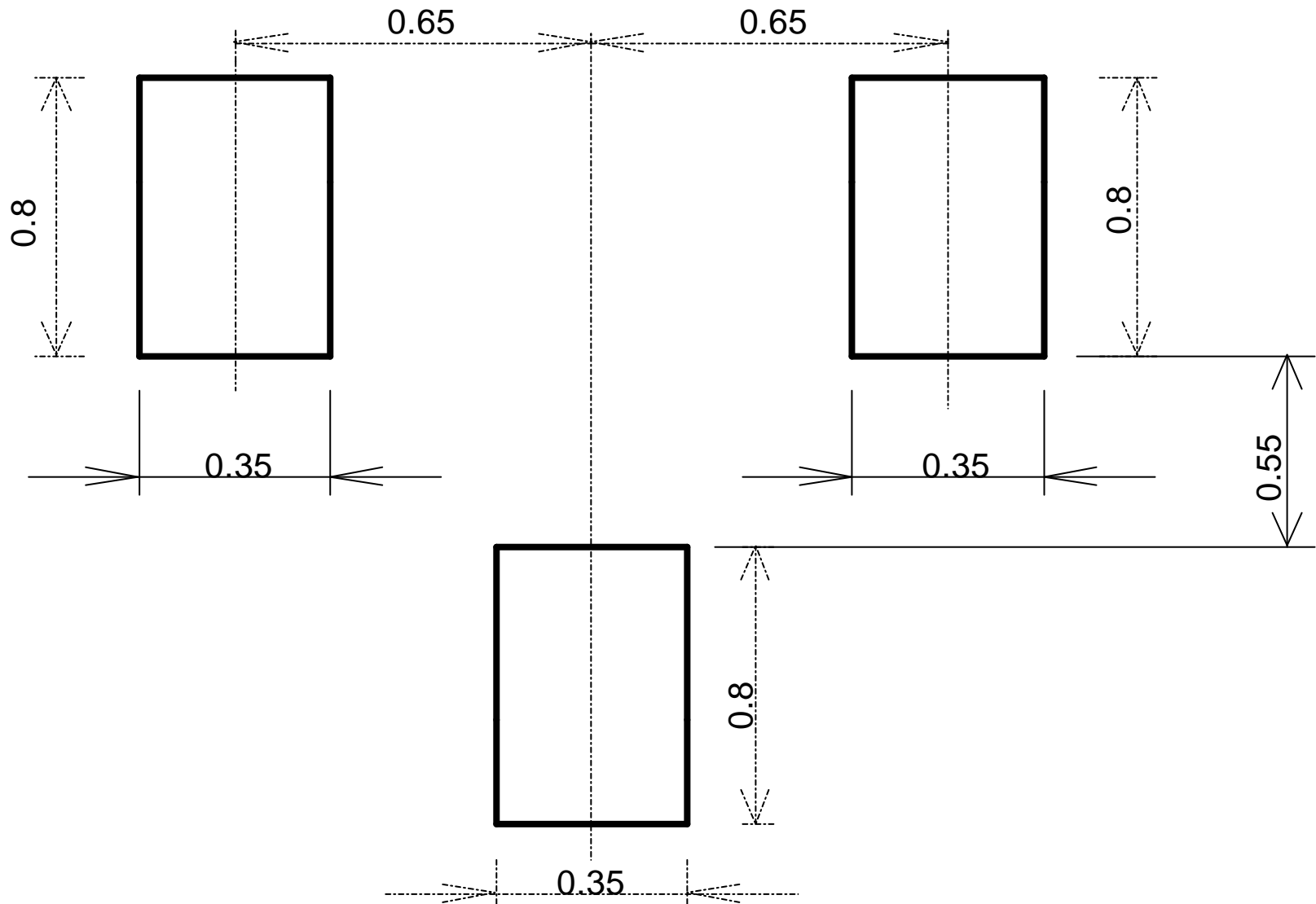
Frequency Range	Matching Capacitor	Insertion Loss *1	Isolation	Return Loss	Handling Power	Temperature Range
1900-2100MHz	1.0pF	1dB Max. (0.30dB Typ.)	12dB Min. (20dB Typ.)	10dB Min. (14dB Typ.)	1W Max. (CW)	-35 to +85 deg.C

*1 Not include splitting loss (3dB)

All the technical data and information contained herein are subject to change without notice.

LH-FSLH-S200C-0406A

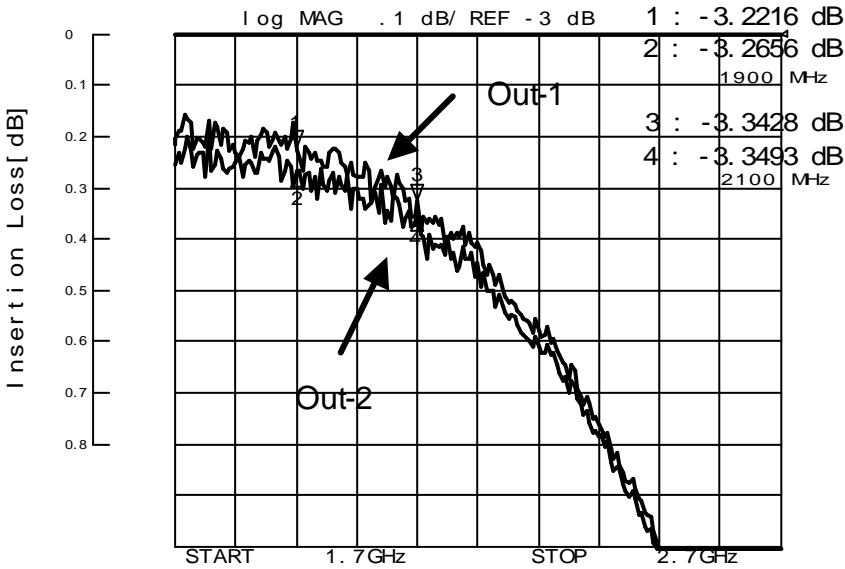
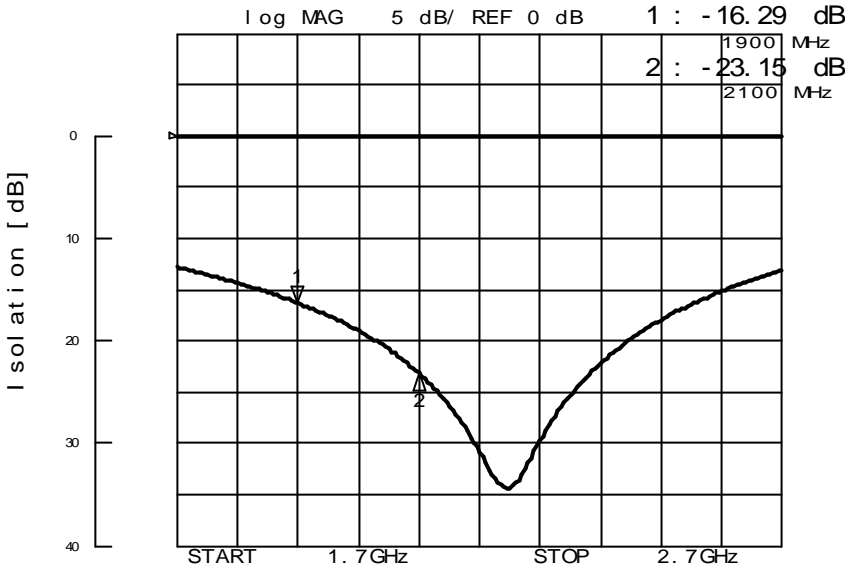
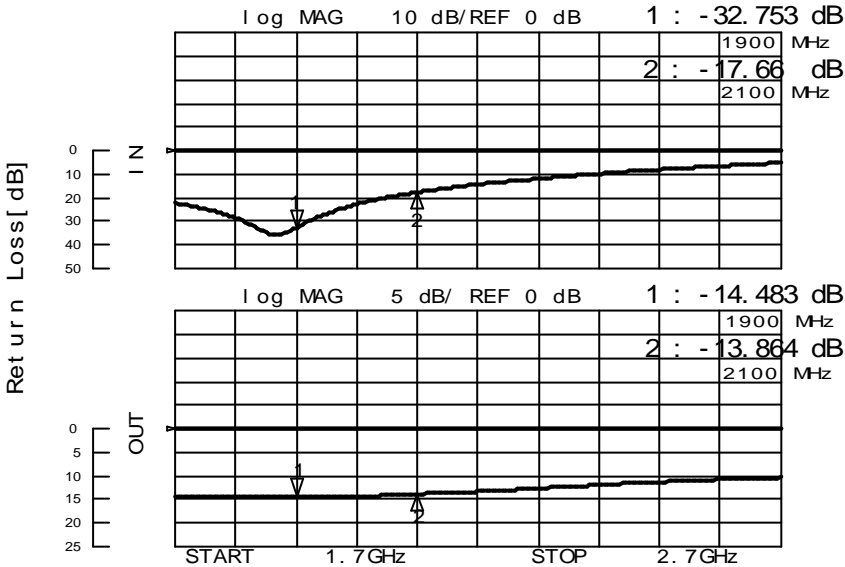
FOOT PATTERN



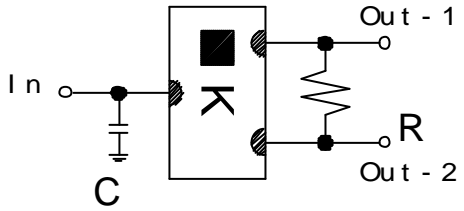
All the technical data and information contained herein are subject to change without notice.

LH-FSLH-S200C-0406A

FSLH-S200C Sample Data



1900/2100 MHz
 Chip Multilayer Splitter/Combiner "FSLH-S200C"



C:1.0pF
R:100 ohm

LH-FSLH-S200C-0406A