

**PLEASE CHECK WWW.MOLEX.COM FOR LATEST PART INFORMATION**

**Part Number:** [0010011114](#)  
**Status:** **Active**  
**Overview:** [kk](#)  
**Description:** 5.08mm (.200") Pitch KK® Crimp Terminal Housing, 11 Circuits

**Documents:**

[3D Model](#) [Product Specification PS-99020-0087 \(PDF\)](#)  
[Drawing \(PDF\)](#) [RoHS Certificate of Compliance \(PDF\)](#)

**General**

Product Family Crimp Housings  
 Series [3001](#)  
 Overview [kk](#)  
 Product Name KK®

**Physical**

Circuits (maximum) 11  
 Color - Resin Natural  
 Gender Female  
 Glow-Wire Compliant No  
 Material - Resin Nylon  
 Number of Rows 1  
 Packaging Type Bag  
 Panel Mount No  
 Pitch - Mating Interface (in) 0.200 In  
 Pitch - Mating Interface (mm) 5.08 mm  
 Temperature Range - Operating -40°C to +105°C

**Solder Process Data**

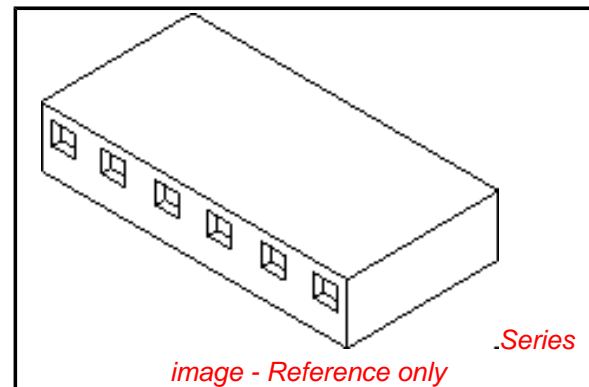
Lead-free Process Capability Wave Capable (TH only)

**Material Info**

Old Part Number 3001-11

**Reference - Drawing Numbers**

Product Specification PS-99020-0087  
 Sales Drawing SDE-3001-N\*



**EU RoHS**

**ELV and RoHS  
Compliant**  
**REACH SVHC**  
 Not Reviewed  
**Halogen-Free  
Status**  
 Not Reviewed

**China RoHS**



**Need more information on product  
environmental compliance?**

Email [productcompliance@molex.com](mailto:productcompliance@molex.com)  
 For a multiple part number RoHS Certificate of Compliance, [click here](#)

Please visit the [Contact Us](#) section for any non-product compliance questions.

**Search Parts in this Series**

[3001Series](#)

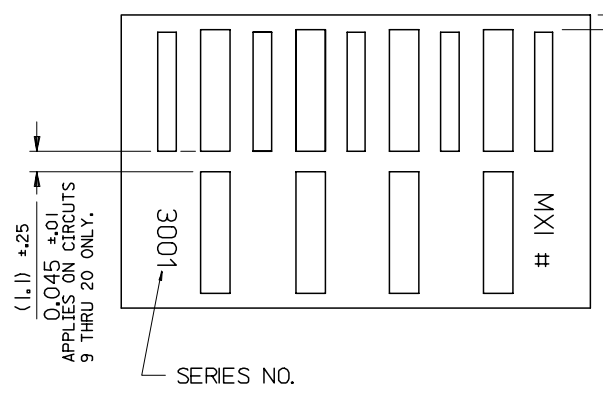
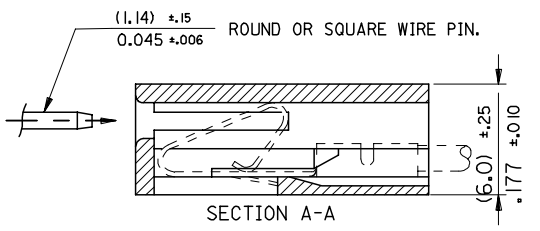
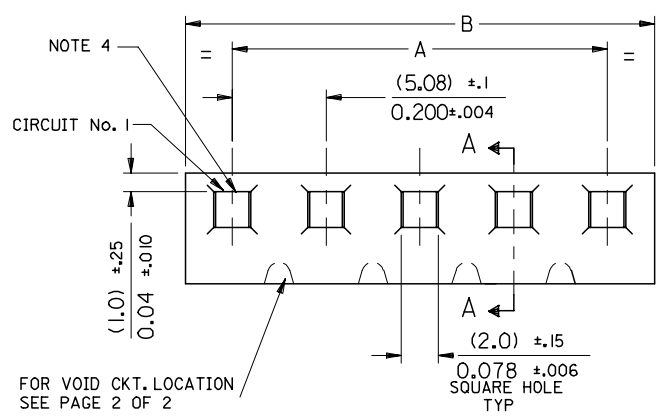
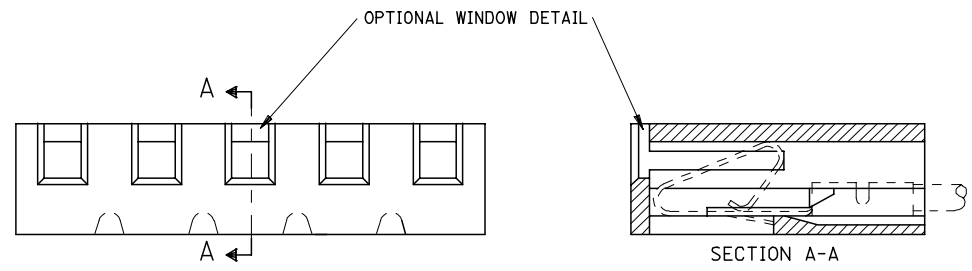
**Mates With**

[3061](#) , [3003](#) , [3008](#)

**Use With**

[2478](#) Crimp Terminals for 18-24 AWG, [2578](#)  
 Crimp Terminals for 22-26 AWG, [2878](#)

**NOTE :**  
 1. DIMENSIONS SHOWN MILLIMETERS  
 INCHES  
 2. FOR OTHER PRODUCT SPEC'S. SEE PSX 10-39.  
 3. THIS HOUSING USES KK TERM. No's. 2478, 2578 & 28



MAT'L: NYLON

CENTER RIB ONLY

10-01-1204	E-3001-20	3.800 ±.012	4.000 <sup>+0.006</sup> <sub>-0.016</sub>	96.52 ±0.3	101.60 <sup>+0.3</sup> <sub>-0.4</sub>
-1194	-19	3.600 ±.012	3.800 <sup>+0.006</sup> <sub>-0.016</sub>	91.44 ±0.3	96.52 <sup>+0.3</sup> <sub>-0.4</sub>
-1184	-18	3.400 ±.012	3.600 <sup>+0.006</sup> <sub>-0.016</sub>	86.36 ±0.3	91.44 <sup>+0.3</sup> <sub>-0.4</sub>
-1174	-17	3.200 ±.012	3.400 <sup>+0.006</sup> <sub>-0.016</sub>	81.28 ±0.3	86.36 <sup>+0.3</sup> <sub>-0.4</sub>
-1164	-16	3.000 ±.010	3.200 <sup>+0.006</sup> <sub>-0.016</sub>	76.20 ±0.25	81.28 <sup>+0.3</sup> <sub>-0.4</sub>
-1154	-15	2.800 ±.010	3.000 <sup>+0.006</sup> <sub>-0.016</sub>	71.12 ±0.25	76.20 <sup>+0.3</sup> <sub>-0.4</sub>
-1144	-14	2.600 ±.010	2.800 <sup>+0.006</sup> <sub>-0.016</sub>	66.04 ±0.25	71.12 <sup>+0.3</sup> <sub>-0.4</sub>
-1134	-13	2.400 ±.010	2.600 <sup>+0.006</sup> <sub>-0.016</sub>	60.96 ±0.25	66.04 <sup>+0.3</sup> <sub>-0.4</sub>
-1124	-12	2.200 ±.010	2.400 <sup>+0.006</sup> <sub>-0.016</sub>	55.88 ±0.25	60.96 <sup>+0.3</sup> <sub>-0.4</sub>
-1114	-11	2.000 ±.008	2.200 <sup>+0.006</sup> <sub>-0.012</sub>	50.80 ±0.20	55.88 <sup>+0.3</sup> <sub>-0.4</sub>
-1104	-10	1.800 ±.008	2.000 <sup>+0.006</sup> <sub>-0.008</sub>	45.72 ±0.20	50.80 <sup>+0.3</sup> <sub>-0.4</sub>
-1094	-9	1.600 ±.008	1.800 <sup>+0.006</sup> <sub>-0.008</sub>	40.64 ±0.20	45.72 <sup>+0.3</sup> <sub>-0.4</sub>
-1084	-8	1.400 ±.008	1.600 <sup>+0.006</sup> <sub>-0.008</sub>	35.56 ±0.20	40.64 <sup>+0.3</sup> <sub>-0.4</sub>
-1074	-7	1.200 ±.008	1.400 <sup>+0.006</sup> <sub>-0.008</sub>	30.48 ±0.20	35.56 <sup>+0.3</sup> <sub>-0.4</sub>
-1064	-6	1.000 ±.004	1.200 <sup>+0.006</sup> <sub>-0.008</sub>	25.40 ±0.10	30.48 <sup>+0.3</sup> <sub>-0.4</sub>
-1054	-5	.800 ±.004	1.000 <sup>+0.006</sup> <sub>-0.006</sub>	20.32 ±0.10	25.40 <sup>+0.3</sup> <sub>-0.4</sub>
-1044	-4	.600 ±.004	.800 <sup>+0.006</sup> <sub>-0.006</sub>	15.24 ±0.10	20.32 <sup>+0.3</sup> <sub>-0.4</sub>
-1034	-3	.400 ±.004	.600 <sup>+0.006</sup> <sub>-0.006</sub>	10.16 ±0.10	15.24 <sup>+0.3</sup> <sub>-0.4</sub>
-1024	-2	.200 ±.004	.400 <sup>+0.006</sup> <sub>-0.006</sub>	5.08 ±0.10	10.16 <sup>+0.3</sup> <sub>-0.4</sub>
10-01-1014	E-3001-1		.200 <sup>+0.006</sup> <sub>-0.006</sub>		5.08 <sup>+0.3</sup> <sub>-0.4</sub>
PART No.	ENG. No.	ENGLISH		METRIC	
		A	B	A	B

**CORRECT TEXT LOC**  
 EC NO: E2007-0720  
 DRWN: DWASZKI EMI CZ 2007/03/28  
 CHKD: D. MOR ARTY 2007/03/29  
 APPR: DENNEHY 2007/04/04

**QUALITY SYMBOLS**  
 ▽=0  
 ▽=0

**GENERAL TOLERANCES (UNLESS SPECIFIED)**

	mm	INCH
4 PLACES	±.005	±.0002
3 PLACES	±.005	±.010
2 PLACES	±0.25	±.014
1 PLACE	±0.35	±.014

ANGULAR ±1/2°

**DIMENSION STYLE**  
 MM/IN

**SCALE**  
 7:1

**DESIGN UNITS**  
 METRIC

**THIRD ANGLE PROJECTION**

**DRAWN BY** P. MOORE **DATE** 1998/09/15  
**CHECKED BY** MGOONEY **DATE** 1999/03/12  
**APPROVED BY** MWILHITE **DATE** 1999/03/12

**TITLE** 5.08MM KK CRP TERM HSG

**MATERIAL NO.** SEE CHART **DOCUMENT NO.** SDE-3001-N-\* **SHEET NO.** 1 OF 1

**DRAFT WHERE APPLICABLE MUST REMAIN WITHIN DIMENSIONS**

**SIZE** A3

**THIS DRAWING CONTAINS INFORMATION THAT IS PROPRIETARY TO MOLEX INCORPORATED AND SHOULD NOT BE USED WITHOUT WRITTEN PERMISSION**

