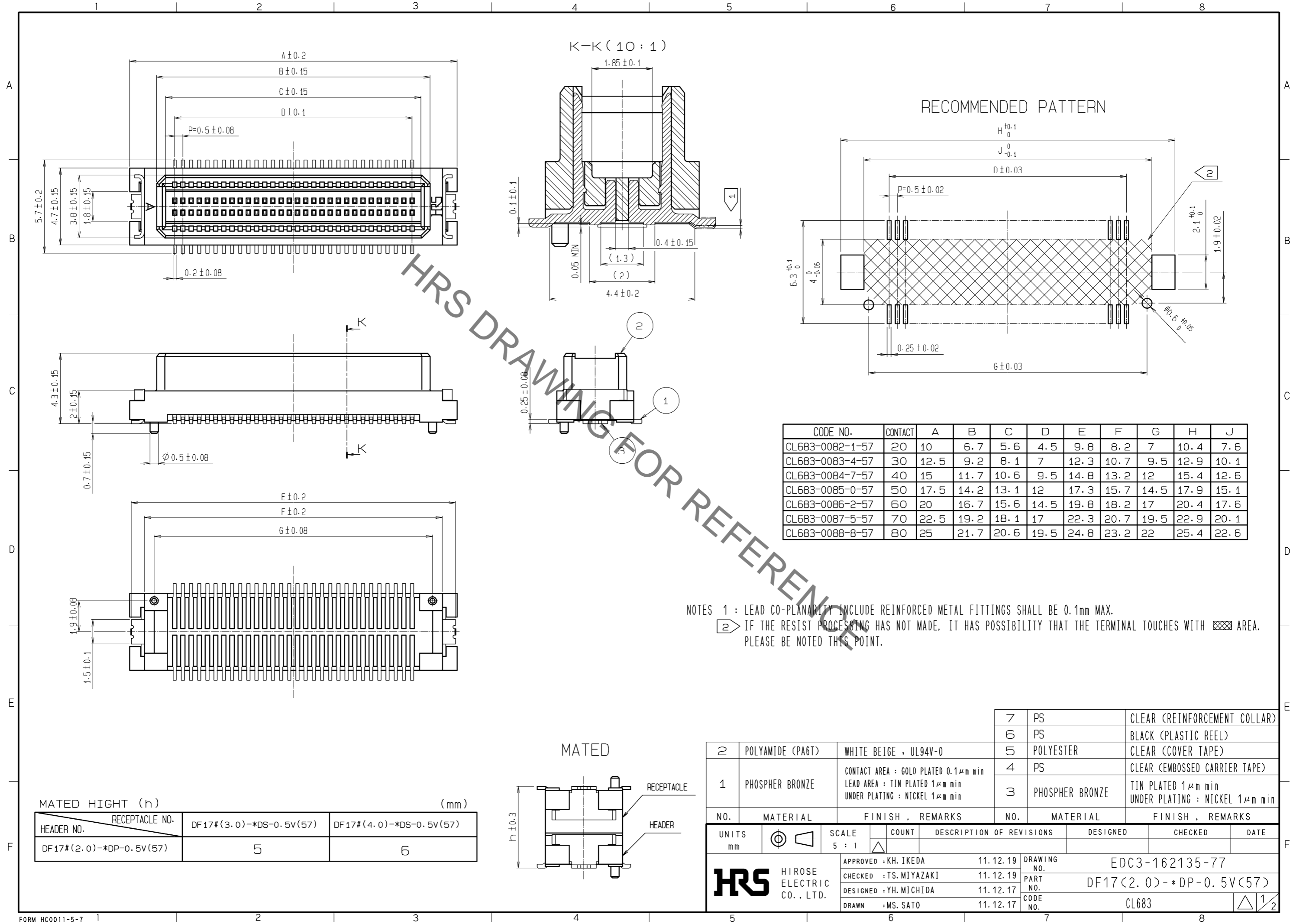


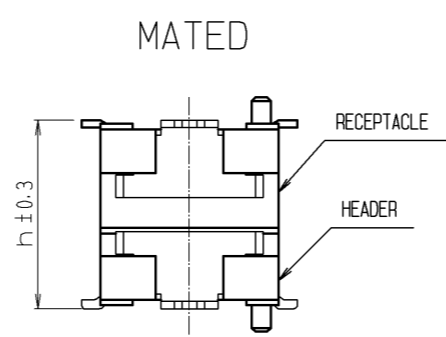
Apr.1.2020 Copyright 2020 HIROSE ELECTRIC CO., LTD. All Rights Reserved.  
In case of consideration for using Automotive equipment / device which demand high reliability, kindly contact our sales window correspondents.



NOTES 1 : LEAD CO-PLANARITY INCLUDE REINFORCED METAL FITTINGS SHALL BE 0.1mm MAX.  
 2 IF THE RESIST PROCESSING HAS NOT MADE, IT HAS POSSIBILITY THAT THE TERMINAL TOUCHES WITH AREA. PLEASE BE NOTED THIS POINT.

MATED HIGHT (h) (mm)

| HEADER NO.              | RECEPTACLE NO. | DF17#(3.0)-*DS-0.5V(57) | DF17#(4.0)-*DS-0.5V(57) |
|-------------------------|----------------|-------------------------|-------------------------|
| DF17#(2.0)-*DP-0.5V(57) | 5              | 6                       |                         |



| NO. | MATERIAL         | FINISH . REMARKS   | NO. | MATERIAL        | FINISH . REMARKS                                     |
|-----|------------------|--|-----|-----------------|--|
| 2   | POLYAMIDE (PA6T) | WHITE BEIGE , UL94V-0  | 7   | PS              | CLEAR (REINFORCEMENT COLLAR)                         |
| 1   | PHOSPHER BRONZE  | CONTACT AREA : GOLD PLATED 0.1μm min<br>LEAD AREA : TIN PLATED 1μm min<br>UNDER PLATING : NICKEL 1μm min | 6   | PS              | BLACK (PLASTIC REEL)                                 |
|     |                  |  | 5   | POLYESTER       | CLEAR (COVER TAPE)                                   |
|     |                  |  | 4   | PS              | CLEAR (EMBOSSED CARRIER TAPE)                        |
|     |                  |  | 3   | PHOSPHER BRONZE | TIN PLATED 1μm min<br>UNDER PLATING : NICKEL 1μm min |

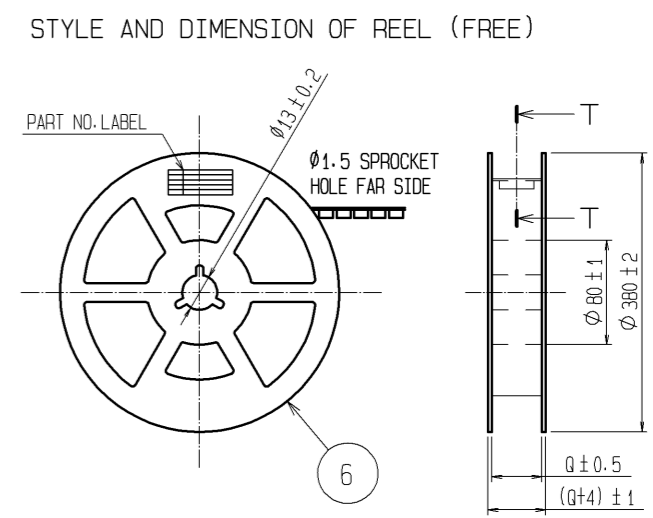
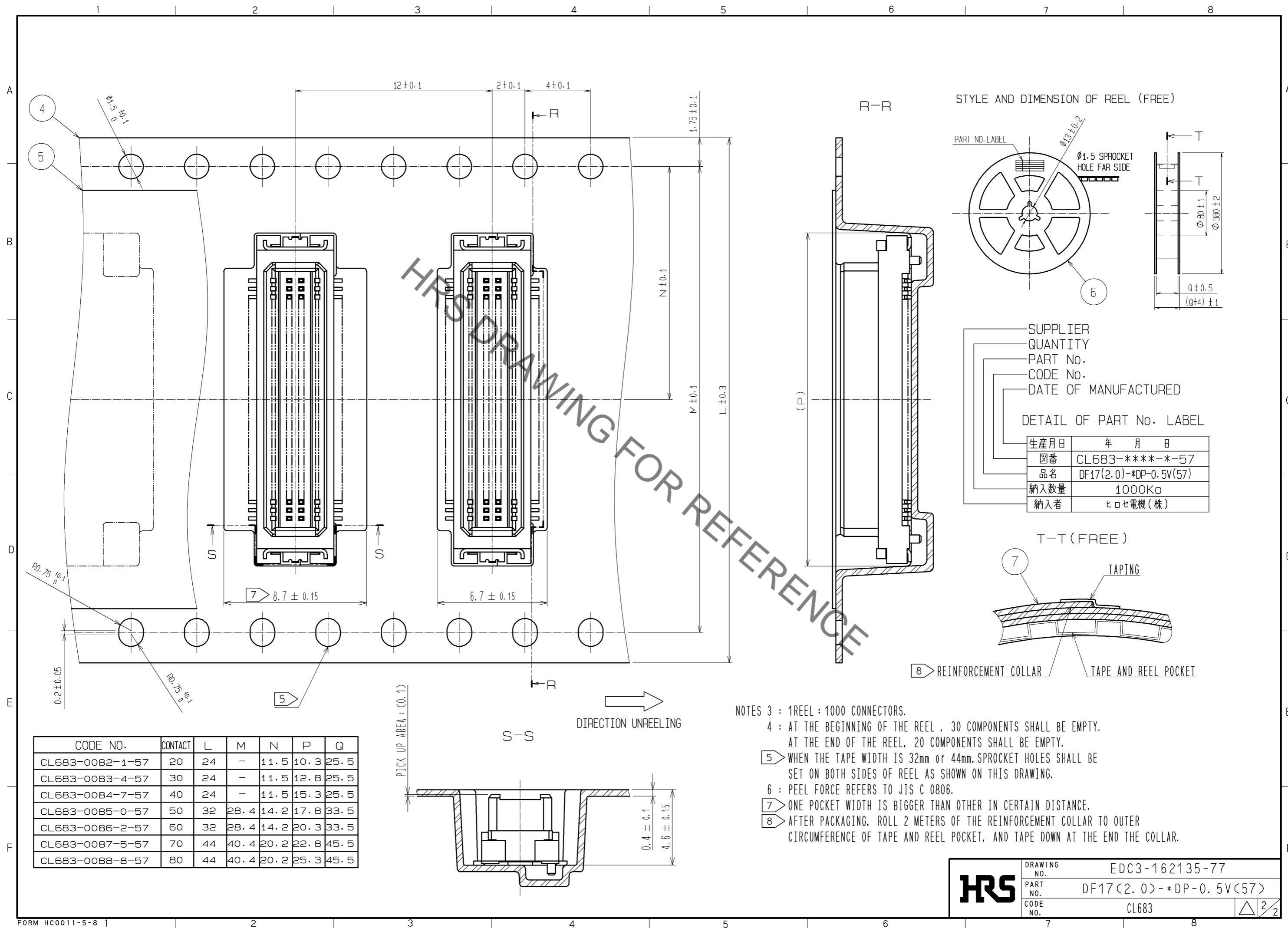
  

| UNITS | SCALE | COUNT | DESCRIPTION OF REVISIONS   | DESIGNED | CHECKED | DATE |
|-------|-------|-------|--|----------|---------|------|
| mm    | 5 : 1 | △     | APPROVED : KH. IKEDA 11.12.19<br>CHECKED : TS. MIYAZAKI 11.12.19<br>DESIGNED : YH. MICHIDA 11.12.17<br>DRAWN : MS. SATO 11.12.17 |          |         |      |

| DRAWING NO.    | PART NO.               | CODE NO. |
|----------------|------------------------|----------|
| EDC3-162135-77 | DF17(2.0)-*DP-0.5V(57) | CL683    |

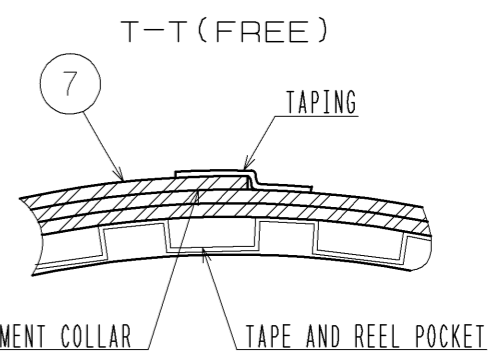
Apr.1.2020 Copyright 2020 HIROSE ELECTRIC CO., LTD. All Rights Reserved.  
In case of consideration for using Automotive equipment / device which demand high reliability, kindly contact our sales window correspondents.



SUPPLIER  
QUANTITY  
PART No.  
CODE No.  
DATE OF MANUFACTURED

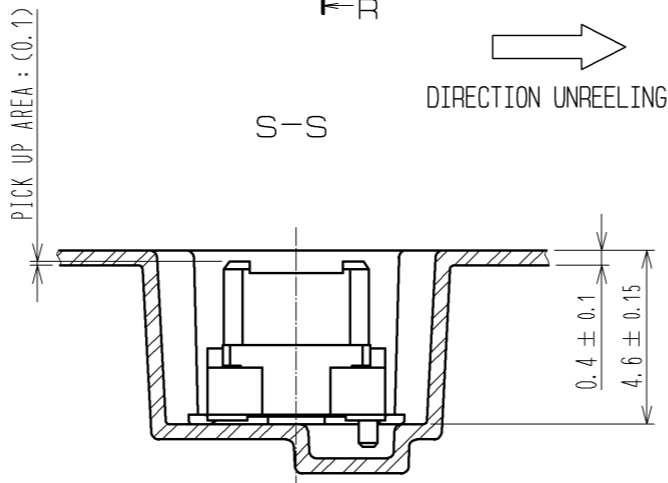
DETAIL OF PART No. LABEL

|      |                        |
|------|------------------------|
| 生産月日 | 年 月 日                  |
| 図番   | CL683-****-*-57        |
| 品名   | DF17(2.0)-*DP-0.5V(57) |
| 納入数量 | 1000K $\phi$           |
| 納入者  | ヒロセ電機(株)               |



- NOTES 3 : 1REEL : 1000 CONNECTORS.  
4 : AT THE BEGINNING OF THE REEL , 30 COMPONENTS SHALL BE EMPTY.  
AT THE END OF THE REEL, 20 COMPONENTS SHALL BE EMPTY.  
5 WHEN THE TAPE WIDTH IS 32mm or 44mm, SPROCKET HOLES SHALL BE SET ON BOTH SIDES OF REEL AS SHOWN ON THIS DRAWING.  
6 : PEEL FORCE REFERS TO JIS C 0806.  
7 ONE POCKET WIDTH IS BIGGER THAN OTHER IN CERTAIN DISTANCE.  
8 AFTER PACKAGING, ROLL 2 METERS OF THE REINFORCEMENT COLLAR TO OUTER CIRCUMFERENCE OF TAPE AND REEL POCKET, AND TAPE DOWN AT THE END THE COLLAR.

| CODE NO.        | CONTACT | L  | M    | N    | P    | Q    |
|-----------------|---------|----|------|------|------|------|
| CL683-0082-1-57 | 20      | 24 | -    | 11.5 | 10.3 | 25.5 |
| CL683-0083-4-57 | 30      | 24 | -    | 11.5 | 12.8 | 25.5 |
| CL683-0084-7-57 | 40      | 24 | -    | 11.5 | 15.3 | 25.5 |
| CL683-0085-0-57 | 50      | 32 | 28.4 | 14.2 | 17.8 | 33.5 |
| CL683-0086-2-57 | 60      | 32 | 28.4 | 14.2 | 20.3 | 33.5 |
| CL683-0087-5-57 | 70      | 44 | 40.4 | 20.2 | 22.8 | 45.5 |
| CL683-0088-8-57 | 80      | 44 | 40.4 | 20.2 | 25.3 | 45.5 |



**HRS**

|             |                        |
|-------------|------------------------|
| DRAWING NO. | EDC3-162135-77         |
| PART NO.    | DF17(2.0)-*DP-0.5V(57) |
| CODE NO.    | CL683                  |

2/2