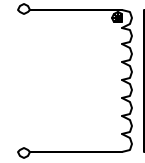


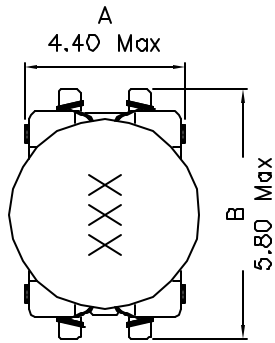
## XFCMD4D13-XXX SERIES INDUCTORS

- TRUE SURFACE MOUNT DESIGN
- TAPE & REEL PACKAGING STANDARD, 5000 PCS PER 13" REEL
- CUSTOM DESIGNS AVAILABLE AT NO EXTRA CHARGE
- ECONOMICAL LOW COST SOLUTION FOR ALL OF YOUR POWER NEEDS
- Flamability Rating: UL94V-0

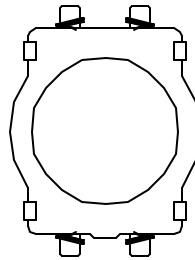
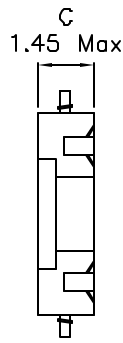
Schematic:



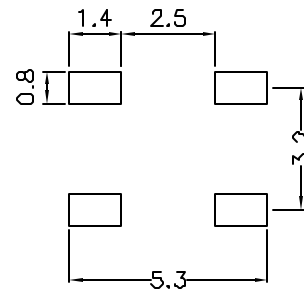
### Mechanical Dimensions:



TOP VIEW



BOTTOM VIEW



(SUGGESTED MOUNTING PAD)

UNLESS OTHERWISE SPECIFIED  
 TOLERANCES:  
 .xx ±0.25  
 Dimensions in MM

| PART NUMBER   | INDUCTANCE <sup>1</sup><br>( $\mu\text{H}$ ±20%) | DCR Max (Ohms)<br>/ Rated D.C Current (A) |
|---------------|--|---|
| XFCMD4D13-2R2 | 2.2  |   |
| XFCMD4D13-3R3 | 3.3  | 0.160 (0.123) / 0.85                      |
| XFCMD4D13-4R7 | 4.7  | 0.194 (0.149) / 0.80                      |
| XFCMD4D13-6R8 | 6.8  | 0.276 (0.212) / 0.65                      |
| XFCMD4D13-100 | 10   | 0.335 (0.258) / 0.57                      |
| XFCMD4D13-120 | 12   |   |
| XFCMD4D13-150 | 15   | 0.508 (0.391) / 0.45                      |
| XFCMD4D13-180 | 15   |   |
| XFCMD4D13-220 | 22   | 0.766 (0.589) / 0.37                      |
| XFCMD4D13-270 | 27   |   |
| XFCMD4D13-330 | 33   | 1.162 (0.894) / 0.28                      |
| XFCMD4D13-390 | 39   |   |
| XFCMD4D13-470 | 47   | 1.658 (1.326) / 0.22                      |
| XFCMD4D13-560 | 56   |   |
| XFCMD4D13-680 | 68   | 2.534 (2.027) / 0.18                      |
| XFCMD4D13-820 | 82   |   |
| XFCMD4D13-101 | 100  | 3.304 (2.643) / 0.17                      |

For environmental data see "Product Specifications"

1. Tested @ 100KHz, 0.1 Vrms.
2. Inductance drop=10% typ. at rated Isat.
3.  $\Delta T=40^{\circ}\text{C}$  rise typ. at Irms.
4. Operating temperature range  $-40^{\circ}\text{C}$  to  $+85^{\circ}\text{C}$ .
5. Electrical Specifications at  $25^{\circ}\text{C}$ .