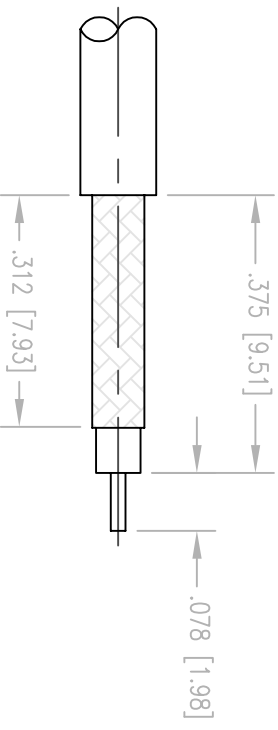
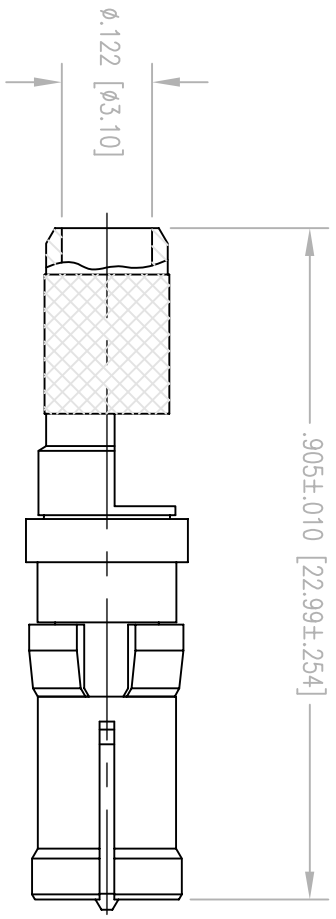
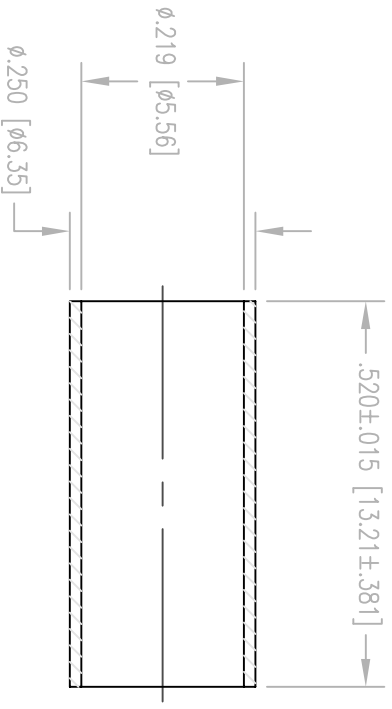


REV.	DESCRIPTION	DATE	BY	APPD.
D	ECR 7248	2/7/02	JWH	



CABLE TRIMMING DIMENSIONS

NOTES:

1. MATERIALS:

- FRONT BODY: BERYLLIUM COPPER PER ASTM B196
- INSULATOR: TEFLON PER ASTM D1710
- CLIP RING: BERYLLIUM COPPER PER ASTM B194
- ALL OTHER METAL PARTS: BRASS PER ASTM B16

2. FINISH:

- BODY AND CONTACT: .000030 MIN. GOLD PER MIL-G-45204 OVER  
.000050 MIN. NICKEL PER QQ-N-290
- CLIP RING: .000100 MIN. NICKEL PER QQ-N-290 OVER  
COPPER FLASH
- FERRULE: .000005 MIN. GOLD PER MIL-G-45204 OVER  
.000050 MIN. NICKEL PER QQ-N-290

- 3. FOR USE WITH RG-142 CABLE OR EQUIVALENT
- 4. FOR CABLING PROCEDURE USE CAP 9-01 WITH TRIMMING DIMENSIONS SHOWN.
- 5. CRIMP FERRULE USING A .213 HEX DIE.

PER ASME Y14.5M-1994 UNLESS OTHERWISE SPECIFIED: DIMENSIONS ARE IN INCHES (MM) DECIMALS .xx ± .01 [0.254] FRACTIONS .xxx ± .005 [0.127] ANGLES 3°		SCALE: 4:1	
CUSTOMER DRAWING		TITLE	
APPROVED DATE 2/7/02		APPROVED DATE	
DRAWN JWH	CHECKED	DATE	DATE
APPROVED DATE 2/7/02		APPROVED DATE	
A		RDM STRAIGHT RECEPTACLE	
201-910-1161G		SMT: 1	OF 1
D		REV. D	

**NORTHROP GRUMMAN**  
 Winchester Electronics  
 400 Park Road  
 Watertown, CT 06795