

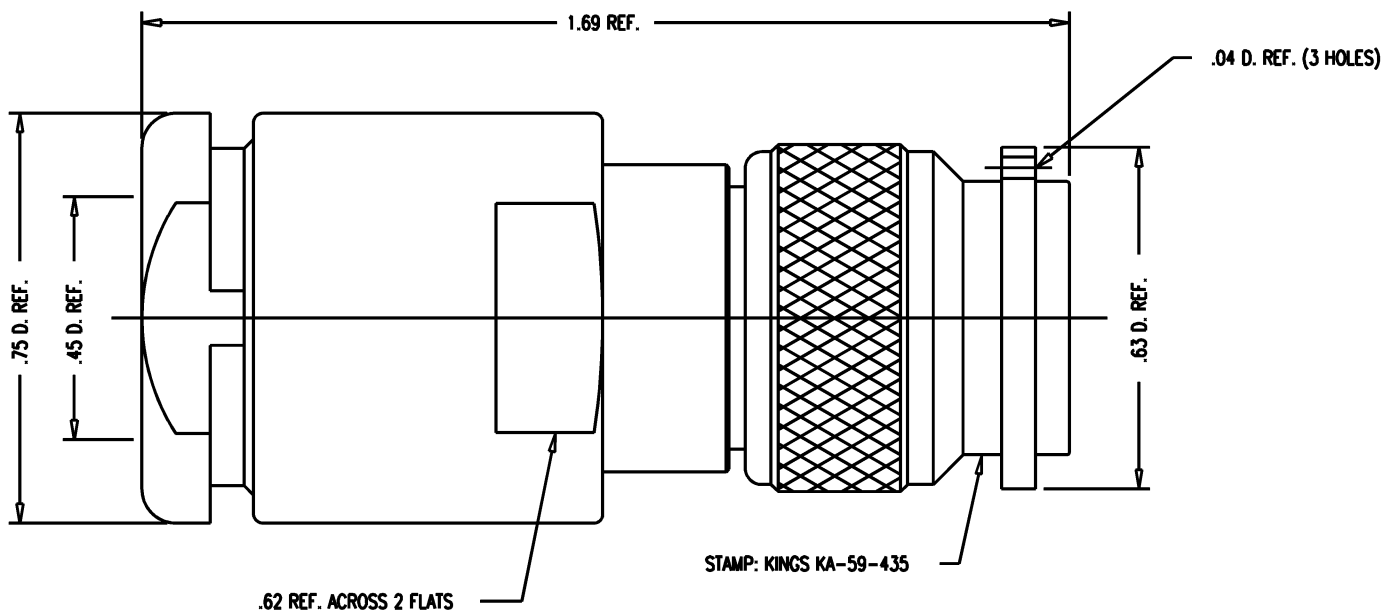
DASH NO.	M CODE	MADE FROM
----------	--------	-----------

GSD

KA-59-435

REVISIONS

ISSUE	CHANGES
1	CN 37201 A REDRAWN KH 11/25/96



NOTES:

- FOR USE WITH RG-214, 225, 393 & 9/U CABLE.
- FOR CABLING INSTRUCTIONS SEE CP-230A.
- FOR CRIMPING USE DIE KTH-2004
- INTERFACE PER MIL-STD-348, FIG. 313-1.
- MARKING PACKAGE: 30-085-3
KINGS KA-59-435
XXXX (DATE CODE)
- MATERIALS:
INSULATORS: TEFLON, ASTM-D-4894
K-GRIP SLEEVE: COMMERCIAL BRONZE, ASTM-B-135
GASKETS: SILICONE RUBBER, ZZ-R-765
OUTER CONTACT: BER. COP., ASTM-B-196
ALL OTHER PARTS: BRASS, ASTM-B16
- FINISHES:
CENTER CONTACT: GOLD PLATE PER MIL-G-45204
ALL OTHER METAL PARTS: KINGS TARNISH RESISTANT NICKEL FINISH (TR-5)
- ELECTRICAL CHARACTERISTICS:
NOMINAL IMPEDANCE: 50 OHMS
VOLTAGE RATING: 500 VRMS
FREQUENCY RANGE: DC TO 11 GHz

KAM6875

SCALE	4:1	
APPROX SURFACE AREA		
USED ON		
REF:	BELL HELICOPTER 30-083-3 REV. J	
PLUG, TNC		
DRAWN	KH	11/25/96
DESIGN	PB	11/26/96
APPR.		DATE
 KINGS ELECTRONICS CO., INC. TUCKAHOE, NEW YORK 10707		
KA-59-435		

GSD