



TAI-SAW TECHNOLOGY CO., LTD.

No. 3, Industrial 2nd Rd., Ping-Chen Industrial District,
Taoyuan, 324, Taiwan, R.O.C.

TEL: 886-3-4690038 FAX: 886-3-4697532

E-mail: tstsales@mail.taisaw.com Web: www.taisaw.com

Approval Sheet For Product Specification

Issued Date:

Product Name: SAW Filter 915MHz SMD 3.8×3.8mm

TST Parts No.: TA0598A

Customer Parts No.: _____

| |
|---------------------|
| Company: _____ |
| Division: _____ |
| Approved by : _____ |
| Date: _____ |

Checked by: _____ Asin Lin

Approval by: _____ Francis Chen

Date: _____ 2006/09/01



TAI-SAW TECHNOLOGY CO., LTD.

No. 3, Industrial 2nd Rd., Ping-Chen Industrial District,
Taoyuan, 324, Taiwan, R.O.C.

TEL: 886-3-4690038 FAX: 886-3-4697532

E-mail: tstsales@mail.taisaw.com Web: www.taisaw.com

SAW Filter 915 MHz

MODEL NO.: TA0598A

REV. NO.:1

A. MAXIMUM RATING:

1. Input Power Level: 15 dB_m
2. DC voltage: 5 V
3. Operating Temperature: -40°C to 85°C
4. Storage Temperature: -40°C to +85°C

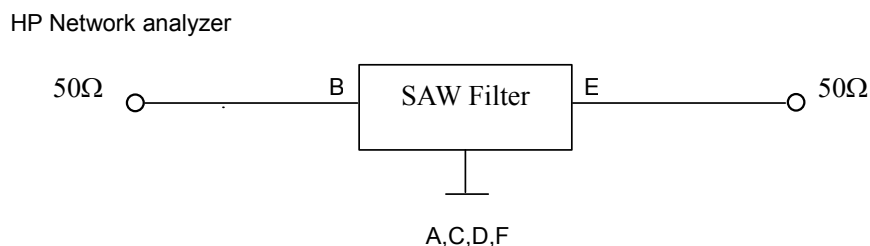
RoHS Compliant
Lead free
Lead-free soldering

B. CHARACTERISTICS:

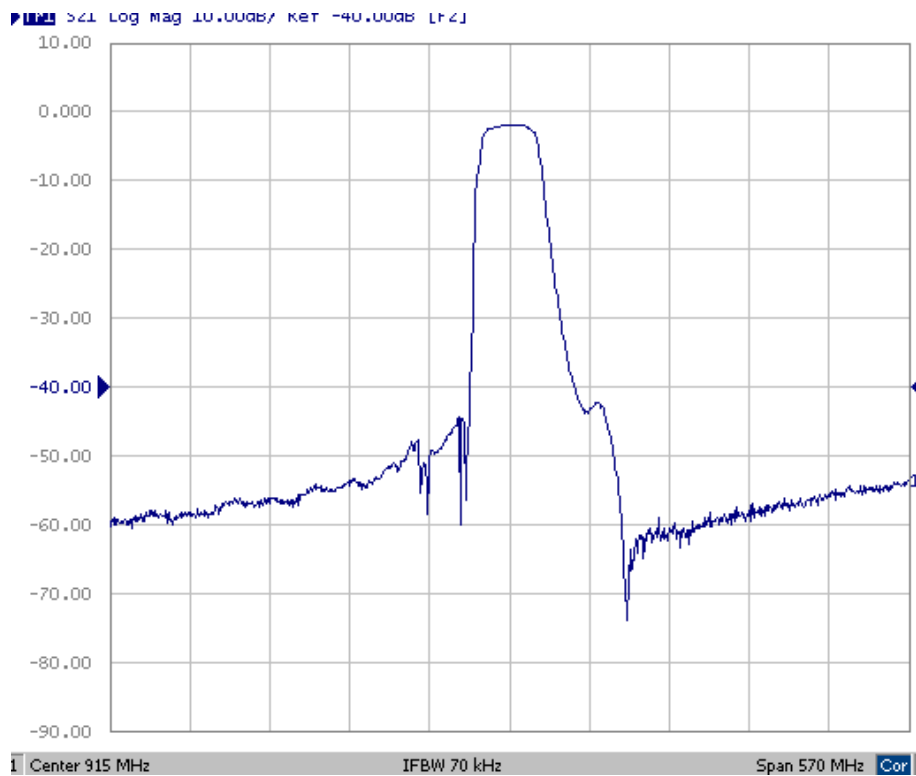
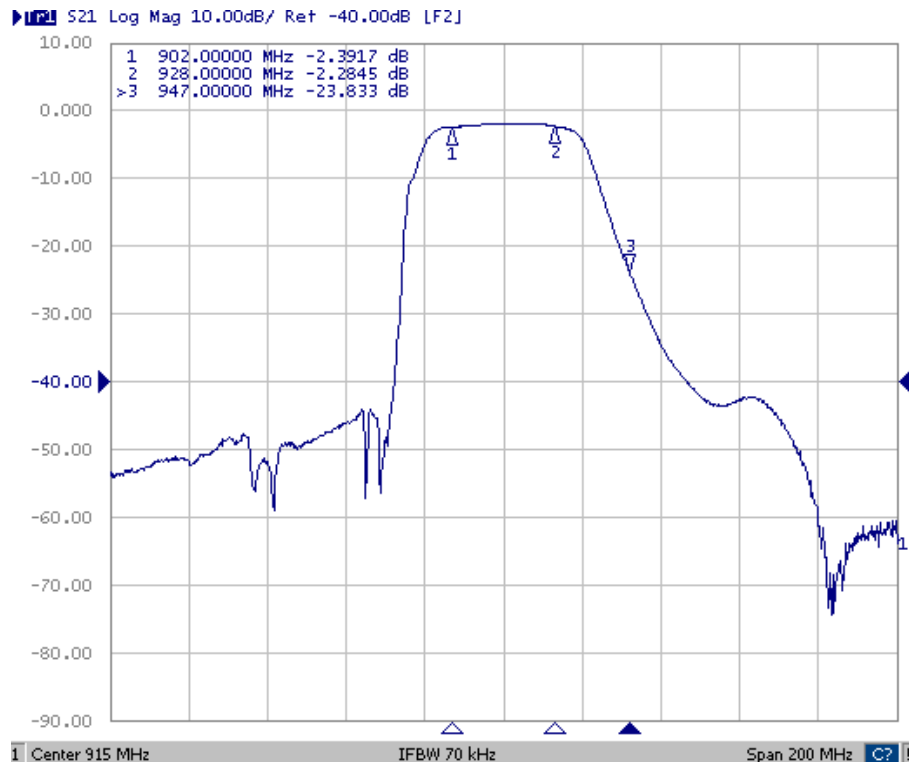
| Item | | | Min. | Typ. | Max. |
|--|-------------------|---------|------|------|------|
| Center frequency | Fc | MHz | - | 915 | - |
| Insertion loss | 902.0 ~ 928.0 MHz | IL (dB) | - | 2.5 | 3.3 |
| Amplitude ripple | 902.0 ~ 928.0 MHz | (dB) | - | 0.5 | 1.5 |
| Attenuation (Reference level from 0dB) | | | | | |
| | 10 ~ 800 MHz | (dB) | 45 | 54 | - |
| | 800 ~ 845 MHz | (dB) | 40 | 47 | - |
| | 845 ~ 880 MHz | (dB) | 35 | 45 | - |
| | 947 ~ 992 MHz | (dB) | 15 | 23 | - |
| | 992 ~ 1020 MHz | (dB) | 35 | 45 | - |
| | 1020 ~ 1200 MHz | (dB) | 45 | 52 | - |
| Source impedance | Zs | (Ω) | - | 50 | - |
| Load impedance | ZL | (Ω) | - | 50 | - |

Note1. No matching network required for operation at 50Ω

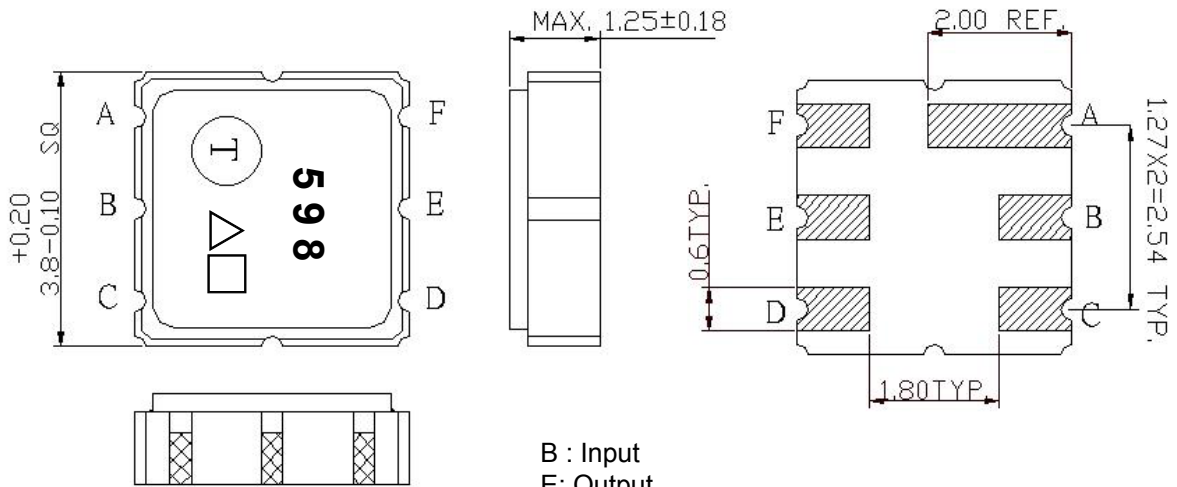
C. MEASUREMENT CIRCUIT:



D. TRANSFER FUNCTION :



E.OUTLINE DRAWING:

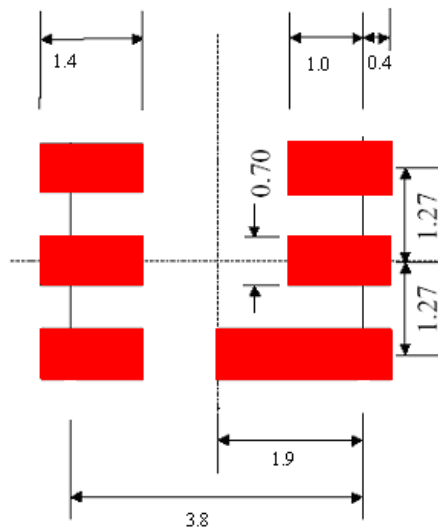


B : Input
 E: Output
 A,C,D,F Ground
 △:Year Code
 □: Date Code(Follow the table provided by planner each year.)
 Unit: mm

△ Product Year Code

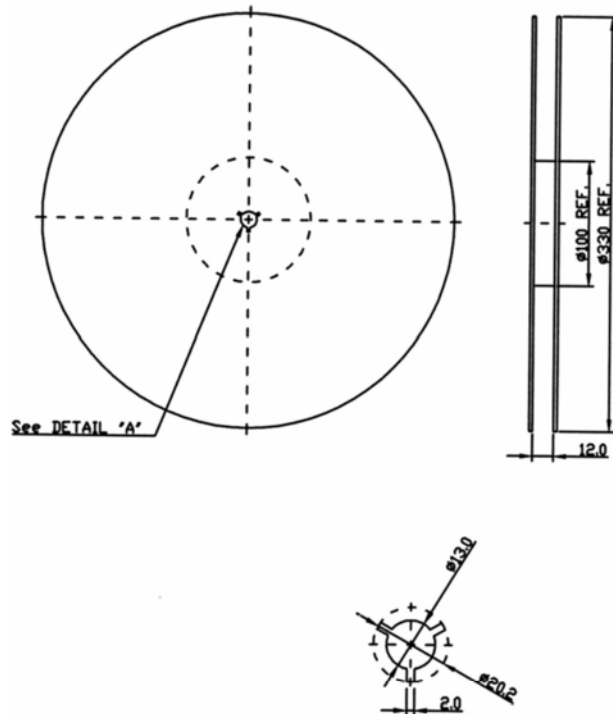
| | | |
|--------------|------|------|
| Year | 2005 | 2006 |
| | 2007 | 2008 |
| | 2009 | 2010 |
| Product Code | A | a |

F.PCB FOOTPRINT:

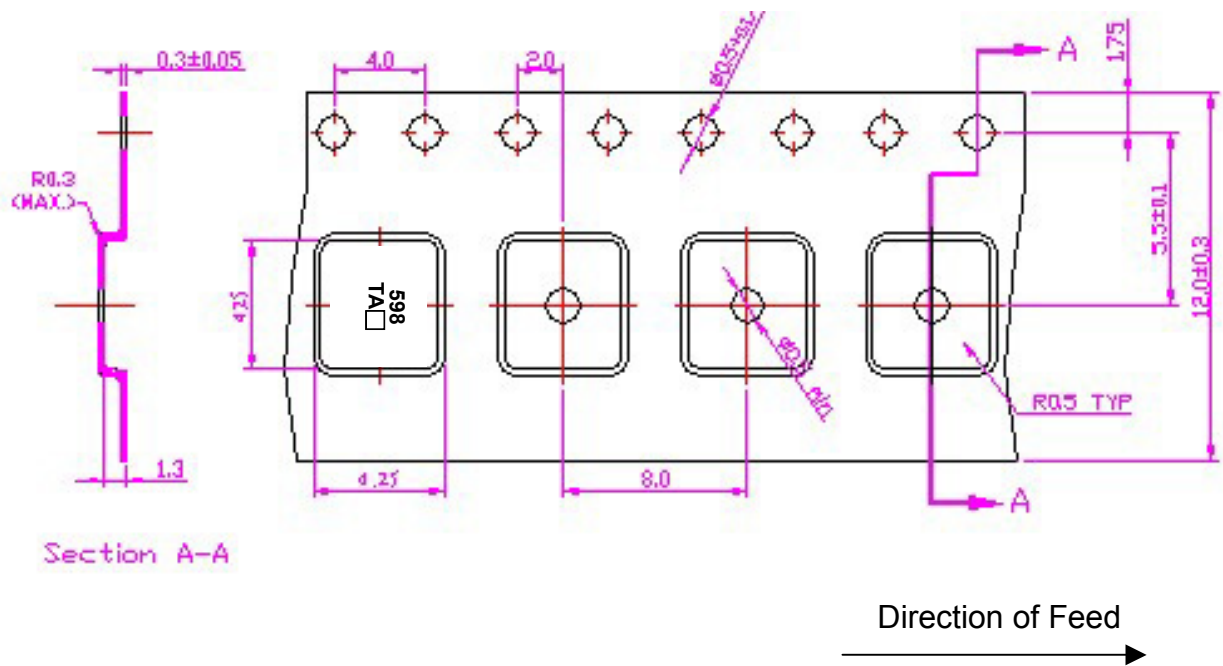


G. PACKING:

1. REEL DIMENSION



2. TAPE DIMENSION



H. REFLOW PROFILE

