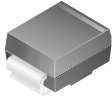


RoHS Compliant Product

A suffix of "-C" specifies halogen & lead-free



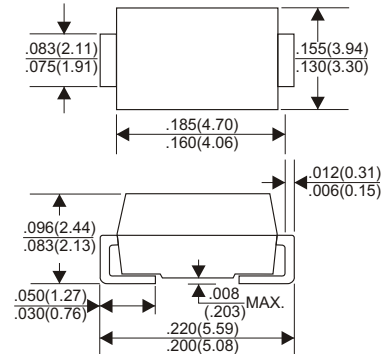
● **FEATURES**

- . Super Low forward voltage drop
- . High current capability
- . Low reverse current
- . High surge current capability
- . Epitaxial construction

● **MECHANICAL DATA**

- . Case: Molded plastic
- . Epoxy: UL 94V-0 rate flame retardant
- . Metallurgically bonded construction
- . Polarity: Color band denotes cathode end
- . Mounting position: Any
- . Weight: 0.1 grams

DO-214AA(SMB)



Dimensions in inches and (millimeters)

● **MAXIMUM RATINGS AND ELECTRICAL CHARACTERISTICS**

Rating 25 ambient temperature unless otherwise specified.
Single phase half wave, 60Hz, resistive or inductive load.
For capacitive load, derate current by 20%.

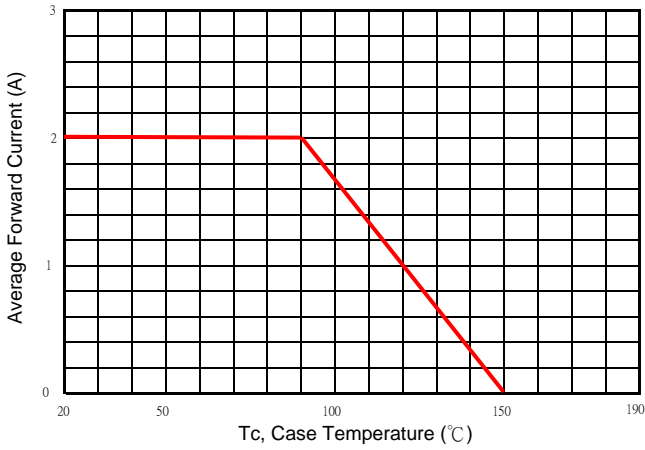
TYPE NUMBER	SK24BL	UNITS
Maximum Recurrent Peak Reverse Voltage	40	V
Working Peak Reverse Voltage	40	V
Maximum DC Blocking Voltage	40	V
Maximum Average Forward Rectified Current, See Fig. 1	2.0	A
Peak Forward Surge Current, 8.3 ms single half Sine-wave superimposed on rated load (JEDEC method)	90	A
Maximum Instantaneous Forward Voltage at 2.0A	0.39	V
Maximum DC Reverse Current $T_a=25$ at $V_R=40V$	0.1	mA
At Rated DC Blocking Voltage $T_a=100$	5.0	
Typical Junction Capacitance (Note1)	180	pF
Typical Thermal Resistance $R_{\theta JA}$ (Note 2)	65	/ W
Operating Temperature Range T_J	-50 ~ +100	
Storage Temperature Range T_{STG}	-50 ~ +125	

NOTES:

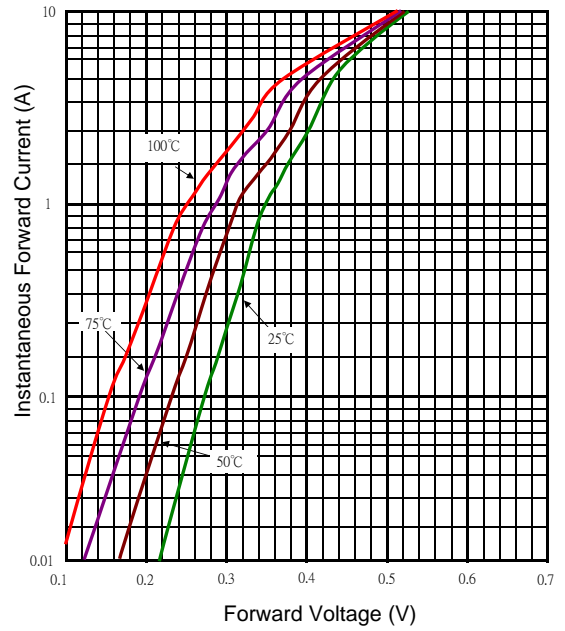
1. Measured at 1MHz and applied reverse voltage of 4.0V D.C.
2. Rating applies when surface mounted on the minimum pad size recommended, PC Board with 7.0 X 7.0mm copper pad.

● RATING AND CHARACTERISTIC CURVES

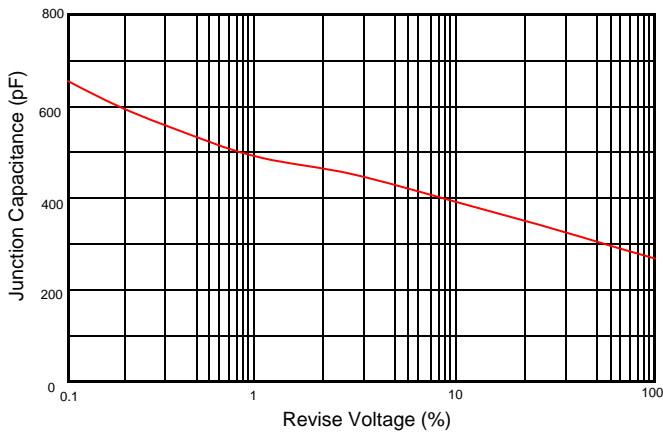
Typical Forward Current Derating Curve



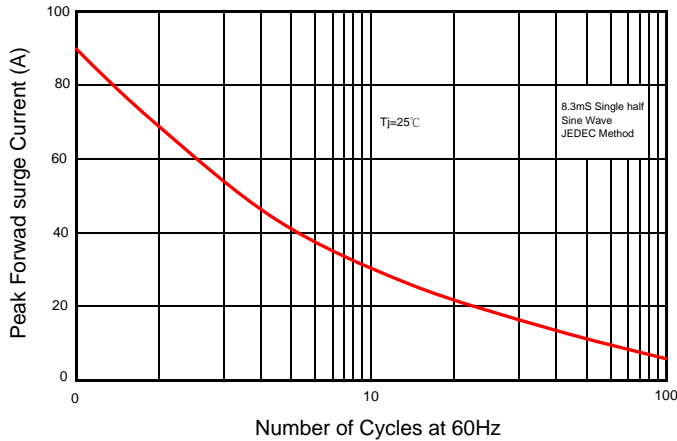
Typical Forward Characteristic



Typical Junction Capacitance



Maximum Non- Repetitive Forward Surge Current



Typical Reverse Characteristic

