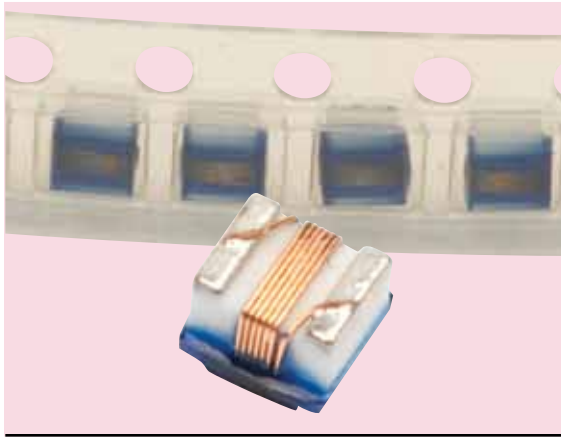


RL-7700-3HQ

RL-7700-4HQ

HIGH Q CERAMIC

WIREWOUND CHIP INDUCTORS



DESCRIPTION

- High Q Chip Inductor

ENVIRONMENTAL DATA

- Storage temperature range: -55°C to +130°C
- Operating temperature range: -40°C to +130°C

PACKAGING INFORMATION

- Packaging information: pg. 491

FEATURES & APPLICATIONS

- Ceramic core wirewound construction
- No batch-to-batch variations in inductance
- High reliability due to ceramic wirewound construction
- Widely used in the communications applications such as cellular phones and other high frequency electronic devices

Verify operation with sample in actual circuit. Order samples at www.rencousa.com.

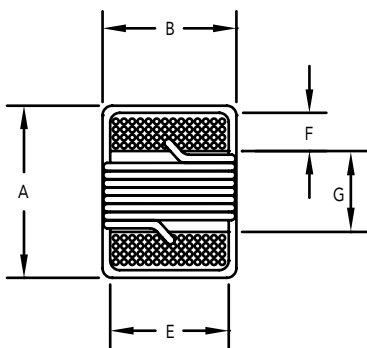
MECHANICAL DIMENSIONS

U.S. Standard (mm)

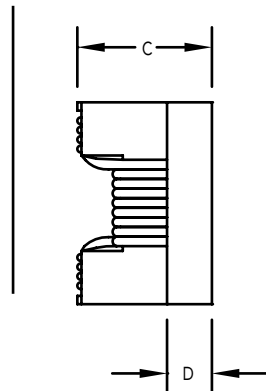
PART NUMBER	A (MAX.)	B (MAX.)	C (MAX.)	D (REF.)	E (MAX.)	F (MAX.)	G (MAX.)
RL-7700-3HQ	0.090 (2.29)	0.070 (1.73)	0.040 (1.03)	0.020 (0.51)	0.050 (1.27)	0.017 (0.44)	0.040 (1.02)
RL-7700-4HQ	0.120 (2.92)	0.110 (2.79)	0.055 (1.40)	0.030 (0.65)	0.080 (2.03)	0.020 (0.51)	0.059 (1.52)

PART NUMBER	PART WEIGHT	H (REF.)	I (REF.)	J (REF.)
RL-7700-3HQ	0.13g (0.005oz)	0.070 (1.78)	0.040 (1.02)	0.030 (0.76)
RL-7700-4HQ	0.13g (0.005oz)	0.100 (2.54)	0.040 (1.02)	0.050 (1.27)

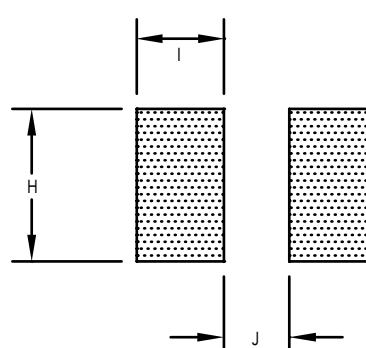
BOTTOM VIEW



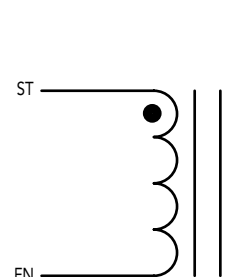
SIDE VIEW



RECOMMENDED LAND PATTERN



SCHEMATIC



RENCO ELECTRONICS INC.

595 International Place, Rockledge, FL 32955-4200 USA • www.rencousa.com • ISO 9001 Certified
Toll Free Engineering Hot Line: 800.645.5828 • P: 321.637.1000 • F: 321.637.1600



RL-7700-3HQ

Renco Part No. RL-7700-3HQ	Tolerance Available	L (nH)	DCR Max. (Ohms)	Q Min.	SRF Min. (MHz)	Testing Frequency (MHz)	Irms (mA) Max.
RL-7700-3HQ-2N5	K,J	2.5	0.020	80.0	6000.0	250.0	1600.0
RL-7700-3HQ-5N6	K,J	5.6	0.035	98.0	6000.0	250.0	1600.0
RL-7700-3HQ-6N2	K,J	6.2	0.035	88.0	4750.0	250.0	1600.0
RL-7700-3HQ-12N	K,J	12.0	0.045	80.0	3000.0	250.0	1600.0
RL-7700-3HQ-16N	K,J,G	16.0	0.060	72.0	2950.0	250.0	1500.0
RL-7700-3HQ-18N	K,J,G	18.0	0.060	75.0	2550.0	250.0	1400.0
RL-7700-3HQ-20N	K,J,G	20.0	0.055	70.0	2050.0	250.0	1400.0
RL-7700-3HQ-27N	K,J,G	27.0	0.070	75.0	2000.0	250.0	1300.0
RL-7700-3HQ-30N	K,J,G	30.0	0.095	65.0	1950.0	250.0	1200.0
RL-7700-3HQ-39N	K,J,G	39.0	0.110	65.0	1600.0	250.0	1100.0
RL-7700-3HQ-48N	K,J,G	48.0	0.095	65.0	1400.0	250.0	1200.0
RL-7700-3HQ-51N	K,J,G	51.0	0.120	65.0	1400.0	250.0	1000.0

RL-7700-4HQ

Renco Part No. RL-7700-4HQ	Tolerance Available	L (nH)	DCR Max. (Ohms)	Q Min.	SRF Min. (MHz)	Testing Frequency (MHz)	Irms (mA) Max.
RL-7700-4HQ-3N0	K,J	3.0	0.040	70.0	6000.0	50.0	1600.0
RL-7700-4HQ-4N1	K,J	4.1	0.050	75.0	6000.0	50.0	1600.0
RL-7700-4HQ-7N8	K,J	7.8	0.050	75.0	3800.0	50.0	1600.0
RL-7700-4HQ-10N	K,J,G	10.0	0.060	60.0	3600.0	50.0	1600.0
RL-7700-4HQ-12N	K,J,G	12.0	0.060	70.0	2800.0	50.0	1500.0
RL-7700-4HQ-18N	K,J,G	18.0	0.070	62.0	2700.0	50.0	1400.0
RL-7700-4HQ-22N	K,J,G	22.0	0.070	62.0	2050.0	50.0	1400.0
RL-7700-4HQ-33N	K,J,G	33.0	0.090	75.0	1700.0	50.0	1300.0
RL-7700-4HQ-39N	K,J,G	39.0	0.090	75.0	1300.0	50.0	1300.0
RL-7700-4HQ-47N	K,J,G	47.0	0.120	75.0	1450.0	50.0	1200.0
RL-7700-4HQ-56N	K,J,G	56.0	0.120	75.0	1230.0	50.0	1200.0
RL-7700-4HQ-68N	K,J,G	68.0	0.130	80.0	1150.0	50.0	1100.0
RL-7700-4HQ-82N	K,J,G	82.0	0.160	80.0	1060.0	50.0	1100.0
RL-7700-4HQ-R10	K,J,G	100.0	0.160	62.0	820.0	50.0	1000.0

NOTES:

- ELECTRICAL SPECIFICATIONS MEASURED AT 25°C
- Irms - CURRENT THAT CAUSES THE TEMPERATURE TO RISE APPROX. 40°C ABOVE AMBIENT OF 25°C
- TEST EQUIPMENT: AGILENT / HP 4287 + AGILENT / HP 8753D OR HP 4291A
- WHEN HAND SOLDERING, APPLY SOLDER IRON TO THE PRINTED CIRCUIT BOARD ONLY. TEMPERATURE OF THE IRON TIP SHOULD NOT EXCEED 260°C WITH SOLDERING TIME < 3 SECONDS
- REFLOW SOLDERING CONDITION: 230°C FOR 10 SECONDS MAX

PART NUMBER IDENTIFICATION

RL-7700 -3 HQ 5N6 K
 (1) (2) (3) (4) (5)

- SERIES NAME
- DIMENSIONS
- TYPE CODE HQ - HIGH Q FACTOR
- INDUCTANCE CODE
- TOLERANCE CODE: G - ±2% J - ±5% K - ±10%



RENCO ELECTRONICS INC.

595 International Place, Rockledge, FL 32955-4200 USA • www.rencousa.com • ISO 9001 Certified
 Toll Free Engineering Hot Line: 800.645.5828 • P: 321.637.1000 • F: 321.637.1600

