

**PLEASE CHECK WWW.MOLEX.COM FOR LATEST PART INFORMATION**

**Part Number:** [0346760001](#)  
**Status:** **Active**  
**Description:** .64mm Cavity Plug

**Documents:**

[Drawing \(PDF\)](#) [RoHS Certificate of Compliance \(PDF\)](#)

**General**

Product Family	Crimp Housings
Series	<a href="#">34676</a>
Product Name	N/A

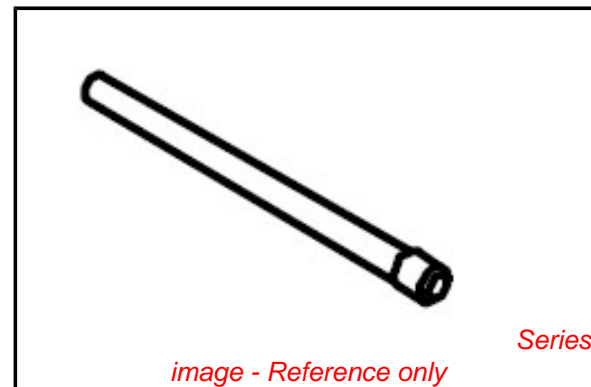
**Physical**

Gender	Plug
Glow-Wire Compliant	No
Number of Rows	0
Packaging Type	Bag
Panel Mount	N/A
Pitch - Mating Interface (in)	0.000 In
Pitch - Mating Interface (mm)	0.00 mm
Temperature Range - Operating	N/A

**Material Info**

**Reference - Drawing Numbers**

Sales Drawing	7U5T-10C930-FA, SD-34676-000
---------------	------------------------------



*image - Reference only*

**EU RoHS**

**ELV and RoHS  
Compliant**  
**REACH SVHC**  
 Not Reviewed  
**Halogen-Free  
Status**

**China RoHS**

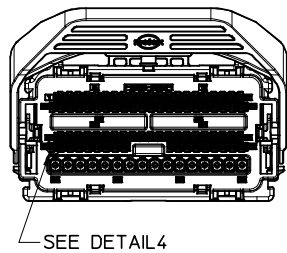
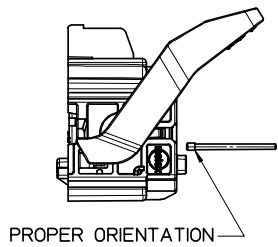
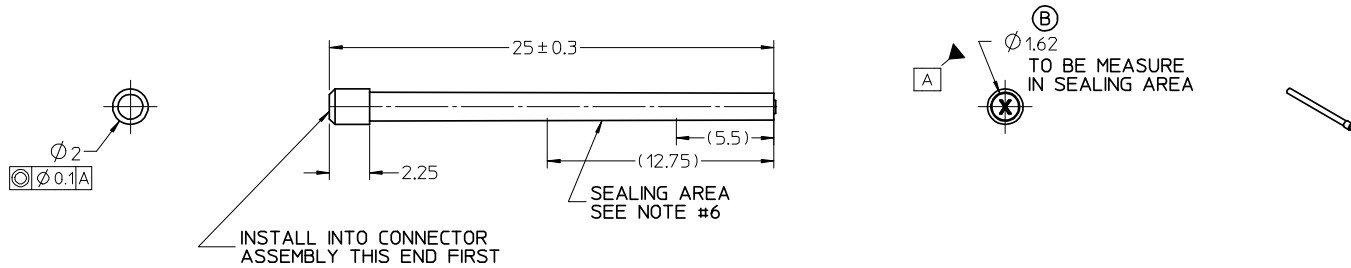


**Need more information on product  
environmental compliance?**

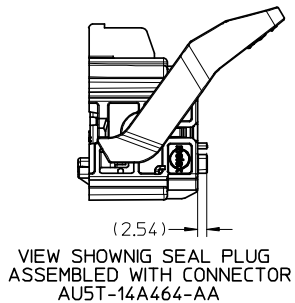
Email [productcompliance@molex.com](mailto:productcompliance@molex.com)  
 For a multiple part number RoHS Certificate of  
 Compliance, [click here](#)

Please visit the [Contact Us](#) section for any  
 non-product compliance questions.

**Search Parts in this Series**  
[34676Series](#)



DETAIL 4  
SCALE 5:1  
INSTALL SEAL PLUG INTO  
CONNECTOR ASSEMBLY  
AS SHOWN PER NOTE 4



UNLESS OTHERWISE SPECIFIED:

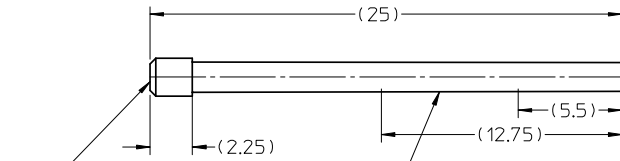
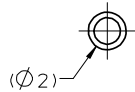
1. MATERIAL: POLYESTER (PBT), GLASS FILLED 30%.
2. MEETS USCAR-2, REV 4 SPECIFICATION
3. MATES WITH 0.64mm "GET" RECEPTACLE TERMINAL CAVITIES
4. SEAL PLUG WILL LOCK INTO HOUSING LOCKING FINGER WHEN INSTALLED IN PROPER ORIENTATION. USE PUSH, CLICK, PULL METHOD FOR INSTALLATION.
5. TOLERANCES: LINEAR  $\pm 0.1$ <sup>o</sup>  
ANGULAR  $\pm 3$ <sup>o</sup>
6. SEALING SURFACE: NO WITNESS LINES OR IMPERFECTIONS PERMITTED IN THIS AREA.
7. 100% MAXIMUM REGRIND ALLOWED.

FORD P/N	MOLEX P/N
7U5T-10C930-FA	34676-0001

LTRS.	REVISIONS		
ORIGINATOR	CHECKER	ENGR APP	MATL APP
A	RELEASED 7U5T-10C930-FA ARCHIVE DATE: 20061117 AELE-E-11776560-105		
KDEKOSKI	RBAUMAN	LEECE	
B	REMOVED TOLERANCE ARCHIVE DATE: 20080516 AELE-E-11776560-204		
CELDER	KDEKOSKI	LEECE	

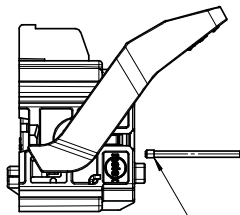
REFERENCE ---			
PART MUST COMPLY WITH MATERIAL SPECIFICATION WSS-M99P9999-A1 TO HELP SAFEGUARD HEALTH, SAFETY AND THE ENVIRONMENT.			
DRAFTED IN ACCORDANCE WITH FAO ENGINEERING DRAFTING STANDARD CURRENT AT INITIAL RELEASE		3RD ANGLE PROJ DIMENSIONS IN MILLIMETERS	
CAD TYPE X-OTHER	CAD LOC. MOLEX	CAD FILE	IS MASTER
OPER. NO.	UNIT MM	DRAWING 7U5T-10C930-FA	
DESIGN CELDER	DETAIL KDEKOSKI	TITLE LOOSE PIECE PLUG 064 CAVITY	SHT 1 OF 1
CHECKED DLANGOLF	SAFETY		
SCALE 5:1	DATE 2008/05/19	DIVISION PLANT	

DRW SIZE A2/C

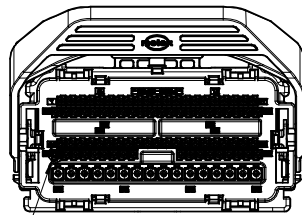


SEALING AREA  
SEE NOTE #6

INSTALL INTO CONNECTOR  
ASSEMBLY THIS END FIRST



PROPER ORIENTATION

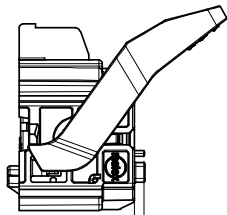


SEE DETAIL 4



DETAIL 4  
SCALE 5:1

INSTALL SEAL PLUG INTO  
CONNECTOR ASSEMBLY  
AS SHOWN PER NOTE 4



VIEW SHOWING SEAL PLUG  
ASSEMBLED WITH CONNECTOR  
AU5T-14A464-AA

UNLESS OTHERWISE SPECIFIED:

1. MATERIAL: POLYESTER (PBT), GLASS FILLED 30%.
2. MEETS USCAR-2, REV 4 SPECIFICATION
3. MATES WITH 0.64mm "GET" RECEPTACLE TERMINAL CAVITIES
4. SEAL PLUG WILL LOCK INTO HOUSING LOCKING FINGER WHEN INSTALLED IN PROPER ORIENTATION. USE PUSH, CLICK, PULL METHOD FOR INSTALLATION.
5. TOLERANCES: LINEAR  $\pm 0.1$   
ANGULAR  $\pm 3^\circ$
6. SEALING SURFACE: NO WITNESS LINES OR IMPERFECTIONS PERMITTED IN THIS AREA.
7. 100% MAXIMUM REGRIND ALLOWED.

MOLEX P/N  
34676-0001

ENTER DESCRIPTION EC NO: UAU2008-0652 DRWN:DEKOSKI 2008/04/09 CHKD:D.LANGOLF 2008/04/09 APPR:RBAUMAN 2008/04/09	QUALITY SYMBOLS
	▼=0 ▽=0
	DESCRIPTION
	REV
	A

GENERAL TOLERANCES (UNLESS SPECIFIED)	
mm	INCH
4 PLACES ± ---	+ ---
3 PLACES ± ---	+ ---
2 PLACES ± ---	+ ---
1 PLACE ± ---	+ ---
ANGULAR ± ---°	
DRAFT WHERE APPLICABLE MUST REMAIN WITHIN DIMENSIONS	

DIMENSION STYLE MM ONLY	
DRAWN BY	DATE
K.DEKOSKI	17NOV2006
CHECKED BY	DATE
D.LANGOLF	17NOV2006
APPROVED BY	DATE
R.BAUMAN	17NOV2006
MATERIAL NO.	
346760001	
SIZE	
C	

SCALE 5:1	DESIGN UNITS METRIC	THIRD ANGLE PROJECTION
TITLE LOOSE PIECE PLUG 064 CAVITY		
MOLEX INCORPORATED		SHEET NO. 1 OF 1
DOCUMENT NO. SD-34676-000		
THIS DRAWING CONTAINS INFORMATION THAT IS PROPRIETARY TO MOLEX INCORPORATED AND SHOULD NOT BE USED WITHOUT WRITTEN PERMISSION		