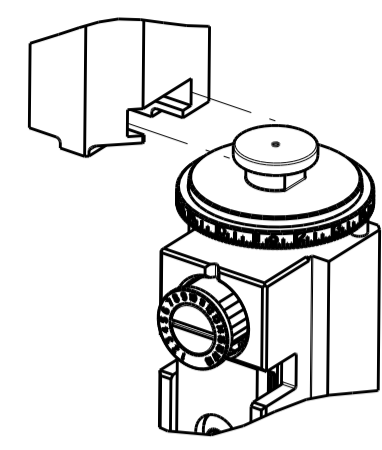


ATLANTIC VERSION TERMINATOR INTERFACE ADAPTER	PART NUMBER	REVISION	DESCRIPTION	FEED TYPE	APPLICATOR STYLE CONVERSION CHART						
					CONVERT TO	PART NUMBERS REQUIRED					
	2150307-1	A	FINE CRIMP HEIGHT ADJUST	MECHANICAL	PNEUMATIC FEED	2119950-1	2119792-2	-	2119641-1	-	2063440-1
	2150307-2	A	FINE CRIMP HEIGHT ADJUST	PNEUMATIC	SERVO LATCH PLATE	2119951-1	1901697-1	8-2150307-5	-	-	2168400-7 (QUANTITY 2)
	2150307-5	A	FINE CRIMP HEIGHT ADJUST	SERVO LATCH PLATE	SMART APPLICATOR	2161326-1	-	8-2150307-4	-	-	-
	2150307-6	A	NON-CRIMP HEIGHT ADJUST	SERVO LATCH PLATE	MECHANICAL FEED	2119949-1	2063961-1	5-18022-5	2119653-1	-	-
	2150307-7	A	FINE CRIMP HEIGHT ADJUST	NONE	SERVO LATCH PLATE	2119951-1	1901697-1	8-2150307-5	-	-	2168400-7 (QUANTITY 2)
	7-2150307-7	A	CRIMP TOOLING KIT	-	SMART APPLICATOR	2161326-1	-	8-2150307-4	-	-	-

APPLICATOR DATA		
CRIMP	SIZE	TYPE
WIRE	.110 [2.79 mm]	F
INSUL	.180 [4.57 mm]	F
APPL INSTRUCTIONS 408-10390		

TERMINAL DATA: TE TERMINAL	TE CRIMP SPECIFICATION
TERMINAL NAME: RING, AMPLIVAR	
WIRE STRIP LENGTH 4.78-4.78 mm [1.88-.188 IN]	INSULATION DIAMETER RANGE ∅3.18-4.19 mm [1.25-.165 IN]
TERMINAL APPLICATION SPECIFICATION 114-2084	-
TERMINALS APPLIED	
TE TERMINAL	TE TERMINAL
60322-2	

WIRE SIZE	CRIMP HEIGHT mm [INCH]	CRIMP HEIGHT REFERENCE SETTING
16 AWG	1.47+/-0.05 [1.058+/-0.002]	8.0
18 AWG	1.35+/-0.05 [1.053+/-0.002]	8.8
20 AWG	1.27+/-0.05 [1.050+/-0.002]	9.4

- 1 RECOMMENDED SPARE PARTS
- 2 GREASE BEARING SURFACES LIGHTLY
- 3 LUBRICATE DAILY PER THE APPLICATOR INSTRUCTION SHEET SUPPLIED WITH THE APPLICATOR.
- 4 APPLICATOR SPECIFIC DATA TO BE ENTERED INTO BLANK MEMORY CHIP AT ASSEMBLY. SEE BELOW FOR PART NUMBER:
MECHANICAL FEED WITH "SMART APPLICATOR" CONVERSION: 8-2150307-4
PNEUMATIC FEED WITH "SMART APPLICATOR" CONVERSION: 8-2150307-4
SERVO FEED WITH "FINE CRIMP HEIGHT ADJUST": 8-2150307-5
SERVO FEED WITH "NON-CRIMP HEIGHT ADJUST": 8-2150307-6
- 5 ADJUSTMENT OF THE STRIPPER MAY BE REQUIRED WHEN MOVING THE APPLICATOR BETWEEN BENCH AND LEADMAKER APPLICATIONS.
- 6 APPLY PART NUMBER 1-23419-5 LOCTITE TO THREADS OF ITEMS 50, 62 & 242. FOR -6 ONLY APPLY PART NUMBER 1-23419-5 LOCTITE TO THREADS OF ITEMS 37, 50 & 242.
- 7 GREASE THREADS, GROOVE AND O-RING ON ITEMS 35 & 252.
- 8 MAGNET, ITEM 166 MUST BE ORIENTED CORRECTLY IN ORDER TO PROPERLY ACTUATE THE COUNTER.
- 9 CRIMP HEIGHT REFERENCE SETTING WAS THE SETTING USED WHEN THE APPLICATOR WAS QUALIFIED AT THE FACTORY. ADJUSTMENT MAY BE NECESSARY WHEN RUNNING APPLICATOR IN THE FIELD.
- 10 SPARE FEED CAM STORAGE LOCATION REFER TO INSTRUCTION SHEET FOR ADDITIONAL INFORMATION.
- 11 THE RECOMMENDED SET-UP FOR END FEED APPLICATORS IS POST-FEED WITH ITEM 2119653-1. THE APPLICATOR CAN BE CONFIGURED FOR PRE-FEED WITH ITEM 2119652-1 BUT MAY ENCOUNTER PROBLEMS WITH SOME APPLICATIONS. FEED ISSUES OR TERMINAL JAMMING MAY OCCUR IN THE PRE-FEED CONFIGURATION.
- 12 WHEN ASSEMBLING -6 NON-CRIMP HEIGHT ADJUST APPLICATOR USE SHIM PACK 2119957-2 TO ALIGN APPLICATOR'S MAXIMUM WIRE CRIMP HEIGHT AT NORMAL TERMINATOR SHUT HEIGHT

***WARNING**
ON INSTALLATION, SET WIRE DISC, ITEM 40 TO LARGEST WIRE SIZE SETTING. USE OF SETTINGS BELOW MINIMUM REQUIRED CRIMP HEIGHT SETTING WILL CAUSE DAMAGE TO CRIMP TOOLING.

-	-	1	-	-	-	2119957-2	APPLICATOR SHIM PACK	260
-	1	-	1	1	1	8-21084-0	O-RING, .676 ID, .070 DIA. MAT.	252
-	-	-	-	1	-	2119640-1	PUSH ROD, AIR FEED	250
-	-	-	-	1	-	2079988-1	BUSHING, LCH5-12, MISUMI	249
-	-	-	-	1	-	2119641-1	FEED CAM, AIR FEED	248
-	1	-	1	1	1	2119798-1	DETENT PIN	247
-77	-7	-6	-5	-2	-1	PART NO	DESCRIPTION	ITEM NO

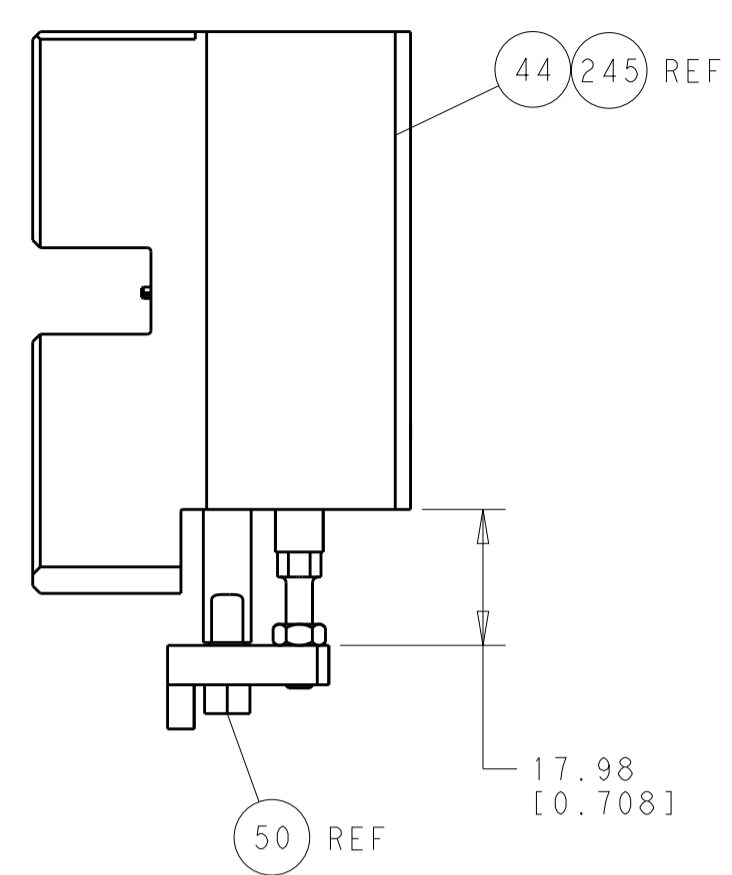
ATLANTIC VERSION
Shown on sheets 1 of 4 & 2 of 4
(Pacific version shown on sheets 3 of 4 & 4 of 4)

SET UP GAUGE 2119599-2	LOC A	DIST 66	REVISIONS			
P		LTM	DESCRIPTION	DATE	OWN	APVD
1			DEVELOPMENT	09JAN2013	KH	SX
2			CHANGE PARTS	27APR2013	YY	UG
A			RELEASED	03JUL2013	YY	UG

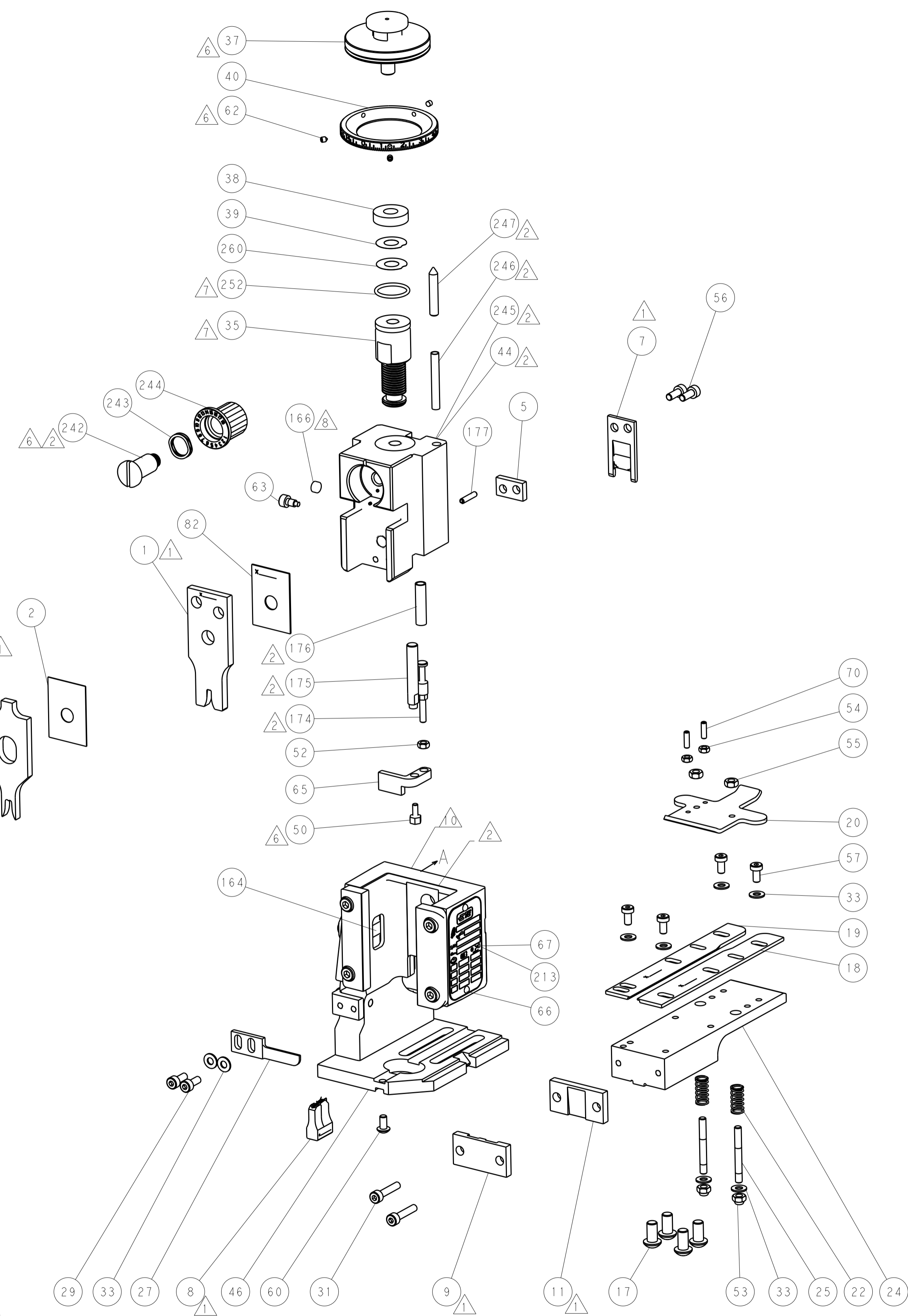
-	1	-	1	1	1	1-22279-3	SPRING, COMPRESSION	246
-	-	1	-	-	-	2119759-1	RAM, AMP STYLE, END FEED, NON-ADJUST	245
-	1	1	1	1	1	2119082-9	CAM, SNAIL, INSULATION ADJUSTMENT	244
-	1	1	1	1	1	2079764-1	WASHER, WAVE SPRING, CREST-TO-CREST	243
-	1	1	1	1	1	2119083-1	RETAINER, INSULATION DIAL	242
-	-	2	2	-	-	2168400-7	SHCS, LOW HEAD, RoHS, M5 X 10	240
-	-	-	-	-	1	2119580-1	MECHANICAL FEED ASSEMBLY	239
-	-	-	-	1	-	2063440-1	AIR FEED MODULE	238
-	-	1	1	-	-	2119740-2	TAG, IDENTIFICATION	213
-	-	REFREF	-	-	-	1901697-1	FEED FINGER ASSEMBLY, EF	183
-	1	1	1	1	1	6-993111-6	PIN, SLOTTED SPRING 3.0 X 14.0	177
-	1	1	1	1	1	8-22280-7	SPRING, COMPRESSION	176
-	1	1	1	1	1	1752353-2	GUIDE PIN, HOLDDOWN	175
-	1	1	1	1	1	1901680-2	GUIDE PIN, HOLDDOWN	174
-	-	-	-	2	-	21045-3	RING, RETAIN, EXTERN, 3/16 CRESCENT	172
-	1	1	1	1	1	994969-1	MAGNET, RARE EARTH HIGH ENERGY	166
-	REFREF	REFREF	REFREF	REFREF	REFREF	994970-2	COUNTER, MAGNETIC	164
-	-	-	-	1	-	240638-1	SPRING, FEED FINGER	163
-	-	-	-	1	-	3-23627-7	PIN, RETAIN, GRVD, 3/16 X .854	137
-	-	REFREF	-	-	-	SEE NOTE 4	MEMORY CHIP, PROGRAMMED	135
-	-	1	1	-	-	1633743-1	SERVO FEED LATCH ASM	133
-	1	1	1	1	1	455888-6	SPACER, CRIMPER	82
-	1	1	1	1	1	2119956-2	DOCUMENTATION PACKAGE	71
-	2	2	2	2	2	2-18032-2	SCR, SET, FLT POINT M3 X 10.0	70
-	1	-	-	1	1	2119740-1	TAG, IDENTIFICATION	67
-	2	2	2	2	2	2168078-1	SCREW, DRIVE, RH, RoHS, 2 x .188	66
-	1	1	1	1	1	1-1901681-8	HOLDDOWN, TERMINAL	65
-	1	-	1	1	1	2119793-1	LIMITER, ADJUSTMENT BOLT	63
-	3	-	3	3	3	992763-5	SCR, SET, SOC, CONE POINT, M3 x 4.0	62
-	1	1	1	1	1	2079383-4	SCR, BHSC, RoHS (M4 X 8)	60
-	-	-	-	-	1	5-18022-5	SCR, HEX HD CAP, M4 X 6.0	59
-	-	-	-	-	1	2063961-1	FEED FINGER	58
-	4	4	4	4	4	2168400-4	SHCS, LOW HEAD, RoHS, M4 X 8	57
-	2	2	2	2	2	1-2168083-0	SCR, SKT HD CAP, RoHS, M4 X 10	56
-	2	2	2	2	2	5018030-2	NUT, HEX, REG, RoHS, M4	55
-	2	2	2	2	2	5018030-1	NUT, HEX, REG, RoHS, M3	54
-	2	2	2	2	2	986965-8	NUT, LOCK, HEX, TORQUE (M4)	53
-	1	1	1	1	1	1-5018030-0	NUT, HEX, REG, RoHS, M3.5	52
-	-	-	-	1	-	2119792-2	PAWL, EF, AIR	51
-	1	1	1	1	1	4-1752354-1	STANDOFF, HOLD-DOWN	50
-	-	-	-	1	2	18023-9	SCR, SKT HD CAP M4 X 6.0	49
-	-	-	-	-	1	2119652-1	FEED CAM, PRE FEED	48
-	-	-	-	-	1	2119653-1	FEED CAM, POST FEED	47
-	1	1	1	1	1	2119655-5	APPLICATOR BASIC ASSEMBLY, EF	46
-	1	-	1	1	1	2119369-1	RAM, AMP STYLE, END FEED	44
-	1	1	1	1	1	2079383-7	SCR, BHSC, RoHS (M8 X 25)	41
-	1	-	1	1	1	2119645-1	DISC, NUMBERED FA WIRE ADJUSTMENT	40
-	1	-	1	1	1	2119957-1	APPLICATOR SHIM PACK	39
-	1	1	1	1	1	1-2119644-2	RAM WASHER, PRECISION	38
-	1	1	1	1	1	2119085-1	FA HEAD, ATLANTIC STYLE	37
-	1	-	1	1	1	2119092-1	BOLT, ADJUSTMENT	35
-	8	8	8	8	8	1-18028-2	WASHER, FLAT, REG M4	33
-	2	2	2	2	2	2168083-9	SCR, SKT HD CAP, RoHS, M4 X 20	31
-	2	2	2	2	2	1-2168083-0	SCR, SKT HD CAP, RoHS, M4 X 10	29
-	1	1	1	1	1	240639-4	STRIPPER (MACHINING)	27
-	2	2	2	2	2	1320906-1	STUD, THREADED	25
-	1	1	1	1	1	1752371-1	PLATE, STRIP GUIDE	24
-	2	2	2	2	2	2-22281-3	SPRING, COMPRESSION	22
-	1	1	1	1	1	1752373-4	DRAG	20
-	1	1	1	1	1	1901696-3	STRIP GUIDE, REAR	19
-	1	1	1	1	1	1901695-3	STRIP GUIDE, FRONT	18
-	4	4	4	4	4	1-2079383-1	SCR, BHSC, RoHS (M6 X 12)	17
-	1	1	1	1	1	240644-1	PLATE, REAR SHEAR	11
-	-	-	-	-	-	-	-	10
-	1	1	1	1	1	690482-5	PLATE, FRONT SHEAR	9
-	1	1	1	1	1	1803064-1	ANVIL, COMBINATION	8
-	1	1	1	1	1	2217206-7	BLADE, SLUG	7
-	-	-	-	-	-	-	-	6
-	1	1	1	1	1	4-240641-1	SPACER	5
-	1	1	1	1	1	3-238009-8	BLOCK, FL CRIMPER SPACER	4
-	1	1	1	1	1	7-1633961-2	CRIMPER, INSULATION F PREMIUM	3
-	1	1	1	1	1	455888-3	SPACER, CRIMPER	2
-	1	1	1	1	1	456408-9	CRIMPER, WIRE PREMIUM	1
-77	-7	-6	-5	-2	-1	PART NO	DESCRIPTION	ITEM NO

DIMENSIONS:		TOLERANCES UNLESS OTHERWISE SPECIFIED:		DRAWN H. HUANG 09JAN2013		CHK S. XI 09JAN2013		DWN S. XI 09JAN2013		NAME Ocean End Feed Applicator	
mm		0 PLC ±.05		APVD S. XI 09JAN2013		PRODUCT SPEC		SIZE A		RESTRICTED TO	
1 PLC ±0.13		2 PLC ±0.013		APPLICATOR SPEC		APPLICATION SPEC		SCALE 1:1		SHEET 1 OF 4	
3 PLC ±0.013		4 PLC ±0.0001		WEIGHT		CUSTOMER ACCESSIBLE PRODUCTION DRAWING		SCALE 1:1		REV A	
ANGLES		FINISH		MATERIAL		WEIGHT		SCALE 1:1		SHEET 1 OF 4	

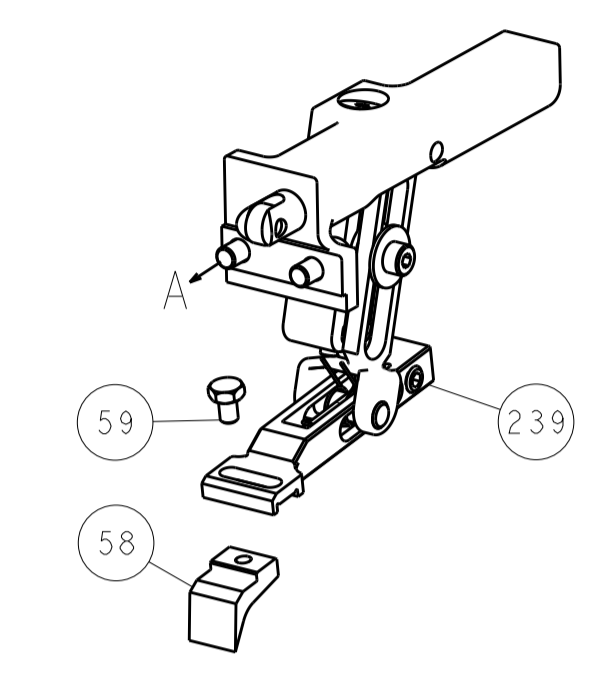
LOC	DIST	REV	DATE	BY	APPV
A	66				
REVISIONS			DESCRIPTION	DATE	BY
-			SEE SHEET 1	-	-



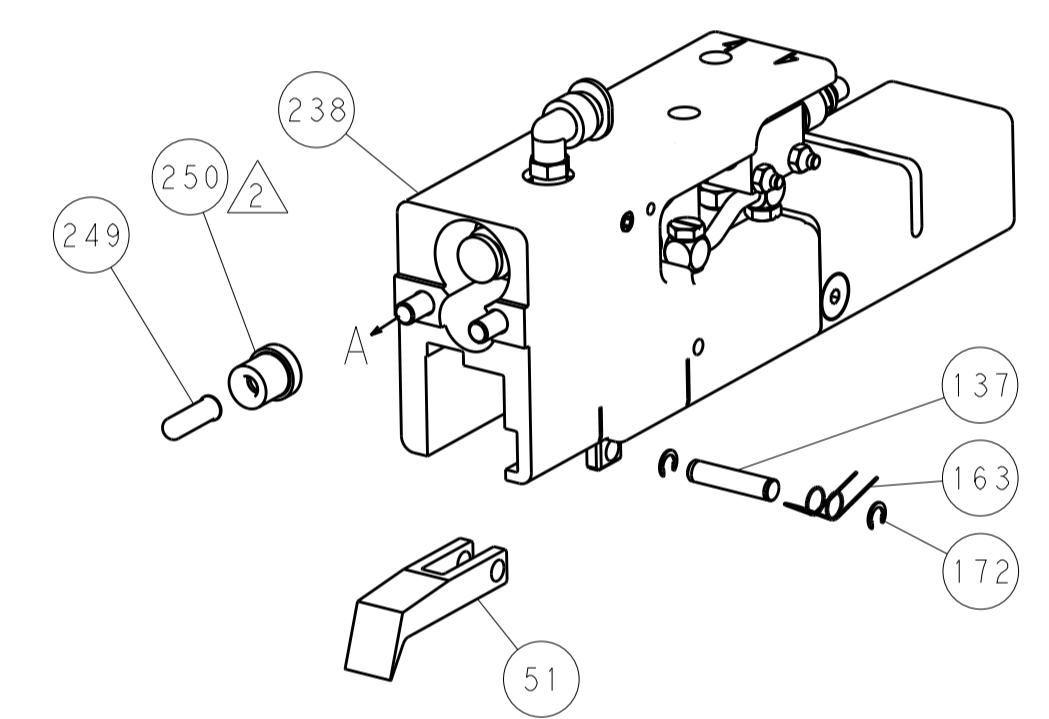
HOLDDOWN SET-UP



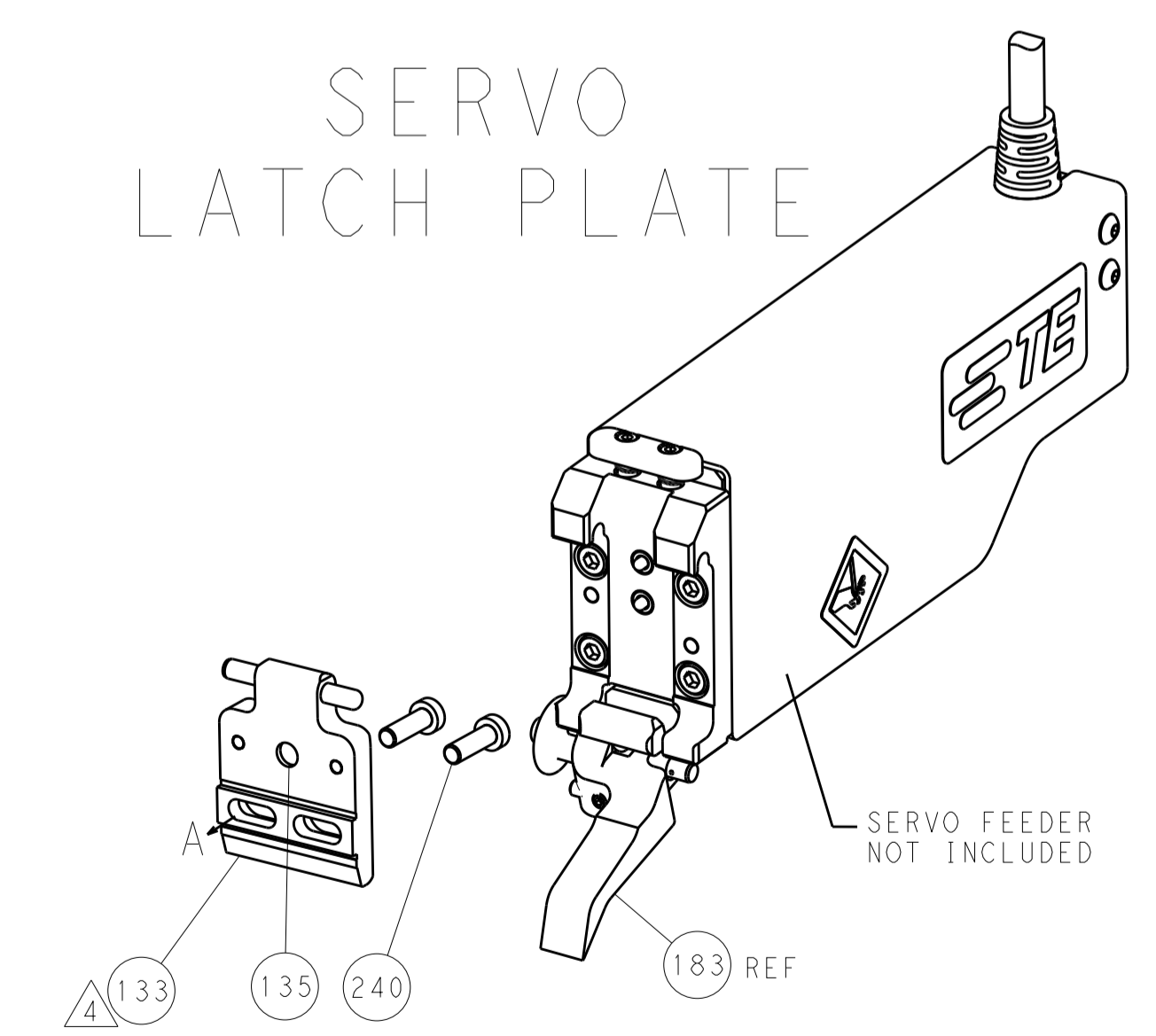
FEED TYPE
MECHANICAL



PNEUMATIC



SERVO
LATCH PLATE



CAM POSITIONS



ATLANTIC VERSION
 Shown on sheets 1 of 4 & 2 of 4
 (Pacific version shown on sheets 3 of 4 & 4 of 4)

DIMENSIONS:		TOLERANCES UNLESS OTHERWISE SPECIFIED:		DWG: K. HUANG 09JAN2013		TE Connectivity	
mm		0 PLC ±0.5		CHK: S. XI 09JAN2013		Harrisburg, PA 17105-3608	
Ø		1 PLC ±0.13		APPV: S. XI 09JAN2013		NAME: Ocean End Feed Applicator	
H		3 PLC ±0.013		PRODUCT SPEC:		SIZE: CAGE CODE: DRAWING NO:	
ANGLES		4 PLC ±0.0001		APPLICATION SPEC:		RESTRICTED TO:	
FINISH:		5 PLC ±0.0001		WEIGHT:		A1 00779 ©=2150307	
MATERIAL:		6 PLC ±0.0001		Customer Accessible Production Drawing		SCALE: 1:1 SHEET 2 OF 4 REV A	

PART NUMBER	REVISION	DESCRIPTION	FEED TYPE	APPLICATOR STYLE CONVERSION CHART						
				CONVERT TO	PART NUMBERS REQUIRED					
2-2150307-1	A	FINE CRIMP HEIGHT ADJUST	MECHANICAL	PNEUMATIC FEED	2119950-1	2119792-2	-	2119641-2	-	2063440-1
				SERVO LATCH PLATE	2119951-1	1901697-1	8-2150307-5	-	2168400-7 (QUANTITY 2)	
				SMART APPLICATOR	2161326-1	-	8-2150307-4	-	-	
2-2150307-2	A	FINE CRIMP HEIGHT ADJUST	PNEUMATIC	MECHANICAL FEED	2119949-1	2063961-1	5-18022-5	2119653-2	-	-
				SERVO LATCH PLATE	2119951-1	1901697-1	8-2150307-5	-	2168400-7 (QUANTITY 2)	
				SMART APPLICATOR	2161326-1	-	8-2150307-4	-	-	
2-2150307-5	A	FINE CRIMP HEIGHT ADJUST	SERVO LATCH PLATE	2119949-1	2063961-1	5-18022-5	2119653-2	-	-	
2-2150307-7	A	FINE CRIMP HEIGHT ADJUST	NONE	-	-	-	-	-	-	
7-2150307-7	A	CRIMP TOOLING KIT	-	-	-	-	-	-	-	

CRIMP SIZE	TYPE
WIRE .110 [2.79 mm]	F
INSUL .180 [4.57 mm]	F
APPL INSTRUCTIONS 408-10390	

TERMINAL DATA: TE TERMINAL	TE CRIMP SPECIFICATION		
TERMINAL NAME: RING, AMPLIVAR			
WIRE STRIP LENGTH 4.78-4.78 mm [1.88-.188 IN]	INSULATION DIAMETER RANGE 3.18-4.19 mm [1.25-.165 IN]		
TERMINAL APPLICATION SPECIFICATION 114-2084			
TERMINALS APPLIED			
TE TERMINAL	TE TERMINAL	TE TERMINAL	TE TERMINAL
60322-2			

WIRE SIZE	CRIMP HEIGHT mm [INCH]	CRIMP HEIGHT REFERENCE SETTING
16 AWG	1.47 +/- 0.05 [0.058 +/- .002]	8.0
18 AWG	1.35 +/- 0.05 [0.053 +/- .002]	8.8
20 AWG	1.27 +/- 0.05 [0.050 +/- .002]	9.4

- RECOMMENDED SPARE PARTS
- GREASE BEARING SURFACES LIGHTLY
- LUBRICATE DAILY PER THE APPLICATOR INSTRUCTION SHEET SUPPLIED WITH THE APPLICATOR.
- APPLICATOR SPECIFIC DATA TO BE ENTERED INTO BLANK MEMORY CHIP AT ASSEMBLY. SEE BELOW FOR PART NUMBER:
 MECHANICAL FEED WITH "SMART APPLICATOR" CONVERSION: 8-2150307-4
 PNEUMATIC FEED WITH "SMART APPLICATOR" CONVERSION: 8-2150307-4
 SERVO FEED WITH "FINE CRIMP HEIGHT ADJUST": 8-2150307-5
- ADJUSTMENT OF THE STRIPPER MAY BE REQUIRED WHEN MOVING THE APPLICATOR BETWEEN BENCH AND LEADMAKER APPLICATIONS.
- APPLY PART NUMBER 1-23419-5 LOCTITE TO THREADS OF ITEMS 50, 62 & 242.
- GREASE THREADS, GROOVE AND O-RING ON ITEMS 139 & 153.
- MAGNET, ITEM 166 MUST BE ORIENTED CORRECTLY IN ORDER TO PROPERLY ACTUATE THE COUNTER.
- CRIMP HEIGHT REFERENCE SETTING WAS THE SETTING USED WHEN THE APPLICATOR WAS QUALIFIED AT THE FACTORY. ADJUSTMENT MAY BE NECESSARY WHEN RUNNING APPLICATOR IN THE FIELD.
- SPARE FEED CAM STORAGE LOCATION REFER TO INSTRUCTION SHEET FOR ADDITIONAL INFORMATION.
- THE RECOMMENDED SET-UP FOR END FEED APPLICATORS IS POST-FEED WITH ITEM 2119653-1. THE APPLICATOR CAN BE CONFIGURED FOR PRE-FEED WITH ITEM 2119652-1 BUT MAY ENCOUNTER PROBLEMS WITH SOME APPLICATIONS. FEED ISSUES OR TERMINAL JAMMING MAY OCCUR IN THE PRE-FEED CONFIGURATION.

***WARNING**
 ON INSTALLATION, SET WIRE DISC, ITEM 40 TO LARGEST WIRE SIZE SETTING. USE OF SETTINGS BELOW MINIMUM REQUIRED CRIMP HEIGHT SETTING WILL CAUSE DAMAGE TO CRIMP TOOLING.

ITEM NO	DESCRIPTION	ITEM NO
251	FINE ADJUST HEAD ASM, PACIFIC STYLE	251
250	PUSH ROD, AIR FEED	250
249	BUSHING, LCH5-12, MISUMI	249
246	SPRING, COMPRESSION	246
-77-27-25-22-21	PART NO	DESCRIPTION

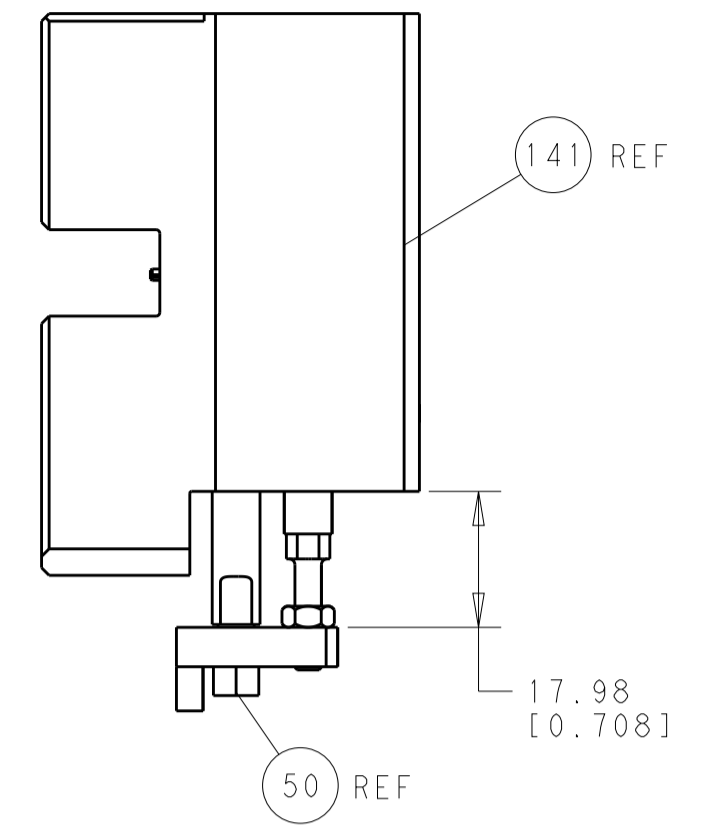
PACIFIC VERSION
 Shown on sheets 3 of 4 & 4 of 4
 (Atlantic version shown on sheets 1 of 4 & 2 of 4)

LOC	DIST	REVISIONS
A	66	
DATE	BY	APPV

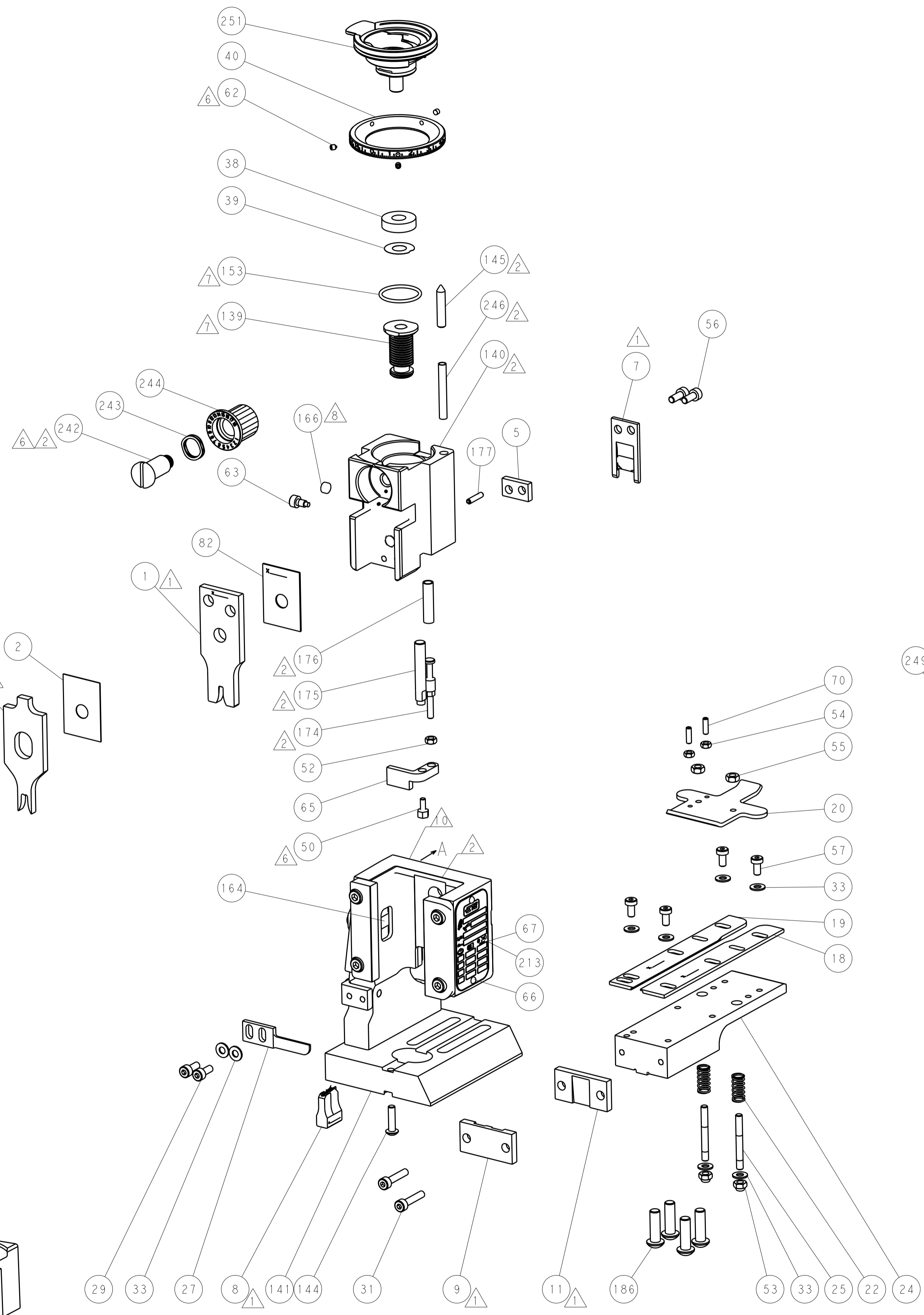
QTY	DESCRIPTION	DATE	OWN	APPV
-	SEE SHEET 1	-	-	-
-	1 1 1 1	2119082-9	CAM, SNAIL, INSULATION ADJUSTMENT	244
-	1 1 1 1	2079764-1	WASHER, WAVE SPRING, CREST-TO-CREST	243
-	1 1 1 1	2119083-1	RETAINER, INSULATION DIAL	242
-	2 - - -	2168400-7	SHCS, LOW HEAD, RoHS, M5 X 10	240
-	- - - 1	2119580-1	MECHANICAL FEED ASSEMBLY	239
-	- - - 1	2063440-1	AIR FEED MODULE	238
-	- 1 - -	2119740-2	TAG, IDENTIFICATION	213
-	4 4 4 4	2079383-9	SCR, BHSC, RoHS (M6 X 20)	186
-	- REF - -	1901697-1	FEED FINGER ASSEMBLY, EF	183
-	1 1 1 1	6-993111-6	PIN, SLOTTED SPRING 3.0 X 14.0	177
-	1 1 1 1	8-22280-7	SPRING, COMPRESSION	176
-	1 1 1 1	1752353-2	GUIDE PIN, HOLDDOWN	175
-	1 1 1 1	1901680-2	GUIDE PIN, HOLDDOWN	174
-	- - 2 -	21045-3	RING, RETAIN, EXTERN, 3/16 CRESCENT	172
-	1 1 1 1	994969-1	MAGNET, RARE EARTH HIGH ENERGY	166
-	REF REF REF REF	994970-2	COUNTER, MAGNETIC	164
-	- - 1 -	240638-1	SPRING, FEED FINGER	163
-	1 1 1 1	8-21084-1	O-RING, .801 ID, .070 DIA. MAT.	153
-	- - 1 -	2119641-2	FEED CAM, AIR FEED	152
-	1 1 1 1	2119798-2	DETENT PIN	145
-	1 1 1 1	2079383-8	SCR, BHSC, RoHS (M4 X 16)	144
-	- - - 1	2119653-2	FEED CAM, POST FEED	142
-	1 1 1 1	2119655-6	APPLICATOR BASIC ASSEMBLY, EF	141
-	1 1 1 1	2119651-1	RAM, ASIAN STYLE, END FEED	140
-	1 1 1 1	2119092-2	BOLT, ADJUSTMENT	139
-	- - 1 -	3-23627-7	PIN, RETAIN, GRVD, 3/16 X .854	137
-	- REF - -	SEE NOTE 4	MEMORY CHIP, PROGRAMMED	135
-	- 1 - -	1633743-1	SERVO FEED LATCH ASM	133
-	1 1 1 1	455888-6	SPACER, CRIMPER	82
-	1 1 1 1	2119956-2	DOCUMENTATION PACKAGE	71
-	2 2 2 2	2-18032-2	SCR, SET, FLT POINT M3 X 10.0	70
-	1 - 1 1	2119740-1	TAG, IDENTIFICATION	67
-	2 2 2 2	2168078-1	SCREW, DRIVE, RH, RoHS, 2 x .188	66
-	1 1 1 1	1-1901681-8	HOLDDOWN, TERMINAL	65
-	1 1 1 1	2119793-1	LIMITER, ADJUSTMENT BOLT	63
-	3 3 3 3	992763-5	SCR, SET, SOC, CONE POINT, M3 x 4.0	62
-	- - - 1	5-18022-5	SCR, HEX HD CAP, M4 X 6.0	59
-	- - - 1	2063961-1	FEED FINGER	58
-	4 4 4 4	2168400-4	SHCS, LOW HEAD, RoHS, M4 X 8	57
-	2 2 2 2	1-2168083-0	SCR, SKT HD CAP, RoHS, M4 X 10	56
-	2 2 2 2	5018030-2	NUT, HEX, REG, RoHS, M4	55
-	2 2 2 2	5018030-1	NUT, HEX, REG, RoHS, M3	54
-	2 2 2 2	986965-8	NUT, LOCK, HEX, TORQUE (M4)	53
-	1 1 1 1	1-5018030-0	NUT, HEX, REG, RoHS, M3.5	52
-	- - 1 -	2119792-2	PAWL, EF, AIR	51
-	1 1 1 1	4-1752354-1	STANDOFF, HOLD-DOWN	50
-	- - 1 2	18023-9	SCR, SKT HD CAP M4 X 6.0	49
-	- - - 1	2119652-1	FEED CAM, PRE FEED	48
-	1 1 1 1	2079383-7	SCR, BHSC, RoHS (M8 X 25)	41
-	1 1 1 1	2119645-1	DISC, NUMBERED FA WIRE ADJUSTMENT	40
-	1 1 1 1	2119957-1	APPLICATOR SHIM PACK	39
-	1 1 1 1	1-2119644-2	RAM WASHER, PRECISION	38
-	8 8 8 8	1-18028-2	WASHER, FLAT, REG M4	33
-	2 2 2 2	2168083-9	SCR, SKT HD CAP, RoHS, M4 X 20	31
-	2 2 2 2	1-2168083-0	SCR, SKT HD CAP, RoHS, M4 X 10	29
-	1 1 1 1	240639-4	STRIPPER (MACHINING)	27
-	2 2 2 2	1320906-1	STUD, THREADED	25
-	1 1 1 1	1752371-1	PLATE, STRIP GUIDE	24
-	2 2 2 2	2-22281-3	SPRING, COMPRESSION	22
-	1 1 1 1	1752373-4	DRAG	20
-	1 1 1 1	1901696-3	STRIP GUIDE, REAR	19
-	1 1 1 1	1901695-3	STRIP GUIDE, FRONT	18
-	1 1 1 1	240644-1	PLATE, REAR SHEAR	11
-	- - - -	-	-	10
-	1 1 1 1	690482-5	PLATE, FRONT SHEAR	9
-	1 1 1 1	1803064-1	ANVIL, COMBINATION	8
-	1 1 1 1	2217206-7	BLADE, SLUG	7
-	- - - -	-	-	6
-	1 1 1 1	4-240641-1	SPACER	5
-	1 1 1 1	3-238009-8	BLOCK, FL CRIMPER SPACER	4
-	1 1 1 1	7-1633961-2	CRIMPER, INSULATION F PREMIUM	3
-	1 1 1 1	455888-3	SPACER, CRIMPER	2
-	1 1 1 1	456408-9	CRIMPER, WIRE PREMIUM	1
-77-27-25-22-21	PART NO	DESCRIPTION	ITEM NO	

DIMENSIONS: mm		TOLERANCES UNLESS OTHERWISE SPECIFIED:		DRAWN: H. HUANG 09JAN2013		CHK: S. XI 09JAN2013	
0 PLC ±.5		1 PLC ±.3		APVD: S. XI 09JAN2013		NAME: Ocean End Feed Applicator	
2 PLC ±.13		3 PLC ±.013		PRODUCT SPEC: -		SIZE: A	
4 PLC ±.0001		ANGLES ±.0001		APPLICATION SPEC: -		CAGE CODE: 00779	
MATERIAL: -		FINISH: -		WEIGHT: -		DRAWING NO: 2150307	
Customer Accessible Production Drawing				SCALE: 1:1		SHEET 3 OF 4	

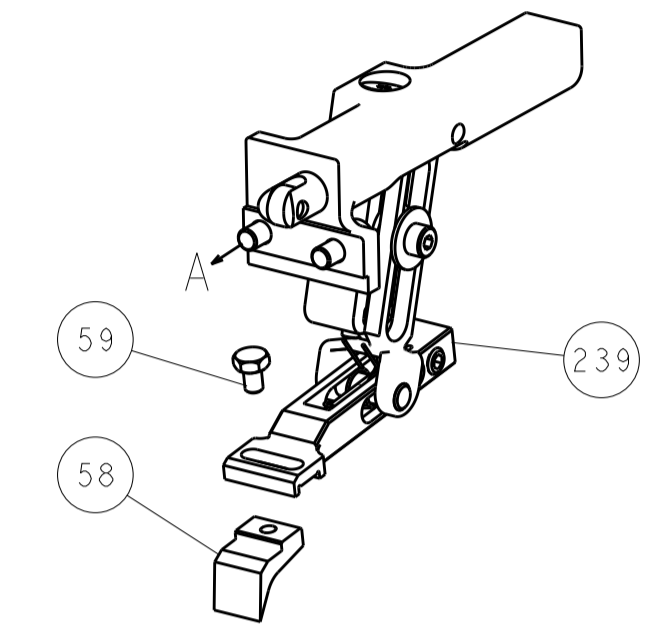
LOC		DIST		REVISIONS			
A	66	P	LTM	DESCRIPTION	DATE	DWN	APVD
		-	-	SEE SHEET 1	-	-	-



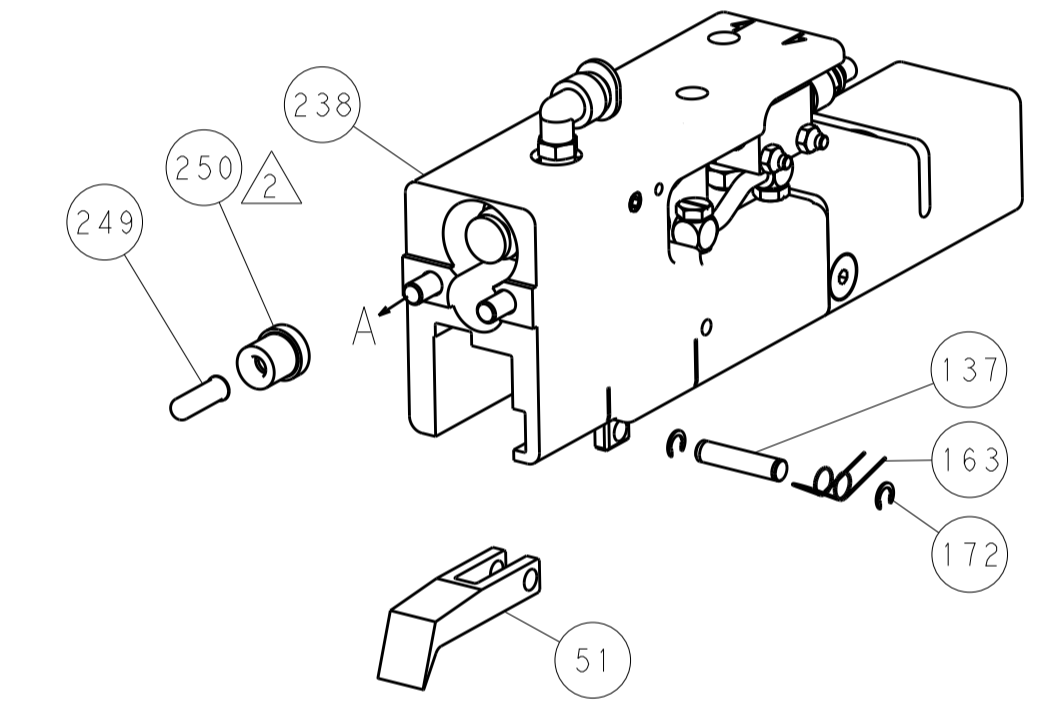
HOLDDOWN SET-UP



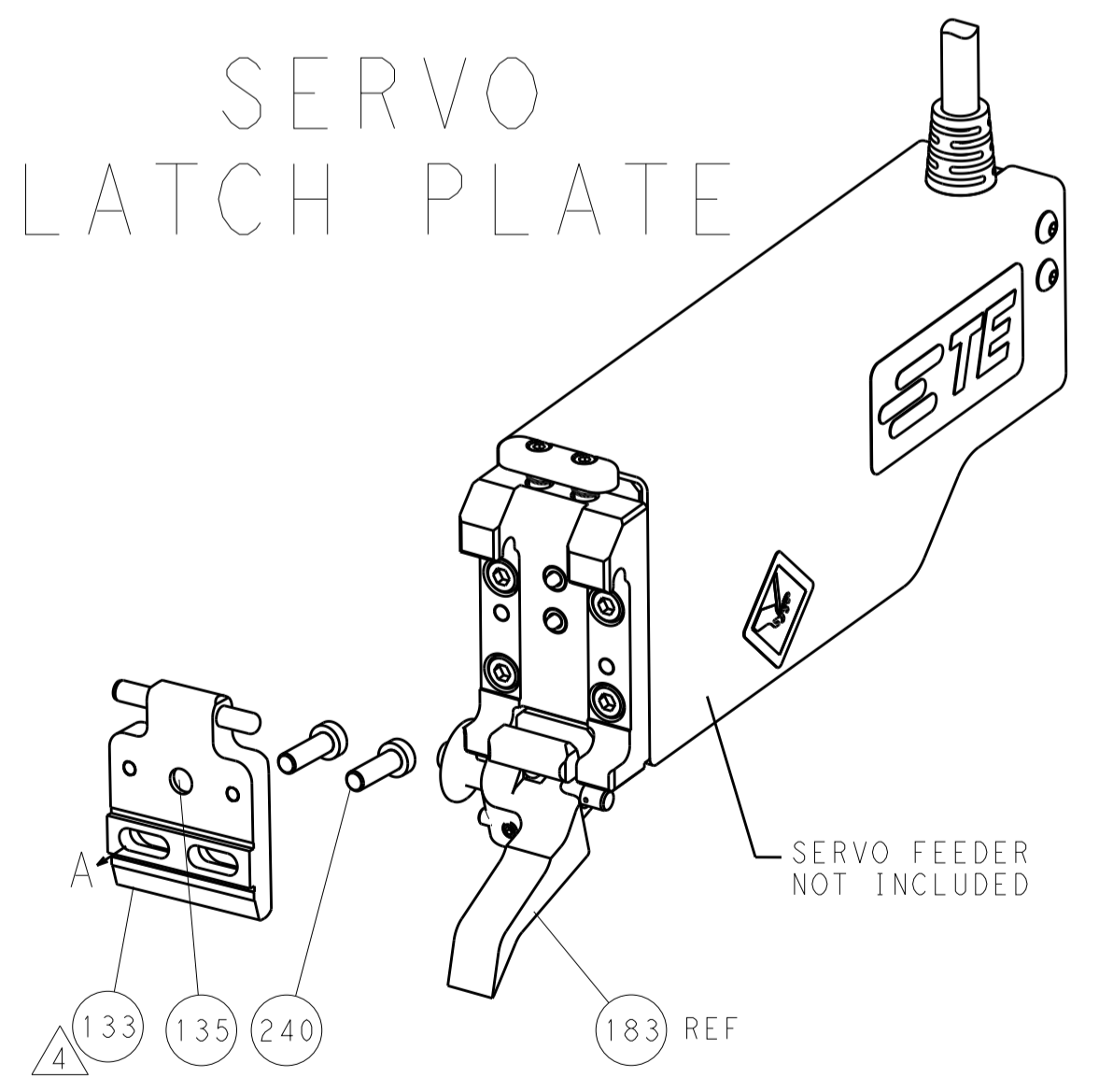
FEED TYPE
MECHANICAL



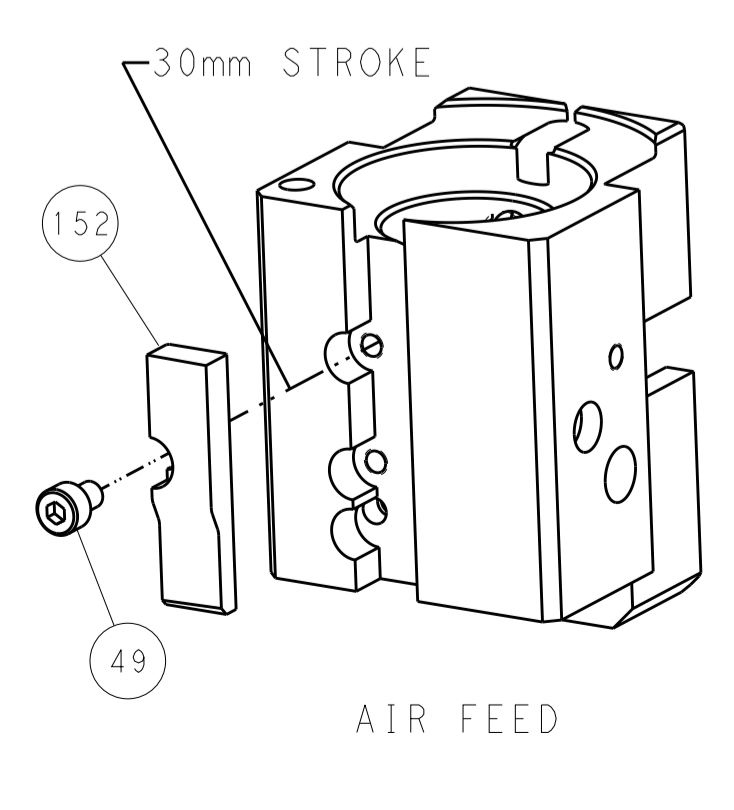
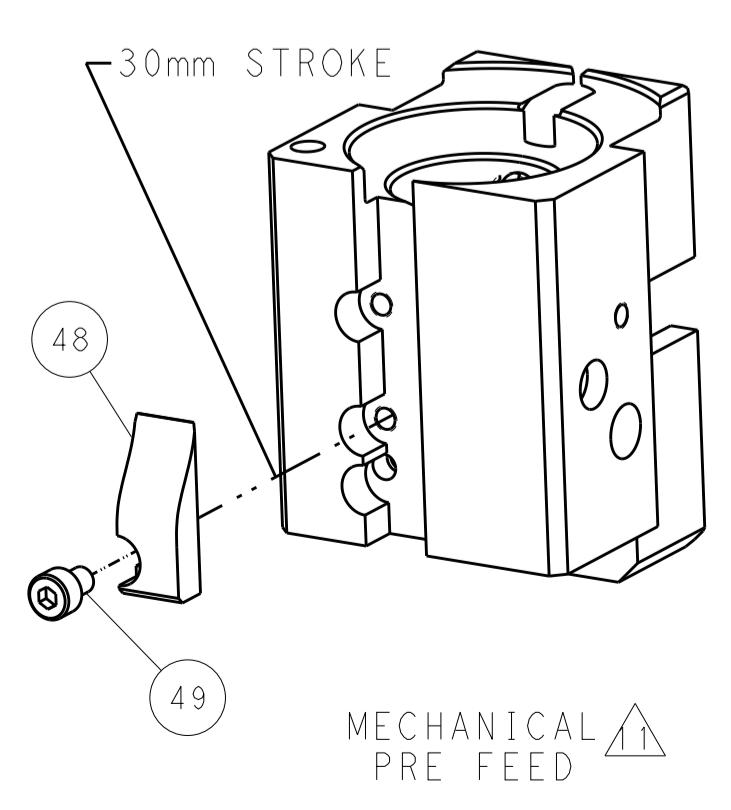
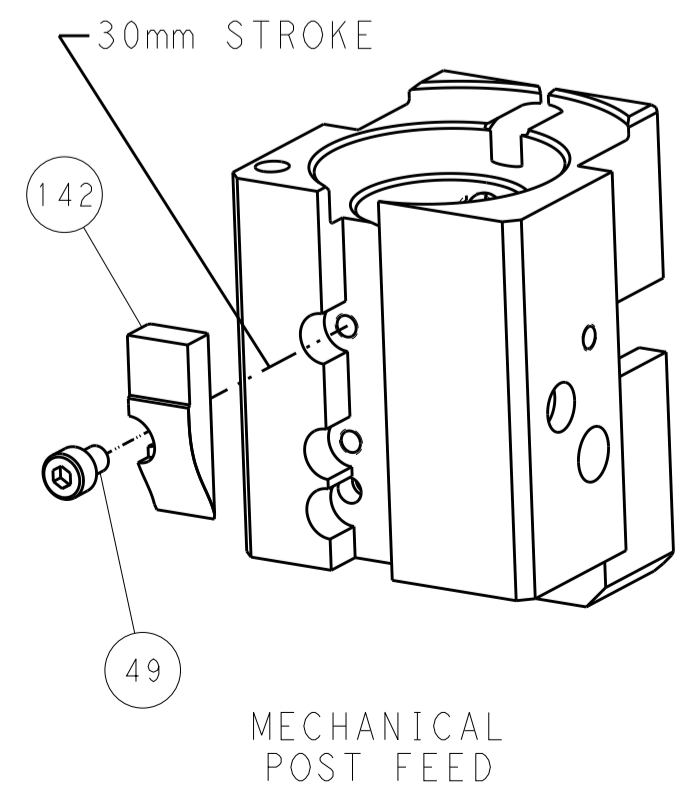
PNEUMATIC



SERVO
LATCH PLATE



CAM POSITIONS



PACIFIC VERSION
 Shown on sheets 3 of 4 & 4 of 4
 (Atlantic version shown on sheets 1 of 4 & 2 of 4)

DIMENSIONS:		TOLERANCES UNLESS OTHERWISE SPECIFIED:		DWN: H. HUANG 09JAN2013		CHK: S. XI 09JAN2013		APVD: S. XI 09JAN2013		NAME: Ocean End Feed Applier	
mm	0 PLC ±0.5	1 PLC ±0.5	2 PLC ±0.13	3 PLC ±0.013	4 PLC ±0.0013	ANGLES ±0.0013	PRODUCT SPEC		SIZE: CAGE CODE DRAWING NO		RESTRICTED TO
MATERIAL:	FINISH:		WEIGHT:		SCALE: 1:1		SHEET 4 OF 4		REV A		