

# Crystal filter

## QF 1.4-0030/08



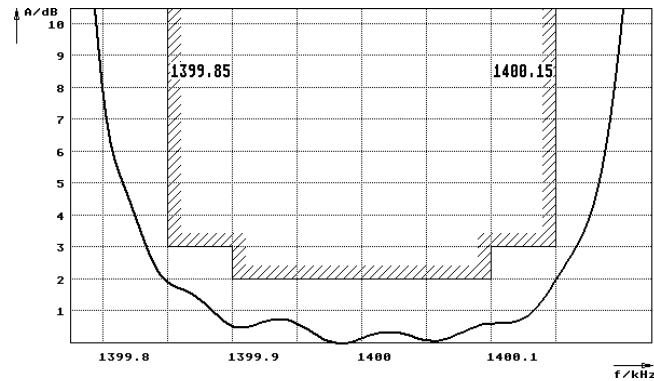
### Application

- 8 pol filter
- i.f.- filter
- use in mobile and stationary transceivers

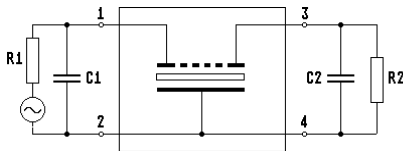
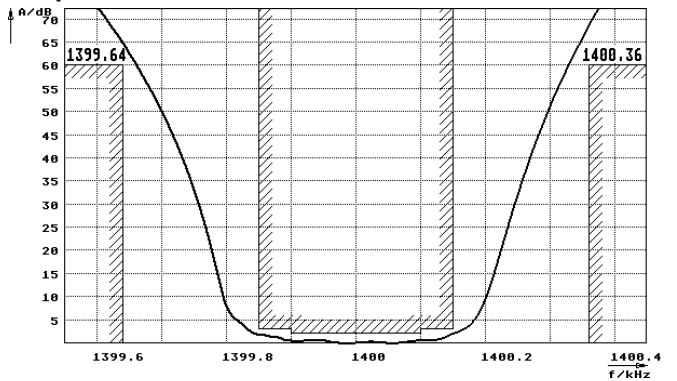
Limiting values		Unit	Value
Center frequency	$f_0$	MHz	1.4
Insertion loss		dB	$\leq 6.0$
Pass band at 3.0 dB		kHz	$\pm 0.15$
Ripple in pass band	$f_0 \pm 0.10$ kHz	dB	$\leq 2.0$
Stop band attenuation	$f_0 \pm .36$ kHz	dB	$\geq 60$
Alternate attenuation	1200...1399.64	dB	$> 60$
	1400.36...1460	dB	$> 60$
	1460...1580	dB	$> 50$
	1580...1600	dB	$> 40$
	$> 1600$	dB	$> 20$
Terminating impedance $Z$			
R1    C1		Ohm/pF	50    0
R2    C2		Ohm/pF	50    0
Operating temp. range		$^{\circ}\text{C}$	-10... +55

### Characteristics QF 1.4-0030/08

#### Pass band



#### Stop band



- Pin connections:
- 1 Input
  - 2 Ground-Input
  - 3 Output
  - 4 Ground-Output

