

SPECIFICATIONS

Rated(额定参数): 300V,1.5A
 Dielectric strength(抗电强度): AC2000V/1 Minute
 Insulation Resistance(绝缘电阻):1000MΩ Min
 Contact Resistance(接触电阻):20mΩ Max
 Temp. range(操作温度): -40℃~+105℃
 MAX Soldering(瞬时温度):+250℃,5s

Housing Material(塑件): PA66 (UL94 V-0)
 Contact(端子): Brass, Tin plating(黄铜镀锡)

	PITCH RANGE		NOMINAL DIMENSION RANGE					
	IN MM		IN MM		IN MM		IN MM	
TO	OVER	10	OVER	30	OVER	60	OVER	100
	TO	10	TO	30	TO	60	TO	100
6	OVER	24	OVER	60	OVER	100	OVER	150
	TO	24	TO	60	TO	100	TO	150
±0.10	±0.15	±0.25	±0.30	±0.30	±0.50	±0.70	±1.00	

Ordering Information

JL2EDGV-XXX XX G X 1

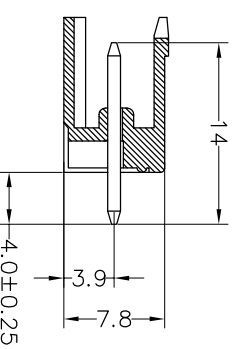
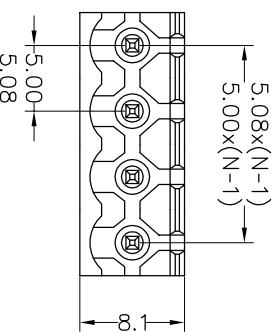
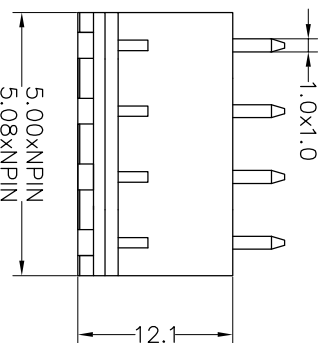
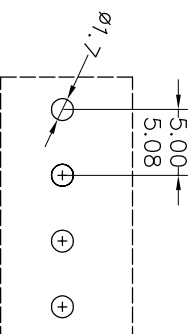
Pitch
 500=5.00PH
 508=5.08PH

No. of pins
 2P~24P

Housing Color
 B=Black
 G=Green
 U=Blue
 R=Red
 W=White
 Y=Yellow
 O=Orange
 E=Grey

Packing
 O=Pe bog
 A=Troy
 T=Tube

Recommended P.C.B Layout(Top Side)



REV	DATE	MODIFICATION DESCRIPTION	CHANGE	OPERATION		DRAW	BEN	17.01.05	SCALE	FIT	PART NO.	TITLE:
				ANGLE	TOL							
A0	2017.01.05	NEW DRAWING		X:XXX	±0.10	CHECK			A4	1/1	JL2EDGV-XXXXXXG1	5.00/5.08mm Pitch Male Plugable Terminal Blocks
1				XX	±0.20							

JILIN 深圳市锦凌电子有限公司
 SHENZHEN JINLING ELECTRONIC CO.,LTD
 Tel: 86-755-2997-5806/5802 Fax: 86-755-2997-5992