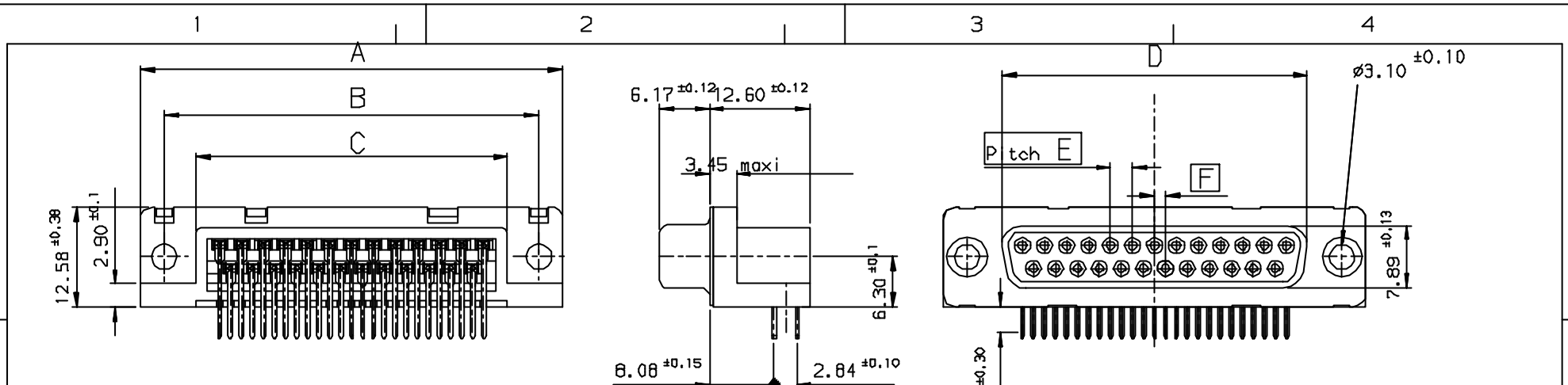


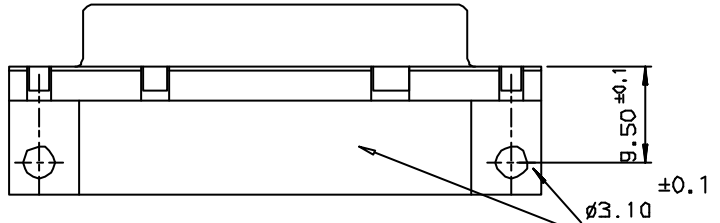
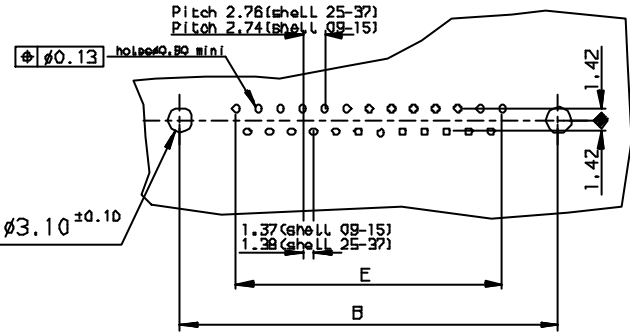
Tous droits réservés. Reproduction ou communication de ces plans interdite sans autorisation écrite de la Direction de l'Ingénierie. Droits de reproduction FCI.

FCI

All rights strictly reserved. Reproduction or use in third parties in any form without the prior written authorization of the manufacturer. Property of FCI. Copyright FCI.



PC card drilling dimensions (after plating)
(thickness 1.50±0.20mm)



Part Number & Date Code Printing

SHELL	A±0.38	B±0.12	C±0.10	D±0.25	E±0.07	PART NUMBER	PART NUMBER
09	30.81	24.99	16.96	16.21	10.96	D09S33E4PA00**	D09S33E6PA00**
15	39.14	33.32	25.18	24.54	19.18	D15S33E4PA00**	D15S33E6PA00**
25	53.03	47.04	39.12	38.25	33.12	D25S33E4PA00**	D25S33E6PA00**
37	69.32	63.50	55.68	54.71	49.68	D37S33E4PA00**	D37S33E6PA00**

Gold Flash 0,75 µ gold

LF FOR LEAD FREE

REQUIREMENTS

Technical characteristics:
 Shell: steel tin plated
 Insulators: self-extinguishing thermoplastic, UL class 94V0
 Contacts: phosphor bronze, gold (for thickness see table)
 over 2 µ mini nickel on active area and flash to 1.5 µ maxi SnPb
 over 1 µ mini nickel on termination.

Cycles: 200 min for plating 4.
 Cycles: 500 min for plating 6.

Electrical characteristics:

max. current rating: 5A
 Test voltage: 1000V
 Rated voltage: 300V
 Contact resistance: <15ma
 Shell resistance: <5ma
 Insulation resistance: >5000Ma

Climatic characteristics:

Operating temperature range: -55°C +125°C

Dimensions:

In accordance with MIL-C-24308

FOR ROHS DETAILS REFER DWG. NO. C01-8646-0000

Ltr	Ecn no	Dr	date
d	105-0124	JS	27/7/05

		✓ Tolerance LINEAR ±0.1 ANGULAR ±1°		Projection		MM	
Dr JOHN SLEEBA		24/10/89		Product Family D-SUB		Size A3	
Eng GEORGE VJ		24/10/89		Spec ref		Scale	
Chr GEORGE VJ		27/7/05		Material		ECN	
Appr K Somasundaram		27/7/05					
FCI		Title SOCKET CONNECT, DELTA D RIGHT ANGLED spill without accessories.		Dwg no C01-8646-0010		Rev. d	
Catalog no DELTA-D		CUSTOMER COPY		Sheet 1 of 1			

d	DATE	REVISION DESCRIPTION
d	27/7/05	LEAD FREE DETAILS ADDED