



## MAIN FEATURE

- 1 Pole and 2-Poles versions available with high switching current up to 30A.
- Plug-in Terminal with Flanged Case is available for customer's various applications.
- Both AC and DC coil available.
- LED version available.
- Touch Button and LED version available.
- Comply with RoHS and REACH regulations.

## CONTACT RATING

| Load Type                  | RP-2P        | RP-3P        | RPT (No Common) | RPT-2P             | RPT- 3P          |
|----------------------------|--------------|--------------|-----------------|--------------------|------------------|
| Rated Load (Resistive)     | 10A 240VAC   | 10A 240VAC   | 30A/28VDC       | 20A/15VDC          | 20A/15VDC        |
|                            | 13A 120VAC   | 13A 120VAC   | 30A/120VAC      | 13A/28VDC          | 13A/28VDC        |
|                            | 13A 28VDC    | 13A 28VDC    | 30A/240VAC      | 25A/120VAC         | 20A/120VAC       |
|                            | -            | -            | 10A/600VAC      | 25A/240VAC         | 15A/240VAC       |
|                            | -            | -            | -               | 5A/600VAC          | -                |
| Contact Capacity           | 1/2HP 240VAC | 1/2HP 240VAC | 1HP/120VAC      | 3/4HP/120VAC       | 1/2HP/120VAC     |
|                            | 1/3HP 120VAC | 1/3HP 120VAC | 1 HP/200~600VAC | 1HP/240/480/600VAC | 1/2HP/208/240VAC |
| Rated Carrying Current     | 13A          | 13A          | 30A             | 25A                | 20A              |
| Max. Allowable Voltage     | AC 300V      | AC 300V      | AC 600V         | AC 600V            | AC 300V          |
|                            | DC 48V       | DC 48V       | DC 28V          | DC 28V             | DC 28V           |
| Max. Allowable Current     | 13A          | 13A          | 30A             | 25A                | 20A              |
| Max. Allowable Power Force | 2,400VA      | 2,400VA      | 7,200VA         | 6,000VA            | 3,600VA          |
|                            | 364W         | 364W         | 840W            | 364W               | 364W             |
| Contact Material           | Ag Alloy     | Ag Alloy     | Ag Alloy        | Ag Alloy           | Ag Alloy         |
| Contact Form               | DPST, DPDT   | 3PST, 3PDT   | SPST, SPDT      | DPST, DPDT         | 3PST, 3PDT       |

## APPLICATION

Vending Machine, Cooking Appliances, Office Machine, Domestic Appliances, Control Equipment, etc

## PERFORMANCE (AT INITIAL VALUE)

- Contact Resistance ..... 100 mΩ Max. @1A,6VDC
- Operate Time ..... 15 mSec. Max.
- Release Time ..... 10 mSec. Max.
- Dielectric Strength:
  - Between Coil & Contact ..... 1,500VAC at 50/60 Hz for one minute
  - Between Contacts ..... 1,000VAC at 50/60 Hz for one minute
- Surge Strength ..... 1,500V (between Coil & Contact 1.2x50μSec.)
- Insulation Resistance ..... 100 MegaΩ Min. at 500VDC
- Max. On/Off Switching:
  - Electrical ..... 6 Cycles per Minute
  - Mechanical ..... 300 Cycles per Minute
- Temperature Range ..... -45~+70°C
- Humidity Range ..... 45~85% RH.
- Coil Temperature Rise ..... 50°C Max.
- Vibration:
  - Destruction ..... 10 to 55 to 10 Hz, 0.75 mm single amplitude (1.5mm double amplitude)
  - Malfunction ..... 10 to 55 to 10 Hz, 0.75 mm single amplitude (1.5mm double amplitude)
- Shock:
  - Destruction ..... 1,000 m/S<sup>2</sup>
  - Malfunction ..... 100 m/S<sup>2</sup>
- Life Expectancy:
  - Mechanical ..... 10<sup>7</sup> Operations at No Load condition
  - Electrical ..... 10<sup>5</sup> Operations at Rated Resistive Load
- Weight ..... About 85 g

## ACCESSORIES & SOCKETS

- PPF-11A/AE ..... See Page 170

## SAFETY STANDARD & FILE NUMBER

- RPT
- UL & C-UL ..... E175730
- RP
- NIL.

**COIL SPECIFICATION (AT 20 °C)**

| Coil Sensitivity            | Coil Voltage Code | Nominal Voltage (VAC/VDC) | Nominal Current (mA) |       | Coil Resistance (Ω±10%) | Power Consumption | Pull-In Voltage | Drop-Out Voltage | Max. Allowable Voltage |
|-----------------------------|-------------------|---------------------------|----------------------|-------|-------------------------|-------------------|-----------------|------------------|------------------------|
|                             |                   |                           | 50HZ                 | 60HZ  |                         |                   |                 |                  |                        |
| RP/RPT<br>1P, 2P<br>AC Coil | 01                | 6                         | 309.1                | 261.5 | 4.2                     | Abt. 2.9~3.5VA    | 85%<br>Maximum  | 30%<br>Minimum   | 110%<br>Maximum        |
|                             | 02                | 12                        | 200.2                | 169.4 | 18                      |                   |                 |                  |                        |
|                             | 03                | 24                        | 129.7                | 109.7 | 72                      |                   |                 |                  |                        |
|                             | 06                | 120                       | 28.0                 | 24.3  | 1,700                   |                   |                 |                  |                        |
|                             | 08                | 240                       | 13.2                 | 11.3  | 7,200                   |                   |                 |                  |                        |
| RP/RPT<br>3P<br>AC Coil     | 01                | 6                         | 371.4                | 317.3 | 3.2                     | Abt. 3.8~4.6VA    | 85%<br>Maximum  | 30%<br>Minimum   | 110%<br>Maximum        |
|                             | 02                | 12                        | 253.3                | 216.4 | 14                      |                   |                 |                  |                        |
|                             | 03                | 24                        | 172.8                | 147.6 | 55                      |                   |                 |                  |                        |
|                             | 05/06             | 120                       | 37.7                 | 32.0  | 1,300                   |                   |                 |                  |                        |
|                             | 08                | 240                       | 16.6                 | 13.9  | 5,510                   |                   |                 |                  |                        |
| RP/RPT<br>DC Coil           | 02                | 12                        | 100.0                |       | 120                     | Abt. 1.2 W        | 80%<br>Maximum  | 10%<br>Maximum   | 110%<br>Maximum        |
|                             | 03                | 24                        | 50.8                 |       | 472                     |                   |                 |                  |                        |
|                             | 04                | 48                        | 26.7                 |       | 1,800                   |                   |                 |                  |                        |
|                             | 05                | 110                       | 11.0                 |       | 10,000                  |                   |                 |                  |                        |
|                             | 06                | 120                       | 12.0                 |       | 10,000                  |                   |                 |                  |                        |

**ORDERING INFORMATION**

RPT - N 01 D M S F L T D

**Diode:** Nil: Without Diode

**D:** With Diode Selection

**Test Button:** Nil: Without Test Button

**T:** With Test Button

**LED:** Nil: Without LED

**L:** With LED Selection

**Case Type:** Nil: Standard Square Shape Case

**F:** Top with Flanged Case

**H:** Side with Flanged Case

**Terminal Type:** **S:** Quick Contact Tabs (width 4.80mm)

**W:** Quick Contact Tabs (width 6.50mm)

**Contact Form:** Nil: Form C

**M:** Form A

**B:** Form B

**Coil Type:** **D:** Standard DC

**A:** Standard AC

**Coil Code:** **01:** 6V, **02:** 12V, **03:** 24V, **04:** 48V,

**05:** 110V, **06:** 120V, **08:** 240V

**Number of Pole:** **1:** 1 Pole

**2:** 2 Poles

**3:** 3 Poles

**Type:** **RP**

**RPT**

## CLASSIFICATION

| Model           | RP/RPT  |  |  |
|-----------------|---|--|--|
| Coil Type       | AC  |  |  |
| Contact Form    | 1 Pole  | 2 Poles  | 3 Poles                                    |
| Number of Poles | 1A / 1B   | 2C / 2A / 2B   | 3C / 3A / 3B                               |
| Terminal Type   | RP(T)-N□□AS/AMS/ABS<br>RP(T)-N□□AW/AMW/ABW  | RP(T)-2□□AS/AMS/ABS<br>RP(T)-2□□AW/AMW/ABW               | RP(T)-3□□AS/AMS/ABS<br>RP(T)-3□□AW/AMW/ABW |
| Case Type       | RP(T)-N/2/3□□ASH/AMSH/ABSH<br>RP(T)-N/2/3□□ASF/AMSF/ABSF  | RP(T)-N/2/3□□AWH/AMWH/ABWH<br>RP(T)-N/2/3□□AWF/AMWF/ABWF |  |
| LED             | RP(T)-N/2/3□□ASFL/AMSFL/ABSFL<br>RP(T)-N/2/3□□AWFL/AMWFL/ABWFL  |  |  |
| Touch Button    | RP(T)-N/2/3□□ASLT/AMSLT/ABSLT<br>RP(T)-N/2/3□□ASFLT/AMSFLT/ABSFLT<br>RP(T)-N/2/3□□AWFLT/AMWFLT/ABWFLT |  |  |
| Diode           | RP(T)-N/2/3□□ASFLTD/AMSFLTD/ABSFLTD<br>RP(T)-N/2/3□□AWFLTD/AMWFLTD/ABWFLTD                            |  |  |

| Model           | RP/RPT   |   |                                      |
|-----------------|--|---|--------------------------------------|
| Coil Type       | DC   |   |                                      |
| Contact Form    | 1 Pole   | 2 Poles   | 3 Poles                              |
| Number of Poles | 1A / 1B  | 2C / 2A / 2B  | 3C / 3A / 3B                         |
| Terminal Type   | RP(T)-N□□DS/DMS/DBS<br>RP(T)-N□□DW/DMW/DBW   | RP(T)-2□□DS/DMS/DBS<br>RP(T)-2□□DW/DMW/DBW              | RP-3□□DS/DMS/DBS<br>RP-3□□DW/DMW/DBW |
| Case Type       | RP(T)-N/2/3□□DSH/DMSH/DBSH<br>RP(T)-N/2/3□□DSF/DMSF/DBSF   | RP(T)-N/2/3□□WH/DMWH/DBWH<br>RP(T)-N/2/3□□DWF/DMWF/DBWF |                                      |
| LED             | RP(T)-N/2/3□□DSFL/DMSFL/DBSFL<br>RP(T)-N/2/3□□DWFL/DMWFL/DBWFL   |   |                                      |
| Touch Button    | RP(T)-N/2/3□□DSLTD/DMSLTD/DBSLTD<br>RP(T)-N/2/3□□DSFLT/DMSFLT/DBSFLT<br>RP(T)-N/2/3□□DWFLT/DMWFLT/DBWFLT |   |                                      |
| Diode           | RP(T)-N/2/3□□DSFLTD/DMSFLTD/DBSFLTD<br>RP(T)-N/2/3□□DWFLTD/DMWFLTD/DBWFLTD                               |   |                                      |

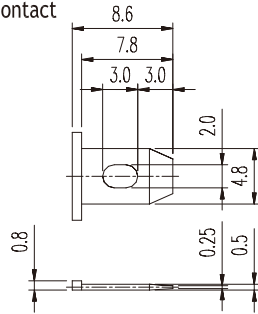
## ACCESSORIES & SOCKETS

### RP & RPT

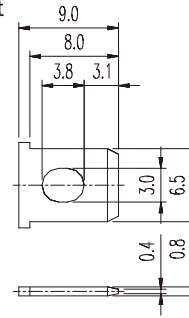
- PPF-11A .....See Page 170
- PPF-11AE .....See Page 170

**TERMINAL DIMENSIONS ( $\leq 5\text{mm} \pm 0.2\text{mm}$ ,  $> 5\text{mm} \pm 0.3\text{mm}$ , the tolerance of PCB thru hole:  $+0.1\text{mm}$ )**

**.189" (4.8mm)  
Quick Contact**

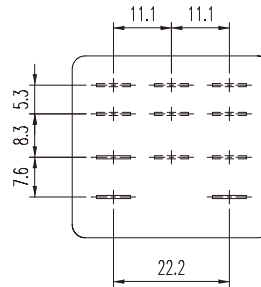
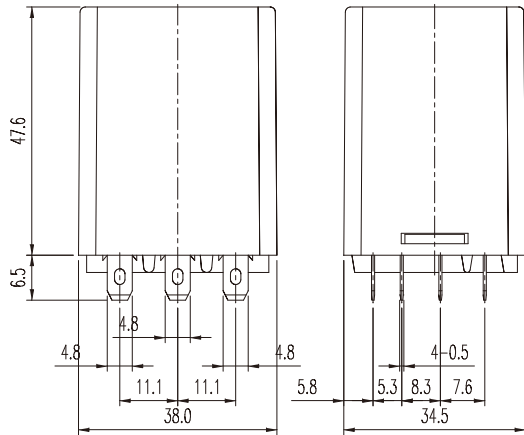


**.256" (6.5mm)  
Quick Contact**

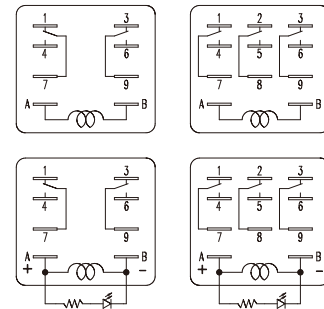


**DIMENSION ( $\leq 5\text{mm} \pm 0.2\text{mm}$ ,  $> 5\text{mm} \pm 0.3\text{mm}$ , the tolerance of PCB thru hole:  $+0.1\text{mm}$ )**

**RP**

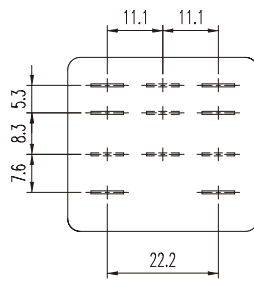
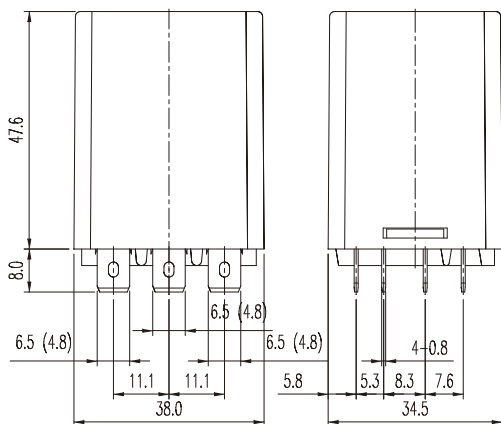


**P.C.B. Layout  
Bottom View**

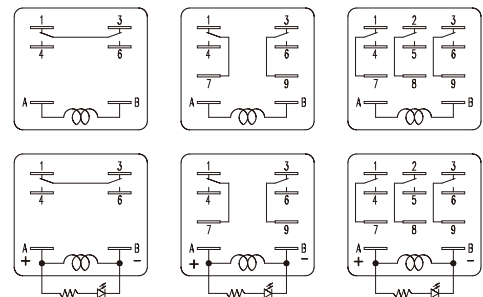


**Bottom View**

**RPT**



**P.C.B. Layout  
Bottom View**



**Bottom View**