



Data Sheet



Product Category: IF SAW Filter

Part Number
820-IF75.0M-A

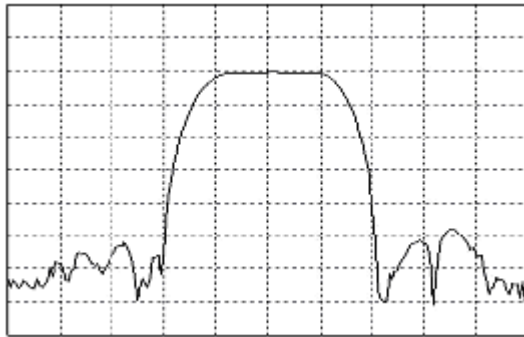
Application
Base Station & Repeater

Application
Base Station & Repeater

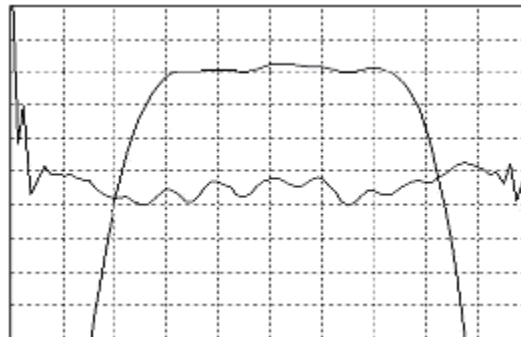
Last Modified
May 30 2003

TYPE :
75.0 MHz Bandpass Filter
1.1 MHz Bandwidth

PART NUMBER :
820-IF75.0M-A



Horizontal : 0.5 MHz/Div
Vertical : 10 dB/Div



Horizontal : 0.2 MHz/Div
Vertical : 1 dB/Div
Vertical : 100 ns/Div

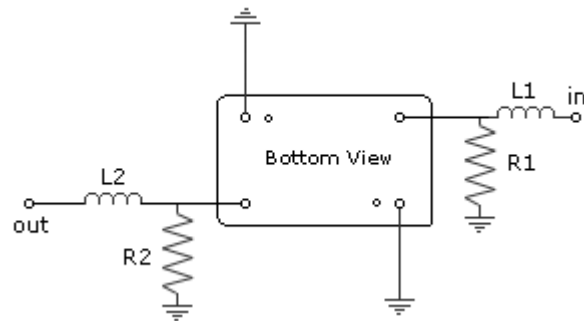
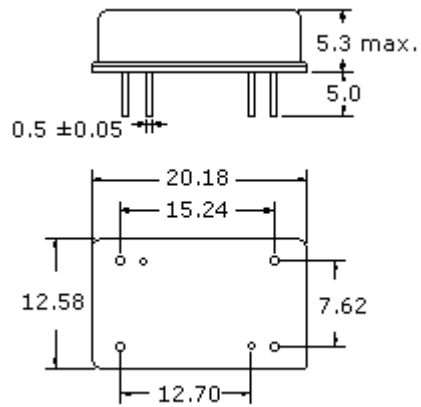
OPERATING CONDITIONS / ELECTRICAL CHARACTERISTICS

PARAMETERS	Minimum	Typical	Maximum	Units
Center Frequency	74.94	75.0	75.06	MHz
Insertion Loss	-	23.0	28.0	dB
1dB Bandwidth	0.91	1.0	-	MHz
3dB Bandwidth	1.1	1.2	-	MHz
40dB Bandwidth	-	1.95	2.0	MHz
Passband Ripple	-	0.4	0.8	dB
Group Delay Variation	-	100	150	nsec
Absolute Delay	-	2.6	-	µsec
Ultimate Rejection	40	50	-	dB
Substrate Material	-	Quartz	-	-
Ambient Temperature	-	25	-	°C

* Custom SAW IF Filters available. Contact Oscilent for assistance.

PACKAGE OUTLINE (mm)

TEST FIXTURE



L1 = 220nH

R1 = 1.0 kohm

L2 = 180nH

R2 = 1.0 kohm

Source/Load Impedance = 50 ohms

Part No.: 820-IF75.0M-A**Oscilent Corporation** - CALL **949.252.0522**17962 Sky Park Circle, Building D, Irvine, CA 92614, USA
Fax: 949.252.0599, E-Mail: Sales@Oscilent.com