

PLEASE CHECK WWW.MOLEX.COM FOR LATEST PART INFORMATION

Part Number: **0192150009**
Status: **Active**
Description: VersaKrimp™ Butt Splice for 18-22 AWG Wire

Documents:

[Drawing \(PDF\)](#) [RoHS Certificate of Compliance \(PDF\)](#)

Agency Certification

CSA LR18689
 UL E32244

General

Product Family Splices
 Series 19215
 Crimp Quality Equipment Yes
 Mil-Spec N/A
 Product Name Butt, VersaKrimp™

Physical

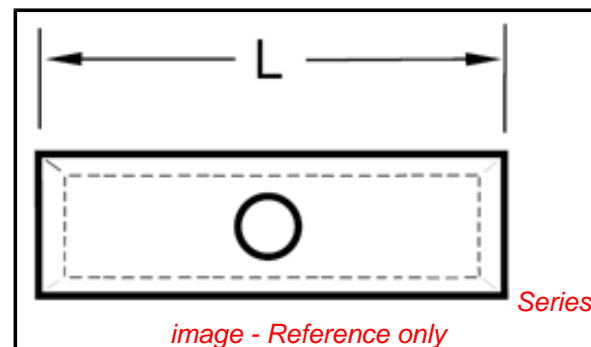
Barrel Type Closed - Brazed
 Insulation None
 Packaging Type Bag
 Temperature Range - Operating 149°C
 Wire Size AWG 18, 20, 22
 Wire Size mm² 0.35 - 0.80

Material Info

Old Part Number AS-345

Reference - Drawing Numbers

Sales Drawing SD-19215-001



EU RoHS

ELV and RoHS Compliant
REACH SVHC Contains SVHC: No
Halogen-Free Status

China RoHS



Need more information on product environmental compliance?

Email productcompliance@molex.com
 For a multiple part number RoHS Certificate of Compliance, [click here](#)

Please visit the [Contact Us](#) section for any non-product compliance questions.

Search Parts in this Series

19215Series

Application Tooling | FAQ

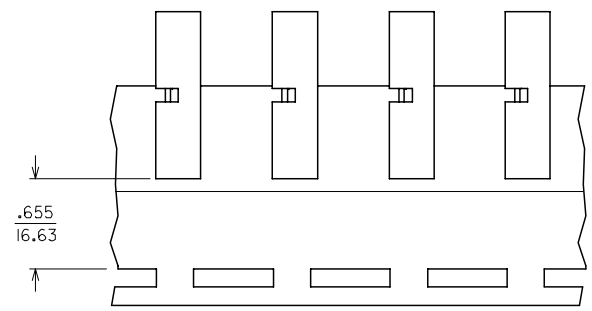
Tooling specifications and manuals are found by selecting the products below. Crimp Height Specifications are then contained in the Application Tooling Specification document.

Global

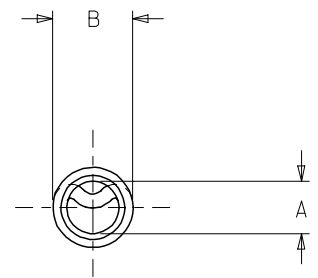
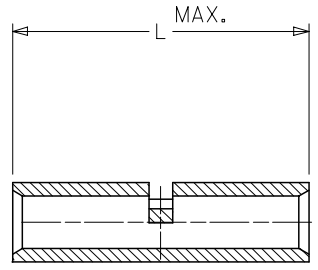
Description	Product #
Hand Crimp Tool	<u>0640030100</u>
Crimp Head for the AT-200™ Pneumatic Hand Tool	<u>0640070100</u>

10	9	8	7	6	
MATERIAL NUMBER	ALTERNATE NUMBER	"L" MAX	"A" MIN.	"B"	PACKAGING
192150009	AS-345	.675 (17.10)	.059 (1.50)	.130 (3.30)	LOOSE PIECE
192150007	AS-332	.605 (15.37)	.059 (1.50)	.130 (3.30)	
192150012	AS-348	.635 (16.13)	.059 (1.50)	.130 (3.30)	
192150011	AS-345T	.675 (17.10)	.059 (1.50)	.130 (3.30)	TAPE MOUNTED
192150248	AS-345US	.675 (17.10)	.059 (1.50)	.130 (3.30)	LOOSE PIECE
192150254	AS-345UST	.675 (17.10)	.059 (1.50)	.130 (3.30)	TAPE MOUNTED

ⓑ



PARTS ON TAPE



CUSTOMER DRAWING

NOTES:
 1. MATERIAL: COPPER.
 2. PLATING: ELECTRO-TIN.
 3. ALL DIMENSIONS IN INCHES/(MM).

REVISED / REDRAWN EC NO: ETC2005-0116 DRAWN: JLOMASTRO 2005/03/03 CHK'D: RDEROSS 2005/03/04 APPR: RDEROSS 2005/03/07	DESCRIPTION B	QUALITY SYMBOLS	GENERAL TOLERANCES (UNLESS SPECIFIED)	DIMENSION STYLE	SCALE	DESIGN UNITS	THIRD ANGLE PROJECTION																														
		$\nabla=0$ $\nabla=0$	<table border="1"> <thead> <tr> <th></th> <th>mm</th> <th>INCH</th> </tr> </thead> <tbody> <tr> <td>4 PLACES</td> <td>± ---</td> <td>± ---</td> </tr> <tr> <td>3 PLACES</td> <td>± ---</td> <td>± .005</td> </tr> <tr> <td>2 PLACES</td> <td>± 0.13</td> <td>± .01</td> </tr> <tr> <td>1 PLACE</td> <td>± 0.25</td> <td>± ---</td> </tr> </tbody> </table>		mm	INCH	4 PLACES	± ---	± ---	3 PLACES	± ---	± .005	2 PLACES	± 0.13	± .01	1 PLACE	± 0.25	± ---	IN/MM		INCH	<table border="1"> <tr> <td>DRAWN BY</td> <td>DATE</td> <td rowspan="2">TITLE</td> </tr> <tr> <td>JLOMASTRO</td> <td>05/01/07</td> </tr> <tr> <td>CHECKED BY</td> <td>DATE</td> <td rowspan="2"> BUTT CONNECTOR SEAMLESS 22-18 AWG WIRE SIZE </td> </tr> <tr> <td>RDEROSS</td> <td>05/01/07</td> </tr> <tr> <td>APPROVED BY</td> <td>DATE</td> <td rowspan="2"> MOLEX INCORPORATED </td> </tr> <tr> <td>RDEROSS</td> <td>05/01/07</td> </tr> </table>	DRAWN BY	DATE	TITLE	JLOMASTRO	05/01/07	CHECKED BY	DATE	BUTT CONNECTOR SEAMLESS 22-18 AWG WIRE SIZE	RDEROSS	05/01/07	APPROVED BY	DATE	MOLEX INCORPORATED	RDEROSS	05/01/07
			mm	INCH																																	
		4 PLACES	± ---	± ---																																	
3 PLACES	± ---	± .005																																			
2 PLACES	± 0.13	± .01																																			
1 PLACE	± 0.25	± ---																																			
DRAWN BY	DATE	TITLE																																			
JLOMASTRO	05/01/07																																				
CHECKED BY	DATE	BUTT CONNECTOR SEAMLESS 22-18 AWG WIRE SIZE																																			
RDEROSS	05/01/07																																				
APPROVED BY	DATE	MOLEX INCORPORATED																																			
RDEROSS	05/01/07																																				
		DRAFT WHERE APPLICABLE MUST REMAIN WITHIN DIMENSIONS	MATERIAL NO. SEE CHART	DOCUMENT NO. SD-19215-001	SHEET NO. 1 OF 1																																