



WWW.BARRYIND.COM

R1000-200-7X



BeO

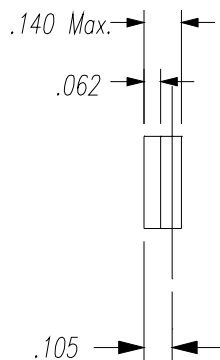
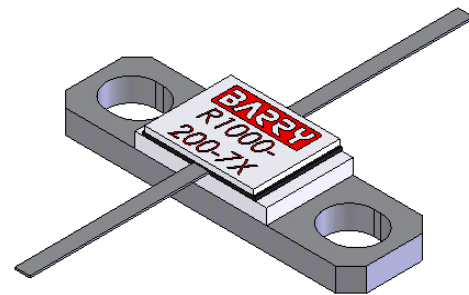
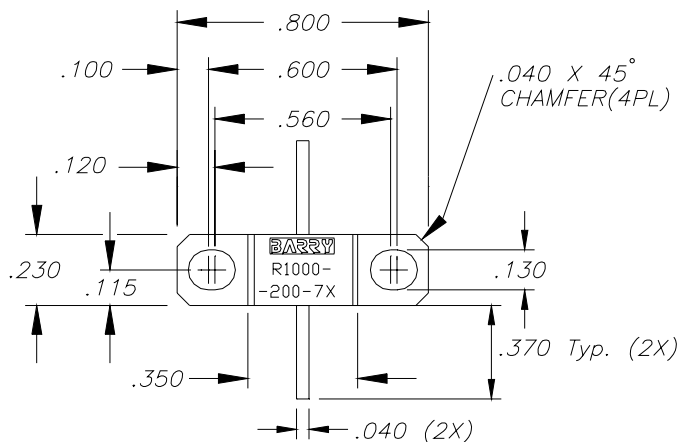
FLANGED RESISTOR

Features:

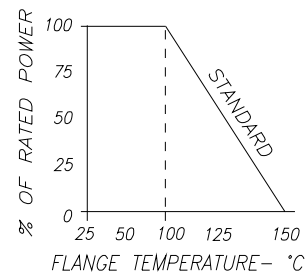
- ◆ BeO material
- ◆ 200 Watt power handling
- ◆ Flange mount

General Description:

The R1000-200-7X is a 100 Ohm BeO leaded resistor mounted onto a flange. It offers a power rating of 200 Watts max while maintaining a flange temperature of 100°C.



DERATING CURVE:



Parameter	Min.	Typ.	Max.	Units
Power			200	Watts
Resistance	95	100	105	Ohm
Capacitance (at 1 MHz)		2.15		pF
Flange Temperature			100	°C

* Barry Industries reserves the right to change part number and or process without notification

Barry Industries, Inc., 60 Walton St., Attleboro, MA 02703 T: 508-226-3350 F: 508-226-3317 E-mail: sales@barryind.com

Barry Industries maintains an ISO 9001 Certified Quality Management System

Origination Date	Revision Date	Rev.
03/05/07	03/26/07	A