

Features

- Ultra low leakage: nA level
- Operating voltage: 24V
- Low clamping voltage
- Complies with following standards:
 - IEC 61000-4-2 (ESD) immunity test
 - Air discharge: $\pm 30\text{kV}$
 - Contact discharge: $\pm 30\text{kV}$
 - IEC61000-4-4 (EFT) 40A (5/50ns)
 - IEC61000-4-5 (Lightning) 3A (8/20 μs)
- RoHS Compliant
- AEC-Q101 qualified

Applications

- all key interfaces in automotive
- CAN-FD
- LIN
- FlexRay
- MOST
- SENT

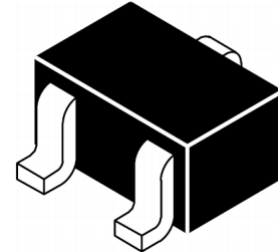
Mechanical Characteristics

- Package: SOT-323
- Lead Finish: Lead Free
- UL Flammability Classification Rating 94V-0
- Quantity Per Reel:3000pcs
- Reel Size:7 inch

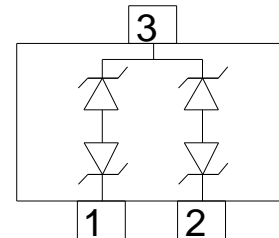
Absolute Maximum Ratings (T_{amb}=25°C unless otherwise specified)

Parameter	Symbol	Value	Unit
Peak Pulse Power (8/20 μs)	P _{pp}	200	W
ESD per IEC 61000-4-2 (Air)	V _{ESD}	± 30	Kv
ESD per IEC 61000-4-2 (Contact)		± 30	
Operating Temperature Range	T _J	-55 to +125	°C
Storage Temperature Range	T _{STJ}	-55 to +150	°C

Dimensions SOT-323



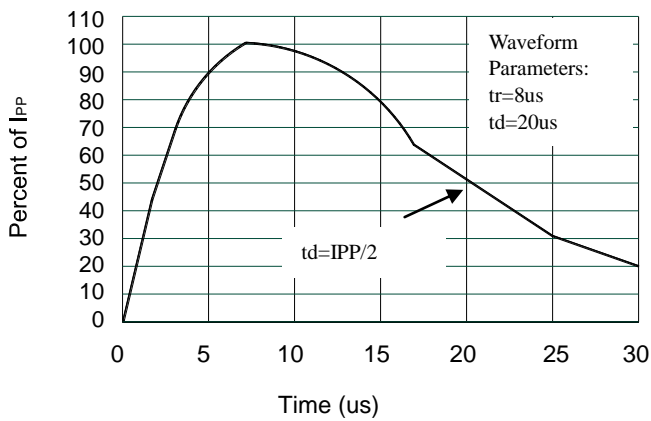
Pin Configuration



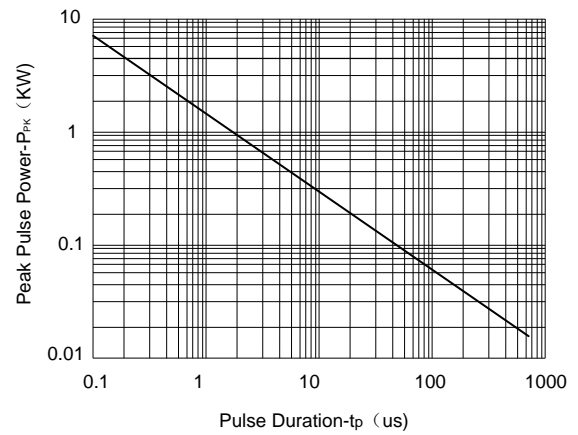
Electrical Characteristics(TA=25°C unless otherwise specified)

Part Number	Device Marking	V _{RWM} (V)	V _{BR} (V)	I _T (mA)	V _C @1A	V _C		I _R nA (Max)	C (Pf) (Typ.)
						(Max)	(@A)		
SMC24-323	C03	24	26.5	1	39	48	3	10	18

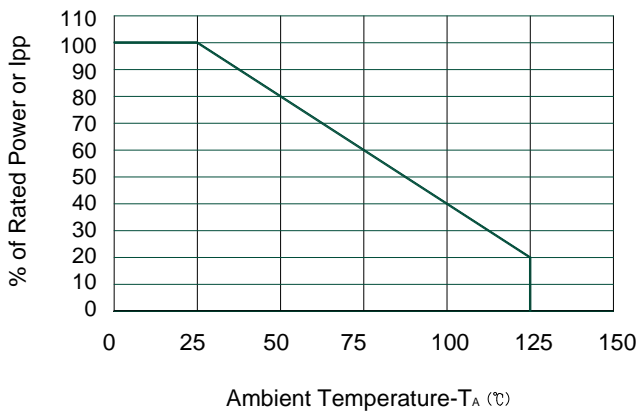
Characteristic Curves



Pulse Waveform



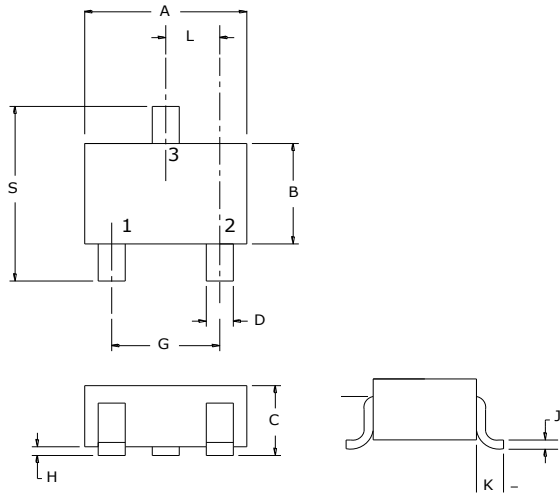
Non-Repetitive Peak Pulse Power vs. Pulse Time



Power Derating Curve

SOT-323 Package Outline & Dimensions

- Case: SOT323
- Case Material: Molded Plastic. UL Flammability



Dim	Millimeters	
	Min	Max
A	2.00	2.20
B	1.15	1.35
C	0.90	1.10
D	0.2	0.4
G	1.20	1.40
H	0.00	0.10
J	0.08	0.15
K	0.525REF	
L	0.650TYP	
S	2.15	2.45

