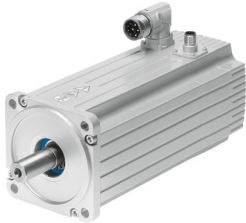


Servo motor EMMS-AS-100-MK-HS-RM

Part number: 560896

FESTO



Data sheet

Feature	Value
Number of pole pairs	6
Type code	EMMS-AS
Rotor position sensor	Absolute encoder, multi-turn
Rotor position sensor interface	EnDat® 22
Rotor position sensor measuring principle	Inductive
Temperature monitoring	PTC resistor
Max. rotational speed	4030 1/min
Nominal rotary speed	3400 1/min
Insulation protection class	F
Motor constants	1.652 Nm/A
Motor nominal power	2000 W
DC nominal voltage	565 V
Motor nominal current	3.4 A
Rotor position sensor resolution	19 bit
Phase-phase winding resistance	3.25 Ohm
Winding inductance phase-phase	12.3 mH
Type of winding switch	Star inside
Peak current	15 A
Voltage constant, phase-to-phase	99.15 mVmin
Rating class according to EN 60034-1	S1
CE marking (see declaration of conformity)	As per EU EMC directive As per EU low voltage directive
Corrosion resistance class (CRC)	2 - Moderate corrosion stress
Storage temperature	-20 °C ... 60 °C
Relative air humidity	0 - 90 %
Degree of protection	IP54
Ambient temperature	-10 °C ... 40 °C
Certification	RCM compliance mark c UL us - Recognized (OL)
Total output inertia moment	4.729 kgcm ²
Nominal torque	5.69 Nm
Peak torque	22.1 Nm
Stall torque	8.09 Nm
Permissible axial shaft load	150 N
Permissible radial shaft load	570 N
MTTF, subcomponent	76 years, rotor position sensor

Feature	Value
MTTFd, subcomponent	152 years, rotor position sensor
Product weight	6900 g
Electrical connection technology	Plug
Note on materials	RoHS-compliant
Conforms to standard	IEC 60034
Featherkey shaft design	DIN 6885 A 6 x 6 x 32