

SD

7410-15

REVISIONS

ISSUE	CHANGES
0	ER 38526 HVN 03/19/02

7410-15S

SCALE 3:1

APPROX SURFACE AREA

USED ON

REF:

PATCH PLUG, 440

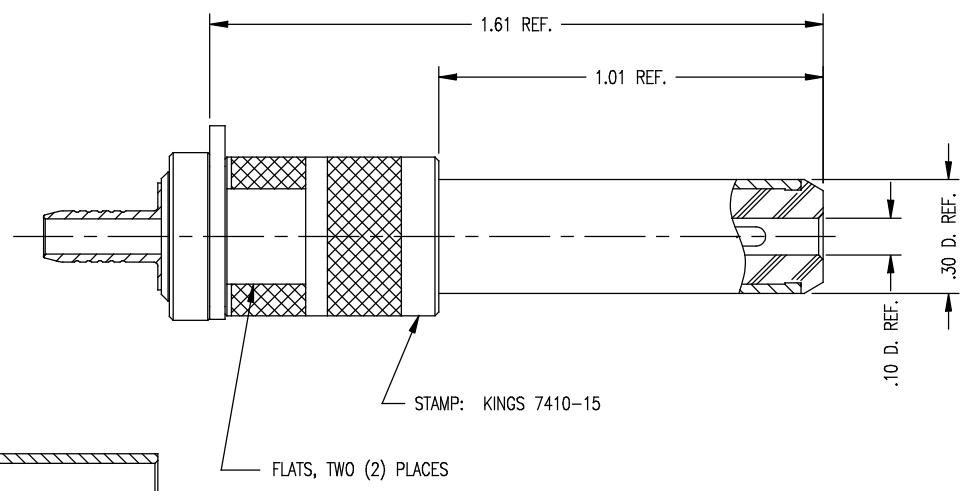
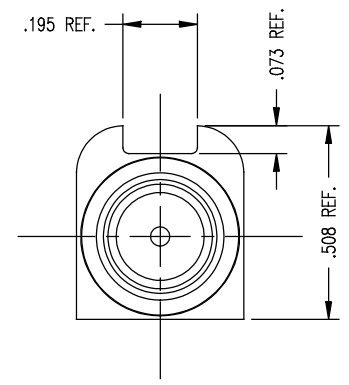
DRAWN HVN DATE 03/19/02

DESIGN HVN DATE 03/19/02

APPR. LI DATE 03/19/02

KINGS
ELECTRONICS CO., INC.
ROCK HILL, SOUTH CAROLINA 29730

7410-15



- NOTES:
1. FOR USE WITH TYPE 735 CABLE.
 2. FOR CRIMPING USE DIE KTH-2185.
 3. FOR CABLING INSTRUCTIONS SEE 3-682 (BULK PACKAGING) OR 3-680 (BAG PACKAGING)
 4. CENTER CONTACT AND KGRIP SLEEVE TO BE SUPPLIED UNASSEMBLED.
 5. MATERIALS:
INSULATOR-TEFLON.
K-GRIP SLEEVE-COMMERCIAL BRONZE.
ALL OTHER METAL PARTS-BRASS.
 6. FINISHES:
CENTER CONTACT-GOLD PLATE.
ALL OTHER METAL PARTS-NICKEL PLATE.
 7. ELECTRICAL CHARACTERISTICS:
NOMINAL IMPEDANCE -75 OHMS
WORKING VOLTAGE-500 VRMS
FREQUENCY RANGE-DC TO 750 MHz

SD