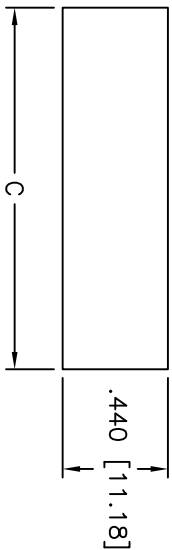
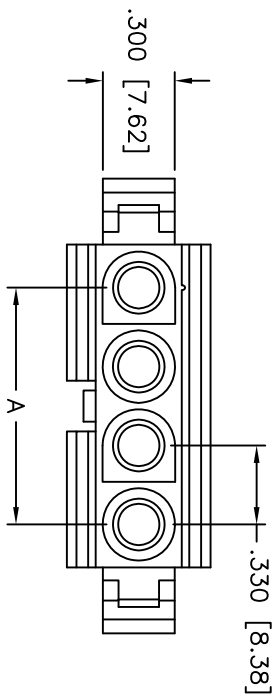


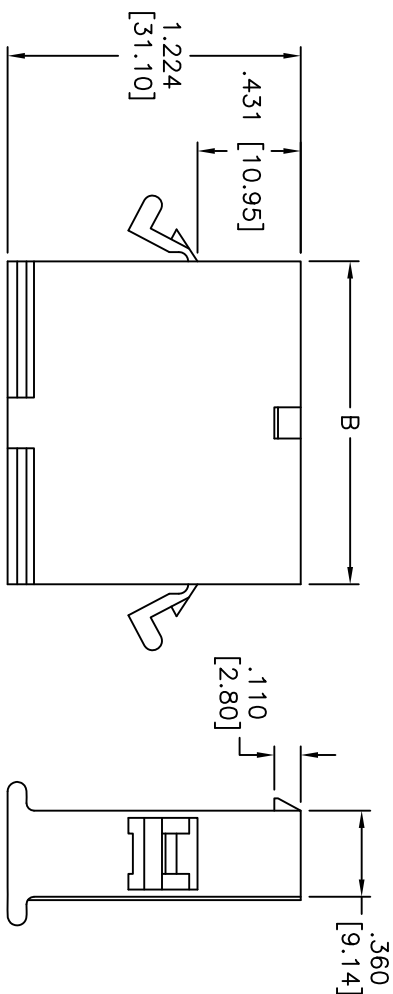
Rev	AWO #	Description	Date	Appr
-		RELEASED	8/20/10	

APPROVED: _____

DATE: _____ TITLE: _____



RECOMMENDED PANEL HOLE CUTOUT



POSITIONS	Dimension		
	A	B	C
1	N/A	.360 [9.14]	.521 [13.23]
2	.330 [8.38]	.690 [17.52]	.851 [21.62]
3	.660 [16.76]	1.020 [25.90]	1.181 [30.00]
4	.990 [25.14]	1.350 [34.28]	1.511 [38.38]

SPECIFICATIONS:

Material: Insulator: Thermoplastic, rated UL 94V-2
 Insulator color: Natural
 Recommended panel thickness: .090" [2.29mm] Max.
 Electrical: Current rating: 20A Max.
 Voltage rating: 600V
 Dielectric withstanding voltage: 1500V AC/minute
 Temperature range: -40°C to +105°C
 Environmental: Lead free, RoHS compliant.



UNLESS OTHERWISE SPECIFIED
 ALL DIMENSIONS ARE INCHES [MM]
 TOLERANCES: EXCEPT AS NOTED
 INCHES HOLEES [MM]
 .X ± .10 ØXX ± .10
 .XX ± .020 ØXXX ± .015
 .XXX ± .015 ØXXXX ± .010

ADAM TECH
 909 Railway Avenue, Union, NJ 07083
 Phone: 908-687-5000 Fax: 908-687-5710

TITLE: .125" [3.18mm] DIAMETER HOUSING, FEMALE, W/ EAR

DRAWN	DY	8/20/10
CHECKED		
APPROVED		

SIZE	PART NO.	REV.
X	DMO-F-XX-E	
REF: S0072T	SCALE: NTS	SHEET 1 OF 1