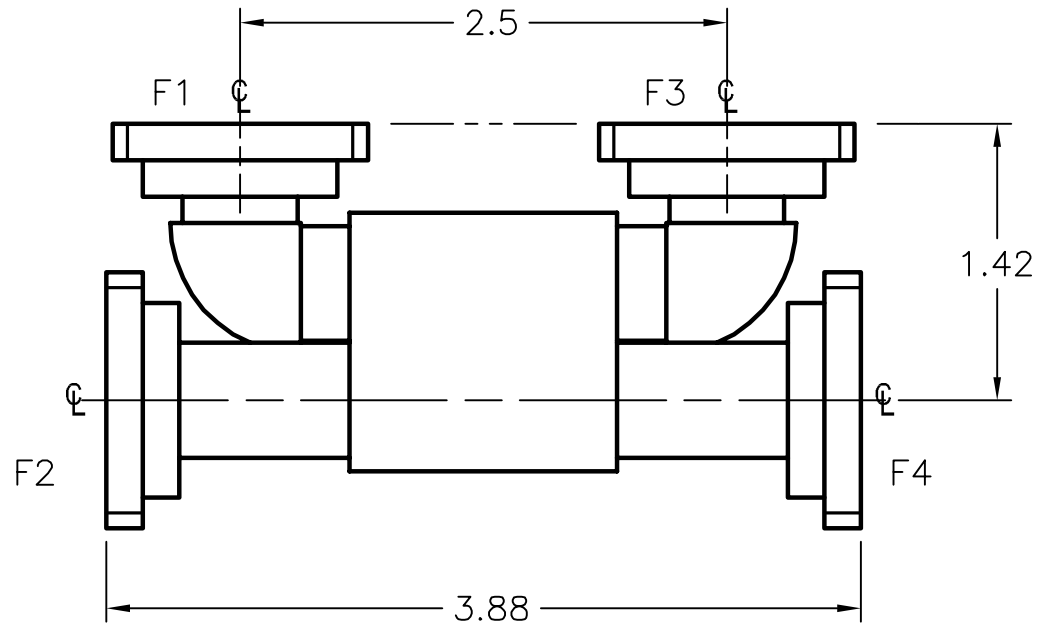


REV <b>A</b>	AUTH <b>JLE</b>	DATE <b>10/17/02</b>	INITIAL RELEASE
REV <b>B</b>	AUTH <b>RL</b>	DATE <b>10/23/06</b>	NOTES, TOLERANCES CORRECTED; FORMAT UPDATE.



FREQUENCY	MODEL
15.5–17.5 GHz	51–261A–Z–X–X–X–X
17.35–19.65 GHz	51–262A–Z–X–X–X–X

*ATM MODEL # DESIGNATION FOR COMMON FLANGE TYPES
6 = UG COVER
7 = UG CHOKE
8 = COVER–GROOVE

THIRD ANGLE PROJECTION:		APPROVALS	DATE	<b>ADVANCED TECHNICAL MATERIALS, INC.</b> TEL: (631) 289-0363 FAX: (631) 289-0358 www.atmmicrowave.com	THE INFORMATION IN THIS DRAWING IS PROPRIETARY AND SHALL NOT BE USED OR DISCLOSED WITHOUT THE PRIOR WRITTEN CONSENT OF ATM, INC. DO NOT SCALE DWGS.		
UNLESS OTHERWISE NOTED, DIMENSIONS ARE IN INCHES, TOLERANCES ARE: FRACTIONS: ±1/64 ANGLES: ±1/2°		DRAWN <b>JLE</b>	<b>10/17/02</b>				
BASIC DIMENSION	DECIMALS 2 PLACE    3 PLACE	APRVD.		<b>OUTLINE, WR51 HYBRID COUPLER (COMBINER–DIVIDER)</b>			
UNDER 6"	<b>±.02    ±.005</b>	MATERIAL <b>PER ORDER</b>					
6" – 12"	<b>±.03    ±.010</b>	TREATMENT <b>-</b>					
OVER 12"	<b>±.06    ±.015</b>	FINISH <b>-</b>		SIZE <b>A</b>	CAGE CODE 0R8N4	ATM DWG # <b>5232W</b>	REVISION <b>B</b>
				SCALE <b>1 : 1</b>	MODEL # <b>51–26XZ–XX–F1–F2–F3–F4</b>	SHEET <b>1/1</b>	