



# Series 6556 Universal Test Socket Receptacle

## FEATURES

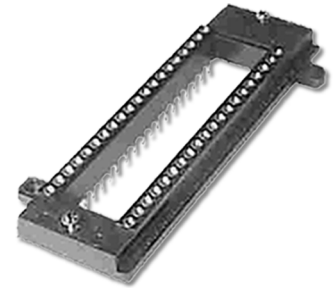
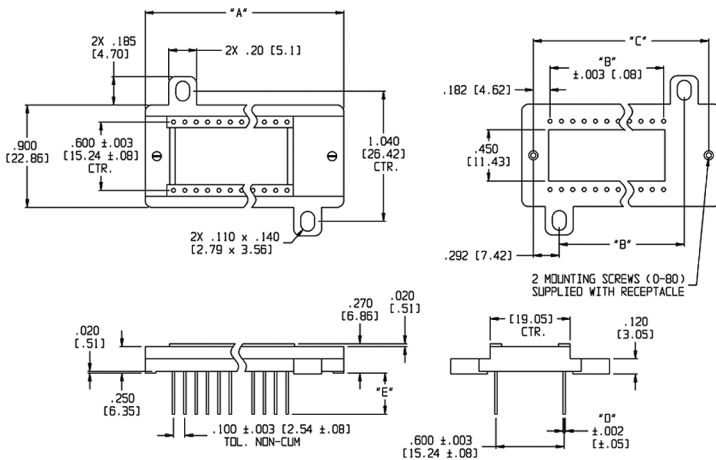
- Sturdy, Open-frame, Easily Mounts to PC Boards
- Easy Replacement of Test Sockets
- Threaded Inserts at Both Ends of the Receptacle provides Firm and Positive Connection for Test Socket
- Choice of 4 Collet Pin Styles makes the Receptacle Useful for Any Interconnection Method

## GENERAL SPECIFICATIONS

- **SOCKET BODY:** black UL 94V-0 glass-filled Polyphenylene Sulfide (PPS)
- **PIN BODY:** Brass 360 1/2-hard per UNS C36000 ASTM B16/B16M-05
- **PIN BODY PLATING:** 100μ [2.54μ] Ni underplate per SAE AMS-QQ-N-290, overplated with either: 200μ [5.08μ] min. matte Sn per ASTM B545-97(2004)e1 **-OR-** 200μ [5.08μ] min. 93/7 Sn/Pb per ASTM B545 **-OR-** 10μ [0.25μ] min. Au per MIL-G-45204
- **4-FINGER COLLET CONTACT:** BeCu per UNS C17200 ASTM B194-08
- **CONTACT PLATING:** 30μ [0.76μ] min. Au per MIL-G-45204 over 50μ [1.27μ] min. Ni per QQ-N-290
- **HARDWARE:** Stainless Steel and Ni-plated Brass
- **CONTACT CURRENT RATING:** 3 amps
- **OPERATING TEMPERATURE:** 221°F [105°C] Sn plating; 302°F [150°C] Au plating
- **ACCEPTS LEADS:** 0.015-0.025 [0.38-0.64] in dia., 0.110-0.150 [2.54-3.81] long
- **INSERTION FORCE:** 180g/pin, based on 0.018 [0.46] dia. test lead
- **WITHDRAWAL FORCE:** 90g/pin, based on 0.018 [0.46] dia. test lead
- **NORMAL FORCE:** 140g/pin, based on 0.018 [0.46] dia. test lead

## MOUNTING CONSIDERATIONS

- See DIMENSION TABLE below



## ORDERING INFORMATION

**XX-6556-1 X**

### Handle Options

- 0 = Sn Body; Au Collet
- OTL = Sn/Pb Body; Au Collet
- 1 = Au Body; Au Collet

### Pin Style (see Page 2)

- 1 = Solder Tail
- 2 = 2-level Wire Wrap
- 3 = 3-level Wire Wrap
- 4 = Solder Cup

### Series

### Pins

- 24, 28, 32, 36, 40, 42, 44, 48

# Pins	Dim. "A"	Dim. "B"	Dim. "C"
24	1.790 [45.47]	1.100 [27.94]	1.615 [41.02]
28	1.990 [50.55]	1.300 [33.02]	1.815 [46.10]
32	2.190 [55.63]	1.500 [38.10]	2.015 [51.18]
36	2.390 [60.71]	1.700 [43.18]	2.215 [56.26]
40	2.590 [65.79]	1.900 [48.26]	2.415 [61.34]
42	2.660 [67.56]	2.000 [50.80]	2.515 [63.88]
44	2.790 [70.87]	2.100 [53.34]	2.615 [66.42]
48	2.990 [75.85]	2.300 [58.42]	2.815 [71.50]

ALL DIMENSIONS: INCHES [MILLIMETERS]

ALL TOLERANCES: ±0.005 [0.13] UNLESS OTHERWISE SPECIFIED

FOR UNIVERSAL TEST SOCKET SERIES X55X: SEE DATA SHEET 10001

FOR HIGH-TEMP VERSION: SEE DATA SHEET 10002

CONSULT FACTORY FOR OTHER SIZES AND CONFIGURATIONS

CUSTOMIZATION: ARIES SPECIALIZES IN CUSTOM DESIGN AND PRODUCTION. SPECIAL MATERIALS, PLATINGS, SIZES, AND CONFIGURATIONS CAN BE FURNISHED, DEPENDING ON QUANTITY.

ARIES RESERVES THE RIGHT TO CHANGE PRODUCT GENERAL SPECIFICATIONS WITHOUT NOTICE

PRINTOUTS OF THIS DOCUMENT MAY BE OUT-OF-DATE AND SHOULD BE CONSIDERED UNCONTROLLED



**ARIES**  
ELECTRONICS, INC.

2609 Bartram Road • Bristol, PA 19007-6810 USA

TEL 215-781-9956 • FAX 215-781-9845

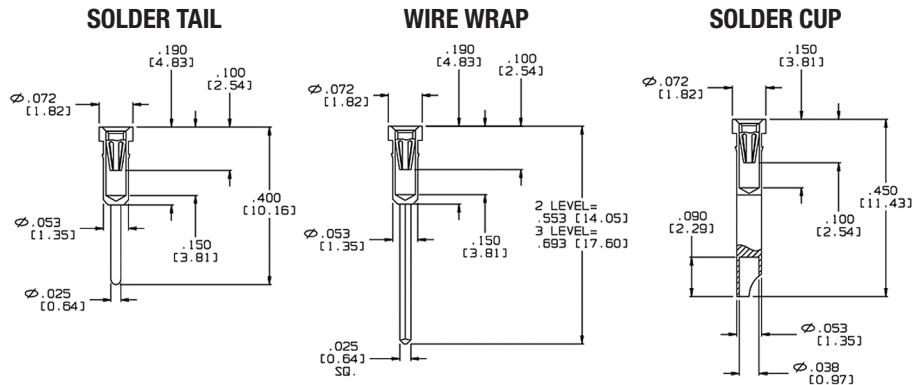
WWW.ARIESELEC.COM • INFO@ARIESELEC.COM



10003  
Rev. 1.2  
1 of 2



# Series 6556 Universal Test Socket Receptacle



Pin Style	Dim. "D" ±0.002 [0.05]	Dim. "E"	Rec. PCB Hole Dia. Size ±0.002 [0.05]
1	0.025 [0.64]	0.130 [3.30]	0.035 [0.89]
2	0.025 [0.64]	0.283 [7.19]	0.044 [1.12]
3	0.025 [0.64]	0.423 [10.74]	0.044 [1.12]
4	0.053 [1.35]	0.180 [4.57]	0.063 [1.60]

ALL DIMENSIONS: INCHES [MILLIMETERS]  
 ALL TOLERANCES: ±0.005 [0.13] UNLESS OTHERWISE SPECIFIED  
 FOR UNIVERSAL TEST SOCKET SERIES X55X: SEE [DATA SHEET 10001](#)  
 FOR HIGH-TEMP VERSION: SEE [DATA SHEET 10002](#)  
 CONSULT FACTORY FOR OTHER SIZES AND CONFIGURATIONS

**CUSTOMIZATION:** ARIES SPECIALIZES IN CUSTOM DESIGN AND PRODUCTION. SPECIAL MATERIALS, PLATINGS, SIZES, AND CONFIGURATIONS CAN BE FURNISHED, DEPENDING ON QUANTITY.

ARIES RESERVES THE RIGHT TO CHANGE PRODUCT GENERAL SPECIFICATIONS WITHOUT NOTICE

PRINTOUTS OF THIS DOCUMENT MAY BE OUT-OF-DATE AND SHOULD BE CONSIDERED UNCONTROLLED



**ARIES**  
ELECTRONICS, INC.

2609 Bartram Road • Bristol, PA 19007-6810 USA  
 TEL 215-781-9956 • FAX 215-781-9845  
[WWW.ARIESELEC.COM](http://WWW.ARIESELEC.COM) • [INFO@ARIESELEC.COM](mailto:INFO@ARIESELEC.COM)



10003  
Rev. 1.2  
2 of 2