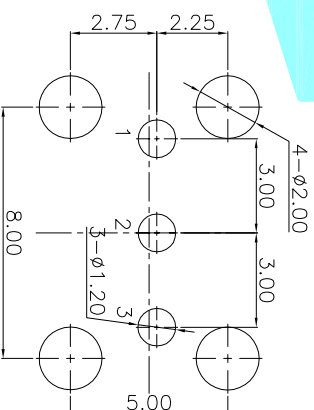
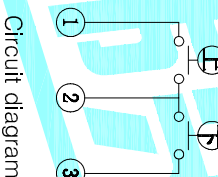
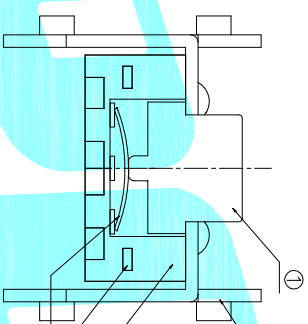
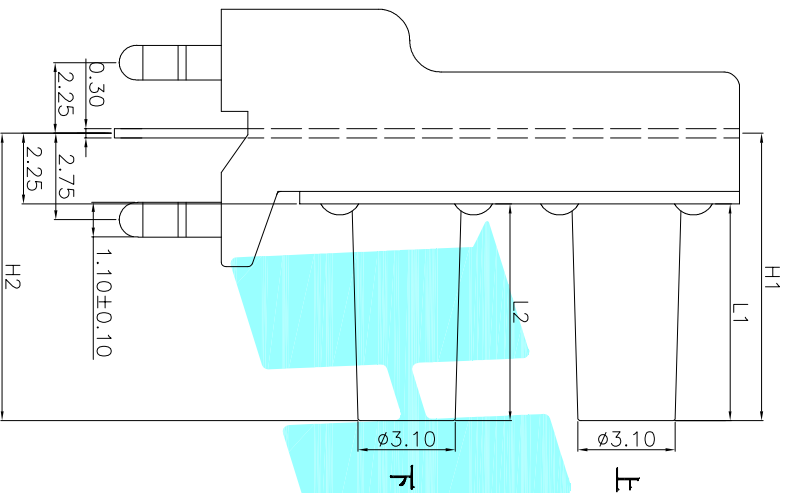


		NO.1			
PART NO		L1	L2	H1	H2
A: 双联上5下5	1.4	1.4	3.65	3.65	
B: 双联上5下10	1.4	6.4	3.65	8.65	
C: 双联上7下10.5	3.4	6.9	5.65	9.15	
D: 双联上10下5	6.4	1.4	8.65	3.65	
E: 双联上10下7	6.4	3.4	8.65	5.65	
F: 双联上10下10	6.4	6.4	8.65	8.65	
G: 双联上11.5下11.5	7.9	7.9	10.15	10.15	
H: 双联上10.5下10.5	6.9	6.9	9.15	9.15	
I: 双联上15.5下5	11.9	1.4	14.15	3.65	
M: 双联上11.5下17	7.9	13.4	10.15	15.65	
N: 双联上17下17	13.4	13.4	15.65	15.65	



- Typical Specifications :
1. Rating : DC 12V 50mA
 2. Contact Resistance: 50mΩ Max
 3. Insulation Resistance: 100MΩ Min.
 4. Operation Stroke: 0.2±0.05mm
 5. Life:50,000 Cycles Min.

NO.2	
PART NO	Wgvr
3	180±30
4	250±30

NO.3	
PART NO	MATERIAL/QTV
S	SUS/1PC
C	CS210/1PC

NO.4-NO.5	
PART NO	NOTE
01~99	SERIAL NUMBER

⑤	Terminal	—	3	Brass(0.30t)	Plating silver	—
④	Base	—	1	PPA	Black	—
③	Contact	—	2	Phosphor Bronze	F.Ag	—
②	Cover	—	1	SPCC	Plating Ni	—
①	Keystroke	—	2	PPA	Black	—
ITEM	PART NAME	TER'NO.	QTY.	MATERIAL	FINISHING	REMARK

APPROVALS		DATE
DRAWN	JKUN,LU	2016/6/24

CHECKED		TITLE:	
APPROVALS		TACT SWITCHS	
TOLERANCES ARE	30~∅以上 10~30 5~10 ~5	±0.30 ±0.20 ±0.15 ±0.10	ANGLE ±2°
ECN NO.	REV	DATE.	DESCRIPTION.
NEW	A		
CHANGE.			
CHECK.			
APPRO.			
DRAWING NO.			

ELECTRONICS CO.,LTD

