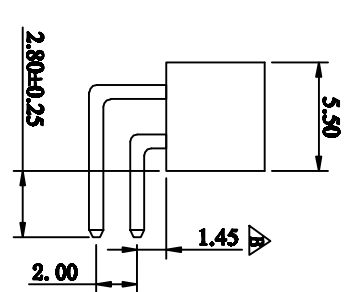
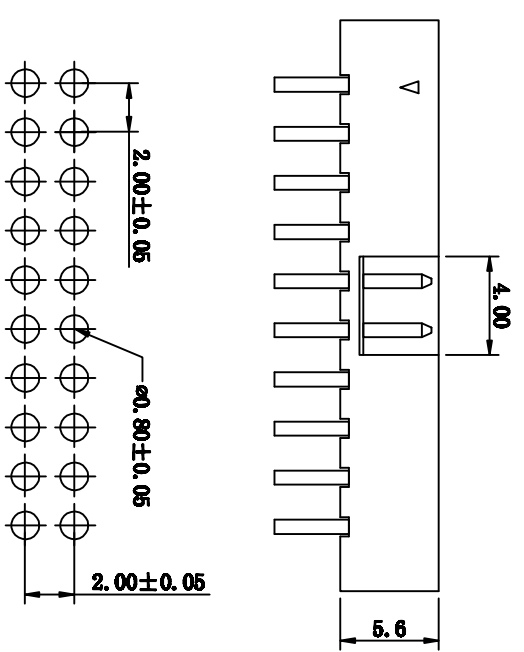
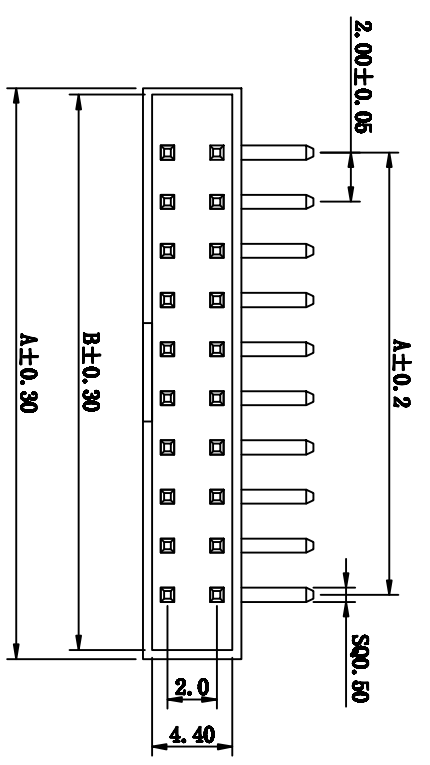


客户确认				
日期				
标记	版次	变更内容	日期	
△	A版	新版图面	2008-04-10	
	B版	折弯尺寸1.2mm变更为1.45mm	2017-11-24	



Poles	Part No.	Dimension mm		
		A	B	C
10	300-2R-10P	17.34	16.24	8.00
12	300-2R-12P	19.34	18.24	10.00
14	300-2R-14P	21.34	20.24	12.00
16	300-2R-16P	23.34	22.24	14.00
18	300-2R-18P	25.34	24.24	16.00
20	300-2R-20P	27.34	26.24	18.00
24	300-2R-24P	31.34	30.24	22.00
26	300-2R-26P	33.34	32.24	24.00
30	300-2R-30P	37.34	36.24	28.00
34	300-2R-34P	41.34	40.24	32.00
40	300-2R-40P	47.34	46.24	38.00
44	300-2R-44P	51.34	50.24	42.00
50	300-2R-50P	57.34	56.24	48.00

P.C.B. LAYOUT

TOLERANCE TABLE

.0	±0.20
.00	±0.10
.000	±0.05

APPROVED:	DATE:	C 深圳市如科盟实业有限公司 KIMT W CHANKIEMENT INDUSTRY CO., LTD
CHECKED:	DATE:	
DRAWN:	DATE:	TITLE:
LTF	2008-04-10	300-2R-XP
Part No. B-3002RXXP-0110		UNIT mm SCALE free
FILE NO. Chantw-300-0004	REV. A	

SPECIFICATION:
 Current Rating: 1.5AMP
 Contact Resistance: 20m Ω (max)
 Insulation Resistance: 1000M Ω Min at 500V DC
 Dielectric Strength: 500V AC Per 1 Minute
 Operating Temperature: -40°C TO +105°C

MATERIALS:
 Insulator: Nylon66 or GT+30% Glass Fiber, UL94V-0
 Contact: Brass
 Contact plated: Gold Over Nickel