

# RUGGED RCGL SERIES PURE-SINEWAVE DC-AC INVERTERS

Input: 12, 24, or 48VDC  
Output: 120V or 220V 1Ø  
50 or 60Hz  
Power: 2KW



## APPLICATIONS

Utilizing field proven technology, this family of rugged pure sinewave DC-AC Inverters is suitable for harsh environments and can be customized for unique applications including:

- Military Shelters
- Tactical Systems
- Ground support
- MIL-STD-810
- Utility Applications
- Mobile Systems
- Communications
- MIL-STD-461



**NOVA ELECTRIC**  
[www.novaelectric.com](http://www.novaelectric.com)  
[novasales@theallpower.com](mailto:novasales@theallpower.com)



A Leader in DC-AC Inverter Technology since 1966 - 500VA to 500+KVA

MADE IN USA

# PURE SINEWAVE DC-AC INVERTER

## SPECIFICATIONS

### FEATURES

- Microprocessor based design with absolutely stable frequency.
- Panel LEDs for battery voltage & load level.
- Compact and light weight, yet rugged and vehicle rated.
- 93-95% efficient.
- Tightly regulated output voltage and frequency
- Switch selectable 50 or 60 Hz output.
- Capable of driving highly reactive loads such as electric tools and appliances.
- Capable of driving highly capacitive loads such as switching power supplies.
- Very low harmonic distortion, THD<3%.
- Suitable for vehicle mounting.
- Switch selectable  $\pm 10V$  output change.
- Load Controlled Cooling fan.

### ELECTRICAL

Input Voltage: 12, 24 or 48 V  
 Output Voltage 110V model: 100/110/120 VAC  
 Output Voltage 220V model: 220/230/240 VAC  
 Output Frequency: 50 or 60 HZ  
 (User Selectable + 0.05% Accuracy)  
 Continuous Power Rating: 2000W  
 Surge Rating: 4000W  
 Efficiency (full load): 120V model 93%  
 Efficiency (full load): 220V model 95%  
 No load Current: <1.0W Sleep Mode  
 Output Waveform Sinewave: <3% THD  
 Output Regulation: +/-3%  
 MTBF: over 100,000 hours per field data  
 MTTR: 30 minutes

### PROTECTIVE FEATURES

Overload, Short Circuit, Reverse Polarity (Fuse), O.T, Over/Under Input Voltage.

### ENVIRONMENTAL

Operating Temperature: -20°C to +50°C  
 Storage Temperature: -40°C to +71°C  
 Shock: 20g / 11ms per MIL-STD-810  
 Vibration: per MIL-STD-810  
 Humidity: per MIL-STD-810 to 95% non condensing  
 EMI: per MIL-STD-461 CE102, CS101, CS114, CS115, CS116, RE102, and RS103

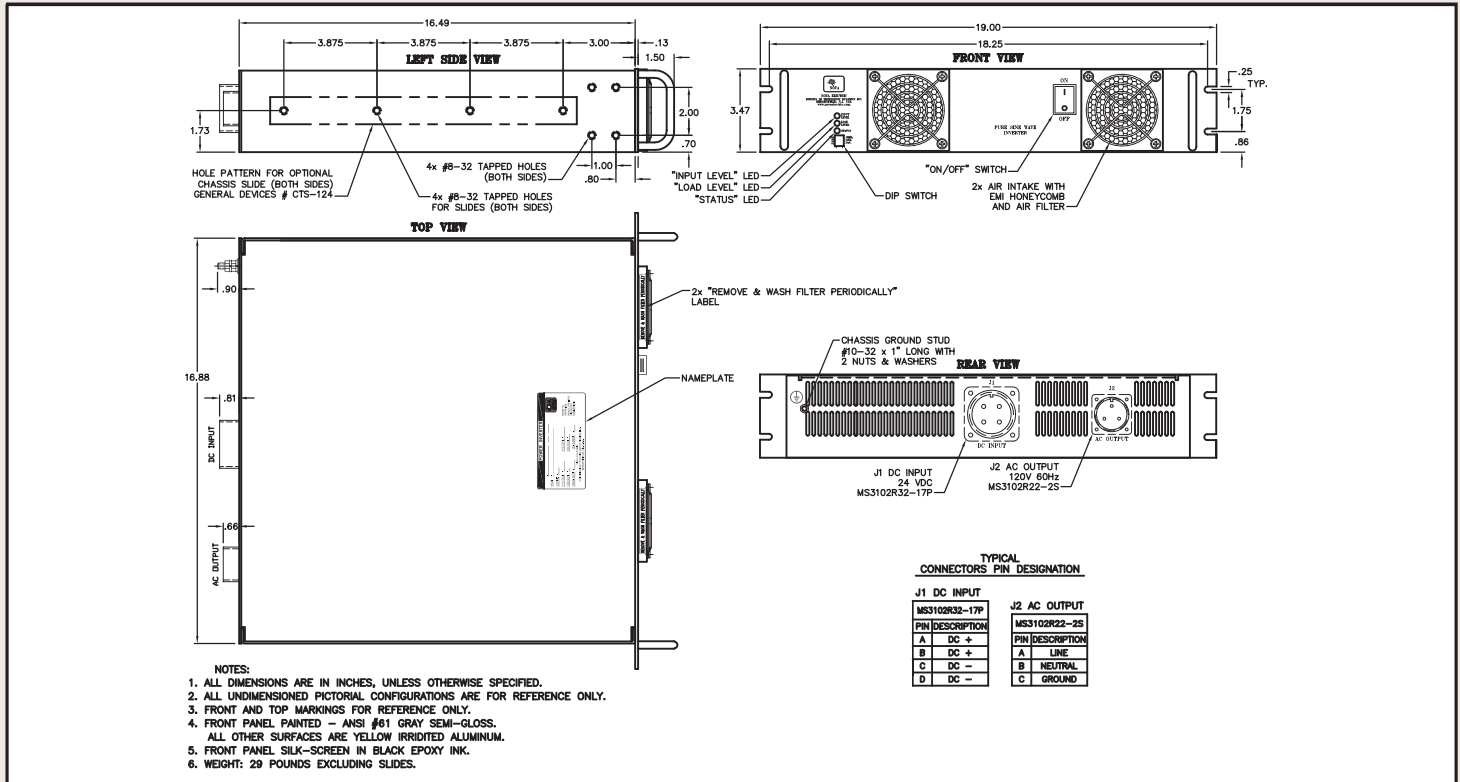
### POPULAR OPTIONS

- MS Connector Mates
- Chassis Slides
- Additional Ruggedization against Shock / Vibration / Humidity to MIL-STD-810
- Weatherproofing Package (Sealed Breakers / Switches, additional dust filtration, and louvered air intake / exhaust for protection from splashing water
- Internal Electromechanical Transfer Switch

### MODEL SELECTION

MODEL	INPUT RANGE VDC	OUTPUT VAC	OUTPUT FREQ. (HZ)	CONTINUOUS OUTPUT POWER	APPROX. WEIGHT (LB)	SIZE (HxWxL) (INCHES)
RCGL2K-12-120	10.5-15	120	50 OR 60	2KW	29 LB	3.5 x 19 x 16.5
RCGL2K-12-220	10.5-15	220	50 OR 60	2KW	29 LB	3.5 x 19 x 16.5
RCGL2K-24-120	21-30	120	50 OR 60	2KW	29 LB	3.5 x 19 x 16.5
RCGL2K-24-220	21-30	220	50 OR 60	2KW	29 LB	3.5 x 19 x 16.5
RCGL2K-48-120	42-60	120	50 OR 60	2KW	29 LB	3.5 x 19 x 16.5
RCGL2K-48-120	42-60	220	50 OR 60	2KW	29 LB	3.5 x 19 x 16.5

### MECHANICAL SPECIFICATIONS



WEB : [www.novaelectric.com](http://www.novaelectric.com)

E-Mail : [novasales@theallpower.com](mailto:novasales@theallpower.com)

PHONE : (201) 385-0500 FAX : (201) 385-0702



**NOVA ELECTRIC**

A Division of

TECHNOLOGY DYNAMICS, INC.

100 School St., Bergenfield NJ 07621

