

ATLANTIC VERSION TERMINATOR INTERFACE ADAPTER	PART NUMBER	REVISION	DESCRIPTION	FEED TYPE	APPLICATOR STYLE CONVERSION CHART						
					CONVERT TO	PART NUMBERS REQUIRED					
	2151730-1	D	FINE CRIMP HEIGHT ADJUST	MECHANICAL	PNEUMATIC FEED	2119950-1	1338685-1	5-18022-5	2119641-1	2119799-1	2063440-1
	2151730-2	D	FINE CRIMP HEIGHT ADJUST	PNEUMATIC	SERVO LATCH PLATE	2119951-1	-	8-2151730-5	1901094-3	-	2168400-6 (QUANTITY 2)
					SMART APPLICATOR	2161326-1	-	8-2151730-4	-	-	
					MECHANICAL FEED	2119949-1	1338685-1	5-18022-5	2119653-1	-	
	2151730-5	D	FINE CRIMP HEIGHT ADJUST	SERVO LATCH PLATE	SERVO LATCH PLATE	2119951-1	-	8-2151730-5	1901094-3	-	2168400-6 (QUANTITY 2)
					SMART APPLICATOR	2161326-1	-	8-2151730-4	-	-	
	2151730-6	D	NON-CRIMP HEIGHT ADJUST	NON-CRIMP HEIGHT ADJUST	NONE	MECHANICAL FEED	2119949-1	1338685-1	5-18022-5	2119653-1	-
7-2151730-7	A	CRIMP TOOLING KIT	PNEUMATIC FEED			2119950-1	1338685-1	5-18022-5	2119641-1	2119799-1	2063440-1

APPLICATOR DATA		
CRIMP WIRE	SIZE	TYPE
INSUL	2.03 mm [.080]	F
	4.25 mm [.167]	O

APPLICATOR INSTRUCTIONS  
408-10389

TERMINAL DATA: TE TERMINAL		TE CRIMP SPECIFICATION	
TERMINAL NAME: 2.8mm BLADE, SEALED			
WIRE STRIP LENGTH		INSULATION DIAMETER RANGE	
5.50-5.51 mm [.217-.217 IN]		Ø1.20-2.70 mm [.047-.106 IN]	
TERMINAL APPLICATION SPECIFICATION			
114-13013			
TERMINALS APPLIED			
TE TERMINAL	TE SEAL	YAZAKI SEAL	
1326031-8	1326032-9	1949064-1	7158-3113-40
		1949064-2	7158-3112-70

WIRE SIZE	CRIMP HEIGHT mm [INCH]	CRIMP HEIGHT REFERENCE SETTING
18 AWG	1.37+/-0.05 [.054+/- .002]	4.1
1.00mm2	1.30+/-0.05 [.051+/- .002]	4.9
0.75mm2	1.22+/-0.05 [.048+/- .002]	6.0



- 1 RECOMMENDED SPARE PARTS
- 2 GREASE BEARING SURFACES LIGHTLY
3. LUBRICATE DAILY PER THE APPLICATOR INSTRUCTION SHEET SUPPLIED WITH THE APPLICATOR.
- 4 APPLICATOR SPECIFIC DATA TO BE ENTERED INTO BLANK MEMORY CHIP AT ASSEMBLY. SEE BELOW FOR PART NUMBER:  
MECHANICAL FEED WITH "SMART APPLICATOR" CONVERSION: 8-2151730-4  
PNEUMATIC FEED WITH "SMART APPLICATOR" CONVERSION: 8-2151730-4  
SERVO FEED WITH "FINE CRIMP HEIGHT ADJUST": 8-2151730-5  
SERVO FEED WITH "NON-CRIMP HEIGHT ADJUST": 8-2151730-6
5. ADJUSTMENT OF THE STRIPPER MAY BE REQUIRED WHEN MOVING THE APPLICATOR BETWEEN BENCH AND LEADMAKER APPLICATIONS.
- 6 APPLY PART NUMBER 1-23419-5 LOCTITE TO THREADS OF ITEM 62. APPLY PART NUMBER 2-23419-6 LOCTITE TO THREADS OF ITEM 242. FOR -6 ONLY APPLY PART NUMBER 1-23419-5 LOCTITE TO THREADS OF ITEM 37.
- 7 GREASE THREADS, GROOVE AND O-RING ON ITEMS 35 & 252.
- 8 MAGNET, ITEM 166 MUST BE ORIENTED CORRECTLY IN ORDER TO PROPERLY ACTUATE THE COUNTER.
- 9 CRIMP HEIGHT REFERENCE SETTING WAS THE SETTING USED WHEN THE APPLICATOR WAS QUALIFIED AT THE FACTORY. ADJUSTMENT MAY BE NECESSARY WHEN RUNNING APPLICATOR IN THE FIELD.
- 10 SPARE FEED CAM STORAGE LOCATION REFER TO INSTRUCTION SHEET FOR ADDITIONAL INFORMATION.
- 11 TO CONVERT THE APPLICATOR TO A NON-CARRIER CUTTING STYLE, REMOVE ITEM 13 AND ATTACH TO THE LOCATION ON THE BACK SIDE OF THE HOUSING. REFER TO INSTRUCTION SHEET FOR ADDITIONAL INFORMATION.
- 12 WHEN ASSEMBLING -6 NON-CRIMP HEIGHT ADJUST APPLICATOR USE SHIM PACK 2119957-2 TO ALIGN APPLICATOR'S MAXIMUM WIRE CRIMP HEIGHT AT NORMAL TERMINATOR SHUT HEIGHT
- 13 THIS APPLICATOR APPLIES TERMINAL WITH A SEAL.
- 14 APPLY TORQ-SEAL IN ALLEN SOCKET TO FILL HOLE AFTER FLAT HD HAS BEEN ADJUSTED TO CORRECT HEIGHT AT QUALIFICATION. APPLY #1-23419-5 LOC-TITE TO THREADS.

\*WARNING  
ON INSTALLATION, SET WIRE DISC, ITEM 40 TO LARGEST WIRE SIZE SETTING. USE OF SETTINGS BELOW MINIMUM REQUIRED CRIMP HEIGHT SETTING WILL CAUSE DAMAGE TO CRIMP TOOLING.

ITEM NO	DESCRIPTION	ITEM NO
-77	APPLICATOR SHIM PACK	260
-78	SPACER, CRIMPER	259
-79	O-RING, .676 ID, .070 DIA. MAT.	252
-80	PUSH ROD, AIR FEED	250
-81	BUSHING, LCH5-12, MISUMI	249
-82	FEED CAM, AIR FEED	248
-83	DETENT PIN	247
-84	SPRING, COMPRESSION	246
-85	RAM, STEPPED, ATLANTIC, SF, NON-ADJ	245
ITEM NO	DESCRIPTION	ITEM NO

ATLANTIC VERSION  
Shown on sheets 1 of 4 & 2 of 4  
(Pacific version shown on sheets 3 of 4 & 4 of 4)

SET UP GAUGE		LOC	DIST	REVISIONS					
2119599-1		A	66	R	LTN	DESCRIPTION	DATE	OWN	APPV
				A		RELEASED	02OCT2012	RK	TE
				B		ECR-13-015652	08OCT2013	YY	UG
				C		ECR-15-012274	18AUG2015	GH	GB
				D		ECR-15-016622	12NOV2015	KH	JT

ITEM NO	DESCRIPTION	ITEM NO
- 1	CAM, SNAIL, INSULATION ADJUSTMENT	244
- 1	WASHER, WAVE SPRING, CREST-TO-CREST	243
- 1	RETAINER, INSULATION DIAL	242
- 1	SCR, SKT HD CAP M3 X 4.0	241
- 2	SHCS, LOW HEAD, RoHS, M5 X 16	240
- 1	MECHANICAL FEED ASSEMBLY	239
- 1	AIR FEED MODULE	238
- 1	TAG, IDENTIFICATION	213
- 1	SPACER, FEEDER	198
- 1	RING, RETAIN, EXTERN, 3/16 CRESCENT	172
- 1	MAGNET, RARE EARTH HIGH ENERGY	166
- REF	COUNTER, MAGNETIC	164
- 1	SPRING, FEED FINGER	163
- 1	PIN, RETAIN, GRVD, 3/16 X .854	137
- 1	HOLDER, FEED FINGER, AF	136
- REF	MEMORY CHIP, PROGRAMMED	135
- 1	SERVO FEED LATCH ASM	133
- 1	GUARD, FRONT CHIP	119
- REF	FEED FINGER ASSEMBLY, SF	117
- 1	SPACER, CRIMPER	82
- 1	SCR, FLT SKT HD CAP M3 X 6.0	81
- 1	DEPRESSOR, WIRE	80
- 2	SCR, BTN SKT HD CAP (M4 X 8.0)	79
- 1	EXTENSION PLATE	78
- 1	DOCUMENTATION PACKAGE	71
- 1	TAG, IDENTIFICATION	67
- 2	SCREW, DRIVE, RH, RoHS, 2 x .188	66
- 1	LIMITER, ADJUSTMENT BOLT	63
- 3	SCR, SET, SOC, CONE POINT, M3 X 4.0	62
- 1	SCR, BHSC, RoHS (M4 X 8)	60
- 1	SCR, HEX HD CAP, M4 X 6.0	59
- 1	SCR, FLT SKT HD CAP M3 X 10.0	57
- 1	PAWL, FEED	56
- 4	SHCS, LOW HEAD, RoHS, M4 X 12	54
- 2	SCR, SKT HD CAP, RoHS, M4 X 10	53
- 1	NUT, HEX, REG, RoHS, M3	52
- 1	BUMPER, HOLD DOWN	51
- 1	SPACER, TONKER	50
- 1	SCR, SKT HD CAP M4 X 6.0	49
- 1	FEED CAM, PRE FEED	48
- 1	FEED CAM, POST FEED	47
- 1	APPLICATOR BASIC ASSEMBLY, SF	46
- 1	RAM, STEPPED, AMP STYLE, SIDE FEED	44
- 1	SCR, BHSC, RoHS (M8 X 40)	41
- 1	DISC, NUMBERED FA WIRE ADJUSTMENT	40
- 1	APPLICATOR SHIM PACK	39
- 1	RAM WASHER, PRECISION	38
- 1	FA HEAD, ATLANTIC STYLE	37
- 1	BOLT, ADJUSTMENT	35
- 1	SUPPORT, TERMINAL	34
- 2	SCR, BHSC, RoHS (M4 X 20)	33
- 1	HEX HEAD, FLANGED, M5 X 8mm LONG	32
- 1	SPACER, STRIP GUIDE	30
- 1	ASSEMBLY, STRIP GUIDE	29
- 1	SPACER, CRIMPER	28
- 1	DRAG, TERMINAL	25
- 1	STRIP GUIDE	24
- 1	SCR, SKT HD CAP, RoHS, M4 X 8.0	21
- 1	WASHER, FLAT, REG M4	20
- 1	STRIPPER, SIDE FEED	19
- 1	INSERT, SHEAR	13
- 1	SPRING, COMPRESSION	12
- 1	STOP, SHEAR	11
- 1	SHEAR HOLDER, FRONT	10
- 1	FLOATING SHEAR, FRONT	9
- 1	ANVIL, COMBINATION	8
- 1	-	7
- 1	-	6
- 1	DEPRESSOR, SHEAR	5
- 1	BLOCK, CRIMPER SPACER	4
- 1	CRIMPER, INSULATION O PREMIUM	3
- 1	SPACER, CRIMPER	2
- 1	CRIMPER, WIRE	1
ITEM NO	DESCRIPTION	ITEM NO

DIMENSIONS:		TOLERANCES UNLESS OTHERWISE SPECIFIED:	
mm	0 PLC	±	
	1 PLC	±	
	2 PLC	±	
	3 PLC	±	
	4 PLC	±	
	ANGLES	±	
MATERIAL	FINISH		

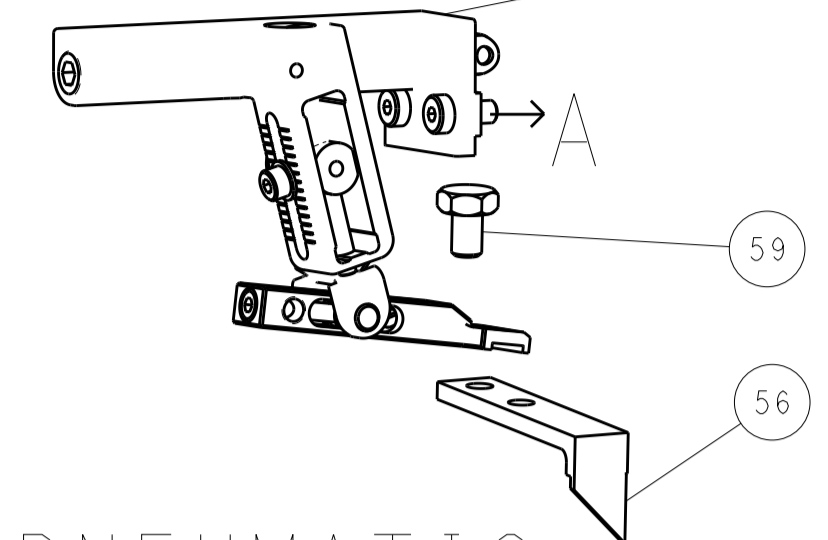
DATE	BY	CHK	APPV	NAME
25 JUL 2012	Y. YIN	G. BAILEY	S. XI	G. BAILEY
25 JUL 2012				

SIZE	CAGE CODE	DRAWING NO	RESTRICTED TO
A1	00779	2151730	

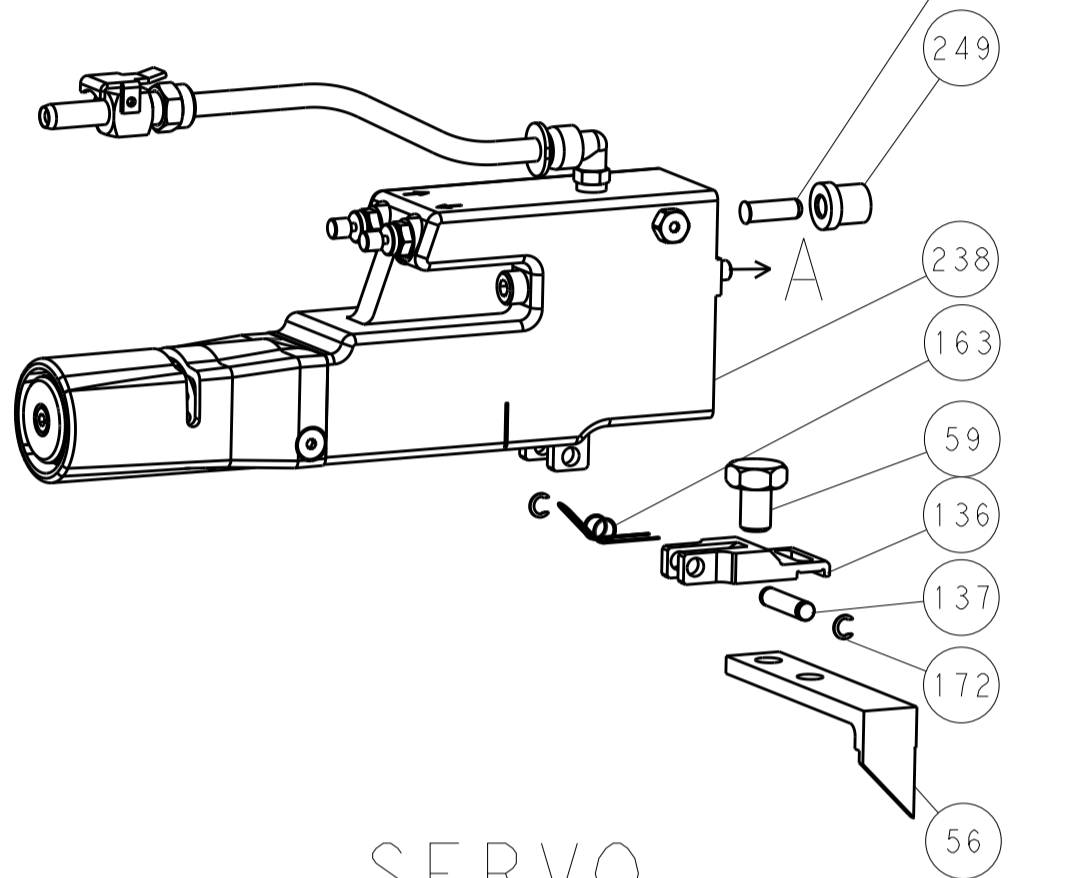
Customer Accessible Production Drawing SCALE 1:2 SHEET 1 of 4 REV D

LOC		DIST		REVISIONS			
A	66	P	LTN	DESCRIPTION	DATE	DMN	APVD
		-		SEE SHEET 1			

### FEED TYPE MECHANICAL



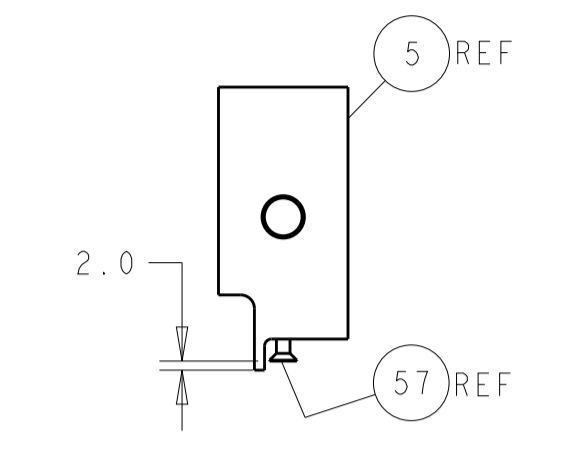
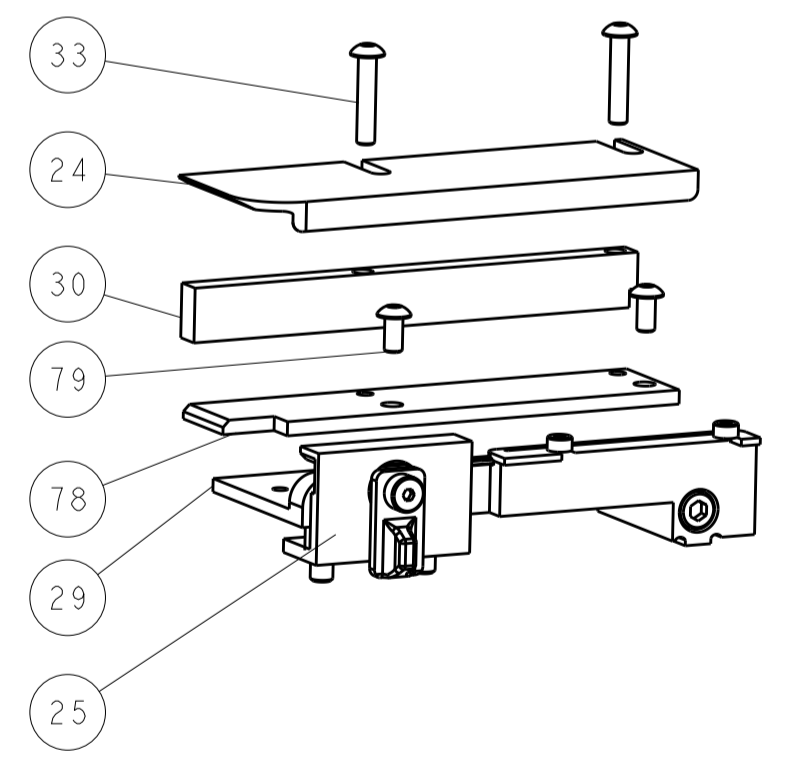
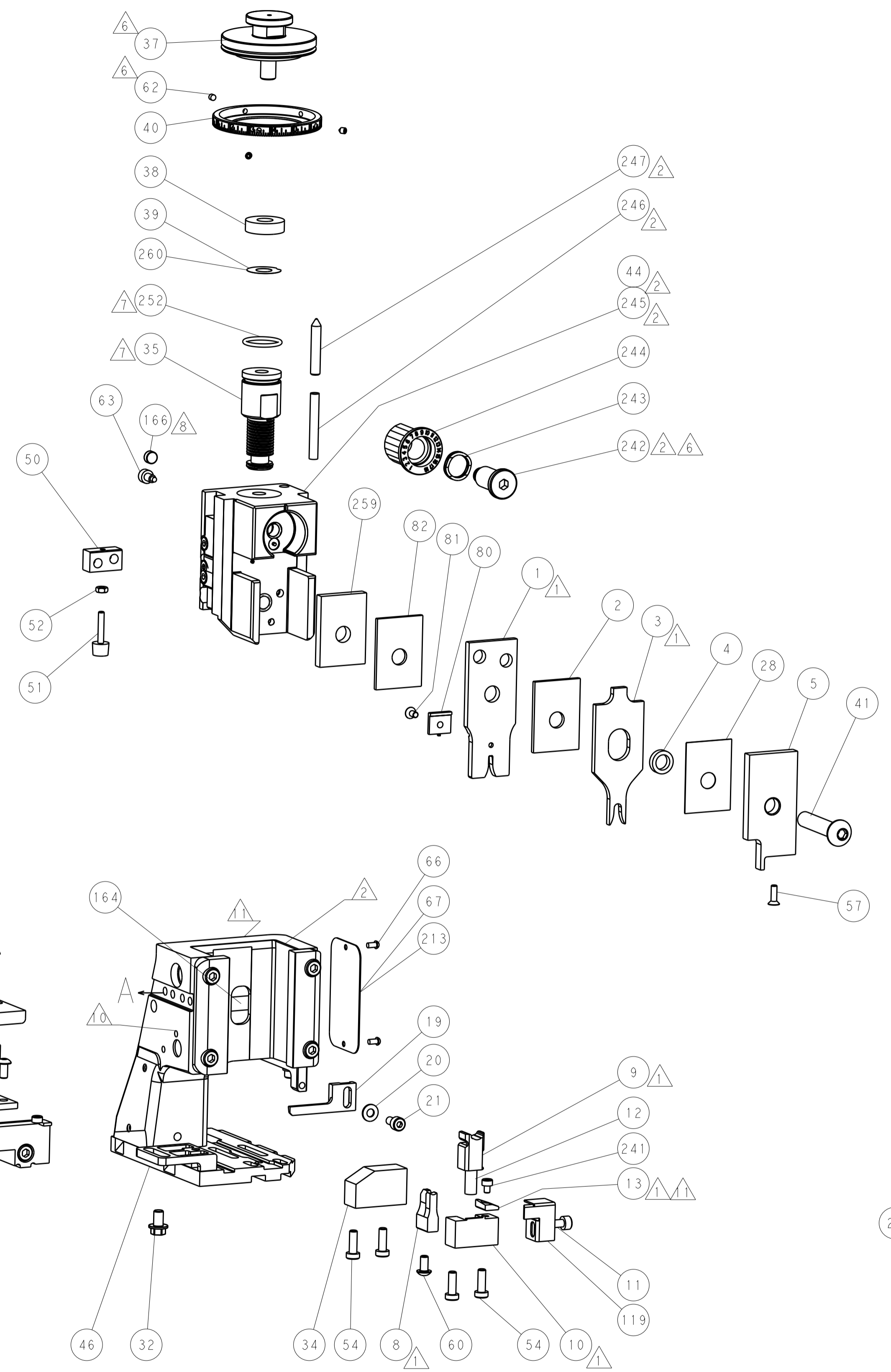
### PNEUMATIC



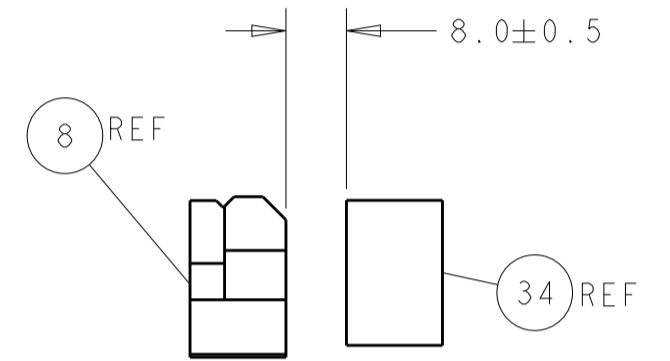
### SERVO LATCH PLATE



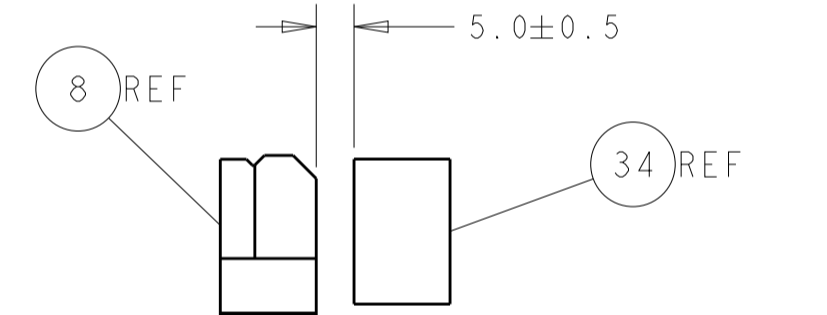
### CAM POSITIONS



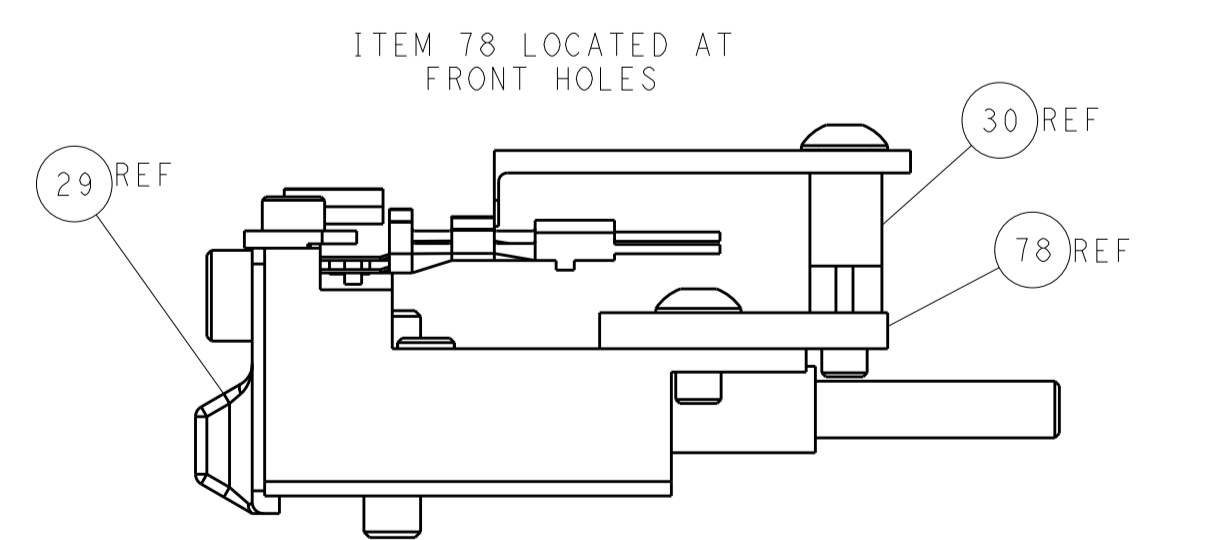
SHEAR DEPRESSOR DETAIL



TERMINAL SUPPORT LOCATION FOR BLADE TERMINAL P/N 1326031-8



TERMINAL SUPPORT LOCATION FOR RECEPTACLE TERMINAL P/N 1326032-9



FEED TRACK POSITION GUIDE BY WIRE BARREL

**ATLANTIC VERSION**  
 Shown on sheets 1 of 4 & 2 of 4  
 (Pacific version shown on sheets 3 of 4 & 4 of 4)

DIMENSIONS:		TOLERANCES UNLESS OTHERWISE SPECIFIED:		DWG: Y. YIN 25JUL2012		TE Connectivity	
mm	0 PLC ±	1 PLC ±	2 PLC ±	3 PLC ±	4 PLC ±	5 PLC ±	Harrisburg, PA 17105-3608
	ANGLES			CHK: G. BAILEY 25JUL2012	NAME: Ocean Side Feed Applicator	SIZE: A1	CAGE CODE: 00779
MATERIAL:	FINISH:	WEIGHT:	SCALE: 1:1	APVD: S. XI 25JUL2012	DRAWING NO: 2151730	SHEET: 2	REV: D
Customer Accessible Production Drawing				RESTRICTED TO			

PACIFIC VERSION TERMINATOR INTERFACE ADAPTER	PART NUMBER	REVISION	DESCRIPTION	FEED TYPE	APPLICATOR STYLE CONVERSION CHART						
					CONVERT TO	PART NUMBERS REQUIRED					
	2-2151730-1	D	FINE CRIMP HEIGHT ADJUST	MECHANICAL	PNEUMATIC FEED	2119950-1	1338685-1	5-18022-5	2119641-2	2119799-1	2063440-1
					SERVO LATCH PLATE	2119951-1	-	8-2151730-5	1901094-3	-	2168400-6 (QUANTITY 2)
					SMART APPLICATOR	2161326-1	-	8-2151730-4	-	-	-
	2-2151730-2	D	FINE CRIMP HEIGHT ADJUST	PNEUMATIC	MECHANICAL FEED	2119949-1	1338685-1	5-18022-5	2119653-2	-	-
					SERVO LATCH PLATE	2119951-1	-	8-2151730-5	1901094-3	-	2168400-6 (QUANTITY 2)
					SMART APPLICATOR	2161326-1	-	8-2151730-4	-	-	-
	2-2151730-5	D	FINE CRIMP HEIGHT ADJUST	SERVO LATCH PLATE	MECHANICAL FEED	2119949-1	1338685-1	5-18022-5	2119653-2	-	-
					PNEUMATIC FEED	2119950-1	1338685-1	5-18022-5	2119641-2	2119799-1	2063440-1
	2-2151730-7	D	FINE CRIMP HEIGHT ADJUST	NONE	-	-	-	-	-	-	-
	7-2151730-7	A	CRIMP TOOLING KIT	-	-	-	-	-	-	-	-

APPLICATOR DATA		
CRIMP	SIZE	TYPE
WIRE	2.03 mm [.080]	F
INSUL	4.25 mm [1.67]	O
APPLICATOR INSTRUCTIONS 408-10389		

TERMINAL DATA: TE TERMINAL	TE CRIMP SPECIFICATION		
TERMINAL NAME: 2.8mm BLADE, SEALED			
WIRE STRIP LENGTH 5.50-5.51 mm [1.217-.217 IN]	INSULATION DIAMETER RANGE Ø1.20-2.70 mm [1.047-.106 IN]		
TERMINAL APPLICATION SPECIFICATION 114-13013			
TERMINALS APPLIED			
TE TERMINAL	TE TERMINAL	TE SEAL PN	YAZAKI PN
1326031-8	1326032-9	1949064-1	7158-3113-40
		1949064-2	7158-3112-70

WIRE SIZE	CRIMP HEIGHT mm [INCH]	CRIMP HEIGHT REFERENCE SETTING
18 AWG	1.37 +/- 0.05 [1.054 +/- .002]	4.1
1.00mm2	1.30 +/- 0.05 [1.051 +/- .002]	4.9
0.75mm2	1.22 +/- 0.05 [1.048 +/- .002]	6.0

- RECOMMENDED SPARE PARTS
- GREASE BEARING SURFACES LIGHTLY
- 3. LUBRICATE DAILY PER THE APPLICATOR INSTRUCTION SHEET SUPPLIED WITH THE APPLICATOR.
- APPLICATOR SPECIFIC DATA TO BE ENTERED INTO BLANK MEMORY CHIP AT ASSEMBLY. SEE BELOW FOR PART NUMBER:  
 MECHANICAL FEED WITH "SMART APPLICATOR" CONVERSION: 8-2151730-4  
 PNEUMATIC FEED WITH "SMART APPLICATOR" CONVERSION: 8-2151730-4  
 SERVO FEED WITH "FINE CRIMP HEIGHT ADJUST": 8-2151730-5
- 5. ADJUSTMENT OF THE STRIPPER MAY BE REQUIRED WHEN MOVING THE APPLICATOR BETWEEN BENCH AND LEADMAKER APPLICATIONS.
- APPLY PART NUMBER 1-23419-5 LOCTITE TO THREADS OF ITEM 62. APPLY PART NUMBER 2-23419-6 LOCTITE TO THREADS OF ITEM 242.
- GREASE THREADS, GROOVE AND O-RING ON ITEMS 139 & 152.
- MAGNET MUST BE ORIENTED CORRECTLY IN ORDER TO PROPERLY ACTUATE THE COUNTER.
- CRIMP HEIGHT REFERENCE SETTING WAS THE SETTING USED WHEN THE APPLICATOR WAS QUALIFIED AT THE FACTORY. ADJUSTMENT MAY BE NECESSARY WHEN RUNNING APPLICATOR IN THE FIELD.
- SPARE FEED CAM STORAGE LOCATION REFER TO INSTRUCTION SHEET FOR ADDITIONAL INFORMATION.
- TO CONVERT THE APPLICATOR TO A NON-CARRIER CUTTING STYLE, REMOVE ITEM 13 AND ATTACH TO THE LOCATION ON BACK SIDE OF THE HOUSING. REFER TO INSTRUCTION SHEET FOR ADDITIONAL INFORMATION.
- THIS APPLICATOR APPLIES TERMINAL WITH A SEAL.
- APPLY TORQ-SEAL IN ALLEN SOCKET TO FILL HOLE AFTER FLAT HD HAS BEEN ADJUSTED TO CORRECT HEIGHT AT QUALIFICATION. APPLY #1-23419-5 LOC-TITE TO THREADS.

**\*WARNING**  
 ON INSTALLATION, SET WIRE DISC, ITEM 40 TO LARGEST WIRE SIZE SETTING. USE OF SETTINGS BELOW MINIMUM REQUIRED CRIMP HEIGHT SETTING WILL CAUSE DAMAGE TO CRIMP TOOLING.

-	1	1	1	1	2-455888-9	SPACER, CRIMPER	259
-	1	1	1	1	2119782-1	FINE ADJUST HEAD ASM, PACIFIC STYLE	251
-	-	-	-	-	2119640-1	PUSH ROD, AIR FEED	250
-	-	-	-	-	2079988-1	BUSHING, LCH5-12, MISUMI	249
-	1	1	1	1	1-22279-3	SPRING, COMPRESSION	246
-	1	1	1	1	2119082-7	CAM, SNAIL, INSULATION ADJUSTMENT	244
-	1	1	1	1	2079764-1	WASHER, WAVE SPRING, CREST-TO-CREST	243
-77	-27	-25	-22	-21	PART NO	DESCRIPTION	ITEM NO

**PACIFIC VERSION**  
 Shown on sheets 3 of 4 & 4 of 4  
 (Atlantic version shown on sheets 1 of 4 & 2 of 4)

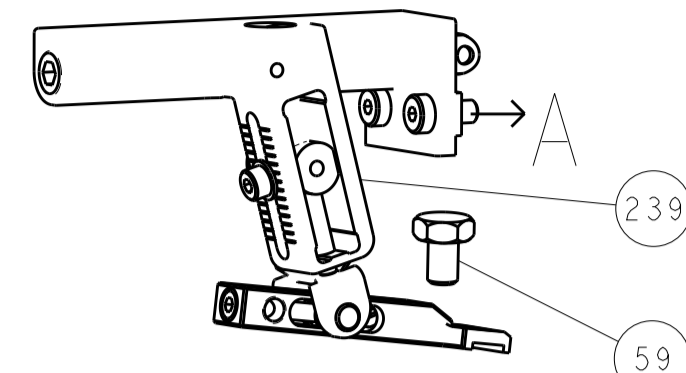
SET UP GAUGE	LOC	DIST	REVISIONS					
2119599-1	A	66	P	LTN	DESCRIPTION	DATE	OWN	APVD
					SEE SHEET 1			

	-	1	1	1	1	2119083-1	RETAINER, INSULATION DIAL	242
	-	1	1	1	1	7-18023-7	SCR, SKT HD CAP M3 X 4.0	241
	-	-	2	-	-	2168400-6	SHCS, LOW HEAD, RoHS, M5 X 16	240
	-	-	-	-	1	2119580-1	MECHANICAL FEED ASSEMBLY	239
	-	-	-	-	1	2063440-1	AIR FEED MODULE	238
	-	-	1	-	-	2119740-2	TAG, IDENTIFICATION	213
	-	-	1	-	-	1901094-3	SPACER, FEEDER	198
	-	-	-	2	-	21045-3	RING, RETAIN, EXTERN, 3/16 CRESCENT	172
	-	1	1	1	1	994969-1	MAGNET, RARE EARTH HIGH ENERGY	166
	-	REF	REF	REF	REF	994970-2	COUNTER, MAGNETIC	164
	-	-	-	1	-	240638-1	SPRING, FEED FINGER	163
	-	1	1	1	1	8-21084-1	O-RING, .801 ID, .070 DIA. MAT.	152
	-	-	-	1	-	2119641-2	FEED CAM, AIR FEED	151
	-	1	1	1	1	2119798-2	DETENT PIN	145
	-	1	1	1	1	2079383-8	SCR, BHSC, RoHS (M4 X 16)	144
	-	4	4	4	4	2168400-5	SHCS, LOW HEAD, RoHS, M4 X 20	143
	-	-	-	-	-	2119653-2	FEED CAM, POST FEED	142
	-	1	1	1	1	1-2119656-0	APPLICATOR BASIC ASSEMBLY, SF	141
	-	1	1	1	1	2161312-1	RAM, STEPPED, ASIAN STYLE, SIDE FEED	140
	-	1	1	1	1	2119092-2	BOLT, ADJUSTMENT	139
	-	-	-	-	1	3-23627-7	PIN, RETAIN, GRVD, 3/16 X .854	137
	-	-	-	-	1	2119799-1	HOLDER, FEED FINGER, AF	136
	-	-	REF	-	-	SEE NOTE 4	MEMORY CHIP, PROGRAMMED	135
	-	-	-	-	-	1633743-1	SERVO FEED LATCH ASM	133
	-	1	1	1	1	318563-1	GUARD, FRONT CHIP	119
	-	-	REF	-	-	2119944-1	FEED FINGER ASSEMBLY, SF	117
	-	1	1	1	1	1-455888-7	SPACER, CRIMPER	82
	-	1	1	1	1	985575-1	SCR, FLT SKT HD CAP M3 X 6.0	81
	-	1	1	1	1	224405-2	DEPRESSOR, WIRE	80
	-	2	2	2	2	18024-6	SCR, BTN SKT HD CAP (M4 X 8.0)	79
	-	1	1	1	1	1633470-2	EXTENSION PLATE	78
	-	1	1	1	1	2119956-1	DOCUMENTATION PACKAGE	71
	-	1	-	-	1	2119740-1	TAG, IDENTIFICATION	67
	-	2	2	2	2	2168078-1	SCREW, DRIVE, RH, RoHS, 2 x .188	66
	-	1	1	1	1	2119793-1	LIMITER, ADJUSTMENT BOLT	63
	-	3	3	3	3	992763-5	SCR, SET, SOC, CONE POINT, M3 X 4.0	62
	-	-	-	-	1	5-18022-5	SCR, HEX HD CAP, M4 X 6.0	59
	-	1	1	1	1	985575-3	SCR, FLT SKT HD CAP M3 X 10.0	57
	-	-	-	-	1	1338685-1	PAWL, FEED	56
	-	2	2	2	2	1-2168083-0	SCR, SKT HD CAP, RoHS, M4 X 10	53
	-	1	1	1	1	5018030-1	NUT, HEX, REG, RoHS, M3	52
	-	1	1	1	1	811242-5	BUMPER, HOLD DOWN	51
	-	1	1	1	1	690753-2	SPACER, TONKER	50
	-	-	-	-	1	18023-9	SCR, SKT HD CAP M4 X 6.0	49
	-	-	-	-	1	2119652-1	FEED CAM, PRE FEED	48
	-	1	1	1	1	1-2079383-5	SCR, BHSC, RoHS (M8 X 40)	41
	-	1	1	1	1	2119645-1	DISC, NUMBERED FA WIRE ADJUSTMENT	40
	-	1	1	1	1	2119957-1	APPLICATOR SHIM PACK	39
	-	1	1	1	1	2119644-1	RAM WASHER, PRECISION	38
	-	1	1	1	1	2-1752356-0	SUPPORT, TERMINAL	34
	-	2	2	2	2	2079383-5	SCR, BHSC, RoHS (M4 X 20)	33
	-	1	1	1	1	2161328-1	HEX HEAD, FLANGED, M5 X 8mm LONG	32
	-	1	1	1	1	1-1320908-5	SPACER, STRIP GUIDE	30
	-	1	1	1	1	2119959-4	ASSEMBLY, STRIP GUIDE	29
	-	1	1	1	1	455888-3	SPACER, CRIMPER	28
	-	1	1	1	1	240792-2	DRAG, TERMINAL	25
	-	1	1	1	1	1320928-6	STRIP GUIDE	24
	-	1	1	1	1	2168083-2	SCR, SKT HD CAP, RoHS, M4 X 8.0	21
	-	1	1	1	1	1-18028-2	WASHER, FLAT, REG M4	20
	-	1	1	1	1	2119533-2	STRIPPER, SIDE FEED	19
	-	1	1	1	1	2119806-1	INSERT, SHEAR	13
	-	1	1	1	1	3-22280-3	SPRING, COMPRESSION	12
	-	1	1	1	1	1-356885-4	STOP, SHEAR	11
	-	1	1	1	1	2119805-1	SHEAR HOLDER, FRONT	10
	-	1	1	1	1	318707-1	FLOATING SHEAR, FRONT	9
	1	1	1	1	1	1-1633927-6	ANVIL, COMBINATION	8
	-	-	-	-	-	-	-	7
	-	-	-	-	-	-	-	6
	-	1	1	1	1	2119781-1	DEPRESSOR, SHEAR	5
	-	1	1	1	1	2-238011-1	BLOCK, CRIMPER SPACER	4
	1	1	1	1	1	6-2119784-2	CRIMPER, INSULATION O PREMIUM	3
	-	1	1	1	1	1-455888-9	SPACER, CRIMPER	2
	1	1	1	1	1	1-856313-7	CRIMPER, WIRE	1
	-77	-27	-25	-22	-21	PART NO	DESCRIPTION	ITEM NO

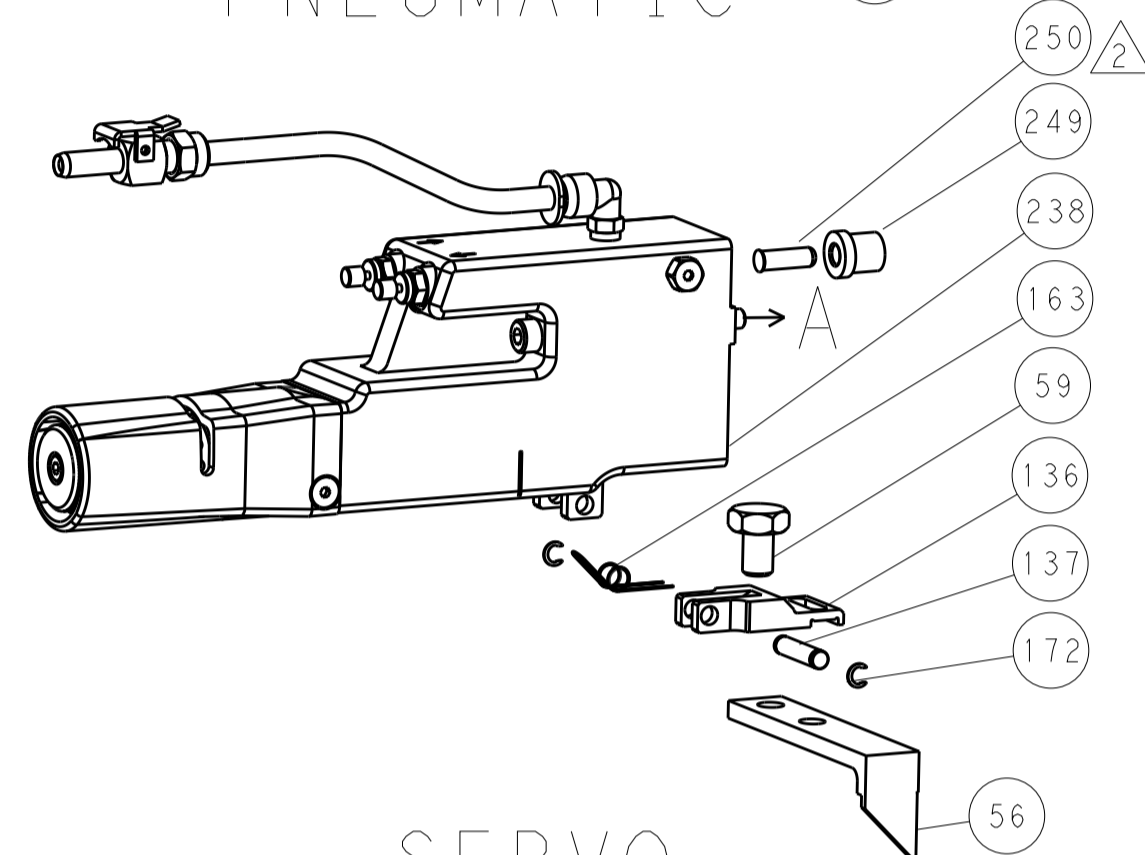
DIMENSIONS:		TOLERANCES UNLESS OTHERWISE SPECIFIED:		OWN	CHK	DATE	NAME	
mm	0 PLC	±		T. YIN	G. BAILEY	25 JUL 2012	Ocean Side Feed Applicator	
	1 PLC	±					Customer Accessible Production Drawing	
	2 PLC	±					SCALE 1:2 SHEET 3 OF 4 REV D	
	3 PLC	±						
	4 PLC	±						
	ANGLES	±						
MATERIAL	FINISH			WEIGHT	A1 00779 ©=2151730		RESTRICTED TO	

LOC	DIST	REV	DATE	BY	APPV
A	66				

# FEED TYPE MECHANICAL



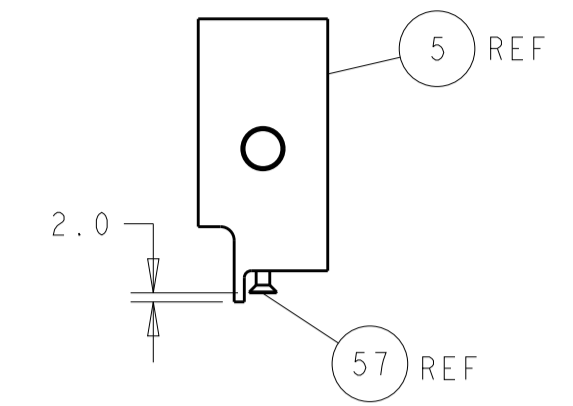
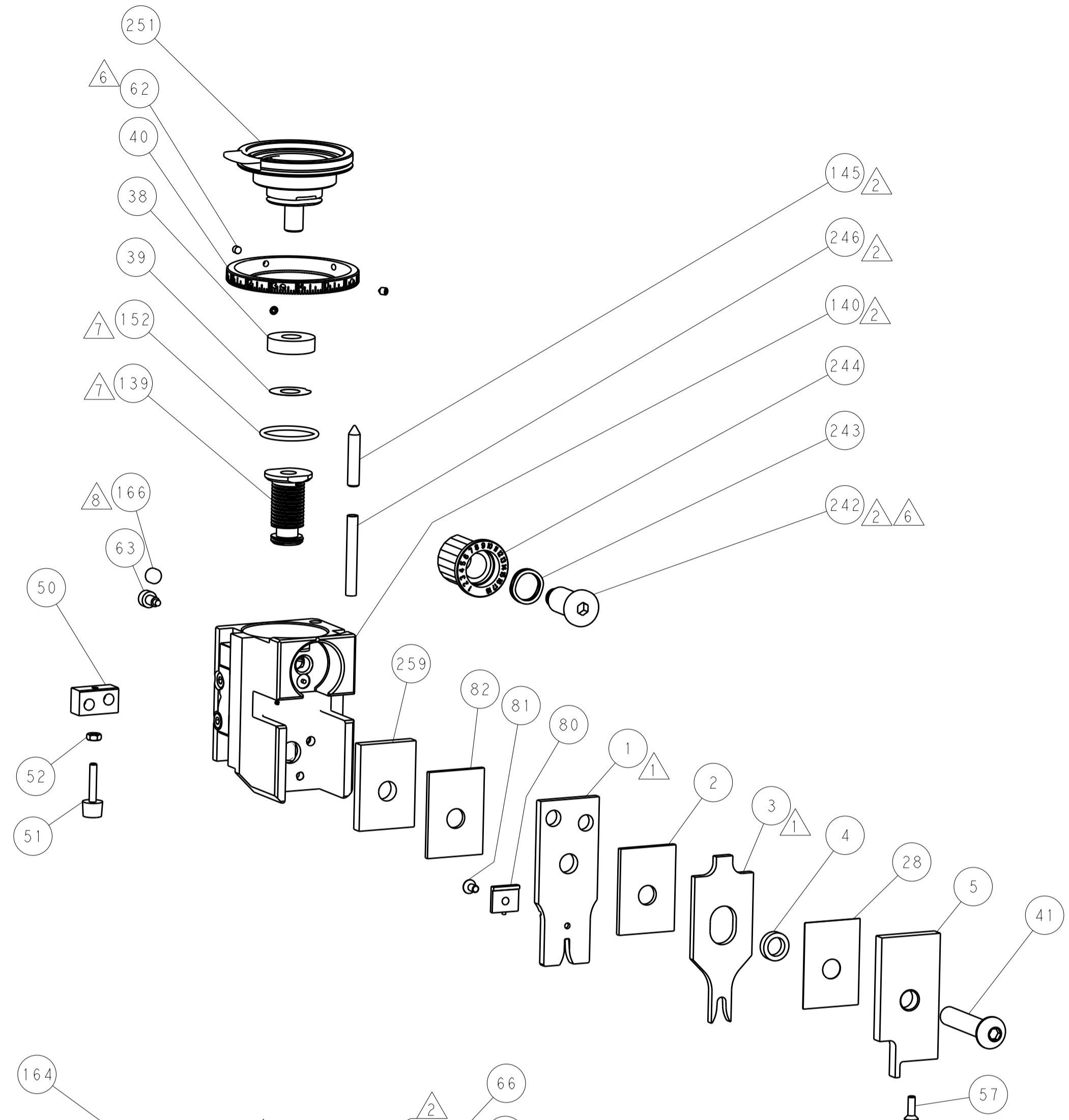
# PNEUMATIC



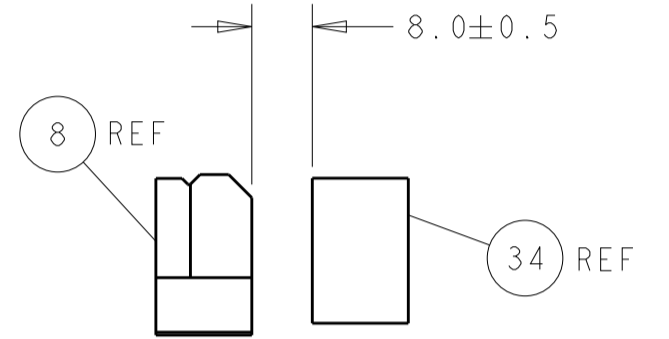
# SERVO LATCH PLATE



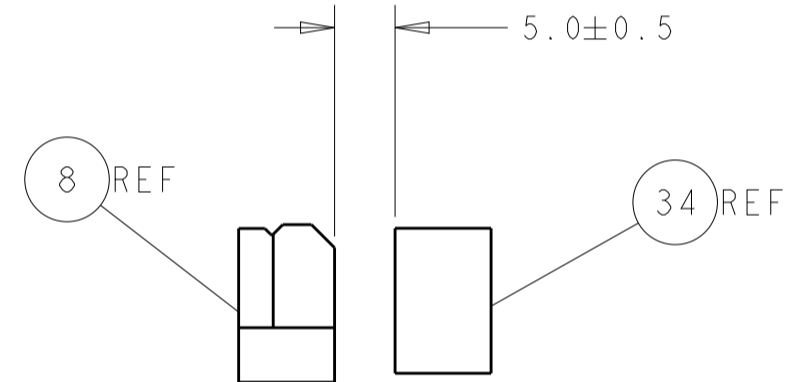
# CAM POSITIONS



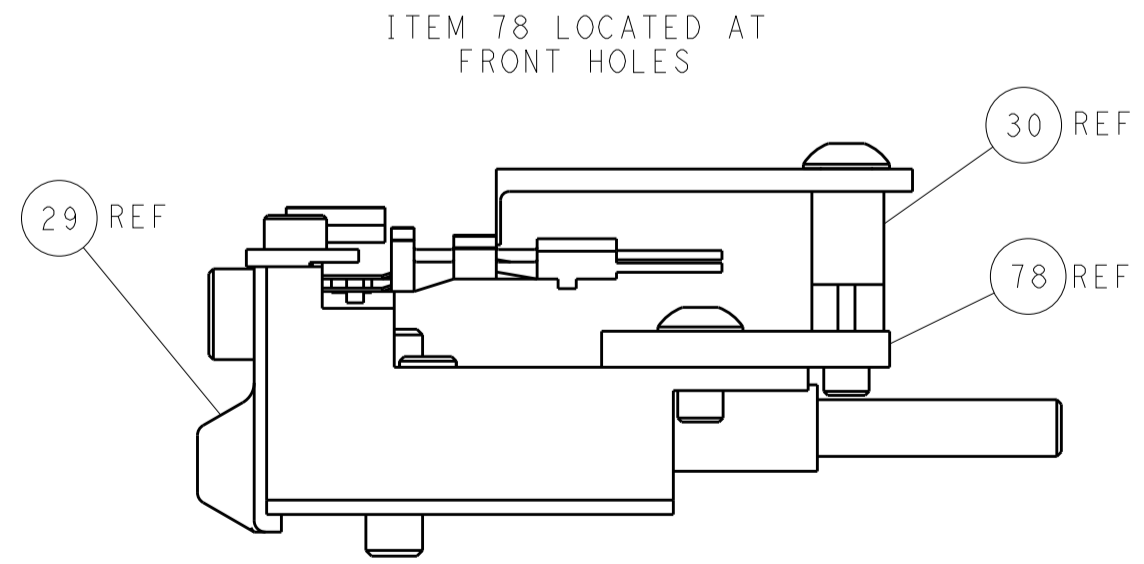
SHEAR DEPRESSOR DETAIL



TERMINAL SUPPORT LOCATION FOR BLADE TERMINAL P/N 1326031-8



TERMINAL SUPPORT LOCATION FOR RECEPTACLE TERMINAL P/N 1326032-9



ITEM 78 LOCATED AT FRONT HOLES

FEED TRACK POSITION GUIDE BY WIRE BARREL

**PACIFIC VERSION**  
 Shown on sheets 3 of 4 & 4 of 4  
 (Atlantic version shown on sheets 1 of 4 & 2 of 4)

DIMENSIONS:		TOLERANCES UNLESS OTHERWISE SPECIFIED:		DWG: Y. YIN 25JUL2012		TE Connectivity	
mm	0 PLC	±		CHK: G. BAILEY 25JUL2012	NAME	Harrisburg, PA 17105-3608	
	1 PLC	±		APPV: S. XI 25JUL2012	PRODUCT SPEC	Ocean Side Feed	
	2 PLC	±			APPLICATION SPEC	Applicator	
	3 PLC	±			SIZE	CAGE CODE	DRAWING NO
	4 PLC	±			WEIGHT	A11 00779	©=2151730
	ANGLES	±			MATERIAL	FINISH	
				Customer Accessible Production Drawing		SCALE	1:1
				SHEET		4	OF 4
				REV		D	