



Part Number	Package	Application	Last Modified
803-RF935.5M-B	3.0 x 3.0 SMD	Wireless	Mar. 2, 2007

TYPE :
RF SAW Filter for Wireless



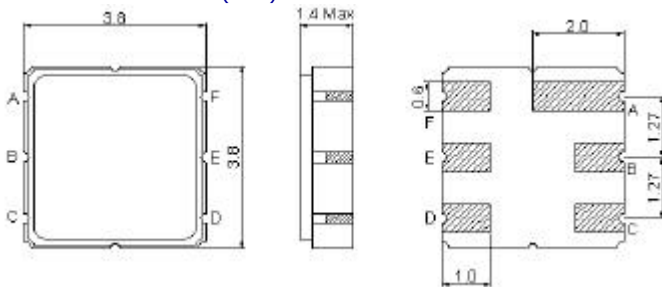
PART NUMBER :
803-RF935.5M-B

OPERATING CONDITIONS / ELECTRICAL CHARACTERISTICS

PARAMETERS	Condition	Minimum	Typical	Maximum	Units
Center Frequency (Fo)	-	-	935.5	-	MHz
Maximum Insertion Loss	929.0~ 942.0 MHz	-	2.5	3.0	dB
Stop Band Attenuation:	D.C.~ 875.0 MHz	50	60	-	dB
	875.0~ 895.0 MHz	48	55	-	
	978.0~ 1005.0MHz	40	44	-	
	1005.0~ 1500.0 MHz	50	57	-	
Source Impedance (single ended)*	-	-	50	-	ohm
Load Impedance (single ended)*	-	-	50	-	ohm
VSWR	929.0~ 942.0 MHz	-	1.45	2.0	-
Amplitude Ripple	929.0~ 942.0 MHz	-	0.3	0.8	dBp-p
Maximum Input Power	-	-	-	15	dBm
Maximum DC Voltage	-	-	-	5	V
Operating Temperature	-	-30	-	+65	°C

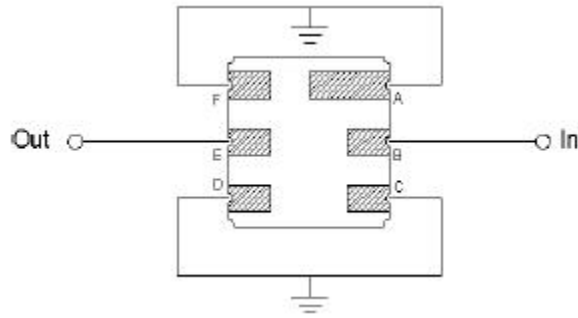
* No Matching Network

PACKAGE OUTLINE (mm)



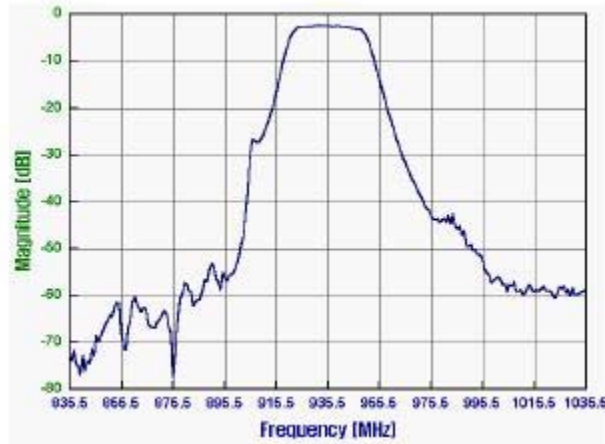
PIN LAYOUT	
A	Ground
B	In
C	Ground
D	Ground
E	Out
F	Ground

TEST FIXTURE



Source/ Load Impedance = 50 ohms

FREQUENCY RESPONSE



Oscilent Corporation - CALL **949.252.0522**
 18195 East McDermott Street, Building D, Irvine, CA 92614, USA
 Fax: 949.252.0599, E-Mail: Sales@Oscilent.com

Part No.: 803-RF935.5M-B