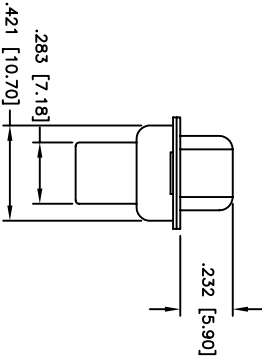
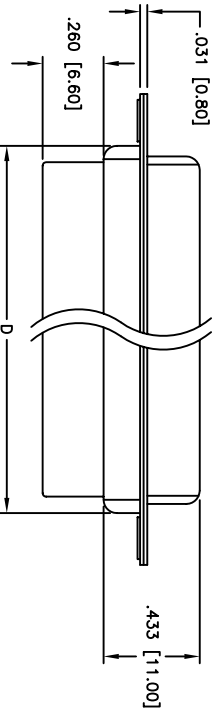
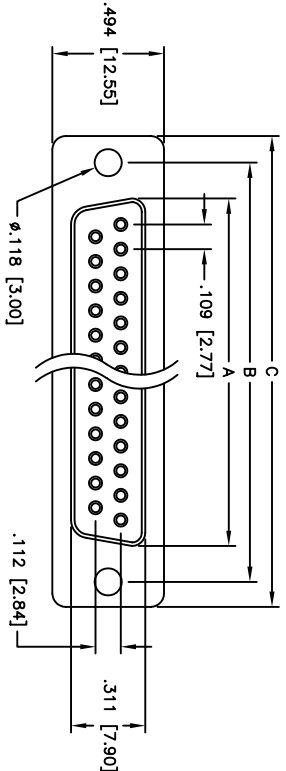


Rev	AWO #	Description	Date	Appr
-		RELEASED	4/29/05	

APPROVED: _____
 DATE: _____ TITLE: _____



Positions	SOCKET		DIMENSIONS			
	A	B	C	D		
9	.643 [16.33]	.984 [24.99]	1.213 [30.81]	.756 [19.20]		
15	.971 [24.66]	1.312 [33.32]	1.541 [39.14]	1.091 [27.70]		
25	1.511 [38.36]	1.852 [47.04]	2.088 [53.04]	1.618 [41.10]		
37	2.159 [54.84]	2.500 [63.50]	2.729 [69.32]	2.256 [57.30]		
50	2.064 [52.43]	2.406 [61.11]	2.637 [67.00]	2.169 [55.10]		

Unit: Inch / mm

SPECIFICATIONS:

Material: Insulator: PBT, glass reinforced, rated UL 94V-0
 Insulator color: Black
 Contacts: Phosphor Bronze
 Shell: Steel, Tin plated

Plating: Gold flash over Nickel underplate overall

Electrical: Operating voltage: 250 VAC max
 Current rating: 5 Amps max
 Contact resistance: 20 mohms max
 Insulation resistance: 5,000 Mohms min
 Dielectric withstanding voltage: 1,000 VAC for 1 minute
 Temperature Rating: Operating temperature: -65°C to +125°C
 Environmental: Lead free, RoHS compliant



ADAM TECH

909 Rahway Avenue, Union, NJ 07083
 Phone: 908-687-5000 Fax: 908-687-5710

TITLE: D-SUB SOCKET, CRIMP AND POKE
 .118 [3.00] MOUNTING HOLES

UNLESS OTHERWISE SPECIFIED ALL DIMENSIONS ARE INCHES [MM]		TOLERANCES: EXCEPT AS NOTED	
INCHES		HOLDS	
.X	± .10	ØX	± .10
.XX	± .020	ØXXX	± .015
.XXX	± .015	ØXXXX	± .010
APPROVALS	DATE	SIZE	PART NO.
DRAWN	SS	4/29/05	DXXX-SR
CHECKED			
APPROVED		REF: X	SCALE: NTS
			SHEET 1 OF 1