

PLEASE CHECK WWW.MOLEX.COM FOR LATEST PART INFORMATION

Part Number: [0002081201](#)
Status: **Active**
Overview: [disk drive power connector](#)
Description: Disk Drive Power Connection System, Female Crimp Terminal, Reel, Phosphor Bronze, AWG 14-20

Documents:

[Drawing \(PDF\)](#) [RoHS Certificate of Compliance \(PDF\)](#)
[Product Specification PS-8981-4M*/4P* \(PDF\)](#)

General

Product Family	Crimp Terminals
Series	8980
Crimp Quality Equipment	Yes
Overview	disk drive power connector
Product Name	Disk Drive Power

Physical

Durability (mating cycles max)	50
Gender	Female
Material - Metal	Phosphor Bronze
Material - Plating Mating	Tin
Material - Plating Termination	Tin
Packaging Type	Reel
Plating min: Mating (µin)	35
Plating min: Mating (µm)	0.89
Plating min: Termination (µin)	35
Plating min: Termination (µm)	0.89
Termination Interface: Style	Crimp or Compression
Wire Insulation Diameter	2.03-2.74mm (.080-.108")
Wire Size AWG	14, 16, 18, 20
Wire Size mm ²	N/A

Material Info

Old Part Number 8980-3C

Reference - Drawing Numbers

Product Specification [PS-8981-4M*/4P*](#)
 Sales Drawing [SD-8980-3*](#)

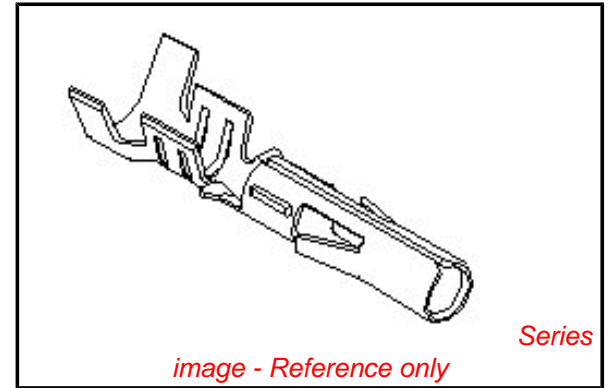


image - Reference only

EU RoHS

ELV and RoHS Compliant
REACH SVHC
Contains SVHC: No
Halogen-Free Status

China RoHS



Halogen-Free

Need more information on product environmental compliance?

Email productcompliance@molex.com
 For a multiple part number RoHS Certificate of Compliance, [click here](#)

Please visit the [Contact Us](#) section for any non-product compliance questions.

Search Parts in this Series

[8980Series](#)

Use With

[8981P](#)

Application Tooling | FAQ

Tooling specifications and manuals are found by selecting the products below. Crimp Height Specifications are then contained in the Application Tooling Specification document.

Global

Description	Product #
Mini-Mac™ Applicator for Disk Drive Power Connector System, Female 14-20 AWG	0638929000
Hand Crimp Tool	0638117000
Extraction Tool	0011030037
Terminator Die	0011402282

Japan

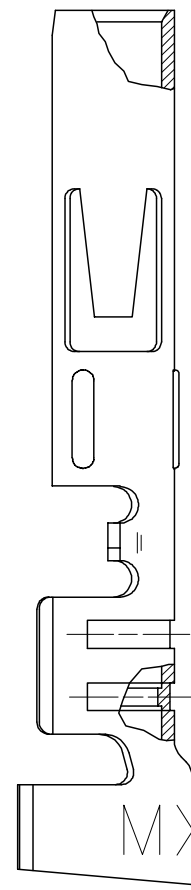
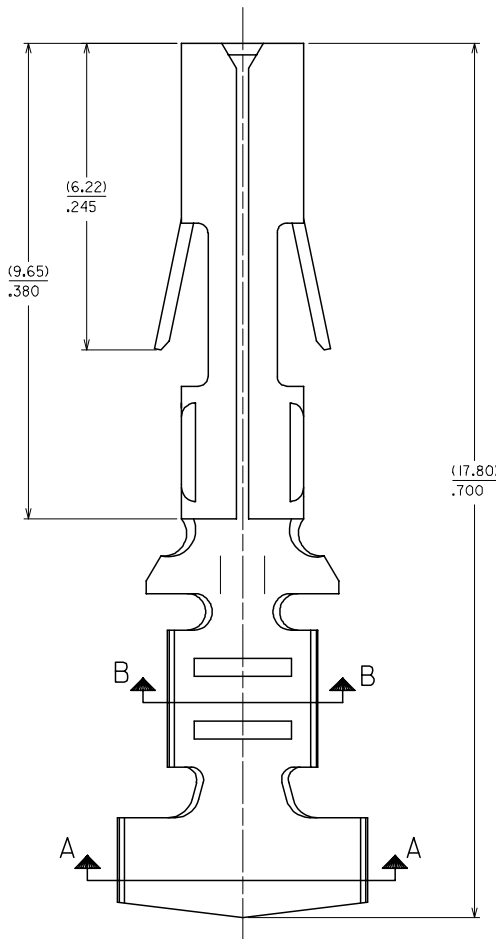
Description	Product #
-------------	-----------

Applicator for M21 1A 0571023000
Bench Press, 14-22
AWG, for 8980-3C
and 8980-3C1 Crimp
Terminal

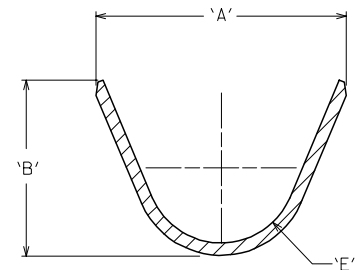
This document was generated on 05/17/2010

PLEASE CHECK WWW.MOLEX.COM FOR LATEST PART INFORMATION

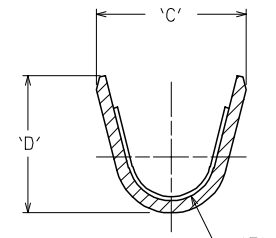
EDP NO.	ENG NO.	FORM	'A'	'B'	'C'	'D'	'E'	'F'
02-08-1201	8980-3C	CHAIN,14-20 AWG WIRE	(4.44)	(3.39)	(3.02)	(3.61)	(1.23)	(0.61)
02-08-1202	8980-3L	LOOSE,14-20 AWG WIRE	.175	.133	.119	.142	.048	.024



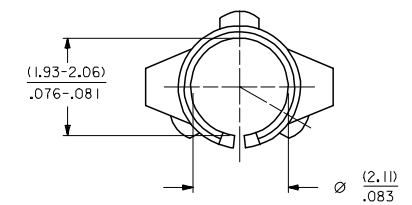
NOTES:
 1. FINISH: (.00089)/.000035 MN. TIN OVER
 (.00051)/.000020 MIN COPPER (COPPER PLATE REFLOWED)
 2. MATERIAL: (.025)/.010 THK PHOS
 BRONZE, ALLOY CA 51000.



SECTION A-A



SECTION B-B



OBS060702	EC NO: S2007-0797	2007/03/30
	DRWN:GEMARLY	2007/04/03
	CHKD:SKANG	2007/04/03
	APPR:MLONG	2007/04/03
REV	DESCRIPTION	

QUALITY SYMBOLS = 0 = 0	GENERAL TOLERANCES (UNLESS SPECIFIED)	DIMENSION STYLE MM/IN	SCALE NTS	DESIGN UNITS METRIC	THIRD ANGLE PROJECTION																										
	<table border="1"> <thead> <tr> <th></th> <th>mm</th> <th>INCH</th> </tr> </thead> <tbody> <tr> <td>4 PLACES</td> <td>± ---</td> <td>± ---</td> </tr> <tr> <td>3 PLACES</td> <td>± ---</td> <td>± .010</td> </tr> <tr> <td>2 PLACES</td> <td>± 0.25</td> <td>± ---</td> </tr> <tr> <td>1 PLACE</td> <td>± ---</td> <td>± ---</td> </tr> </tbody> </table>		mm	INCH	4 PLACES	± ---	± ---	3 PLACES	± ---	± .010	2 PLACES	± 0.25	± ---	1 PLACE	± ---	± ---	<table border="1"> <thead> <tr> <th>DRAWN BY</th> <th>DATE</th> </tr> </thead> <tbody> <tr> <td>TAY</td> <td>1987/12/15</td> </tr> <tr> <th>CHECKED BY</th> <th>DATE</th> </tr> <tr> <td>AT</td> <td>1987/12/15</td> </tr> <tr> <th>APPROVED BY</th> <th>DATE</th> </tr> <tr> <td>AB</td> <td>1987/12/15</td> </tr> </tbody> </table>	DRAWN BY	DATE	TAY	1987/12/15	CHECKED BY	DATE	AT	1987/12/15	APPROVED BY	DATE	AB	1987/12/15	TITLE TERMINAL SOCKET DIA. (2.096)/.0825	MOLEX INCORPORATED
	mm	INCH																													
4 PLACES	± ---	± ---																													
3 PLACES	± ---	± .010																													
2 PLACES	± 0.25	± ---																													
1 PLACE	± ---	± ---																													
DRAWN BY	DATE																														
TAY	1987/12/15																														
CHECKED BY	DATE																														
AT	1987/12/15																														
APPROVED BY	DATE																														
AB	1987/12/15																														
DRAFT WHERE APPLICABLE MUST REMAIN WITHIN DIMENSIONS	SEE TABLE	MATERIAL NO.	DOCUMENT NO. SD-8980-3*																												
THIS DRAWING CONTAINS INFORMATION THAT IS PROPRIETARY TO MOLEX INCORPORATED AND SHOULD NOT BE USED WITHOUT WRITTEN PERMISSION																															