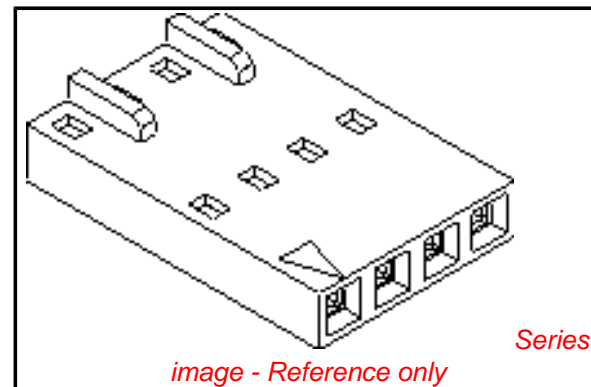


**PLEASE CHECK WWW.MOLEX.COM FOR LATEST PART INFORMATION**

**Part Number:** [0050579316](#)  
**Status:** **Active**  
**Overview:** [cgrid\\_sl\\_products](#)  
**Description:** 2.54mm (.100") Pitch SL™ Crimp Housing, Single Row, Version D, Back Ribs, 16 Circuits

**Documents:**

<a href="#">3D Model</a>	<a href="#">Product Specification PS-70058 (PDF)</a>
<a href="#">Drawing (PDF)</a>	<a href="#">Product Specification PS-70400 (PDF)</a>
<a href="#">Packaging Specification (PDF)</a>	<a href="#">RoHS Certificate of Compliance (PDF)</a>



**Agency Certification**

CSA	LR19980
TUV	R72081037
UL	E29179

**General**

Product Family	Crimp Housings
Series	<a href="#">70066</a>
Comments	Version D
Overview	<a href="#">cgrid_sl_products</a>
Product Name	SL™

**Physical**

Circuits (maximum)	16
Color - Resin	Black
Flammability	94V-0
Gender	Female
Glow-Wire Compliant	No
Material - Resin	Polyester Alloy
Number of Rows	1
Packaging Type	Bag
Panel Mount	No
Pitch - Mating Interface (in)	0.100 In
Pitch - Mating Interface (mm)	2.54 mm
Stackable	Yes
Temperature Range - Operating	-40°C to +105°C

**Material Info**

Old Part Number	70066-0120
-----------------	------------

**Reference - Drawing Numbers**

Packaging Specification	PK-70066-100
Product Specification	PS-70058, PS-70400
Sales Drawing	SD-70066-0106-0129
Test Summary	TS-70058-001

<b>EU RoHS</b> <b>ELV and RoHS</b> <b>Compliant</b> <b>REACH SVHC</b> <b>Contains SVHC: No</b> <b>Halogen-Free</b> <b>Status</b> <b>Not Reviewed</b>	<b>China RoHS</b> 
---	--

**Need more information on product environmental compliance?**

Email [productcompliance@molex.com](mailto:productcompliance@molex.com)  
 For a multiple part number RoHS Certificate of Compliance, [click here](#)

Please visit the [Contact Us](#) section for any non-product compliance questions.

**Search Parts in this Series**

[70066Series](#)

**Mates With**

[70004](#) Interim Clip, [70013](#) , [70022](#) , [70104](#)

**Use With**

[70021](#) , [70058](#) , [71851](#)

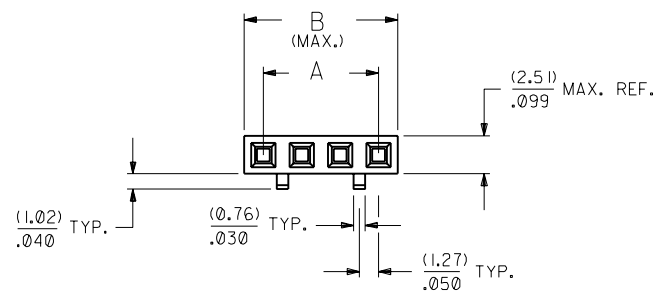
**PLEASE CHECK WWW.MOLEX.COM FOR LATEST PART INFORMATION**

70066

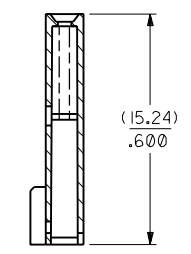
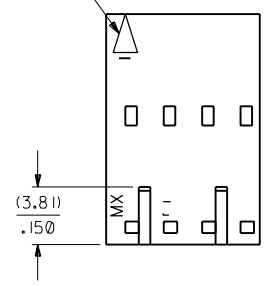
**NOTES:**

- 1) MATERIAL: G.F. POLYESTER
- 2) HOUSING TO BE USE WITH TERMINAL PT. NO. 70058-\*\*\*\*
- 3) SEE CHART FOR CIRCUIT SIZES.
- 4) TO BE USED WITH (0.64)/.025 SQ. OR RD. PINS.
- 5) PARTS STACKABLE END TO END ON (2.54)/.100 CENTERS.
- 6) REFER TO PRODUCT SPECIFICATION NO. : P.S.-70058
- 7) PARTS MAY OR MAY NOT BE SUPPLIED WITH EXTERIOR CORE-OUT CONFIGURATION. SEE DWG. SD-70066-\*\*\*\* FOR OPTIONAL HOUSING DETAILS.
- 8) PACKAGE PER PK-70066-100.

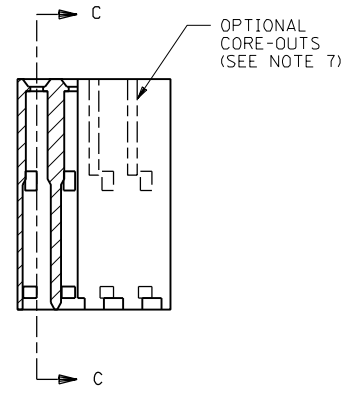
**OPTION "D"**



CIRCUIT NO. 1 IDENTIFICATION



SECTION C-C



CKT. SIZE	EDP. NO.	ENG. NO.	A	B
2	50-57-9302	70066-0106	(2.54)/.100	(5.05)/.199
3	50-57-9303	70066-0107	(5.08)/.200	(7.59)/.299
4	50-57-9304	70066-0108	(7.62)/.300	(10.13)/.399
5	50-57-9305	70066-0109	(10.16)/.400	(12.67)/.499
6	50-57-9306	70066-0110	(12.70)/.500	(15.21)/.599
7	50-57-9307	70066-0111	(15.24)/.600	(17.75)/.699
8	50-57-9308	70066-0112	(17.78)/.700	(20.29)/.799
9	50-57-9309	70066-0113	(20.32)/.800	(22.83)/.899
10	50-57-9310	70066-0114	(22.86)/.900	(25.37)/.999
11	50-57-9311	70066-0115	(25.40)/1.000	(27.91)/1.099
12	50-57-9312	70066-0116	(27.94)/1.100	(30.45)/1.199
13	50-57-9313	70066-0117	(30.48)/1.200	(32.99)/1.299
14	50-57-9314	70066-0118	(33.02)/1.300	(35.53)/1.399
15	50-57-9315	70066-0119	(35.56)/1.400	(38.07)/1.499
16	50-57-9316	70066-0120	(38.10)/1.500	(40.61)/1.599
17	50-57-9317	70066-0121	(40.64)/1.600	(43.15)/1.699
18	50-57-9318	70066-0122	(43.18)/1.700	(45.69)/1.799
19	50-57-9319	70066-0123	(45.72)/1.800	(48.23)/1.899
20	50-57-9320	70066-0124	(48.26)/1.900	(50.77)/1.999
21	50-57-9321	70066-0125	(50.80)/2.000	(53.31)/2.099
22	50-57-9322	70066-0126	(53.34)/2.100	(55.85)/2.199
23	50-57-9323	70066-0127	(55.88)/2.200	(58.39)/2.299
24	50-57-9324	70066-0128	(58.42)/2.300	(60.93)/2.399
25	50-57-9325	70066-0129	(60.96)/2.400	(63.47)/2.499

70066

MFG. SH. REV.

E	REVISED PER ECR# U10967 8-8-91 MJM/MGB	DIMENSIONS SHOWN (METRIC) INCH UNLESS OTHERWISE SPECIFIED TOLERANCES: ANGULAR ± 1/2°	<table border="1"> <tr> <th></th> <th>INCH</th> <th>METRIC</th> </tr> <tr> <td>3 PLACE</td> <td>± .010</td> <td>---</td> </tr> <tr> <td>2 PLACE</td> <td>± .014</td> <td>± 0.25</td> </tr> <tr> <td>1 PLACE</td> <td>---</td> <td>± 0.35</td> </tr> </table>		INCH	METRIC	3 PLACE	± .010	---	2 PLACE	± .014	± 0.25	1 PLACE	---	± 0.35	<table border="1"> <tr> <td>□ = 0</td> <td>▼ = 0</td> <td>REVISE ONLY ON CAD SYSTEM</td> </tr> <tr> <td colspan="3">TITLE HOUSING CONNECTOR (2.54)/.100 GRID STACKABLE SINGLE ROW</td> </tr> <tr> <td colspan="2">MOLLEX INCORPORATED LISLE, ILL. 60532 U.S.A.</td> <td>SHEET NO. 1 DATE 03/28/86</td> </tr> <tr> <td colspan="2">PART NO. SD-70066-0106-0129</td> <td>DRWG. NO. DA 1 C</td> </tr> <tr> <td colspan="3">FILE NAME: 700660106 THIS DRAWING CONTAINS INFORMATION THAT IS PROPRIETARY TO MOLEX INC. AND SHOULD NOT BE USED WITHOUT WRITTEN PERMISSION.</td> </tr> </table>	□ = 0	▼ = 0	REVISE ONLY ON CAD SYSTEM	TITLE HOUSING CONNECTOR (2.54)/.100 GRID STACKABLE SINGLE ROW			MOLLEX INCORPORATED LISLE, ILL. 60532 U.S.A.		SHEET NO. 1 DATE 03/28/86	PART NO. SD-70066-0106-0129		DRWG. NO. DA 1 C	FILE NAME: 700660106 THIS DRAWING CONTAINS INFORMATION THAT IS PROPRIETARY TO MOLEX INC. AND SHOULD NOT BE USED WITHOUT WRITTEN PERMISSION.		
				INCH	METRIC																										
3 PLACE	± .010	---																													
2 PLACE	± .014	± 0.25																													
1 PLACE	---	± 0.35																													
□ = 0	▼ = 0	REVISE ONLY ON CAD SYSTEM																													
TITLE HOUSING CONNECTOR (2.54)/.100 GRID STACKABLE SINGLE ROW																															
MOLLEX INCORPORATED LISLE, ILL. 60532 U.S.A.		SHEET NO. 1 DATE 03/28/86																													
PART NO. SD-70066-0106-0129		DRWG. NO. DA 1 C																													
FILE NAME: 700660106 THIS DRAWING CONTAINS INFORMATION THAT IS PROPRIETARY TO MOLEX INC. AND SHOULD NOT BE USED WITHOUT WRITTEN PERMISSION.																															
D	REVISED PER ECR# U80051 3-27-89 MCB	<table border="1"> <tr> <td>DRWG. BY</td> <td>RS</td> <td>CHK'D. BY</td> <td>WZ</td> </tr> <tr> <td>APP'D. BY</td> <td>RL</td> <td>SCALE</td> <td>4:1</td> </tr> </table>	DRWG. BY	RS	CHK'D. BY	WZ	APP'D. BY	RL	SCALE	4:1																					
DRWG. BY	RS	CHK'D. BY	WZ																												
APP'D. BY	RL	SCALE	4:1																												
F	ADD PKG NOTE ECN UDT2000-0468 SCHAFER 99/12/1	C	REDRAWN ON CAD ECR # 9120 5/5/86 WZ																												
LTR.	REVISIONS	LTR.	REVISIONS																												