



Data Sheet



Product Category: IF SAW Filter

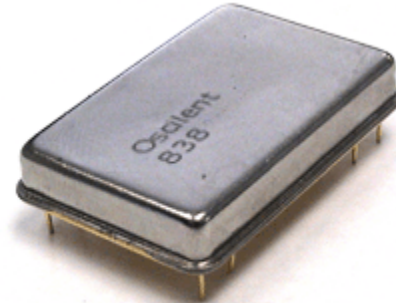
Part Number	Package	Application	Last Modified
838-IF42.512M-B	38.0 x 25.0 Thru Hole	Base Station & Repeater	Jan. 01, 2007

TYPE :

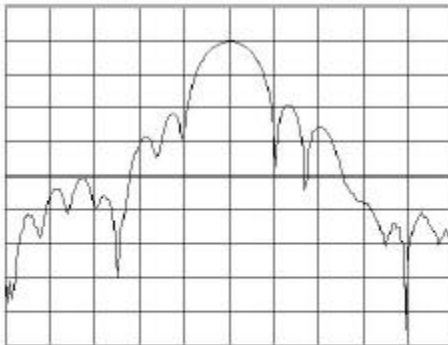
42.512 MHz Bandpass Filter
195 kHz Bandwidth

PART NUMBER :

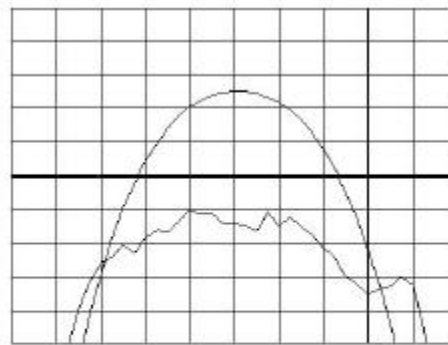
838-IF42.512M-B



FREQUENCY CHARACTERISTICS



Horizontal : 0.2 MHz/Div
Vertical : 10 dB/Div



Horizontal : 0.04 MHz/Div
Vertical : 1 dB/Div
Vertical : 100 ns/Div

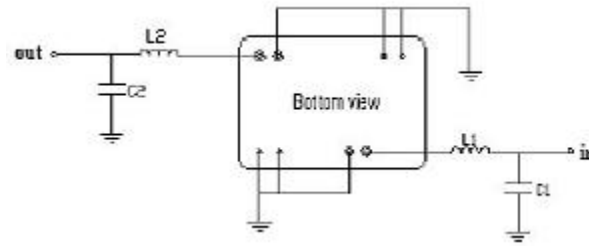
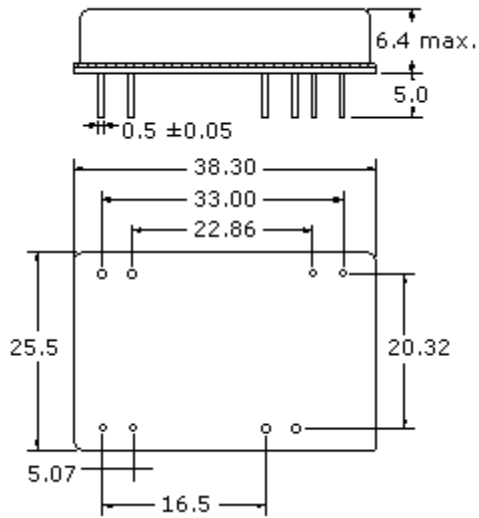
OPERATING CONDITIONS / ELECTRICAL CHARACTERISTICS

PARAMETERS	Minimum	Typical	Maximum	Units
Center Frequency	42.502	42.512	42.522	MHz
Insertion Loss	-	15.0	17.0	dB
1dB Bandwidth	0.115	0.130	-	MHz
3dB Bandwidth	0.195	0.210	-	MHz
24dB Bandwidth	-	0.400	0.410	MHz
Passband Ripple	-	1.0	1.5	dB
Group Delay Variation	-	500	1000	nsec
Absolute Delay	-	5.35	-	µsec
Substrate Material	-	Qz	-	-
Ambient Temperature	-	25	-	°C

* Custom SAW IF Filters available. Contact Oscilent for assistance.

PACKAGE OUTLINE (mm)

TEST FIXTURE



L1 = 390nH
 L2 = 640nH
 C1 = 68pF
 C2 = 47pF
 Source/Load Impedance = 50 ohm

Oscilent Corporation - CALL **949.252.0522**

Part No.: 838-IF42.512M-B

18195 East McDermott Street, Building D, Irvine, CA 92614, USA
 Fax: 949.252.0599, E-Mail: Sales@Oscilent.com