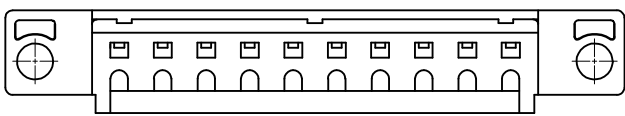
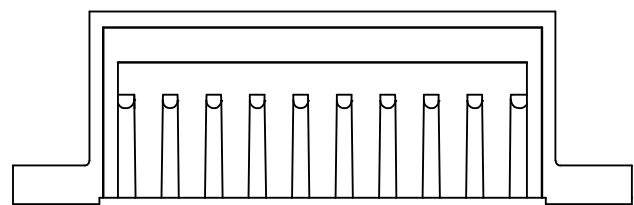
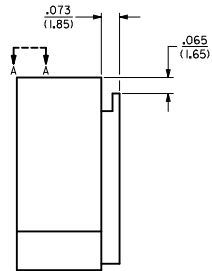
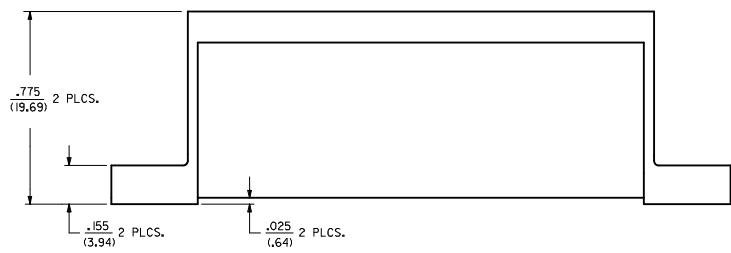
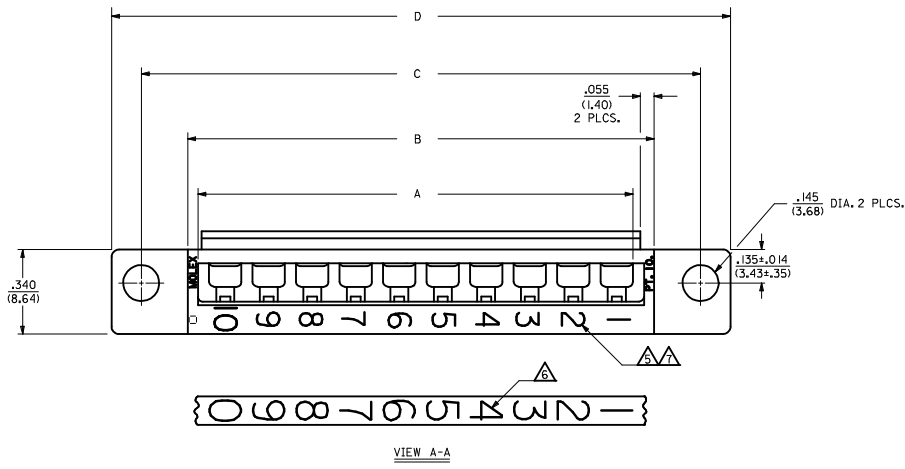


- NOTES:**
- ▲ THESE HOUSINGS ARE FOR USE WITH THE 1457-•• TERMINALS AND MAY BE SUBDIVIDED BY USING THE 1461-K KEY.
 - ▲ THE HOUSINGS ARE ONLY AVAILABLE IN 5, 10, 15, AND 20 CIRCUIT SIZES.
 - ▲ PRODUCT SPECIFICATION PS 50-36 APPLIES.
 - ▲ THESE HOUSINGS CONFORM TO U.L. AND C.S.A. REQUIREMENTS.
 - ▲ .060/(1.52) HIGH RAISED NUMERALS.
 - ▲ .125/(3.18) HIGH RECESSED NUMERALS ON A MATTE BACKGROUND.
 - ▲ .09/(2.3) HIGH INK STAMPED NUMERALS.
 - 8. PACKAGE PER PK-1461-100.



4	01
3	0
2	01
1	0
SHT REV	

MODIFY CORE OUTS IEC NO. UCF2005-2756 DRWN:SBARRA 2005/09/29 CHYK:BARBER 2005/10/10 APPR:SMILLER 2005/10/12	QUALITY SYMBOLS ▽=0 ▽=0	GENERAL TOLERANCES (UNLESS SPECIFIED)		DIMENSION STYLE IN/MM		SCALE 4:1	DESIGN UNITS INCH	THIRD ANGLE PROJECTION	
		4 PLACES	± .010	± .010	DATE	TITLE HOUSING, COMMONING [.025/(.64) OFFSET]			
		3 PLACES	± .025	± .014	DATE	MOLEX INCORPORATED			
		2 PLACES	± 0.35	± .014	DATE	MATERIAL NO. SEE TABLE DOCUMENT NO. SD-1461-* SHEET NO. 1 OF 4			
DRAFT WHERE APPLICABLE MUST REMAIN WITHIN DIMENSIONS		ANGULAR ±1/2°		APPROVED BY GWF 91/02/18		THIS DRAWING CONTAINS INFORMATION THAT IS PROPRIETARY TO MOLEX INCORPORATED AND SHOULD NOT BE USED WITHOUT WRITTEN PERMISSION			

